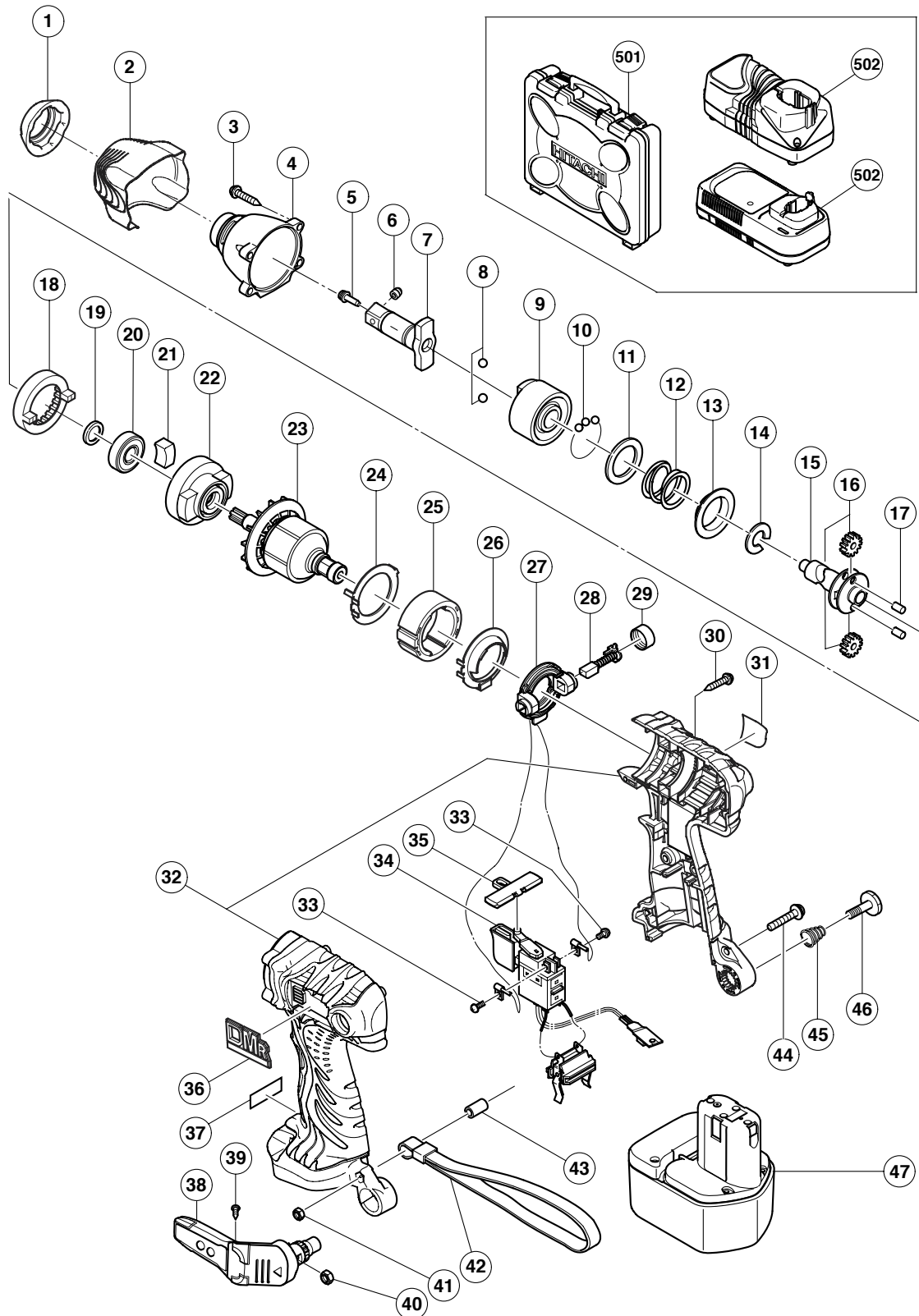


ELECTRIC TOOL PARTS LIST

CORDLESS IMPACT WRENCH Model WR 12DMR

2005 · 4 · 1

(E1)



PARTS

WR 12DMR

| ITEM NO. | CODE NO. | DESCRIPTION | NO. USED | REMARKS |
|----------|----------|--|----------|--|
| 1 | 322-727 | FRONT CAP (B) | 1 | |
| 2 | 322-728 | PROTECTOR (C) | 1 | |
| 3 | 319-917 | TAPPING SCREW (W/SP. WASHER) D4X25 (BLACK) | 4 | |
| 4 | 322-172 | HAMMER CASE | 1 | |
| * 5 | 323-542 | PIN RETAINER (A) | 1 | |
| * 6 | 323-541 | PLUNGER (A) | 1 | |
| * 7 | 322-173 | ANVIL (R) ASS'Y | 1 | INCLUD. 5, 6 TYPE FOR W/PLUNGER (A), PIN RETAINER (A) |
| * 7 | 322-732 | ANVIL (U) | 1 | TYPE FOR W/O PLUNGER (A), PIN RETAINER (A) |
| 8 | 959-154 | STEEL BALL D5.556 (10 PCS.) | 2 | |
| 9 | 321-656 | HAMMER (D) | 1 | |
| 10 | 959-148 | STEEL BALL D3.175 (10 PCS.) | 28 | |
| 11 | 315-978 | WASHER (J) | 1 | |
| 12 | 321-660 | HAMMER SPRING (D) | 1 | |
| 13 | 316-172 | WASHER (S) | 1 | |
| 14 | 316-171 | STOPPER | 1 | |
| 15 | 321-666 | SPINDLE (D) | 1 | |
| 16 | 321-667 | IDLE GEAR SET (2 PCS.) | 2 | |
| 17 | 319-914 | NEEDLE ROLLER | 2 | |
| 18 | 320-877 | RING GEAR (C) | 1 | |
| 19 | 319-911 | WASHER (E) | 1 | |
| 20 | 690-1VV | BALL BEARING 6901VVCMP2L | 1 | |
| 21 | 319-909 | DAMPER | 2 | |
| 22 | 321-664 | INNER COVER (A) | 1 | |
| 23 | 360-641 | ARMATURE ASS'Y DC 12V | 1 | |
| 24 | 322-719 | SIDE YOKE | 1 | |
| 25 | 322-723 | MAGNET (E) | 1 | |
| 26 | 322-720 | DUST GUARD FIN (B) | 1 | |
| 27 | 321-662 | BRUSH BLOCK | 1 | |
| 28 | 999-054 | CARBON BRUSH 5X6X11.5 (1 PAIR) | 2 | |
| 29 | 319-918 | BRUSH CAP | 2 | |
| 30 | 302-086 | TAPPING SCREW (W/FLANGE) D4X20 (BLACK) | 7 | |
| 31 | | NAME PLATE | 1 | |
| 32 | 324-282 | HOUSING (A). (B) SET | 1 | |
| 33 | 994-532 | MACHINE SCREW (W/SP. WASHER) M3X5 | 2 | |
| 34 | 319-906 | DC-SPEED CONTROL SWITCH | 1 | |
| 35 | 321-661 | PUSHING BUTTON (A) | 1 | |
| 36 | 324-280 | HITACHI PLATE | 1 | |
| * 37 | | CAUTION PLATE (A) | 1 | FOR USA, CAN |
| 38 | 321-918 | HOOK ASS'Y (W/LIGHT) | 1 | INCLUD. 39, 40 |
| 39 | 321-672 | TAPPING SCREW D2X6 | 2 | |
| 40 | 320-288 | V-LOCK NUT M5 | 1 | |
| 41 | 949-565 | LOCK NUT M4 (10 PCS.) | 1 | |
| 42 | 306-952 | STRAP (BLACK) | 1 | |
| 43 | 322-718 | SLEEVE (A) | 1 | |
| 44 | 324-278 | MACHINE SCREW (W/WASHERS) M4X25 (BLACK) | 1 | |
| 45 | 319-926 | HOOK SPRING | 1 | |
| 46 | 319-927 | SPECIAL SCREW M5 | 1 | |
| * 47 | 320-388 | BATTERY EB 1230HL (W/ENGLISH N.P.) | 2 | |
| * 47 | 323-226 | BATTERY EB 1226HL (W/ENGLISH N.P.) | 2 | |
| * 47 | 320-387 | BATTERY EB 1220BL (W/ENGLISH N.P.) | 2 | |

PARTS

| ITEM NO. | CODE NO. | DESCRIPTION | NO. USED | REMARKS |
|----------|----------|------------------------------------|----------|--------------|
| * 47 | 320-386 | BATTERY EB 1220BL (W/ENGLISH N.P.) | 2 | FOR USA, CAN |
| * 47 | 324-279 | BATTERY EB 1220BL (W/ENGLISH N.P.) | 2 | FOR TPE |
| | | | | |
| | | | | |
| | | | | |

STANDARD ACCESSORIES

| ITEM NO. | CODE NO. | DESCRIPTION | NO. USED | REMARKS |
|----------|----------|--------------------------|----------|---------|
| 501 | 322-070 | CASE | 1 | |
| * 502 | | CHARGER (MODEL UC 14YFA) | 1 | |
| * 502 | | CHARGER (MODEL UC 18YG) | 1 | |
| | | | | |
| | | | | |

OPTIONAL ACCESSORIES

| ITEM NO. | CODE NO. | DESCRIPTION | NO. USED | REMARKS |
|----------|----------|--------------------------------------|----------|------------------|
| * 601 | 310-378 | BATTERY EB 12B (W/ENGLISH N.P.) | 1 | |
| * 601 | 310-452 | BATTERY EB 12B (W/ENGLISH N.P.) | 1 | FOR NZL, AUS |
| * 601 | 310-453 | BATTERY EB 12B (W/ENGLISH N.P.) | 1 | FOR USA, CAN |
| 602 | | CORNER ATTACHMENT ASS'Y | 1 | INCLUD. 603-619 |
| 603 | 955-300 | HOUSING | 1 | |
| 604 | 955-301 | METAL | 3 | |
| 605 | 955-302 | SPINDLE | 1 | |
| 606 | | HITACHI LABEL | 1 | |
| 607 | 955-303 | BEARING RACE | 2 | |
| 608 | 955-304 | NEEDLE THRUST BEARING (NTA-1413) | 2 | |
| 609 | 955-305 | COVER | 1 | |
| 610 | 955-306 | NEEDLE BEARING (NTN BK1012) | 1 | |
| 611 | 948-227 | RETAINING RING FOR D47 HOLE | 1 | |
| 612 | 955-307 | PINION | 1 | |
| 613 | 955-308 | SLEEVE | 1 | |
| 614 | 955-309 | WASHER | 1 | |
| 615 | 955-310 | SOCKET COVER | 1 | |
| 616 | 955-311 | SOCKET | 1 | |
| 617 | 303-247 | SEAL LOCK HEX. SOCKET HD. BOLT M5X25 | 6 | |
| 618 | 873-537 | SOCKET PIN | 1 | |
| 619 | 873-187 | O-RING (J1SW1516) | 1 | |
| 620 | 991-481 | FORM TIE SOCKET ASS'Y 11.3MMX95L | 1 | INCLUD. 618, 619 |
| 621 | 992-610 | UNIVERSAL JOINT ASS'Y | 1 | INCLUD. 618, 619 |
| 622 | 955-153 | UNIVERSAL JOINT PIN | 1 | |
| 623 | 991-476 | BIT ADAPTER ASS'Y | 1 | INCLUD. 618, 619 |
| 624 | 944-291 | HEX. SOCKET ASS'Y 10MMX40L | 1 | INCLUD. 618, 619 |
| 625 | 873-632 | HEX. SOCKET ASS'Y 12MMX40L | 1 | INCLUD. 618, 619 |
| 626 | 873-539 | HEX. SOCKET ASS'Y 13MMX40L | 1 | INCLUD. 618, 619 |
| 627 | 873-540 | HEX. SOCKET ASS'Y 14MMX40L | 1 | INCLUD. 618, 619 |
| 628 | 873-536 | HEX. SOCKET ASS'Y 17MMX32L | 1 | INCLUD. 618, 619 |
| 629 | 873-624 | HEX. SOCKET ASS'Y 19MMX34L | 1 | INCLUD. 618, 619 |

