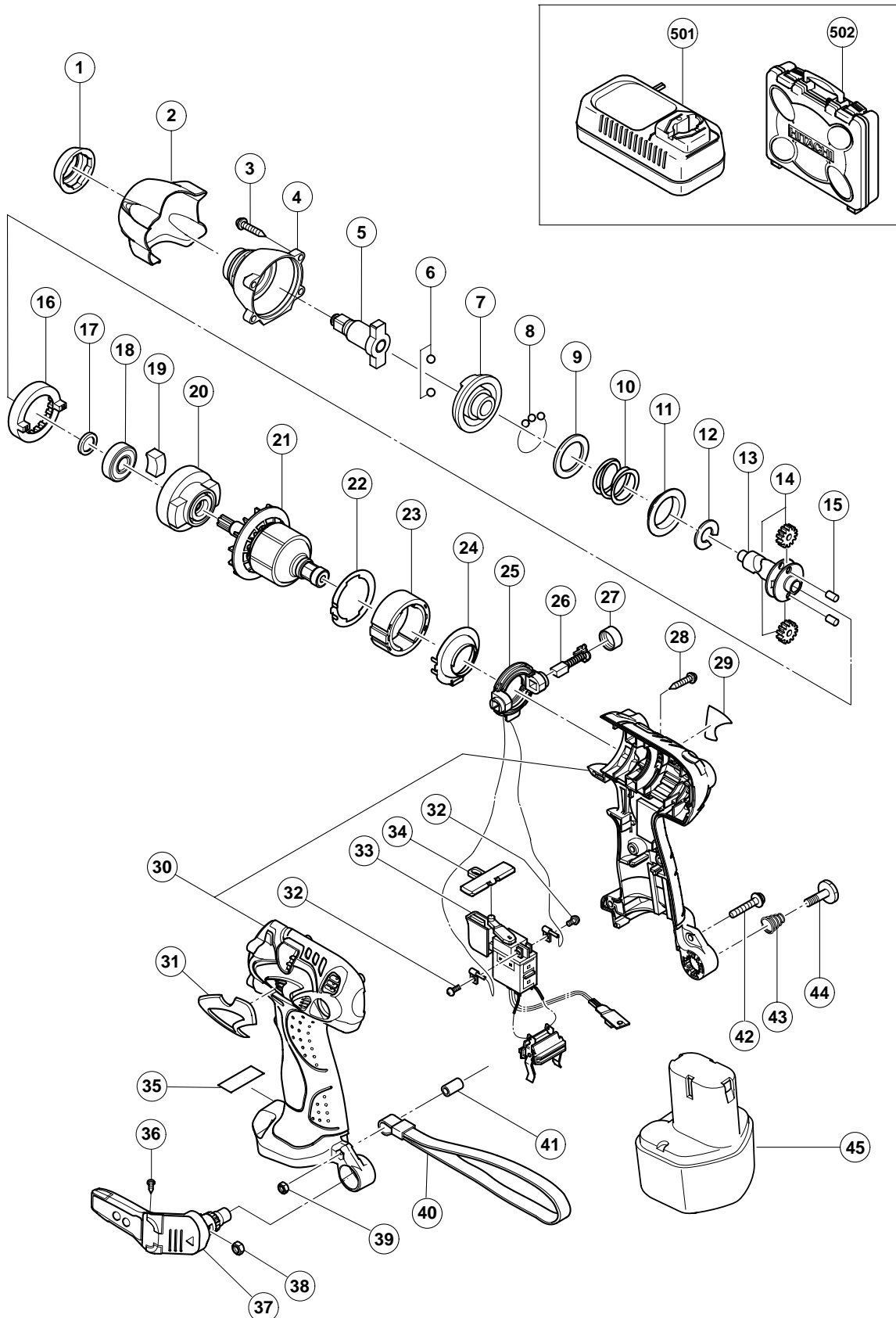


ELECTRIC TOOL PARTS LIST

■ CORDLESS IMPACT WRENCH
Model WR 9DM2

2004 • 3 • 25

(E1)



PARTS

WR 9DM2

ITEM NO.	CODE NO.	DESCRIPTION	NO. USED	REMARKS	
1	322-243	FRONT CAP (A) (BLACK)	1		
2	322-731	PROTECTOR (A)	1		
3	319-917	TAPPING SCREW (W/SP. WASHER) D4X25 (BLACK)	4		
4	322-172	HAMMER CASE	1		
5	322-732	ANVIL (U)	1		
6	959-154	STEEL BALL D5.556 (10 PCS.)	2		
7	322-730	HAMMER (F)	1		
8	959-148	STEEL BALL D3.175 (10 PCS.)	28		
9	315-978	WASHER (J)	1		
10	320-407	HAMMER SPRING (A)	1		
11	316-172	WASHER (S)	1		
12	316-171	STOPPER	1		
13	321-666	SPINDLE (D)	1		
14	321-667	IDLE GEAR SET (2 PCS.)	2		
15	319-914	NEEDLE ROLLER	2		
16	320-877	RING GEAR (C)	1		
17	319-911	WASHER (E)	1		
18	690-1VV	BALL BEARING 6901VVCMP2L	1		
19	319-909	DAMPER	2		
20	321-664	INNER COVER (A)	1		
21	360-642	ARMATURE ASS'Y DC 9.6V	1		
22	321-659	SIDE YOKE	1		
23	321-668	MAGNET (D)	1		
24	321-663	DUST GUARD FIN (A)	1		
25	321-662	BRUSH BLOCK	1		
26	999-054	CARBON BRUSH 5X6X11.5 (1 PAIR)	2		
27	319-918	BRUSH CAP	2		
28	302-086	TAPPING SCREW (W/FLANGE) D4X20 (BLACK)	7		
29		NAME PLATE	1		
30	322-751	HOUSING (A).(B) SET	1		
31	322-753	HITACHI LABEL	1		
32	994-532	MACHINE SCREW (W/SP. WASHER) M3X5	2		
33	319-906	DC-SPEED CONTROL SWITCH	1		
34	321-661	PUSHING BUTTON (A)	1		
35		CAUTION PLATE (A)	1		
36	321-672	TAPPING SCREW D2X6	2		
37	321-918	HOOK ASS'Y (W/LIGHT)	1	INCLUD. 36, 38	
38	320-288	V-LOCK NUT M5	1		
39	949-565	LOCK NUT M4 (10 PCS.)	1		
40	306-952	STRAP (BLACK)	1		
41	322-718	SLEEVE (A)	1		
42	676-386	MACHINE SCREW (W/WASHERS) M4X25	1		
43	319-926	HOOK SPRING	1		
44	319-927	SPECIAL SCREW M5	1		
*	45	310-377	BATTERY EB 9B (W/ENGLISH N.P.)	2	
*	45	310-451	BATTERY EB 9B (W/ENGLISH N.P.)	2	FOR USA, CAN
*	45	318-368	BATTERY EB 930H (W/ENGLISH N.P.)	2	FOR NOR, SWE, DEN

STANDARD ACCESSORIES

WR 9DM2

ITEM NO.	CODE NO.	DESCRIPTION	NO. USED	REMARKS
501		CHARGER (MODEL UC 14YFA)	1	
502	322-886	CASE	1	

OPTIONAL ACCESSORIES

ITEM NO.	CODE NO.	DESCRIPTION	NO. USED	REMARKS
601	996-125	HEX. SOCKET ASS'Y 8MMX33L	1	INCLUD. 602, 603
602	996-124	SOCKET PIN (A)	1	
603	873-095	O-RING (P-16)	1	
604	996-126	HEX. SOCKET ASS'Y 10MMX33L	1	INCLUD. 602, 603
605	996-127	HEX. SOCKET ASS'Y 12MMX33L	1	INCLUD. 602, 603
606	996-128	HEX. SOCKET ASS'Y 13MMX33L	1	INCLUD. 607, 608
607	996-123	SOCKET PIN (B)	1	
608	873-570	O-RING (P-18)	1	
609	996-129	HEX. SOCKET ASS'Y 14MMX33L	1	INCLUD. 607, 608
610	996-130	HEX. SOCKET ASS'Y 16MMX33L	1	INCLUD. 607, 608
611	996-131	HEX. SOCKET ASS'Y 17MMX33L	1	INCLUD. 607, 608
612	996-132	HEX. SOCKET ASS'Y 18MMX33L	1	INCLUD. 607, 608
613	996-133	HEX. SOCKET ASS'Y 19MMX33L	1	INCLUD. 607, 608
614	996-134	HEX. SOCKET ASS'Y (LONG) 8MMX60L	1	INCLUD. 602, 603
615	996-135	HEX. SOCKET ASS'Y (LONG) 10MMX60L	1	INCLUD. 602, 603
616	996-136	HEX. SOCKET ASS'Y (LONG) 12MMX60L	1	INCLUD. 602, 603
617	996-137	HEX. SOCKET ASS'Y (LONG) 13MMX60L	1	INCLUD. 607, 608
618	996-138	HEX. SOCKET ASS'Y (LONG) 14MMX60L	1	INCLUD. 607, 608
619	996-139	HEX. SOCKET ASS'Y (LONG) 16MMX60L	1	INCLUD. 607, 608
620	996-140	HEX. SOCKET ASS'Y (LONG) 17MMX60L	1	INCLUD. 607, 608
621	996-141	HEX. SOCKET ASS'Y (LONG) 18MMX60L	1	INCLUD. 607, 608
622	996-142	HEX. SOCKET ASS'Y (LONG) 19MMX60L	1	INCLUD. 607, 608
623	996-143	EXTENSION BAR ASS'Y	1	INCLUD. 602, 603
624	996-144	BIT ADAPTER ASS'Y	1	INCLUD. 602, 603
625	996-145	ADAPTER ASS'Y 12.7MM	1	INCLUD. 607, 608
626	996-147	UNIVERSAL JOINT ASS'Y	1	INCLUD. 607, 608, 627
627	996-163	UNIVERSAL JOINT PIN	1	
628	309-922	GREASE FOR IMPACT DRIVER (500G)	1	

