

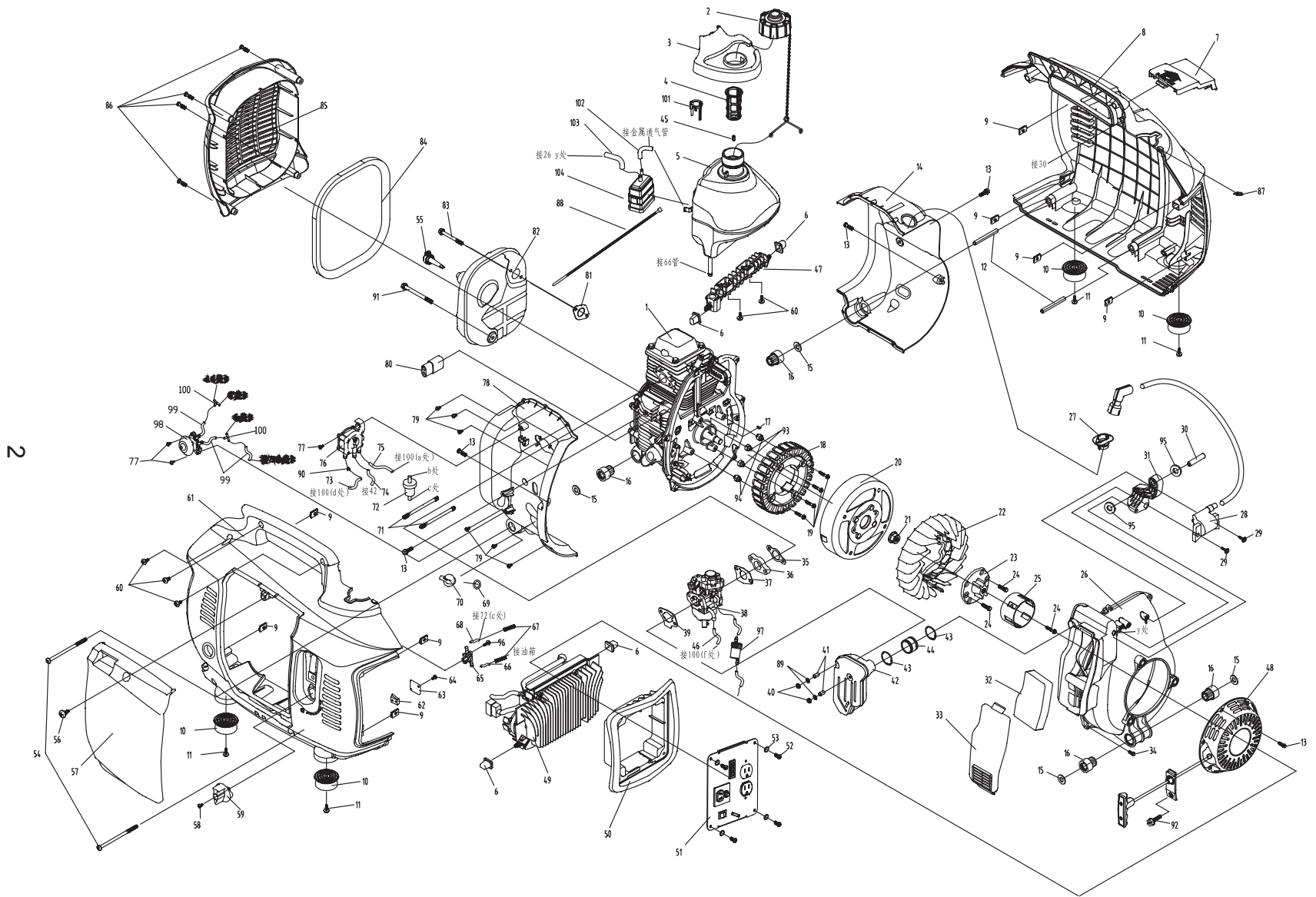


Parts Manual

iX2000 127cc CARB (Model 0067190)

NOTICE!

The information in this manual is known to be accurate as of the date of release shown on the cover. However, engineering changes can occur without notice. To obtain the proper parts, please be sure to use the serial number of the unit being serviced when ordering from this manual. Always refer to any parts notes and changes before ordering. All other parts not shown in this manual can be found on Generac's exploded view drawings online on GENservice at www.generac.com.



| Item | Part # | Qty | Description |
|------|------------|-----|---------------------------------|
| 1 | 0K2094 | 1 | ENGINE ASSEMBLY |
| 2 | 0J95780135 | 1 | FUEL CAP |
| 3 | 0J95710110 | 1 | RUBBER SPILL GUARD |
| 4 | 0J95780133 | 1 | FUEL FILTER(IN TANK) |
| 5 | 0K97200115 | 1 | FUEL TANK |
| 6 | 0H43470114 | 4 | RUBBER VIBRATION MOUNTS |
| 7 | 0H43470115 | 1 | LOWER SHELL COVER |
| 8 | 0H43470116 | 1 | LOWER SHELL |
| 9 | 0H43470117 | 8 | SCREW CLIP |
| 10 | 0H43470118 | 4 | VIBRATION MOUNT FEET |
| 11 | 0H43470119 | 4 | PHILIPS SCREW ST6.3X19 |
| 12 | 0H43470120 | 2 | BOTTOM MOUNTING PIN |
| 13 | 0H43470168 | 5 | FLANGED HEXAGON BOLT, M6X14 |
| 14 | 0H43470122 | 1 | SIDE WRAPPER |
| 15 | 0H43470123 | 4 | WASHER GASKET |
| 16 | 0H43470124 | 4 | DAMPING SLEEVE |
| 17 | 0J95710114 | 1 | WOODRUFF KEY, 3X6.5X16 |
| 18 | 0H43470126 | 1 | STATOR ASSEMBLY |
| 19 | 0H43470127 | 4 | FLANGED HEXAGON BOLT, M6X16 |
| 20 | 0H43470128 | 1 | FLYWHEEL/ROTOR ASSEMBLY |
| 21 | 0H43470129 | 1 | FLANGED HEXAGON NUT, M12X1.25-8 |
| 22 | 0H43470130 | 1 | BLADED FAN |
| 23 | 0H43470131 | 1 | STARTING JAW SEAT |
| 24 | 0J95780115 | 2 | FLANGED HEXAGON BOLT, M6X16 |
| 25 | 0H43470133 | 1 | STARTER CUP |
| 26 | 0H43470134 | 1 | BLOWER HOUSING |
| 27 | 0J95780127 | 1 | HIGH VOLTAGE RUBBER SLEEVE |
| 28 | 0H43470136 | 1 | IGNITION COIL |
| 29 | 0H43470137 | 2 | PHILLIPS SCREW, ST4.8X22 |
| 30 | 0H43470138 | 1 | TOP MOUNTING PIN |
| 31 | 0H43470139 | 1 | POTHOOK |
| 32 | 0H43470140 | 1 | AIR CLEANER |
| 33 | 0H43470141 | 1 | AIR CLEANER COVER |
| 34 | 0H43470142 | 6 | FLANGED HEXAGON BOLT, M6X16 |
| 35 | 0H43470143 | 1 | CARBURETOR GASKET, OUT B |
| 36 | 0H43470144 | 1 | CARBURETOR SPACER |
| 37 | 0J95710115 | 1 | CARBURETOR GASKET, OUT A |
| 38 | 0H43470146 | 1 | CARBURETOR ASSEMBLY |
| 39 | 0H43470147 | 1 | CARBURETOR GASKET IN |
| 40 | 0H43470148 | 6 | FLANGED HEXAGON NUT, M6 |
| 41 | 0H43470149 | 2 | OIL SPLASH COVER SPACER |
| 42 | 0H43470150 | 1 | OIL SPLASH CASE SUBASSEMBLY |
| 43 | 0H43470151 | 2 | SPRING CLIPS |
| 44 | 0H43470152 | 1 | FILTER ADAPTER SLEEVE |
| 45 | 0J95780132 | 1 | THREADED CAP |

| Item | Part # | Qty | Description |
|------|------------|-----|--------------------------------------|
| 46 | 0J95710117 | 1 | FUEL HOSE, 185MM |
| 47 | 0J95710116 | 1 | FUEL TANK BRACKET |
| 48 | 0H43470156 | 1 | RECOIL STARTER ASSEMBLY |
| 49 | 0H43470157 | 1 | INVERTER SUBASSEMBLY |
| 50 | 0H43470158 | 1 | CONTROL PANEL BRACE |
| 51 | 0H43470159 | 1 | CONTROL PANEL WITH DECAL |
| 52 | 0H63620149 | 4 | CROSS RECESSED PAN HEAD SCREW M5X25 |
| 53 | 0H43470161 | 4 | WASHER GASKET |
| 54 | 0H43470162 | 2 | CROSS RECESSED PAN HEAD SCREW M6X130 |
| 55 | 0H8811 | 1 | SPARK ARRESTOR |
| 56 | 0H63620151 | 1 | SCREW, M6X14 |
| 57 | 0H43470165 | 1 | LEFT SIDE SHELL COVER (UPPER) |
| 58 | 0H43470214 | 1 | CROSS RECESSED PAN HEAD SCREW, M4X12 |
| 59 | 0H43470167 | 1 | KNOB, FUEL SWITCH |
| 60 | 0H43470168 | 5 | CROSS RECESSED PAN HEAD SCREW, M6X14 |
| 61 | 0J95710119 | 1 | UPPER SHELL A |
| 62 | 0H43470170 | 1 | IGNITION SWITCH, ON/OFF |
| 63 | 0H43470171 | 1 | SWITCH COVER |
| 64 | 0J95780119 | 2 | PHILIPS SCREW, STR.2X9.5 |
| 65 | 0H43470173 | 1 | FUEL SWITCH |
| 66 | 0H43470174 | 1 | OUTLET HOSE |
| 67 | 0H43470175 | 2 | HOSE SPRING SHIELD |
| 68 | 0J95710120 | 1 | FUEL HOSE, 205MM |
| 69 | 0H43470177 | 1 | DIPSTICK GASKET. |
| 70 | 0J95710121 | 1 | OIL FILL CAP |
| 71 | 0J95710121 | 2 | STUD |
| 72 | 0H43470180 | 1 | FUEL FILTER |
| 73 | 0J95710122 | 1 | FUEL HOSE OUTLET, 90MM |
| 74 | 0H43470182 | 1 | FUEL PUMP AIR HOSE |
| 75 | 0J95710123 | 1 | FUEL HOSE, 115MM |
| 76 | 0H43470184 | 1 | FUEL PUMP ASSEMBLY |
| 77 | 0H43470185 | 3 | PHILIPS SCREW ST4.8X19 |
| 78 | 0H43470186 | 1 | UPPER ENGINE WRAPPER |
| 79 | 0H56810153 | 6 | PHILIPS SCREW, ST4.2X13 |
| 80 | 0H43470188 | 1 | RESPERATOR REDUCING SLEEVE |
| 81 | 0H43470189 | 1 | MUFFLER GASKET |
| 82 | 0J95710124 | 1 | MUFFLER ASSEMBLY |
| 83 | 0H43470191 | 2 | FLANGED HEXAGON BOLT, M6X60 |
| 84 | 0H43470192 | 1 | EXHAUST COVER SEAL |
| 85 | 0K97200110 | 1 | EXHAUST COVER |
| 86 | 0H63620168 | 4 | CROSS RECESSED HEAD SCREW, M5X20 |
| 87 | 0H43470195 | 1 | RETAINING CLIP |
| 88 | 0K97200111 | 2 | CABLE TIES |



IX2000

| Item | Part # | Qty | Description |
|------|------------|-----|----------------------------------|
| 89 | 0H43470213 | 2 | GASKET |
| 90 | 0J95780113 | 10 | FUEL HOSE CLAMP |
| 91 | 0H43470199 | 1 | FLANGED HEXAGON BOLT, M6X80 |
| 92 | 0H43470200 | 1 | PHILIPS SCREW WITH WASHER, M5X12 |
| 93 | 0H43470201 | 2 | HOLLOW GUIDE PIN A |
| 94 | 0H43470202 | 2 | HOLLOW GUIDE PIN B |
| 95 | 0H43470203 | 2 | POTHOOK GASKET |
| 96 | 0H43470119 | 1 | PHILIPS SCREW, ST6.3X16 |
| 97 | 0J95780143 | 1 | FUEL FILTER |
| 98 | 0J95780137 | 1 | FUEL PRIMER BULB |
| 99 | 0J95780111 | 3 | FUEL HOSE, 45MM |
| 100 | 0J95780128 | 2 | FUEL HOSE TEE CONNECTORS |
| 101 | 0J95780146 | 1 | FILTER LEVEL |
| 102 | 0K97200112 | 1 | RUBBER VENTILATION HOSE |
| 103 | 0K97200113 | 1 | RUBBER VENTILATION HOSE |
| 104 | 0K97200114 | 1 | CARBON CANISTER, 45cc |
| N/S | 0J95710125 | 1 | SEALING RING OF PRIMER BULB |
| N/S | 0J95710126 | 1 | FIXED SEAT OF PRIMER BULB |
| N/S | 0J95710127 | 1 | PRIMER BULB CONNECTING SEAT |
| N/S | 0J95710128 | 1 | PRIMER BULB CASING SEAL |
| N/S | 0K82060SRV | 1 | PRIMER BULB ASSEMBLY KIT |

©2014 Generac Power Systems, Inc. All rights reserved.
 Specifications are subject to change without notice
 No reproduction allowed in any form without prior written consent from Generac Power Systems, Inc.