



SERVICE PARTS LIST

BULLETIN NO.
55-06-2827

SPECIFY CATALOG NO. AND SERIAL NO. WHEN ORDERING PARTS		REVISED BULLETIN 55-06-2826	DATE June 2012
6.5mm DRILL			
CATALOG NO.	0101-50	STARTING SERIAL NO.	064C
		WIRING INSTRUCTION See Pages 2 & 3	

★=Part number change from previous service parts list.

EXAMPLE:
Component Parts (Small #) Are Included When Ordering The Assembly (Large #).

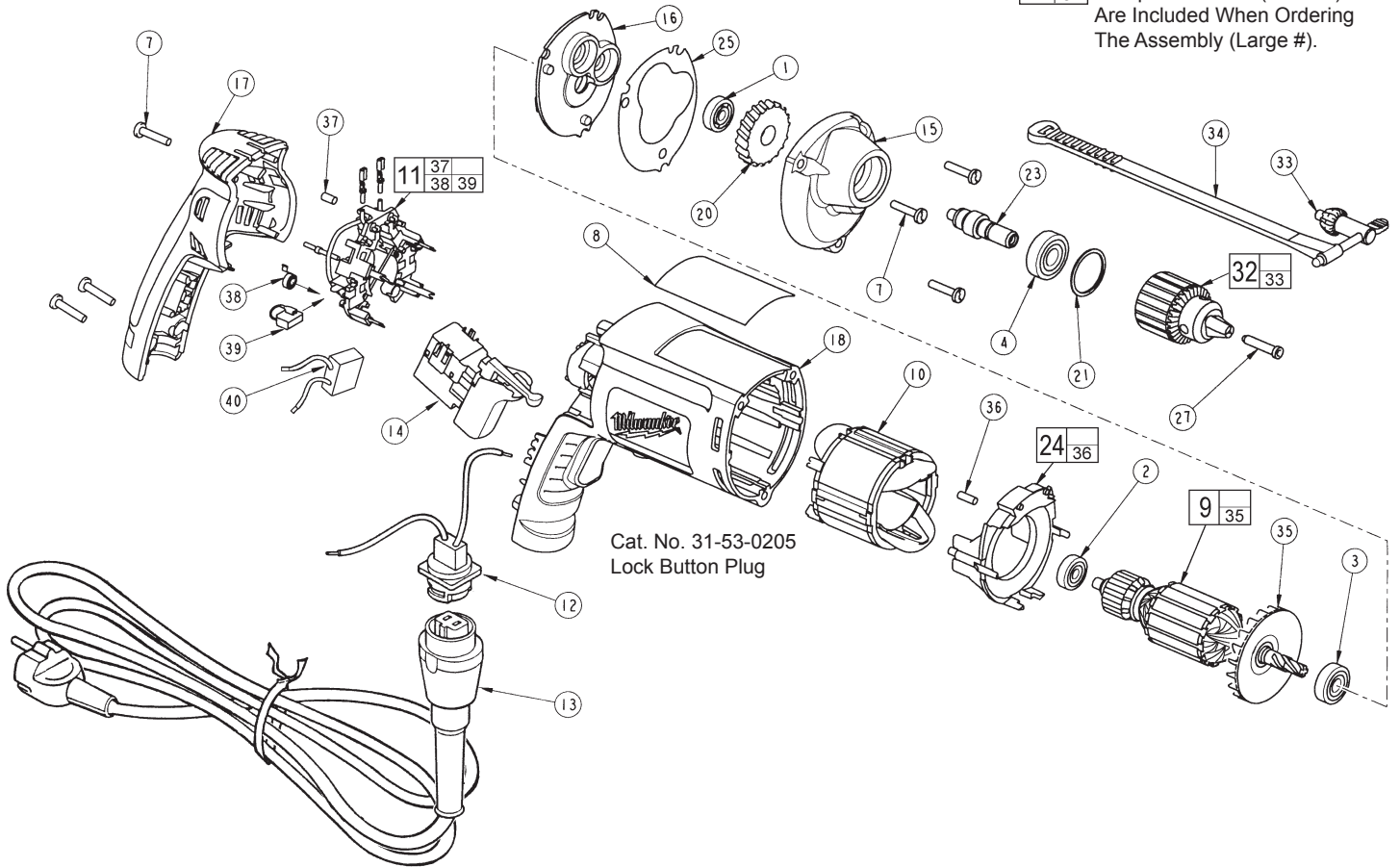


FIG.	PART NO.	DESCRIPTION OF PART	NO. REQ.
	1	02-04-0640 Ball Bearing	(1)
	2	02-04-0645 Ball Bearing	(1)
	3	02-04-0852 Ball Bearing	(1)
	4	02-04-1019 Ball Bearing	(1)
	7	06-82-7275 7-18 x 3/4 Slotted Plastite T-20	(6)
	8	12-99-2680 Service Nameplate	(1)
	9	16-14-2201 Armature	(1)
	10	18-04-2200 Field	(1)
	11	22-18-1220 Brush Card Assembly	(1)
	12	22-56-1015 Blade Housing Assembly	(1)
	13	48-76-5012 Quik-Lok Cord Set	(1)
	13	22-64-0684 Quik-Lok Cord Set (Australia)	(1)
★	14	23-66-2615 Defond Switch (See page 2 wiring)	(1)
★	14a	23-66-2135 Marquardt Switch (See page 3 wiring)	(1)
	15	28-14-2385 Gearcase	(1)
	16	28-28-2315 Diaphragm	(1)
	17	31-15-2030 Handle Halve	(1)
★	18	31-50-4030 Motor Housing	(1)
	20	32-75-0121 Spindle Gear	(1)
	21	34-80-1400 Retaining Ring	(1)
	23	38-50-5745 Spindle	(1)
	24	42-14-0460 Baffle Assembly	(1)
	25	43-44-0985 Gasket	(1)
	27	45-04-0750 Chuck Screw	(1)
	32	48-66-0070 6.5mm Chuck	(1)
	33	48-66-3350 Chuck Key	(1)
	34	48-66-4080 Chuck Key Holder	(1)
	35	22-84-0840 Fan	(1)
	36	45-30-0030 Slug	(2)
	37	45-30-0035 Slug	(1)

FIG.	PART NO.	DESCRIPTION OF PART	NO. REQ.
	38	23-52-1610 Brush Spring	(2)
	39	22-18-1320 Brush Assembly	(2)
	40	22-33-0550 Suppressor	(1)

FIG. LUBRICATION:
15 Place .24 oz. (6.8 grams) of type "Y" grease, No. 49-08-5270, at the armature pinion location in the gearcase pocket and push down .20".

Before assembly, lightly coat all press fit areas with type "Y" grease.

WIRING INSTRUCTIONS

TITLE **SINGLE REDUCTION PISTOL GRIP TOOLS - DEFOND SWITCH**

BULLETIN

MILWAUKEE ELECTRIC TOOL CORP. 13135 WEST LISBON RD. BROOKFIELD, WIS.

DATE

Route white field wire #5 from brush card between the post and the top of the rear bearing bore first and then around bearing bore as shown.

Route blue brush wire #8 and white brush wire #9 through wire traps and over rear bearing bore as shown.

Route brown field wire #6 from the brush card through any of the three traps in tab on the motor housing, as shown. Insert wire #6 into hole "2a" on the bottom of the switch. (The hole is marked with a "2a" on the side of the switch).

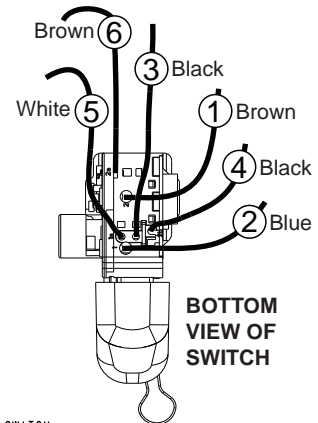
Route white field wire #5 from the brush card around the post in the motor housing and into either hole "1a" and "2b" on the bottom of the switch.

Insert brown wire #1, from the cord or blade housing assembly, into the hole marked "2" on the bottom of the switch.

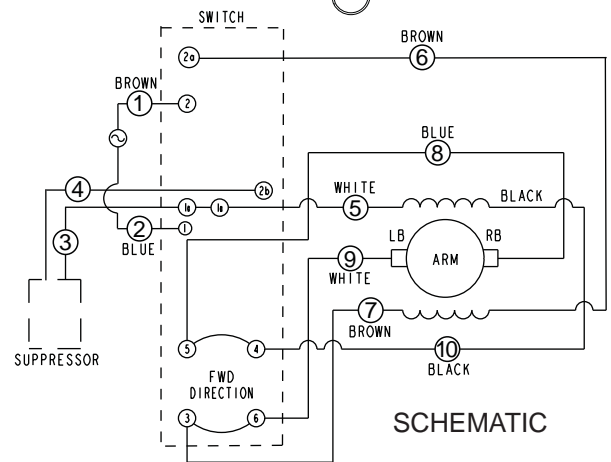
Insert blue wire #2, from the cord or blade housing assembly, into the hole marked "1" on the bottom of the switch.

Insert black suppressor wires #3 and #4 into holes marked "1a" and "2b" on the bottom of the switch. Wires can go in either hole.

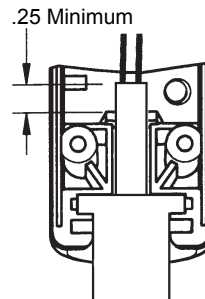
Fixed cord shown



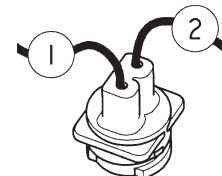
BOTTOM VIEW OF SWITCH



SCHEMATIC



Fixed Cord Installation



For double insulated tools with 2-wire quik-lok cords, orientate the blade housing assembly as shown and place blue wire #2 first into the bottom of the handle portion of the motor housing.

WIRING SPECIFICATIONS

Wire No.	Wire Color	Origin or Gauge	Length	Terminals, Connectors and 1 or 2 End Wire Preparation
1	Brown	*	----	* Component of cord set or blade housing assembly.
2	Blue	*	----	* Component of cord set or blade housing assembly.
3	Black	**	----	** Component of suppressor assembly.
4	Black	**	----	** Component of suppressor assembly.
5	White	***	----	*** Component of the brush card assembly.
6	Brown	***	----	*** Component of the brush card assembly.
7	Brown	***	----	*** Component of the brush card assembly.
8	Blue	***	----	*** Component of the brush card assembly.
9	White	***	----	*** Component of the brush card assembly.
10	Black	***	----	*** Component of the brush card assembly.

BULK LEAD WIRE - BULLETIN NO. 58-01-0003

TERMINAL DESCRIPTION

Code	Part No.	Qty.
T1	23-74-1060	

WIRING INSTRUCTIONS

TITLE **SINGLE REDUCTION PISTOL GRIP TOOLS - MARQUARDT SWITCH**

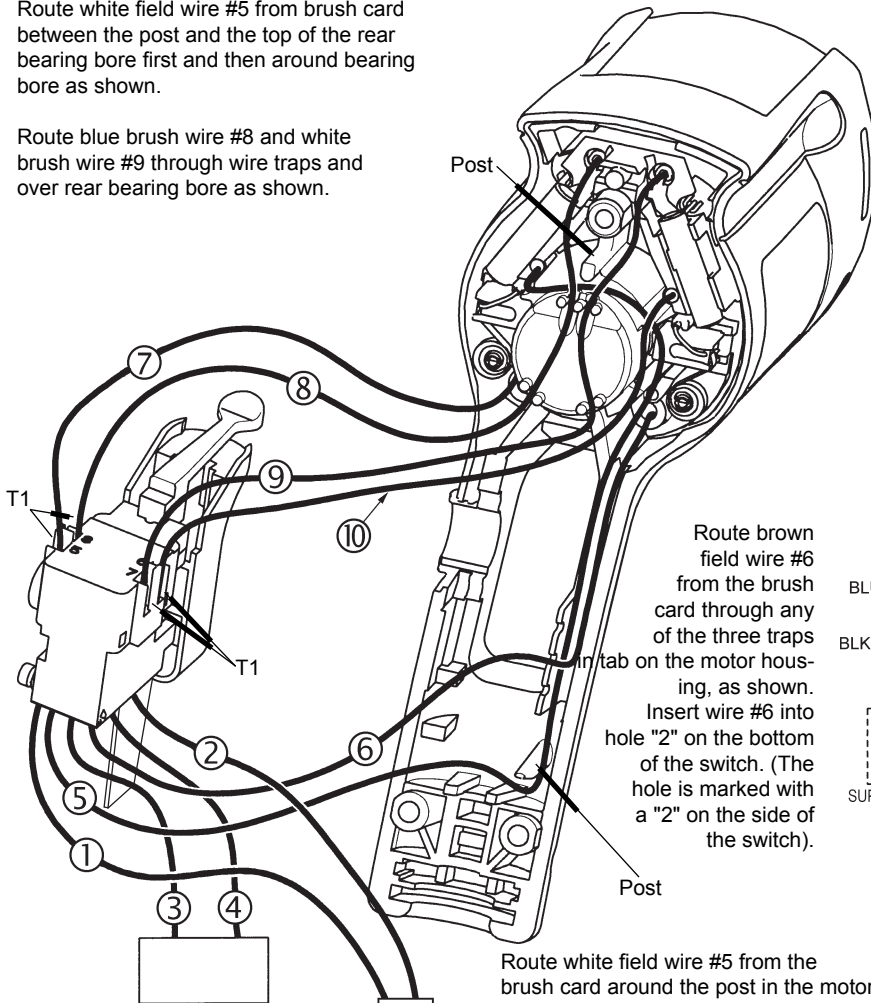
BULLETIN

MILWAUKEE ELECTRIC TOOL CORP. 13135 WEST LISBON RD. BROOKFIELD, WIS.

DATE

Route white field wire #5 from brush card between the post and the top of the rear bearing bore first and then around bearing bore as shown.

Route blue brush wire #8 and white brush wire #9 through wire traps and over rear bearing bore as shown.



Route brown field wire #6 from the brush card through any of the three traps in a tab on the motor housing, as shown. Insert wire #6 into hole "2" on the bottom of the switch. (The hole is marked with a "2" on the side of the switch).

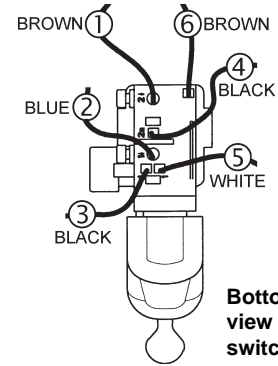
Route white field wire #5 from the brush card around the post in the motor housing and into either hole "1" and "2A" on the bottom of the switch.

Insert brown wire #1, from the cord or blade housing assembly, into the hole marked "2" on the bottom of the switch.

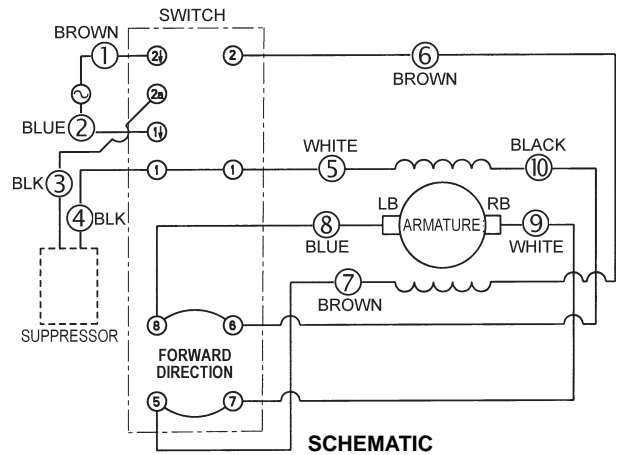
Insert blue wire #2, from the cord or blade housing assembly, into the hole marked "1" on the bottom of the switch.

Insert black suppressor wires #3 and #4 into holes marked "1" and "2A" on the bottom of the switch. Wires can go in either hole.

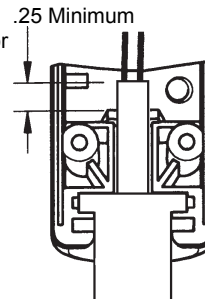
Fixed cord shown



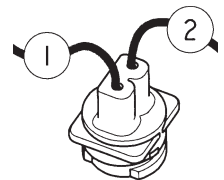
Bottom view of switch



SCHEMATIC



Fixed Cord Installation



For double insulated tools with 2-wire quik-lok cords, orientate the blade housing assembly as shown and place blue wire #2 first into the bottom of the handle portion of the motor housing.

WIRING SPECIFICATIONS

Wire No.	Wire Color	Origin or Gauge	Length	Terminals, Connectors and 1 or 2 End Wire Preparation
1	Brown	*	----	* Component of cord set or blade housing assembly.
2	Blue	*	----	* Component of cord set or blade housing assembly.
3	Black	**	----	** Component of suppressor assembly.
4	Black	**	----	** Component of suppressor assembly.
5	White	***	----	*** Component of the brush card assembly.
6	Brown	***	----	*** Component of the brush card assembly.
7	Brown	***	----	*** Component of the brush card assembly.
8	Blue	***	----	*** Component of the brush card assembly.
9	White	***	----	*** Component of the brush card assembly.
10	Black	***	----	*** Component of the brush card assembly.

BULK LEAD WIRE - BULLETIN NO. 58-01-0003

TERMINAL DESCRIPTION

Code	Part No.	Qty.
T1	23-74-1060	