



SERVICE PARTS LIST

BUL.54-06-0700

1/4" PISTOL DRILL

REVISED BUL
54-06-0700

DATE
Aug. '70

Catalog No. 0125

Starting
Serial No. **322-1001**

WIRING INSTR.
58-01-0130

Both Model and Serial No. must be furnished to obtain correct parts.

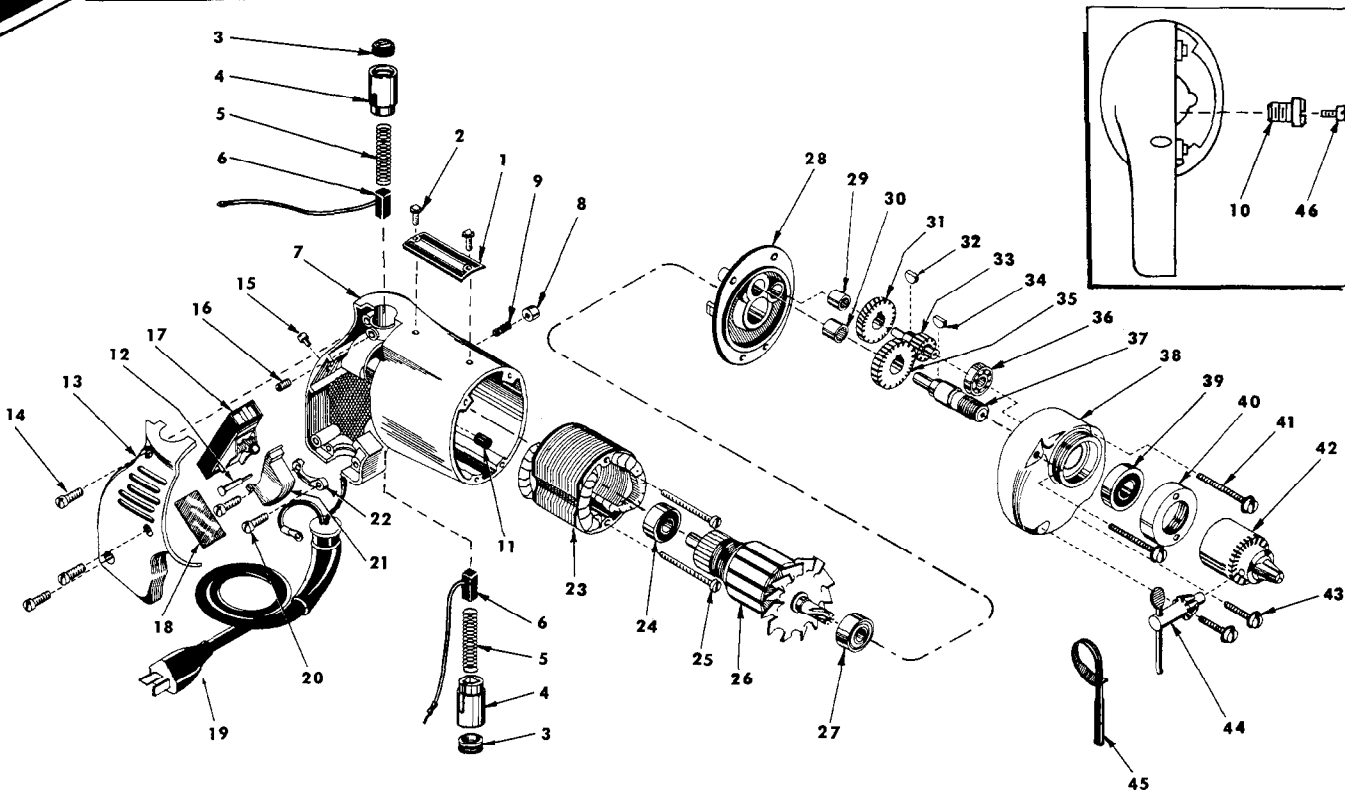


FIG.	PART NO.	DESCRIPTION OF PART	NO.REQ.
	1	12-98-0600 Name Plate	
★	2	06-85-0200 Name Plate Screw	(2)
	3	23-44-0020 Brush Retaining Cap	(2)
	4	22-22-0200 Brush Holder Assembly	(2)
	5	23-52-0090 Brush Spring	
	6	22-18-0310 Carbon Brush Assembly	(2)
	7	28-50-4449 Motor Housing (Inc.items 8 Thru 14)	
	8	42-42-0061 Trigger Lock Button	
	9	40-50-1200 Trigger Lock Spring	
★	10	42-34-0101 Nylon Terminal Boss Assy.	
	11	45-30-0060 Ball Bearing Ret. Slug	
	12	44-70-0071 Trigger Lock Shaft	
	13	28-20-3002 Handle Cover	
	14	06-81-6150 8-32x1/2 Fil.Hd.Sems Handle Cover Sc.(3)	
	15	06-81-5800 6-32x5/16 Fil.Hd. Sems Switch Mtg. Screw	
★	16	06-83-2430 10-32 x1/4 Hdls.Skt. Screw	(2)
	17	23-66-0280 Switch	
	18	23-16-0265 Switch Insulator	
	19	22-64-0310 Cord Set	
	20	06-81-6150 8-32x1/2 Fil.Hd.Sems Cord Clamp Scr. (2)	
★	21	31-92-0102 Switch Trigger	
	22	28-17-0400 Cord Clamp	
	23	18-20-1000 12 V.Field	

FIG.	PART NO.	DESCRIPTION OF PART	NO.REQ.
	24	02-04-0740 Armature Ball Bearing (Comm. End)	
	25	06-81-5950 6-32x1-7/8 Fil.Hd. Field Screws	(2)
	26	16-20-1010 12 V.Armature	
	27	02-04-0880 Armature Ball Bearing (Pinion End)	
	28	28-28-0221 Diaphragm	
	29	02-50-1210 Needle Bearing	
	30	02-50-1640 Needle Bearing	
	31	32-40-1041 Intermediate Gear	
	32	06-42-0400 No. 201 Woodruff Key	
	33	36-66-1151 Intermediate Pinion Shaft	
	34	06-42-0800 Woodruff Key	
	35	32-75-1181 Spindle Gear	
	36	02-04-0640 Intermediate Shaft Ball Bearing	
	37	38-50-1051 Spindle	
	38	28-14-0361 Gear Case	
	39	02-04-1020 Ball Bearing	
	40	42-52-0060 Bearing Cap	
	41	06-81-6550 8-32x1 1/2 Fil.Hd.Sems Gear Case Scrs. (2)	
	42	48-66-0260 Chuck	
	43	06-81-6300 8-32x7/8 Fil.Hd.Sems Gear Case Scrs. (2)	
	44	48-66-3200 Chuck Key	
	45	48-66-4080 Key Holder	
★	46	06-81-0110 6-32 x5/16 Pan Hd.Screw	