



SERVICE PARTS LIST

BULLETIN NO.
54-06-0670

SPECIFY CATALOG NO. AND SERIAL NO. WHEN ORDERING PARTS		REVISED BULLETIN	DATE
1/4" HOLE-SHOOTER			Aug. '99
CATALOG NO. 0141-1	STARTING SERIAL NO. 708-1001	WIRING INSTRUCTION	
		58-01-0016	

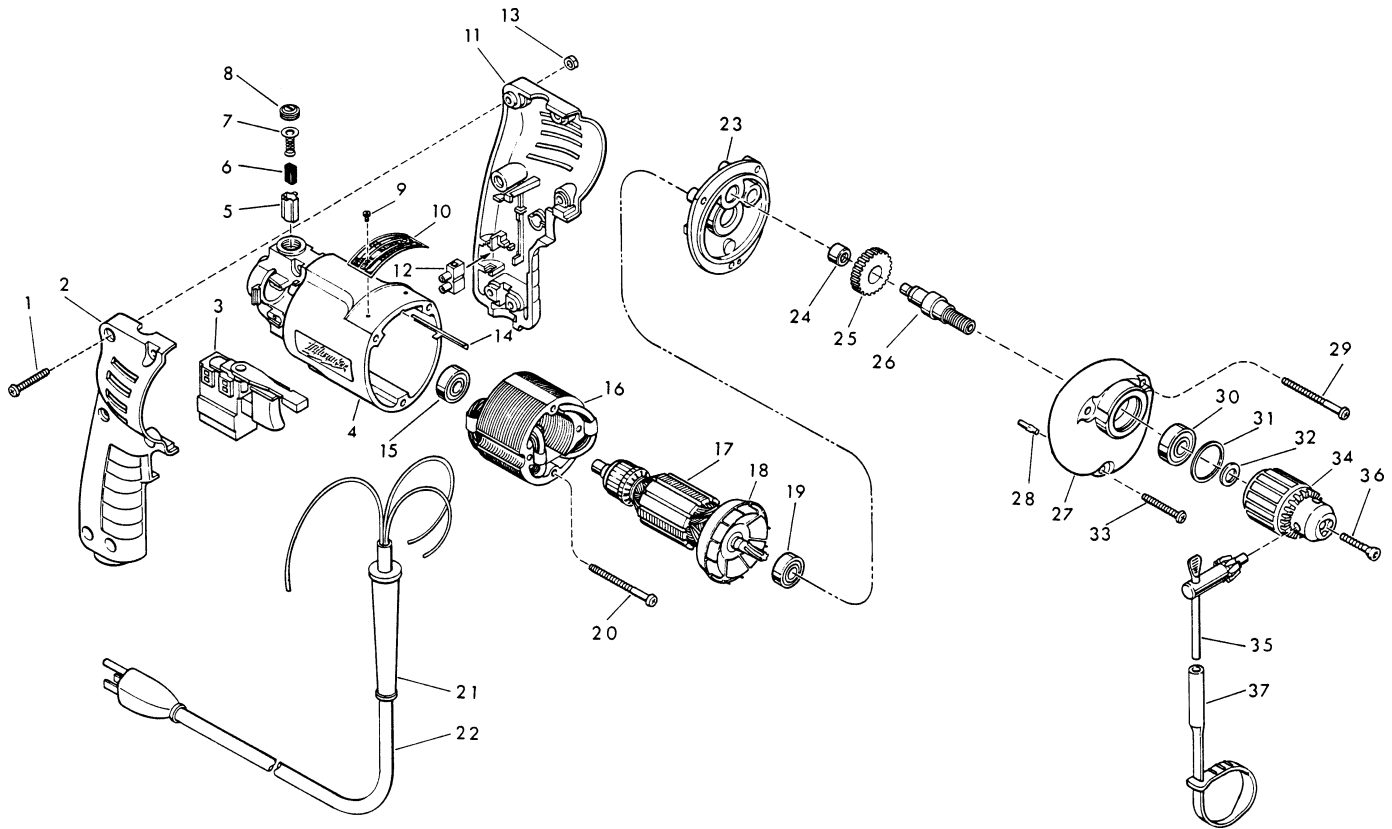


FIG. PART NO.	DESCRIPTION OF PART	NO. REQ.
1	06-81-0473 8-32 x 1" Pan Hd. Pozi Drive Screw	(6)
2	31-44-1130 Right Handle Half	(1)
3	23-66-1245 Speed Control Switch	(1)
4	31-50-0345 Motor Housing	(1)
5	22-20-0530 Brush Tube	(2)
6	22-16-0275 Carbon Brush	(2)
7	23-52-0210 Brush Spring Assembly	(2)
8	23-44-0120 Brush Retaining Screw	(2)
9	06-85-0200 Nameplate Screw	(2)
10	12-99-0420 Service Nameplate	(1)
11	31-44-1140 Left Handle Half	(1)
12	22-56-0455 Terminal Block	(1)
13	06-55-0835 8-32 Hex Nut	(6)
14	44-60-0530 Ground Pin	(1)
15	02-04-0645 Ball Bearing	(1)
16	18-11-0060 120 Volt Field	(1)
17	16-10-0460 120 Volt Armature	(1)
18	22-84-0760 Fan Assembly	(1)
19	02-04-0847 Ball Bearing	(1)
20	06-95-0145 7-18 x 1-3/4" Pan Hd. Pozi Drive Screw	(2)
21	44-76-0130 Cord Protector	(1)
22	22-64-1120 Cord Set	(1)
23	28-28-1780 Diaphragm	(1)
24	02-50-1620 Needle Bearing	(1)
25	32-75-3250 Spindle Gear	(1)
26	38-50-5670 Spindle	(1)
27	28-14-1830 Gear Case	(1)
28	06-65-0825 1/8 x 1/2" Groove Pin 5	(1)
29	06-95-0175 7-18 x 1-1/2" Pan Hd. Pozi Drive Screw	(2)

FIG. PART NO.	DESCRIPTION OF PART	NO. REQ.
30	02-04-1020 Ball Bearing	(1)
31	34-80-1400 Retaining Ring	(1)
32	45-88-7940 Chuck Washer	(1)
33	06-95-0137 7-18 x 1-1/8" Pan Hd. Pozi Drive Screw	(1)
34	48-66-0070 1/4" Chuck	(1)
35	48-66-3200 Chuck Key	(1)
36	45-04-0750 Chuck Screw-L.H. Thread	(1)
37	48-66-4080 Key Holder	(1)

FIG. LUBRICATION
27 1-1/8 Oz. Type "E" Grease, No. 49-08-4122.
Place In Center Of Gear Case.

FIG. NOTES
36 Torque to 30-50 In./Lbs.
24 Press flush to casting surface.
15,19 Seal towards armature.
30 Seal towards chuck.