



SERVICE PARTS LIST

BULLETIN NO.
54-06-1700

SPECIFY CATALOG NO. AND SERIAL NO. WHEN ORDERING PARTS		REVISED BULLETIN	DATE
HI-TORQUE 3/8" CORDLESS DRIVER/DRILL			Feb.'91
CATALOG NO. 0218-1	DATE CODE 890124	WIRING INSTRUCTION See Reverse Side	

EXAMPLE:

00	0
----	---

 Component Parts (Small #) Are Included
 When Ordering The Assembly (Large #).

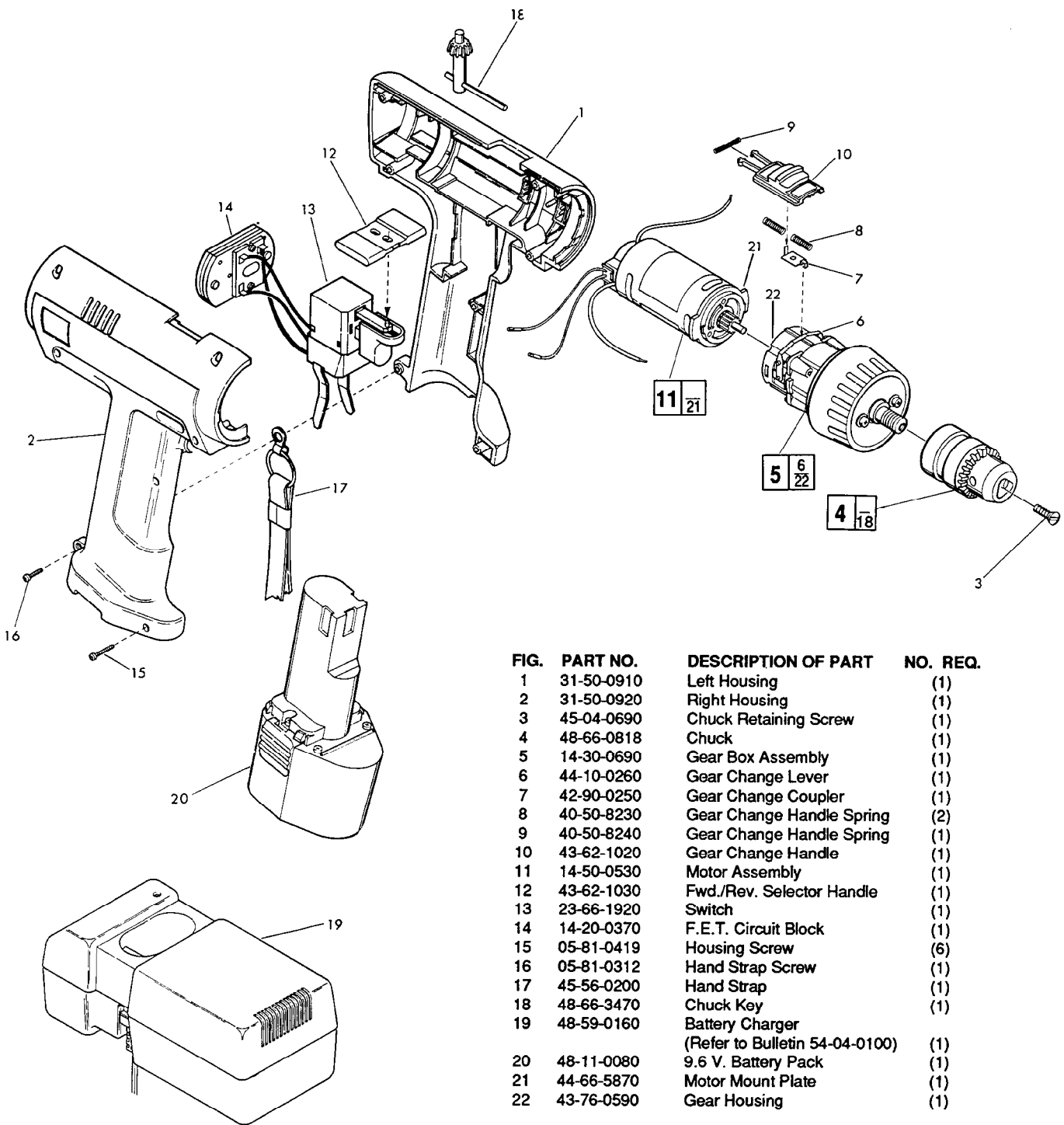
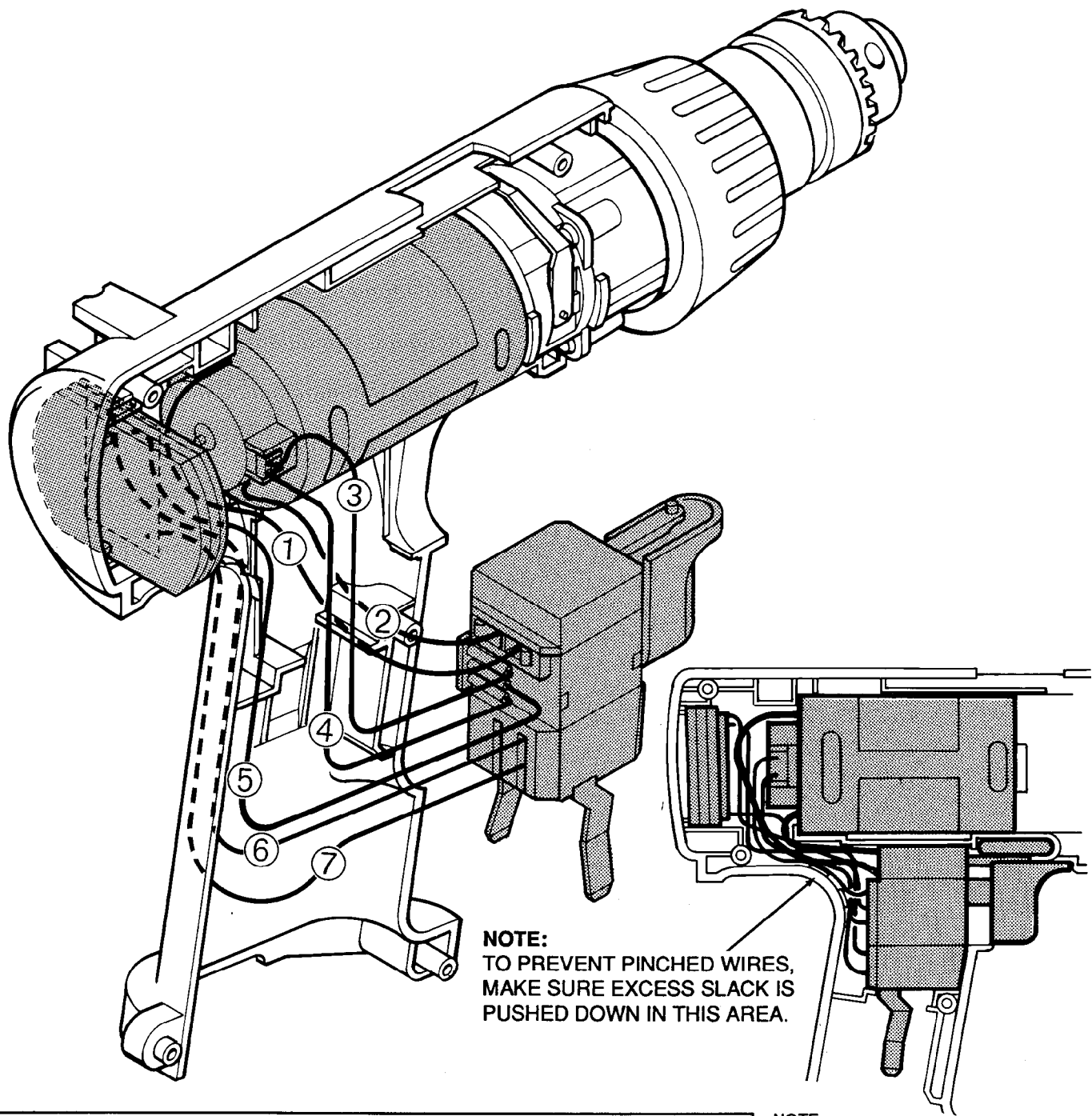


FIG.	PART NO.	DESCRIPTION OF PART	NO. REQ.
1	31-50-0910	Left Housing	(1)
2	31-50-0920	Right Housing	(1)
3	45-04-0690	Chuck Retaining Screw	(1)
4	48-66-0818	Chuck	(1)
5	14-30-0690	Gear Box Assembly	(1)
6	44-10-0260	Gear Change Lever	(1)
7	42-90-0250	Gear Change Coupler	(1)
8	40-50-8230	Gear Change Handle Spring	(2)
9	40-50-8240	Gear Change Handle Spring	(1)
10	43-62-1020	Gear Change Handle	(1)
11	14-50-0530	Motor Assembly	(1)
12	43-62-1030	Fwd./Rev. Selector Handle	(1)
13	23-66-1920	Switch	(1)
14	14-20-0370	F.E.T. Circuit Block	(1)
15	05-81-0419	Housing Screw	(6)
16	05-81-0312	Hand Strap Screw	(1)
17	45-56-0200	Hand Strap	(1)
18	48-66-3470	Chuck Key	(1)
19	48-59-0160	Battery Charger	(1)
		(Refer to Bulletin 54-04-0100)	
20	48-11-0080	9.6 V. Battery Pack	(1)
21	44-66-5870	Motor Mount Plate	(1)
22	43-76-0590	Gear Housing	(1)



NOTE:
TO PREVENT PINCHED WIRES,
MAKE SURE EXCESS SLACK IS
PUSHED DOWN IN THIS AREA.

WIRING SPECIFICATIONS

Wire No.	Wire Color	Origin or Gauge	Length	Terminals, Connectors and 1 or 2 End Wire Preparation
1	White	16 Ga.	3-3/4"	Component of motor assembly. +
2	Black	16 Ga.	2-1/2"	Component of motor assembly. -
3	Black	18 Ga.	3-1/4"	Component of motor assembly.
4	Black	18 Ga.	3-1/4"	Component of motor assembly.
5	Green	18 Ga.	4-1/4"	Component of F.E.T. circuit block.
6	Red	18 Ga.	3-3/4"	Component of F.E.T. circuit block.
7	Black	18 Ga.	5"	Component of F.E.T. circuit block.

NOTE:
All leads must be held to $\pm 1/8"$.
All field leads to be measured from
and perpendicular to laminations.
All lead lengths are before stripping.

TERMINAL DESCRIPTION		
Code	Part No.	Qty.
CONNECTOR DESCRIPTION		