



SERVICE PARTS LIST

BUL. 54-06-2400

3/8" PISTOL DRILL

REVISED BUL. 54-06-2400 DATE Aug. '70

Catalog No. 0225

Starting Serial No. **316-1001**

WIRING INSTR. **58-01-0130**

Both Model and Serial No. must be furnished to obtain correct parts.

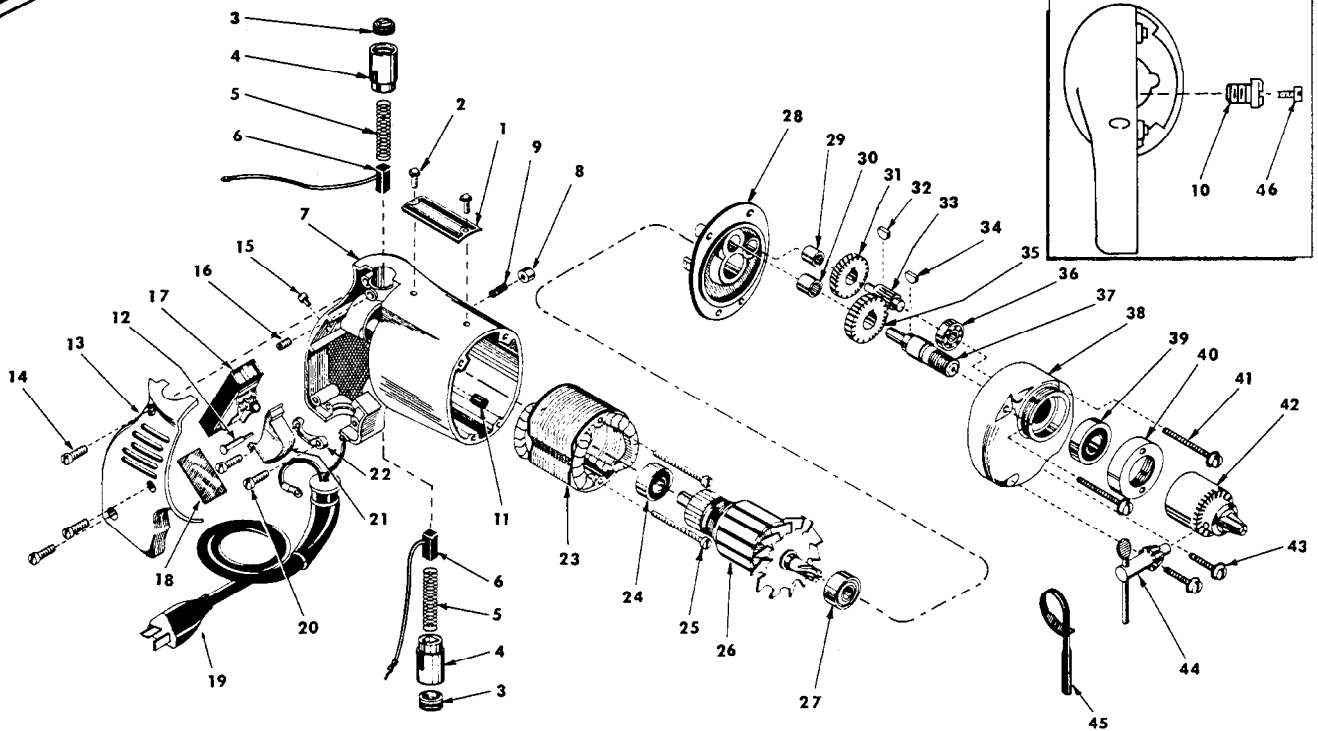


FIG.	PART NO.	DESCRIPTION OF PART	NO. REQ.	FIG.	PART NO.	DESCRIPTION OF PART	NO. REQ.
	1	12-98-0600 Name Plate		24	02-04-0740	Armature Ball Bearing (comm. end)	
★	2	06-85-0200 Name Plate Screw	(2)	25	06-81-5950	6-32x1-7/8 Fil. Hd. Field Scr.	(2)
	3	23-44-0020 Brush Retaining Cap	(2)	26	16-20-1000	12 Volt Armature	
	4	22-22-0200 Brush Holder Assy.	(2)	27	02-04-0740	Armature Ball Bearing (pinion end)	
	5	23-52-0090 Carbon Brush Spring	(2)	28	28-28-0221	Diaphragm	
	6	22-18-0310 Carbon Brush Assy.	(2)	29	02-50-1210	Needle Bearing	
	7	28-50-4449 Motor Housing Assy. (Incl. Figs. 8 thru 14)		30	02-50-1640	Needle Bearing	
	8	42-42-0061 Trigger Lock Button		31	32-40-1121	Intermediate Gear	
	9	40-50-1200 Trigger Lock Spring		32	06-42-0400	Woodruff Key	
★	10	42-34-0101 Nylon Terminal Boss Assy.		33	36-66-0851	Intermediate Pinion Shaft	
	11	45-30-0060 Ball Bearing Ret. Slug		34	06-42-0800	Woodruff Key	
	12	44-70-0071 Trigger Lock Shaft		35	32-75-1101	Spindle Gear	
	13	28-20-3002 Handle Cover		36	02-04-0640	Intermediate Shaft Ball Bearing	
	14	06-81-6150 8-32x 1/2 Fil. Hd. Handle Cover Scr.	(3)	37	38-50-1051	Spindle	
	15	06-81-5800 6-32x5/16 Fil. Hd. Switch Mtg. Scr.		38	28-14-0361	Gear Case	
★	16	06-83-2430 10-32 x 1/4 Hdis. Skt. Screw	(2)	39	02-04-1020	Ball Bearing	
	17	23-66-0280 Switch		40	42-52-0060	Bearing Cap	
	18	06-97-1800 Switch Lock Washer (not shown)	(4)	41	06-81-6550	8-32x 1-1/2 Fil. Hd. Gear Case Scr.	(2)
	19	23-16-0265 Switch Insulator		42	48-66-0800	Chuck	
	20	22-64-0310 Cord Set		43	06-81-6300	8-32x7/8 Fil. Hd. Gear Case Scr.	(2)
	21	31-92-0102 Switch Trigger		44	48-66-3080	Chuck Key	
	22	28-17-0400 Cord Clamp		45	48-66-4040	Key Holder	
	23	18-20-1000 12 Volt Field		★46	06-81-0110	6-32 x5/16 Pan Hd. Screw	