



SERVICE PARTS LIST

BULLETIN NO.
54-06-0575

SPECIFY CATALOG NO. AND SERIAL NO. WHEN ORDERING PARTS		REVISED BULLETIN	DATE
3/8" T.S.C. REV. HOLE-SHOOTER		54-06-0574	May '99
CATALOG NO. 0228-1	STARTING SERIAL NO. 689B	WIRING INSTRUCTION 58-01-0031	

EXAMPLE:
Component Parts (Small #)
Are Included When Ordering
The Assembly (Large #).

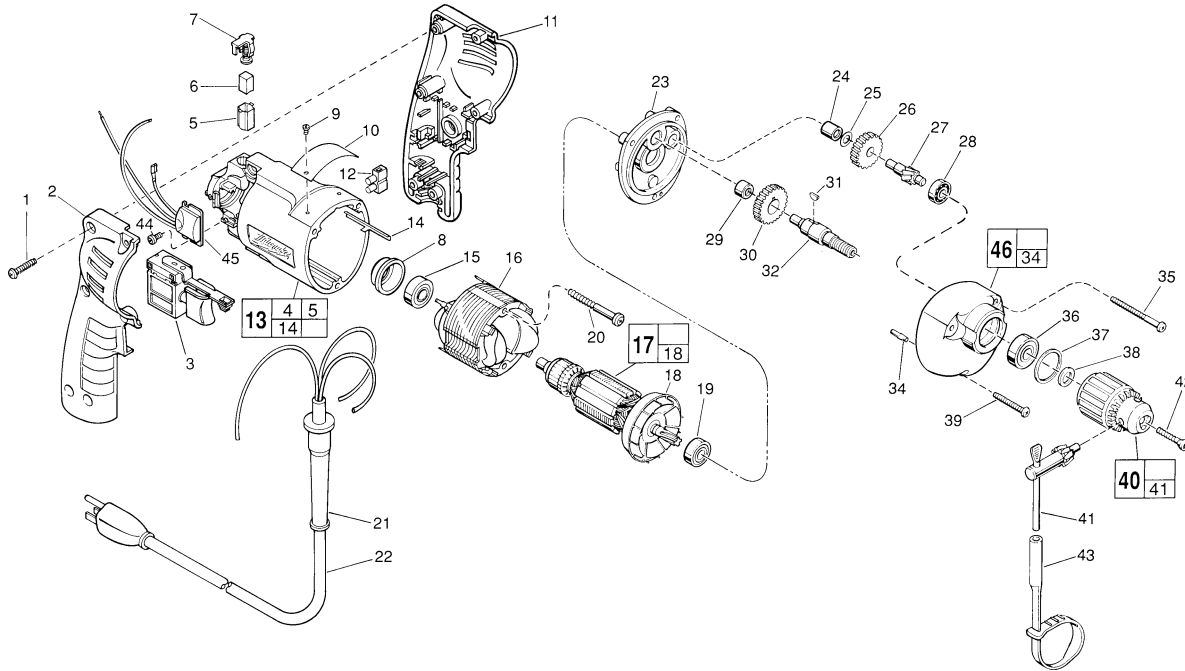


FIG.	PART NO.	DESCRIPTION OF PART	NO. REQ.
	1	06-82-7284 8-16 x 3/4" Pan Hd. Slit. Plast. T-20	(6)
	2	31-44-1745 Right Handle Half	(1)
	3	23-66-2145 Speed Control Switch	(1)
	4	23-94-6225 Ground Wire Assembly (Not Shown)	(1)
	5	22-20-0830 Brush Tube	(2)
	6	22-16-0275 Carbon Brush	(2)
	7	23-52-1560 Brush Spring Assembly	(2)
	8	22-72-0100 Bearing Cup	(1)
★	9	06-72-1720 Nameplate Rivet	(2)
	10	12-99-0850 Service Nameplate	(1)
	11	31-44-1740 Left Handle Half	(1)
	12	22-56-0456 Terminal Block	(1)
★	13	14-38-0601 Motor Housing Assembly	(1)
	14	44-60-0530 Ground Pin	(1)
	15	02-04-0645 Ball Bearing	(1)
	16	18-11-0060 120 Volt Field	(1)
	17	16-10-0470 120 Volt D.I. Armature	(1)
	18	22-84-0760 Fan Assembly	(1)
	19	02-04-0851 Ball Bearing	(1)
	20	06-82-7393 7-18 x 2" Pan Hd. Slit. Plast. T-20	(2)
	21	44-76-0210 Cord Protector	(1)
	22	22-64-1120 Cord Set	(1)
	23	28-28-1940 Diaphragm	(1)
	24	02-50-1210 Needle Bearing	(1)
	25	45-88-7301 Heat Treated Washer	(1)
	26	32-40-1950 Intermediate Gear	(1)
	27	36-66-4380 Intermediate Pinion Shaft	(1)
	28	02-04-0640 Ball Bearing	(1)
	29	02-50-1620 Needle Bearing	(1)
	30	32-75-3230 Spindle Gear	(1)

FIG.	PART NO.	DESCRIPTION OF PART	NO. REQ.
	31	06-42-0800 Woodruff Key	(1)
	32	38-50-5660 Reversing Spindle	(1)
	34	06-65-0825 1/8 x 1/2" Groove Pin 5	(1)
	35	06-82-7368 7-18 x 1-3/4" Pan Hd. Slit. Plast T-20	(2)
	36	02-04-1020 Ball Bearing	(1)
	37	34-80-1400 Retaining Ring	(1)
	38	45-88-7940 Chuck Washer	(1)
	39	06-82-7308 7-18 x 1-1/8" Pan Hd. Slit. Plast. T-20	(1)
	40	48-66-0795 3/8" Chuck	(1)
	41	48-66-3240 Chuck Key	(1)
	42	45-04-0750 Chuck Screw - L.H. Thread	(1)
	43	48-66-4040 Key Holder	(1)
	44	06-82-7212 4-20 x 1/4" Pan Hd. Slit. Plast. T-10	(1)
★	45	14-20-0750 Remote Electronic Assembly	(1)
	46	14-30-0620 Gear Case Assembly	(1)

FIG. LUBRICATION
46 1-1/2 Oz. Type "E" Grease, No. 49-08-4122. Place Grease Near Intermediate Shaft Ball Bearing In Gear Case.

FIG.	NOTES
1	Torque to 18-28 In./Lbs.
20, 35, 39	Torque to 15-20 In./Lbs.
42	Torque to 30-50 In./Lbs.
44	Torque to 3-5 In./Lbs.
8	Place in motor housing before inserting armature.
24,29	Press flush to casting surface.
15	Seal towards armature.
36	Seal towards chuck.