



SERVICE PARTS LIST

BULLETIN NO.
54-06-0683

SPECIFY CATALOG NO. AND SERIAL NO. WHEN ORDERING PARTS		REVISED BULLETIN	DATE
3/8" T.S.C. REV. HOLE-SHOOTER		54-06-0682	May'93
CATALOG NO. 0230-1	STARTING SERIAL NO. 732-29500 or 732A	WIRING INSTRUCTION 58-01-0023	

EXAMPLE:
Component Parts (Small #)
Are Included When Ordering
The Assembly (Large #).

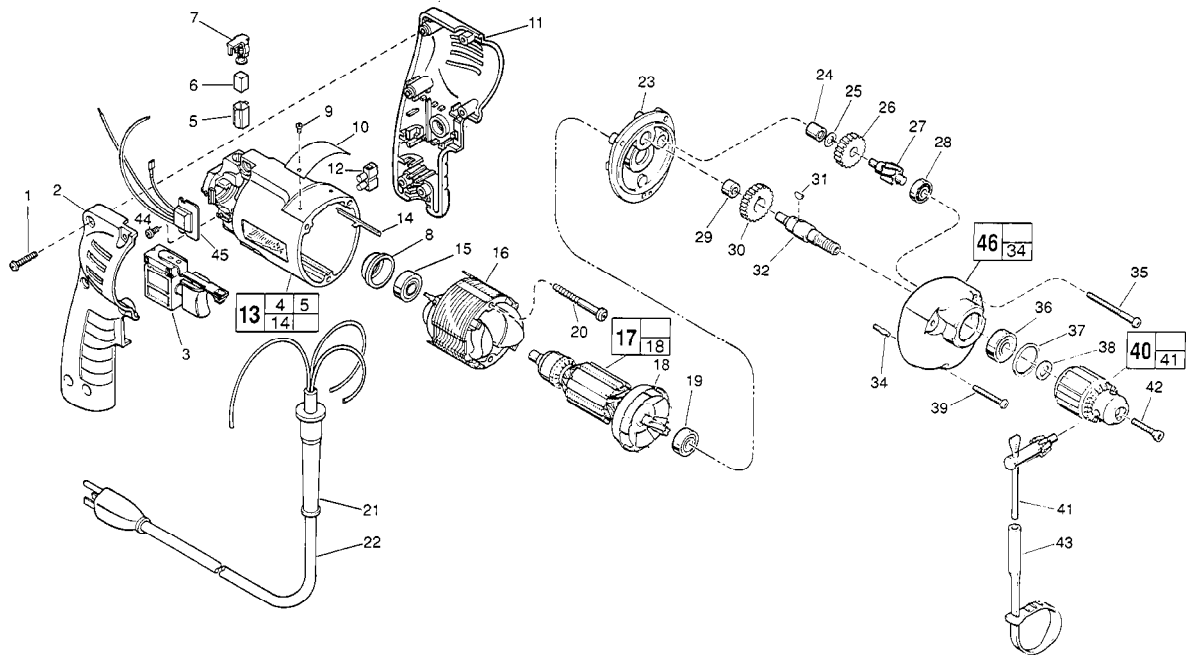


FIG. PART NO.	DESCRIPTION OF PART	NO. REQ.
1	06-82-7284 8-16 x 3/4" Pan Hd. Slit. Plast. T-20	(6)
★ 2	31-44-1745 Right Handle Half	(1)
★ 3	23-66-2145 Speed Control Switch	(1)
4	23-94-6225 Ground Wire Assembly (Not Shown)	(1)
★ 5	22-20-0830 Brush Tube	(2)
6	22-16-0275 Carbon Brush	(2)
7	23-52-1560 Brush Spring Assembly	(2)
8	22-72-0100 Bearing Cup	(1)
9	06-85-0200 Nameplate Screw	(2)
10	12-99-0850 Service Nameplate	(1)
★ 11	31-44-1740 Left Handle Half	(1)
12	22-56-0456 Terminal Block	(1)
★ 13	14-38-0600 Motor Housing Assembly	(1)
14	44-60-0530 Ground Pin	(1)
15	02-04-0645 Ball Bearing	(1)
16	18-11-0060 120 Volt Field	(1)
17	16-10-0470 120 Volt Armature	(1)
18	22-84-0760 Fan Assembly	(1)
19	02-04-0847 Ball Bearing	(1)
20	06-82-7393 7-18x 2" Pan Hd. Slit. Plast. T-20	(2)
21	44-76-0210 Cord Protector	(1)
★ 22	22-64-1120 Cord Set	(1)
23	28-28-1940 Diaphragm	(1)
24	02-50-1210 Needle Bearing	(1)
25	45-88-7301 Heat Treated Washer	(1)
26	32-40-1950 Intermediate Gear	(1)
27	36-66-4390 Intermediate Pinion Shaft	(1)
28	02-04-0640 Ball Bearing	(1)
29	02-50-1620 Needle Bearing	(1)
30	32-75-3240 Spindle Gear	(1)

FIG. PART NO.	DESCRIPTION OF PART	NO. REQ.
31	06-42-0800 Woodruff Key	(1)
32	38-50-5660 Reversing Spindle	(1)
34	06-65-0825 1/8 x 1/2" Groove Pin 5	(1)
35	06-82-7368 7-18x1-3/4" Pan Hd. Slit. Plast. T-20	(2)
36	02-04-1020 Ball Bearing	(1)
37	34-80-1400 Retaining Ring	(1)
38	45-88-7940 Chuck Washer	(1)
39	06-82-7308 7-18 x 1-1/8" Pan Hd. Slit. Plast. T-20	(1)
40	48-66-0795 3/8" Chuck	(1)
41	48-66-3240 Chuck Key	(1)
42	45-04-0750 Chuck Screw - L.H. Thread	(1)
43	48-66-4040 Key Holder	(1)
44	06-82-7212 4-20x1/4" Pan Hd. Slit. Plast. T-10	(1)
★ 45	14-20-0650 Remote Electronic Assembly	(1)
46	14-30-0620 Gear Case Assembly	(1)

FIG. LUBRICATION

46 1-1/2 Oz. Type "E" Grease, No. 49-08-4122. Place Grease Near Intermediate Shaft Ball Bearing In Gear Case.

FIG. NOTES

- 1 Torque to 18-22 In./Lbs.
- 20, 35, 39 Torque to 15-20 In./Lbs.
- 42 Torque to 30-35 In./Lbs.
- 44 Torque to 3-5 In./Lbs.
- 8 Place in motor housing before inserting armature.
- 24, 29 Press flush to casting surface.
- 15, 19 Seal towards armature.
- 36 Seal towards chuck.

MILWAUKEE ELECTRIC TOOL CORPORATION
13135 W. LISBON RD., BROOKFIELD, WI 53005