



SERVICE PARTS LIST

BULLETIN NO.
54-06-0851

SPECIFY CATALOG NO. AND SERIAL NO. WHEN ORDERING PARTS		REVISED BULLETIN 54-06-0850	DATE Apr. '88
1/2" KEYLESS CHUCK MAGNUM DRILL		WIRING INSTRUCTION 58-01-0072	
CATALOG NO. 0235-1	STARTING SERIAL NO. 755-2251		

EXAMPLE:
Component Parts (Small #)
Are Included When Ordering
The Assembly (Large #).

00 0

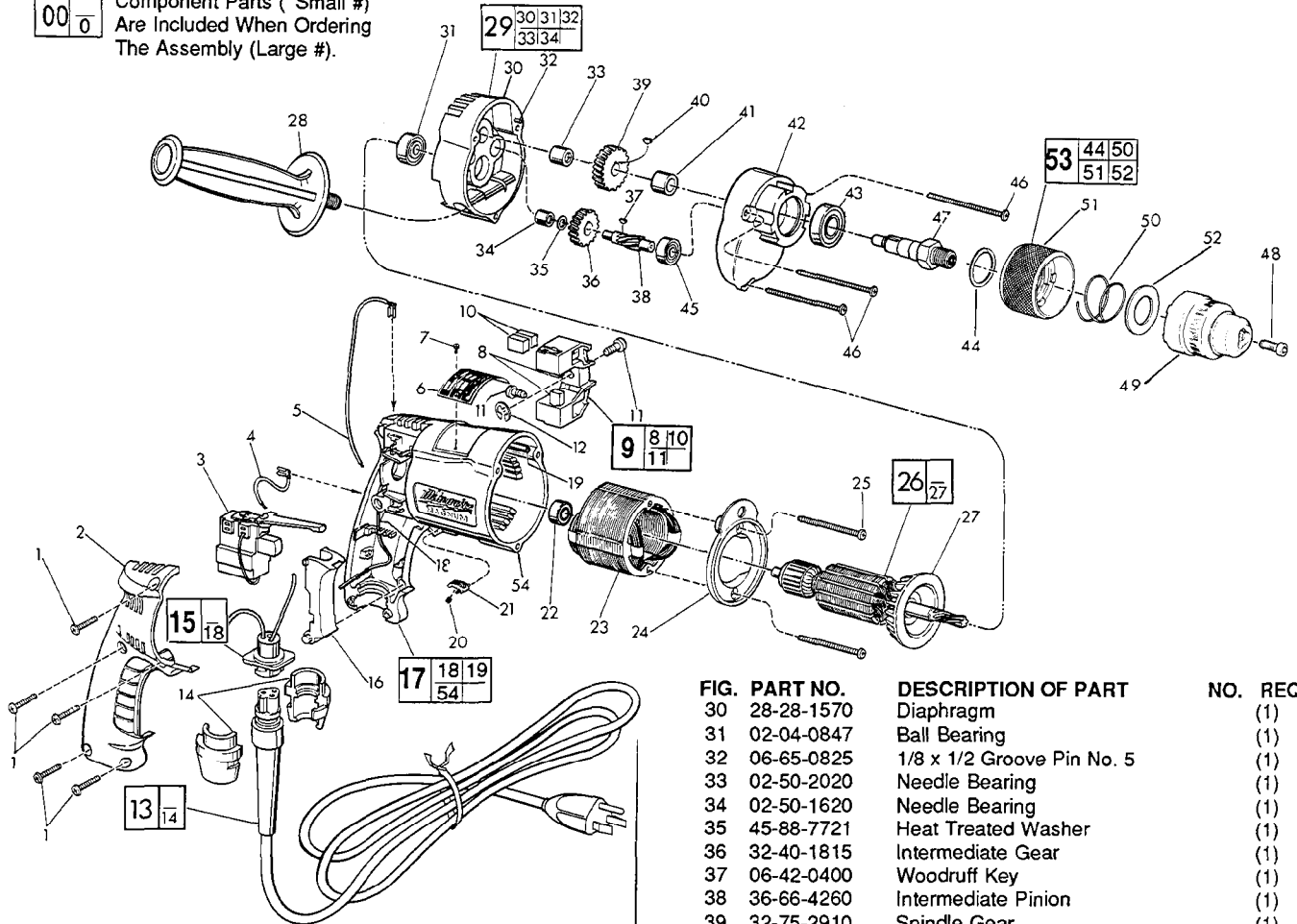


FIG.	PART NO.	DESCRIPTION OF PART	NO. REQ.
1	06-95-0185	7-18x11/16" Pan Hd. Plastite Screw	(5)
2	31-15-0101	Handle Cover	(1)
3	23-66-1350	Trigger Speed Control Switch	(1)
4	23-94-9635	2-1/4" Lead Assembly	(1)
5	23-94-9640	7" Lead Assembly	(1)
6	12-99-0071	Nameplate Blank	(1)
7	06-85-0200	Nameplate Screw	(2)
8	22-16-0275	Carbon Brush	(2)
9	22-22-0350	Brush Holder Assembly	(1)
10	22-16-0275	Carbon Brush (Spares)	(2)
11	31-75-0011	Brush Holder Screw	(2)
12	34-60-0500	1/4" Ext. Retaining Ring	(1)
*13	48-76-4008	Cord Set	(1)
14	44-40-0440	Cord Nut	(2)
15	22-56-0302	Pin Housing Assembly	(1)
16	45-72-0080	Trigger	(1)
17	14-38-0355	Motor Housing Assembly	(1)
18	23-94-9686	Ground Wire Assembly	(1)
19	44-60-0570	Grounding Pin	(1)
20	40-50-0085	Lock Button Spring	(1)
21	42-42-0150	Lock Button	(1)
22	02-04-0645	Ball Bearing	(1)
23	18-10-0045	120 Volt Field	(1)
24	31-05-0065	Baffle	(1)
25	06-95-0140	7-18x1-7/8" Pan Hd. Screw	(2)
26	16-10-0500	120 Volt Armature Assembly	(1)
27	22-84-0650	Fan	(1)
28	43-62-0885	Side Handle	(1)
29	14-13-0350	Diaphragm Assembly	(1)

FIG.	PART NO.	DESCRIPTION OF PART	NO. REQ.
	30	28-28-1570 Diaphragm	(1)
	31	02-04-0847 Ball Bearing	(1)
	32	06-65-0825 1/8 x 1/2 Groove Pin No. 5	(1)
	33	02-50-2020 Needle Bearing	(1)
	34	02-50-1620 Needle Bearing	(1)
	35	45-88-7721 Heat Treated Washer	(1)
	36	32-40-1815 Intermediate Gear	(1)
	37	06-42-0400 Woodruff Key	(1)
	38	36-66-4260 Intermediate Pinion	(1)
	39	32-75-2910 Spindle Gear	(1)
	40	06-42-1200 Woodruff Key	(1)
	41	45-36-1100 Spacer	(1)
	42	28-14-1990 Gear Case	(1)
	43	02-04-1230 Ball Bearing	(1)
*	44	34-80-2300 Retaining Ring	(1)
	45	02-04-0640 Ball Bearing	(1)
	46	06-95-0150 7-18x2-3/16" Pan Hd. Screw	(3)
	47	38-50-5250 Spindle - Double Reduction	(1)
	48	06-75-3150 1/4-20x1" L.H. Thread Skt. Hd. Screw	(1)
	49	48-66-1490 Keyless Chuck	(1)
*	50	40-50-8125 Spring Conical	(1)
*	51	42-76-0500 Collar Assembly	(1)
*	52	45-88-1125 Nylon Washer	(1)
*	53	14-46-1560 Collar Service Kit	(1)
	54	31-50-0300 Motor Housing	(1)
		10-98-5986 Warning Label	(1)
		10-98-6465 Bi-Lingual Label	(1)

FIG. LUBRICATION

42 1.5 Oz. Type "E" Grease, 49-08-4121. Place Grease Near Intermediate Shaft Ball Bearing In Gear Case.

42/51 Apply A Thin Coat Of "E" Grease To The Three Lugs Of Gear Case And Collar Assembly.

FIG. NOTES

47 Apply Blue Loctite To Internal Threads Prior to Chuck Assy.
49 Ratchet Chuck (15-20 In./Lbs. Collar Load) To Secure Chuck To Spindle.

MILWAUKEE ELECTRIC TOOL CORPORATION
13135 W. LISBON RD., BROOKFIELD, WI 53005