



SERVICE PARTS LIST

BULLETIN NO.
54-06-0690

SPECIFY CATALOG NO. AND SERIAL NO. WHEN ORDERING PARTS		REVISED BULLETIN	DATE
1/2" T.S.C. REV. HOLE-SHOOTER			May '99
CATALOG NO.	0238-1	WIRING INSTRUCTION	
STARTING SERIAL NO.	723-1001	58-01-0015	

EXAMPLE:
Component Parts (Small #)
Are Included When Ordering
The Assembly (Large #).

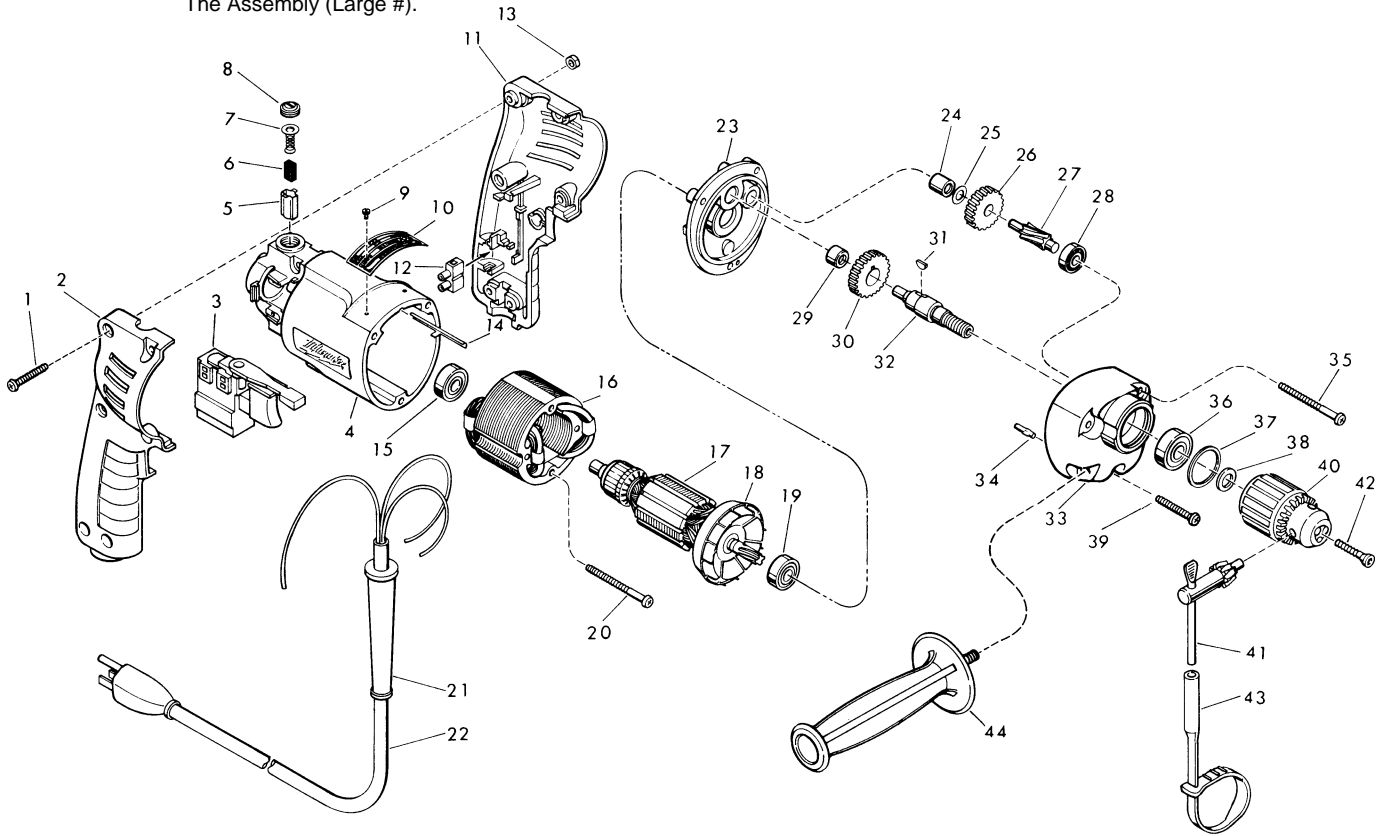


FIG.	PART NO.	DESCRIPTION OF PART	NO. REQ.
1	06-81-0473	8-32 x 1" Pan Hd. Pozi Dr. Screw	(6)
2	31-44-1130	Right Handle Half	(1)
3	23-66-1245	Speed Control Switch	(1)
4	31-50-0345	Motor Housing	(1)
5	22-20-0530	Brush Tube	(2)
6	22-16-0275	Carbon Brush	(2)
7	23-52-0210	Brush Spring Assembly	(2)
8	23-44-0120	Brush Retaining Screw	(2)
9	06-85-0200	Nameplate Screw	(2)
10	12-99-0420	Nameplate Blank	(1)
11	31-44-1140	Left Handle Half	(1)
12	22-56-0455	Terminal Block	(1)
13	06-55-0835	8-32 Hex Nut	(6)
14	44-60-0530	Ground Pin	(1)
15	02-04-0645	Ball Bearing	(1)
16	18-10-0060	Field	(1)
17	16-10-0470	Armature (Includes Fig. No. 18)	(1)
18	22-84-0760	Fan Assembly	(1)
19	02-04-0851	Ball Bearing	(1)
20	06-95-0145	7-18 x 1-3/4" Pan Hd. Pozi Dr. Screw	(2)
21	44-76-0130	Cord Protector	(1)
22	22-64-1120	Cord Set	(1)
23	28-28-1770	Diaphragm	(1)
24	02-50-1210	Needle Bearing	(1)
25	45-88-7301	Heat Treated Washer	(1)
26	32-40-1950	Intermediate Gear	(1)
27	36-66-4370	Intermediate Pinion Shaft	(1)
28	02-04-0640	Ball Bearing	(1)
29	02-50-1620	Needle Bearing	(1)
30	32-75-3220	Spindle Gear	(1)
31	06-42-0800	Woodruff Key	(1)
32	38-50-5650	Reversing Spindle	(1)
33	28-14-1810	Gear Case	(1)
34	06-65-0825	1/8 x 1/2" Groove Pin 5	(1)

FIG.	PART NO.	DESCRIPTION OF PART	NO. REQ.
35	06-95-0145	7-18 x 1-3/4" Pan Hd. Pozi Dr. Screw	(2)
36	02-04-1230	Ball Bearing	(1)
37	34-80-2300	Retaining Ring	(1)
38	45-88-0375	Chuck Washer	(1)
39	06-95-0137	7-18 x 1-1/8" Pan Hd. Pozi Dr. Screw	(1)
40	48-66-1360	1/2 Chuck (Includes Fig. No. 41)	(1)
41	48-66-3280	Chuck Key	(1)
42	06-75-3150	Chuck Screw - L.H. Thread	(1)
43	48-66-4040	Key Holder	(1)
44	43-62-0905	Side Handle	(1)

FIG. LUBRICATION
33 1-1/2 Oz. Type "E" Grease, No. 49-08-4122. Place Grease Near Intermediate Shaft Ball Bearing In Gear Case.

FIG.	NOTES
1	Torque to 14-18 In./Lbs.
20, 35, 39	Torque to 15-20 In./Lbs.
42	Torque to 30-35 In./Lbs.
24,29	Press flush to casting surface.
29	Press only on end with manufacturer ID.
15	Seal towards armature.
36	Seal towards retaining ring.

MILWAUKEE ELECTRIC TOOL CORPORATION
13135 W. LISBON RD., BROOKFIELD, WI 53005