



SERVICE PARTS LIST

BULLETIN NO.
54-06-0695

SPECIFY CATALOG NO. AND SERIAL NO. WHEN ORDERING PARTS				REVISED BULLETIN	DATE
1/2" T.S.C. REV. HOLE-SHOOTER				54-06-0694	May '99
CATALOG NO.	0238-1	STARTING SERIAL NO.	723B	WIRING INSTRUCTION 58-01-0029	

EXAMPLE:
Component Parts (Small #)
Are Included When Ordering
The Assembly (Large #).

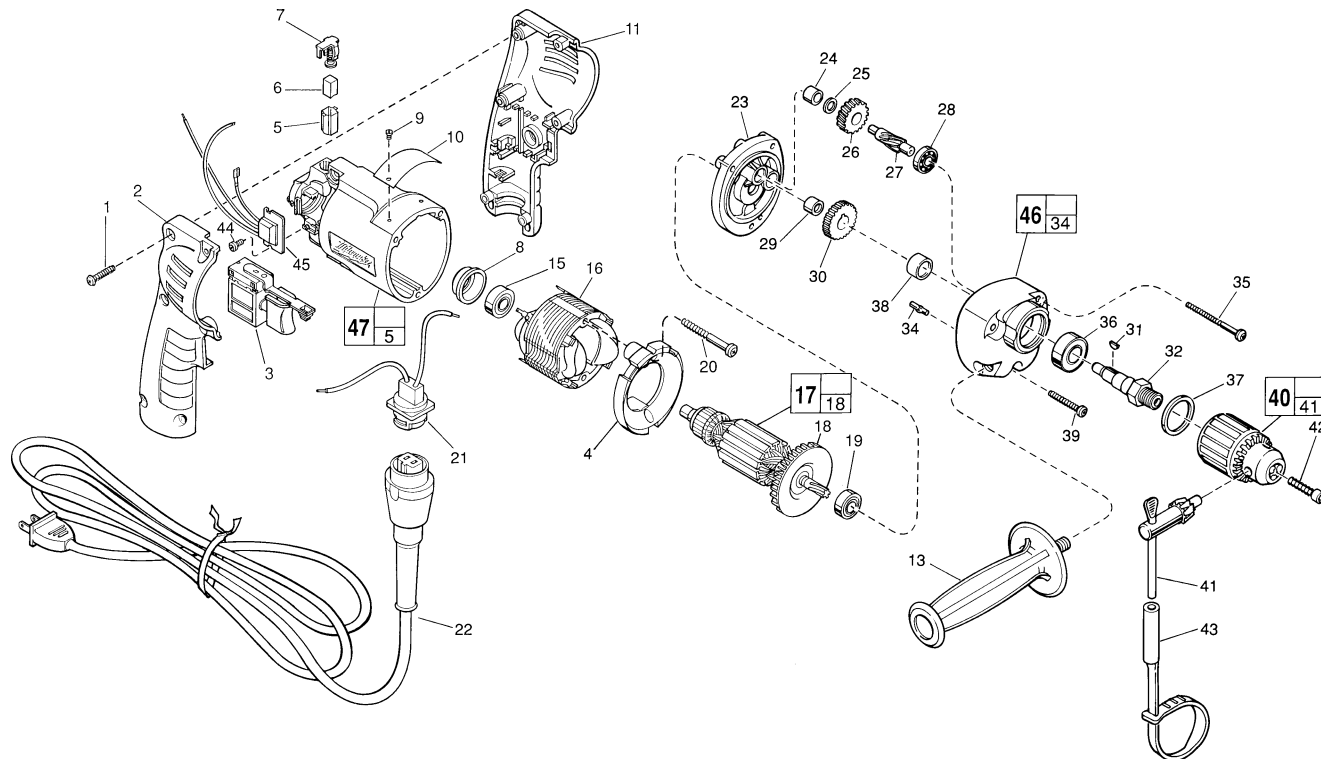


FIG.	PART NO.	DESCRIPTION OF PART	NO. REQ.
	1	06-82-7284 8-16 x 3/4" Pan Hd. Slit. Plast. T-20	(6)
★	2	31-44-1845 Right Handle Half	(1)
	3	23-66-2145 Speed Control Switch	(1)
★	4	42-14-0380 Baffle	(1)
	5	22-20-0830 Brush Tube	(2)
	6	22-16-0275 Carbon Brush	(2)
	7	23-52-1560 Brush Spring Assembly	(2)
	8	22-72-0100 Bearing Cup	(1)
	9	06-85-0200 Nameplate Screw	(2)
★	10	12-99-0860 Service Nameplate	(1)
★	11	31-44-1840 Left Handle Half	(1)
	13	43-62-0905 Side Handle	(1)
	15	02-04-0645 Ball Bearing	(1)
	16	18-11-0150 Field	(1)
★	17	16-10-0680 Armature	(1)
★	18	22-84-0880 Fan Assembly	(1)
	19	02-04-0851 Ball Bearing	(1)
★	20	06-82-7203 7-18 x 2-1/8" Pan Hd. Slit. Plast. T-20	(2)
★	21	22-56-0665 Blade Housing Assembly	(1)
★	22	48-76-5010 Cord Set	(1)
	23	28-28-1970 Diaphragm	(1)
	24	02-50-1210 Needle Bearing	(1)
	25	45-88-7301 Heat Treated Washer	(1)
	26	32-40-2010 Intermediate Gear	(1)
	27	36-66-4500 Intermediate Pinion Shaft	(1)
	28	02-04-0640 Ball Bearing	(1)
	29	02-50-1611 Needle Bearing	(1)
	30	32-75-3320 Spindle Gear	(1)
	31	06-42-1200 Woodruff Key	(1)
	32	38-50-5740 Reversing Spindle	(1)
	34	06-65-0825 1/8 x 1/2" Groove Pin 5	(1)
	35	06-82-7440 7-18 x 2-1/2" Pan Hd. Slit. Plast. T-20	(2)
	36	02-04-1229 Ball Bearing	(1)

FIG.	PART NO.	DESCRIPTION OF PART	NO. REQ.
	37	34-80-2300 Retaining Ring	(1)
	38	45-36-1100 Spindle Spacer	(1)
	39	06-82-7344 7-18 x 1-1/2" Pan Hd. Slit. Plast. T-20	(1)
	40	48-66-1360 1/2 Chuck	(1)
	41	48-66-3280 Chuck Key	(1)
	42	06-75-3150 Chuck Screw - L.H. Thread	(1)
	43	48-66-4040 Key Holder	(1)
	44	06-82-7212 4-20 x 1/4" Pan Hd. Slit. Plastite T-10	(1)
	45	14-20-0650 Remote Electronic Assembly	(1)
	46	14-30-0521 Gear Case Assembly	(1)
★	47	14-38-0590 Motor Housing Assembly	(1)

FIG. LUBRICATION
46 1-1/2 Oz. Type "E" Grease, No. 49-08-4122. Place Grease Near Intermediate Shaft Ball Bearing In Gear Case.

FIG.	NOTES
1	Torque to 18-28 In./Lbs.
20, 35, 39	Torque to 15-20 In./Lbs.
42	Torque to 40-45 In./Lbs.
44	Torque to 3-5 In./Lbs.
8	Place in motor housing before inserting armature.
24, 29	Press flush to casting surface.
29	Press only on end with manufacturer ID.
15	Seal towards armature.
36	Seal towards retaining ring.

MILWAUKEE ELECTRIC TOOL CORPORATION
13135 W. LISBON RD., BROOKFIELD, WI 53005