



# SERVICE PARTS LIST

**BULLETIN NO.**  
**54-06-0452**

SPECIFY CATALOG NO. AND SERIAL NO. WHEN ORDERING PARTS		REVISED BULLETIN	DATE
<b>D.I. 1/2" ANGLE DRILL</b>		54-06-0451	July 2001
<b>CATALOG NO.</b>	<b>0379-1</b>	<b>WIRING INSTRUCTION</b>	
<b>STARTING SERIAL NO.</b>	<b>761B</b>	<b>58-01-0373</b>	

**EXAMPLE:**  
Component Parts (Small #)  
Are Included When Ordering  
The Assembly (Large #).

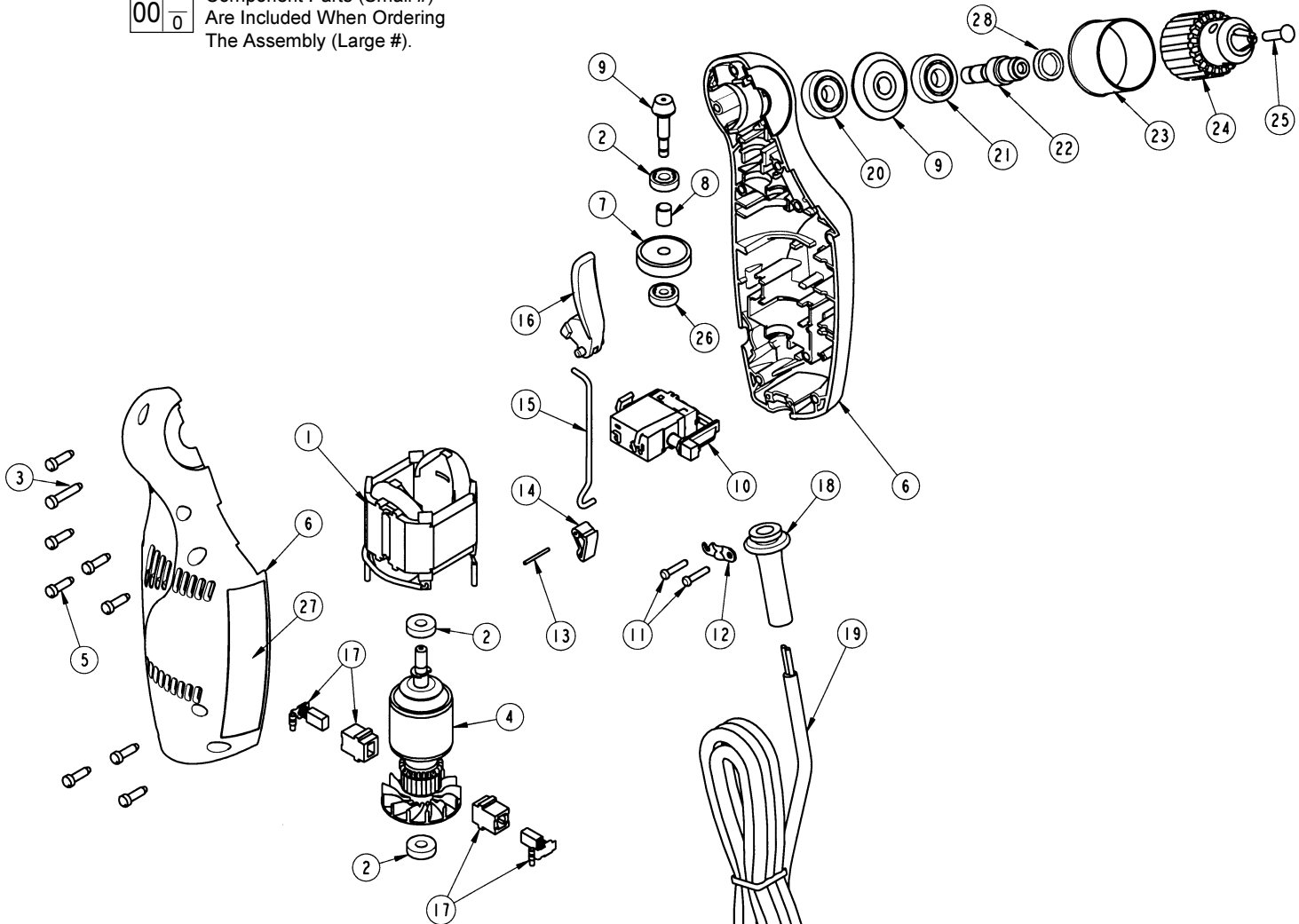


FIG.	PART NO.	DESCRIPTION OF PART	NO. REQ.
★ 1	18-10-0115	Field	(1)
★ 2	02-04-0300	Ball Bearing	(3)
★ 3	05-74-0025	8-16 x .750 Fillister Hd. Screw	(8)
★ 4	16-10-0650	Armature	(1)
★ 5	05-74-0500	8-16 x .562 Fillister Hd. Screw	(1)
★ 6	31-50-0461	Housing Assembly	(1)
★ 7	32-42-1155	Helical Gear	(1)
★ 8	45-36-1233	Spacer	(1)
★ 9	32-60-2395	Gear & Pinion Assembly	(1)
★ 10	23-66-1377	Switch	(1)
★ 11	06-95-0055	Pan Head Plastite Screw	(2)
12	42-68-0530	Strain Relief Clamp	(1)
13	06-65-0550	Pin	(1)
14	36-17-0070	Bell Crank	(1)
★ 15	44-94-0295	Switch Rod	(1)
★ 16	45-72-0135	Trigger	(1)
★ 17	22-22-1345	Brush & Holder Assembly	(2)
18	44-76-0160	Cord Protector	(1)
19	22-64-0830	Cord Set	(1)
20	02-04-0911	Ball Bearing	(1)
21	02-04-1000	Ball Bearing	(1)
★ 22	38-50-5525	Output Shaft	(1)
★ 23	43-54-0526	Chuck Shroud	(1)
★ 24	48-66-2120	1/2" Chuck	(1)

FIG.	PART NO.	DESCRIPTION OF PART	NO. REQ.
★ 25	05-74-0513	M5 x .8 x 25 L.H. Chuck Screw	(1)
★ 26	02-04-0450	Ball Bearing	(1)
★ 27	12-20-0322	Service Nameplate Kit	(1)
★ 28	45-36-1234	Chuck Spacer	(1)
	48-66-3480	Chuck Key	(1)

**FIG. LUBRICATION:**  
★ 6 Place .80 oz. (22 gm) of Type "Z" Grease, No. 49-08-7655, in the gear cavities of the housing assembly.

**MILWAUKEE ELECTRIC TOOL CORPORATION**  
13135 W. LISBON RD., BROOKFIELD, WI 53005