



# SERVICE PARTS LIST

**BULLETIN NO.**  
**55-06-1051**

SPECIFY CATALOG NO. AND SERIAL NO. WHEN ORDERING PARTS		REVISED BULLETIN	DATE
12 VOLT 3/8" CORDLESS DRILL		55-06-1050	May '96
CATALOG NO. 0436-4	STARTING SERIAL NO. 848B	WIRING INSTRUCTION 58-01-1605	

**EXAMPLE:**  

00	0
----	---

 Component Parts (Small #) Are Included  
 When Ordering The Assembly (Large #).

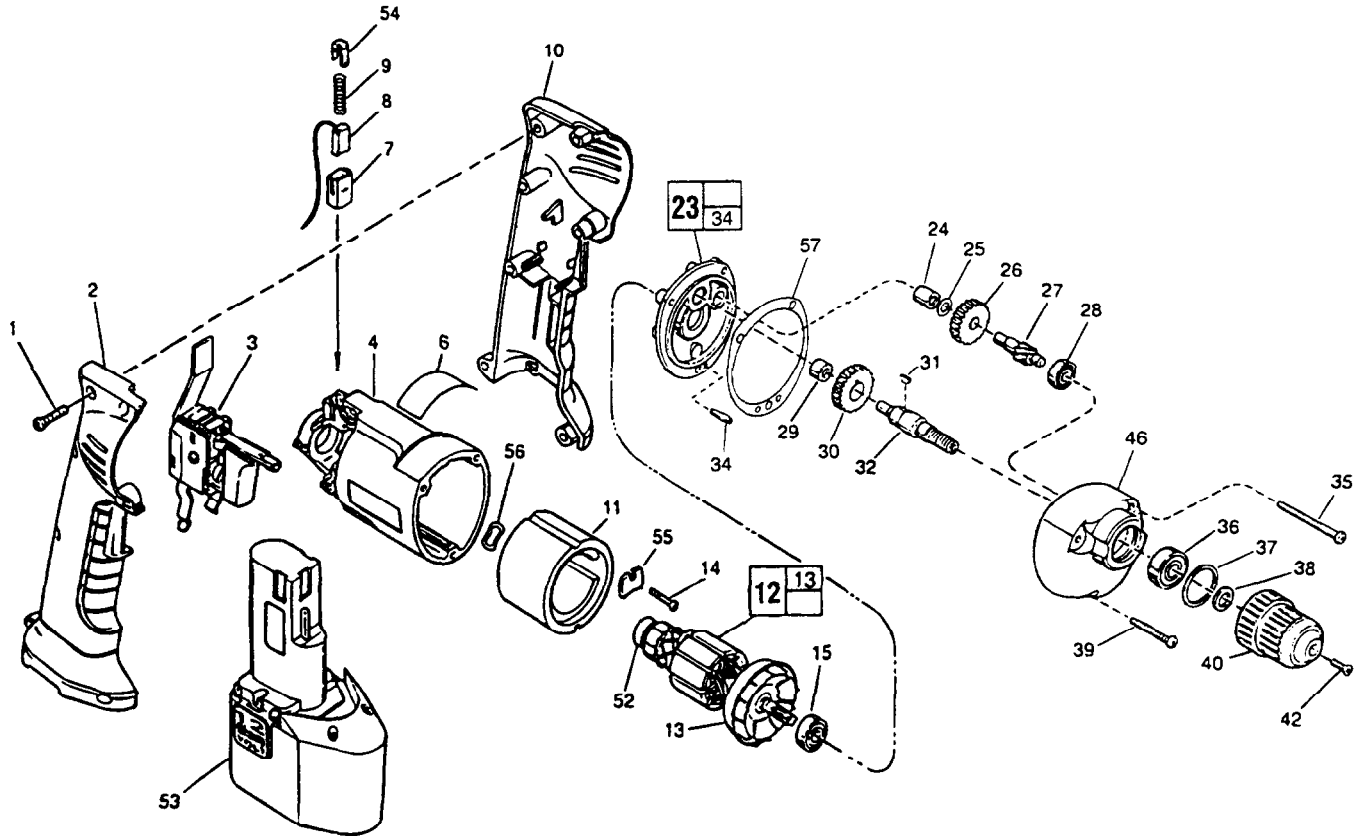


FIG.	PART NO.	DESCRIPTION OF PART	NO. REQ.
	1	06-82-9207 6-32 x 11/16" Pan Hd. Slit. Plast. T-20	(7)
	2	31-44-1885 Right Handle Half	(1)
	3	23-66-2300 Speed Control Switch	(1)
	4	31-50-1080 Motor Housing	(1)
	6	12-20-1230 Service Nameplate Kit	(1)
	7	22-20-0860 Brush Tube	(2)
	8	22-18-0840 Brush Assembly - Top	(1)
		22-18-0845 Brush Assembly - Bottom	(1)
	9	40-50-8775 Brush Spring	(2)
	10	31-44-1880 Left Handle Half	(1)
	11	18-01-0010 Field	(1)
	12	16-01-0020 Armature	(1)
	13	22-84-0760 Fan Assembly	(1)
	14	06-82-7261 6-19 x 11/16" Pan Hd. Slit. Plast. T-20	(1)
	15	02-04-0847 Ball Bearing	(1)
★	23	14-13-0530 Diaphragm Assembly	(1)
	24	02-50-1210 Needle Bearing	(1)
	25	45-88-7301 Heat Treated Washer	(1)
	26	32-40-2280 Intermediate Gear	(1)
	27	36-66-4615 Intermediate Pinion Shaft	(1)
	28	02-04-0640 Ball Bearing	(1)
	29	02-50-1620 Needle Bearing	(1)
	30	32-75-3450 Spindle Gear	(1)
	31	06-42-0800 Woodruff Key	(1)
	32	38-50-5660 Reversing Spindle	(1)
★	34	06-65-0880 Ground Pin	(1)
	35	06-82-7368 7-18 x 1-3/4" Pan Hd. Slit. Plast. T-20	(2)
	36	02-04-1020 Ball Bearing	(1)
	37	34-80-1400 Retaining Ring	(1)
	38	45-88-7940 Chuck Washer	(1)
	39	06-82-7308 7-18 x 1-1/8" Pan Hd. Slit. Plast. T-20	(1)
	40	48-66-0390 3/8" Chuck	(1)
	42	45-04-0750 Chuck Screw - L.H. Thread	(1)
★	46	28-14-1825 Gear Case	(1)
	52	02-04-5130 Ball Bearing	(1)
	53	----- 12 Volt Battery - Select From Catalog	(1)
	54	22-32-0400 Brush Spring Clip	(2)
	55	44-66-6140 Mounting Plate	(1)
	56	45-88-5615 Wavy Spring Washer	(1)
★	57	43-44-0925 Gasket	(1)
		10-15-9490 Logo Label	(1)

FIG.	LUBRICATION
46	1/2 Oz. Type "E" Grease, No. 49-08-4122. Place near intermediate shaft ball bearing in gear case.

FIG.	NOTES
4,7,8	Slot on brush tube must be assembled on the same side as slot on motor housing. Brush assemblies must be inserted with the wire laying inside of brush tube slot. Brush must slide freely inside brush tube.
7,54	Brush spring clip must snap into detent of brush tube.
11	Press chamfer end first.
15	Seal towards armature.
24,29	Press flush to casting surface.
35,39	Torque to 15-20 in./Lbs.
36	Seal towards chuck.

**MILWAUKEE ELECTRIC TOOL CORPORATION**  
 13135 W. LISBON RD., BROOKFIELD, WI 53005