



SERVICE PARTS LIST

BULLETIN NO.
55-05-0121

SPECIFY CATALOG NO. AND SERIAL NO. WHEN ORDERING PARTS		REVISED BULLETIN	DATE
REVERSIBLE HEAVY-DUTY DRAIN CLEANER		55-05-0120	Nov. '94
CATALOG NO. 0566-4	STARTING SERIAL NO. 496B	WIRING INSTRUCTION 58-03-0980	

00
0

EXAMPLE:
Component Parts (Small #) Are Included When Ordering The Assembly (Large #).

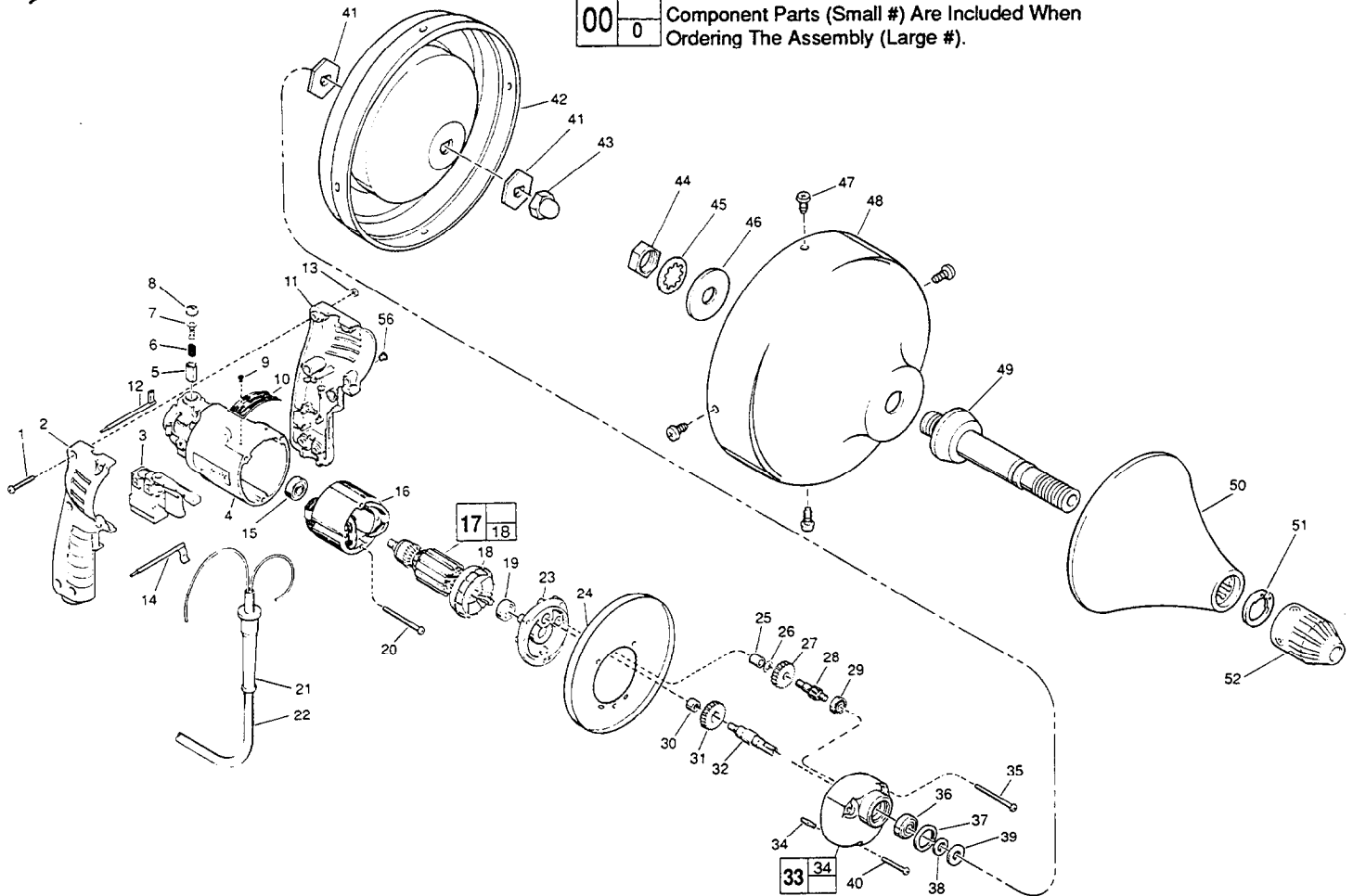


FIG.	PART NO.	DESCRIPTION OF PART	NO.REQ.
	1	06-82-2361 8-32 x 15/16" Pan Hd. Slit. T-20	(6)
	2	31-44-1130 Right Handle Half	(1)
	3	23-66-1760 Speed Control Switch	(1)
	4	31-50-0346 Motor Housing	(1)
	5	22-20-0790 Brush Tube	(2)
	6	22-16-0275 Carbon Brush	(2)
	7	23-52-0210 Brush Spring Assembly	(2)
	8	23-44-0120 Brush Retaining Screw	(2)
★	9	06-72-1720 Nameplate Rivet	(2)
	10	12-99-0570 Nameplate Blank	(1)
	11	31-44-1140 Left Handle Half	(1)
	12	23-94-9020 Lead Assembly	(1)
	13	06-55-0835 8-32 Hex Nut	(6)
	14	23-94-9030 Lead Assembly	(1)
	15	02-04-0645 Ball Bearing	(1)
	16	18-14-0070 220 V. Field	(1)
	17	16-14-0571 220 V. Armature	(1)
	18	22-84-0760 Fan Assembly	(1)
	19	02-04-0847 Ball Bearing	(1)
	20	06-82-7368 7-18 x 1-3/4" Pan Hd. Slit. Plast. T-20	(2)
	21	44-76-0210 Cord Protector	(1)
	22	22-64-4480 Cord Set	(1)
	23	28-28-1770 Diaphragm	(1)
	24	45-12-0216 Shield	(1)
	25	02-50-1210 Needle Bearing	(1)
	26	45-88-7301 Heat Treated Washer	(1)
	27	32-40-1950 Intermediate Gear	(1)
	28	36-66-4370 Intermediate Shaft	(1)
	29	02-04-0640 Ball Bearing	(1)
	30	02-50-1620 Needle Bearing	(1)

FIG.	PART NO.	DESCRIPTION OF PART	NO.REQ.
	31	32-75-3220 Spindle Gear	(1)
	32	38-50-5710 Reversing Spindle	(1)
★	33	14-30-0620 Gear Case Assembly	(1)
	34	06-65-0825 1/8 x 1/2" Groove Pin	(1)
★	35	06-82-7380 7-18 x 1-7/8" Pan Hd. Slit. Plast. T-20	(2)
	36	02-04-1020 Ball Bearing	(1)
	37	34-80-1400 Retaining Ring	(1)
	38	45-88-0080 Spindle Washer	(1)
	39	45-88-0605 Flat Washer	(1)
★	40	06-82-7320 7-18 x 1-1/4" Pan Hd. Slit. Plast. T-20	(1)
	41	45-88-8005 "D" Hole Hex Washer	(2)
	42	43-11-0070 Upper Drum Section	(1)
	43	44-40-0625 Low Crown Nut	(1)
	44	06-55-3760 Special Hex Nut	(1)
	45	06-97-3010 Internal Lock Washer	(1)
	46	45-88-7175 Washer	(1)
★	47	06-82-8845 8-32 x 3/8" Pan Hd. Mach. T-20	(4)
	48	43-11-0060 Lower Drum Section	(1)
	49	38-50-5055 Spindle Assembly	(1)
	50	43-54-0320 Hand Guard Assembly	(1)
	51	34-60-1312 Retaining Ring	(1)
	52	48-66-0270 Chuck	(1)
	56	31-53-0110 Handle Plug	(1)

FIG. LUBRICATION

33 1-1/4 oz. Type "E" Grease, No. 49-08-4122.

MILWAUKEE ELECTRIC TOOL CORPORATION
13135 W. LISBON RD., BROOKFIELD, WI 53005