



SERVICE PARTS LIST

BULLETIN NO.
54-40-7021

| | | | |
|--|--|---|-------------------|
| SPECIFY CATALOG NO. AND SERIAL NO. WHEN ORDERING PARTS | | REVISED BULLETIN 54-40-7020 | DATE Mar. 2011 |
| CORDLESS CIRCULAR SAW | | | |
| CATALOG NO. 0730-20 | STARTING SERIAL NO. A57B & A57C | WIRING INSTRUCTION SEE REVERSE SIDE | |

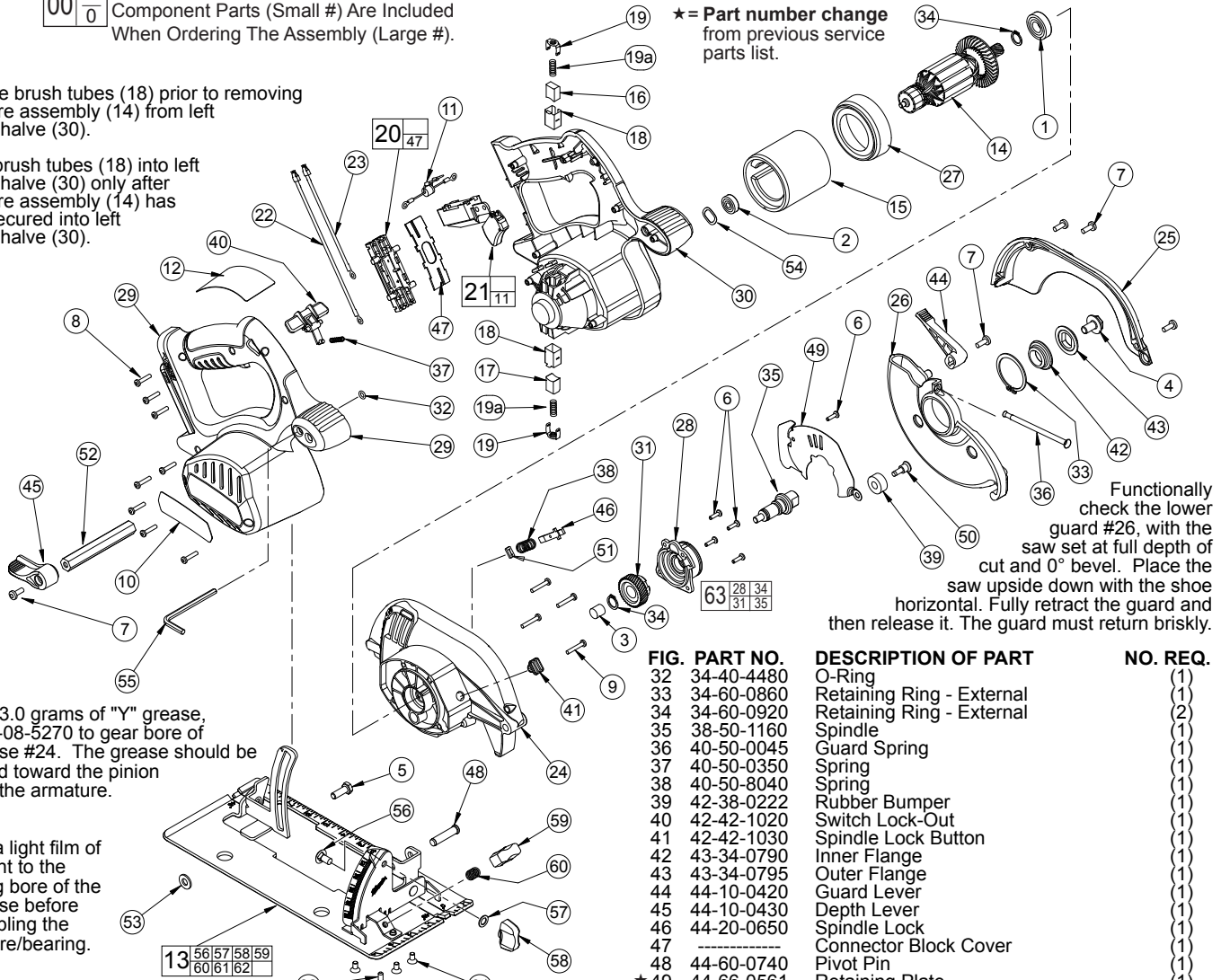
EXAMPLE:
00 | 0
Component Parts (Small #) Are Included
When Ordering The Assembly (Large #).

NOTE:
Remove brush tubes (18) prior to removing
armature assembly (14) from left
handle half (30).

Install brush tubes (18) into left
handle half (30) only after
armature assembly (14) has
been secured into left
handle half (30).

Apply 3.0 grams of "Y" grease,
No. 49-08-5270 to gear bore of
gearcase #24. The grease should be
directed toward the pinion
end of the armature.

Apply a light film of
lubricant to the
bearing bore of the
gearcase before
assembling the
armature/bearing.



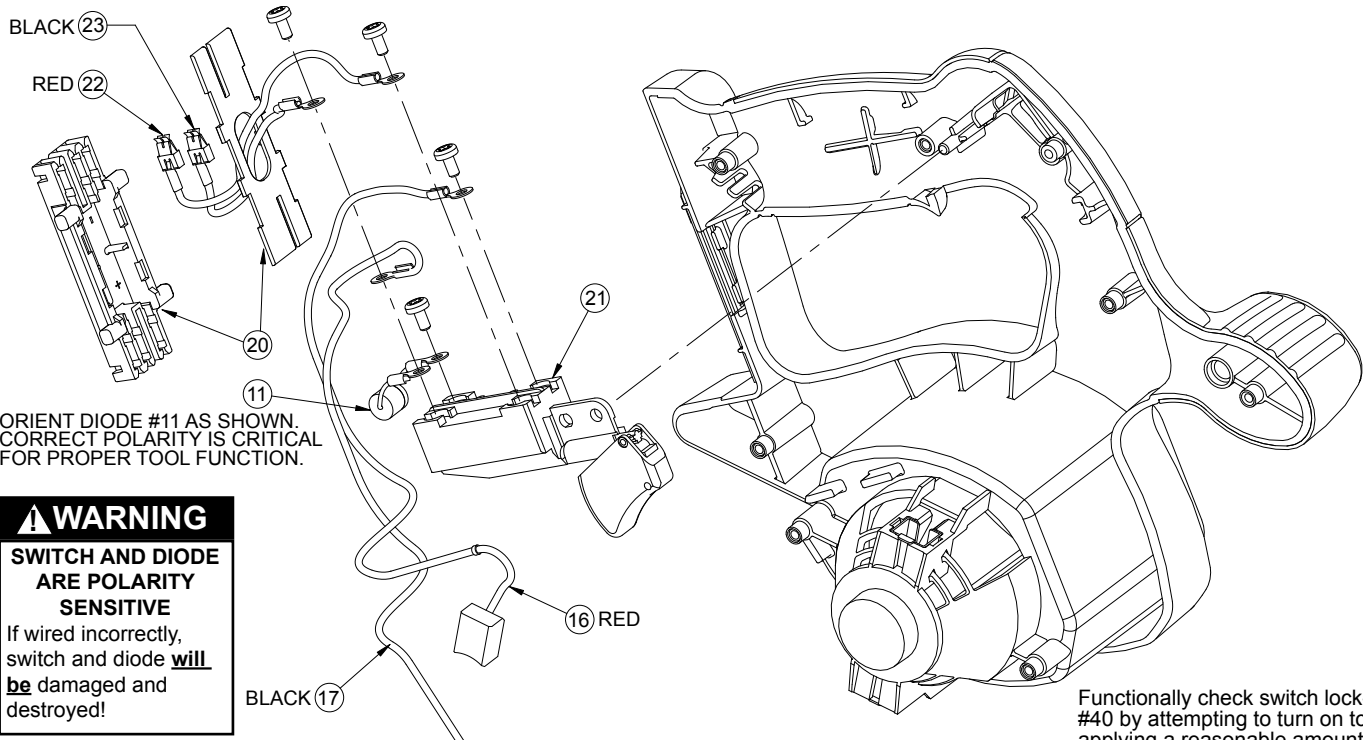
★ = Part number change
from previous service
parts list.

Functionally
check the lower
guard #26, with the
saw set at full depth of
cut and 0° bevel. Place the
saw upside down with the shoe
horizontal. Fully retract the guard and
then release it. The guard must return briskly.

| FIG. | PART NO. | DESCRIPTION OF PART | NO. REQ. |
|------|------------|---------------------------------------|----------|
| 1 | 02-04-1212 | Ball Bearing | (1) |
| 2 | 02-04-5130 | Ball Bearing | (1) |
| 3 | 02-50-1640 | Needle Bearing | (1) |
| 4 | 06-75-1010 | Left Hand Screw | (1) |
| 5 | 06-75-5860 | 1/4-20 x 3/4 Screw | (1) |
| 6 | 06-82-5285 | 6-32 x .5 Pan Hd. Taptite Screw T-15 | (5) |
| 7 | 06-82-5314 | 10-24 x .5 Pan Hd. Taptite Screw T-25 | (5) |
| 8 | 06-82-7470 | 6-19 x .687 Plastite Torx Screw T-15 | (8) |
| 9 | 06-82-7475 | 6-19 x .875 Plastite Torx Screw T-15 | (4) |
| 10 | 10-20-2840 | Logo Label | (1) |
| 11 | 22-74-0510 | Diode Assembly | (1) |
| 12 | 12-20-3340 | Service Nameplate | (1) |
| 13 | 14-74-0310 | Shoe Assembly | (1) |
| 14 | 16-01-2125 | Armature | (1) |
| 15 | 18-01-2000 | Field | (1) |
| 16 | 22-18-1240 | Brush Assembly - Red | (1) |
| 17 | 22-18-1245 | Brush Assembly - Black | (1) |
| 18 | 22-20-0425 | Brush Tube | (2) |
| 19 | 22-32-0420 | Brush Spring Clip | (2) |
| 19a | 40-50-8745 | Brush Spring | (2) |
| 20 | 22-56-0975 | Connector Block Assembly | (1) |
| 21 | 23-66-1005 | Service Switch | (1) |
| 22 | 23-94-4290 | Leadwire Assembly - Red | (1) |
| 23 | 23-94-4295 | Leadwire Assembly - Black | (1) |
| ★ 24 | 28-14-0747 | Gearcase | (1) |
| ★ 25 | 28-20-1160 | Upper Guard Cover | (1) |
| ★ 26 | 28-41-0956 | Lower Guard | (1) |
| 27 | 31-05-0350 | Baffle | (1) |
| 28 | 31-15-0601 | Gearcase Cover | (1) |
| 29 | 31-44-2040 | Right Handle Halve | (1) |
| 30 | 31-44-2045 | Left Handle Halve | (1) |
| 31 | 32-75-1310 | Spindle Gear | (1) |

| FIG. | PART NO. | DESCRIPTION OF PART | NO. REQ. |
|------|------------|---------------------------------------|----------|
| 32 | 34-40-4480 | O-Ring | (1) |
| 33 | 34-60-0860 | Retaining Ring - External | (1) |
| 34 | 34-60-0920 | Retaining Ring - External | (2) |
| 35 | 38-50-1160 | Spindle | (1) |
| 36 | 40-50-0045 | Guard Spring | (1) |
| 37 | 40-50-0350 | Spring | (1) |
| 38 | 40-50-8040 | Spring | (1) |
| 39 | 42-38-0222 | Rubber Bumper | (1) |
| 40 | 42-42-1020 | Switch Lock-Out | (1) |
| 41 | 42-42-1030 | Spindle Lock Button | (1) |
| 42 | 43-34-0790 | Inner Flange | (1) |
| 43 | 43-34-0795 | Outer Flange | (1) |
| 44 | 44-10-0420 | Guard Lever | (1) |
| 45 | 44-10-0430 | Depth Lever | (1) |
| 46 | 44-20-0650 | Spindle Lock | (1) |
| 47 | ----- | Connector Block Cover | (1) |
| 48 | 44-60-0740 | Pivot Pin | (1) |
| ★ 49 | 44-66-0561 | Retaining Plate | (1) |
| 50 | 45-04-0485 | Bumper Screw | (1) |
| 51 | 45-06-0720 | Felt Seal | (1) |
| 52 | 45-08-0395 | Depth Shaft | (1) |
| 53 | 45-88-1515 | Washer | (1) |
| 54 | 45-88-5615 | Wave Spring Washer | (1) |
| 55 | 49-96-0080 | 3/16 Hex Key | (1) |
| 56 | 06-10-0660 | 1/4-20 x 1/2 Short Neck Carriage Bolt | (1) |
| 57 | 45-88-1560 | Washer | (1) |
| 58 | 43-98-0730 | Bevel Adjustment Knob | (1) |
| 59 | 43-98-0720 | Rip Fence Knob | (1) |
| 60 | 40-50-0650 | Spring | (1) |
| 61 | 06-82-9605 | 10-32 x 3/8 CSK Machine Screw T-25 | (4) |
| 62 | 06-83-1600 | 10-32 x 3/8 Set Screw | (1) |
| 63 | 14-46-2575 | Gear Service Assembly | (1) |
| | 49-22-1001 | Rip Fence (Not Shown) | (1) |

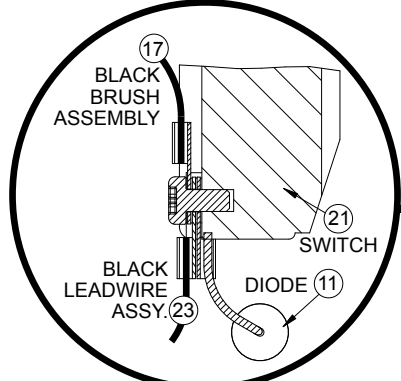
- FIG. NOTE:**
- 2 Orient the ball bearing so that the seal faces the commutator and the shield faces the shaft end.
 - 3 Press needle bearing flush to .015 sub-flush in gearcase.
 - 20,47 Concave side of connector block cover to face connector block.
 - 26,33 Position retaining ring with rounded edge facing lower guard.
 - 46 Functionally check spindle lock. Spindle lock must return briskly when released from engagement in gear.



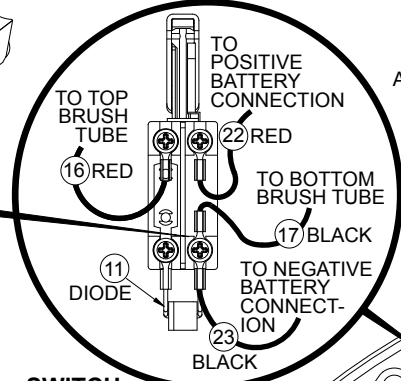
ORIENT DIODE #11 AS SHOWN. CORRECT POLARITY IS CRITICAL FOR PROPER TOOL FUNCTION.

⚠ WARNING
SWITCH AND DIODE ARE POLARITY SENSITIVE
 If wired incorrectly, switch and diode will **be** damaged and destroyed!

Functionally check switch lock-out #40 by attempting to turn on tool by applying a reasonable amount of force, up to 8 lbs., to the switch trigger #21. The tool must not turn on. Release trigger. Actuate the lock-out lever and apply a reasonable amount of force to the switch trigger. The tool must turn on. While the trigger is still in the "ON" position, release the lock-out. Release the trigger. The tool must stop and the lock-out lever must again prevent the actuation of the switch. Repeat the switch check two more times.

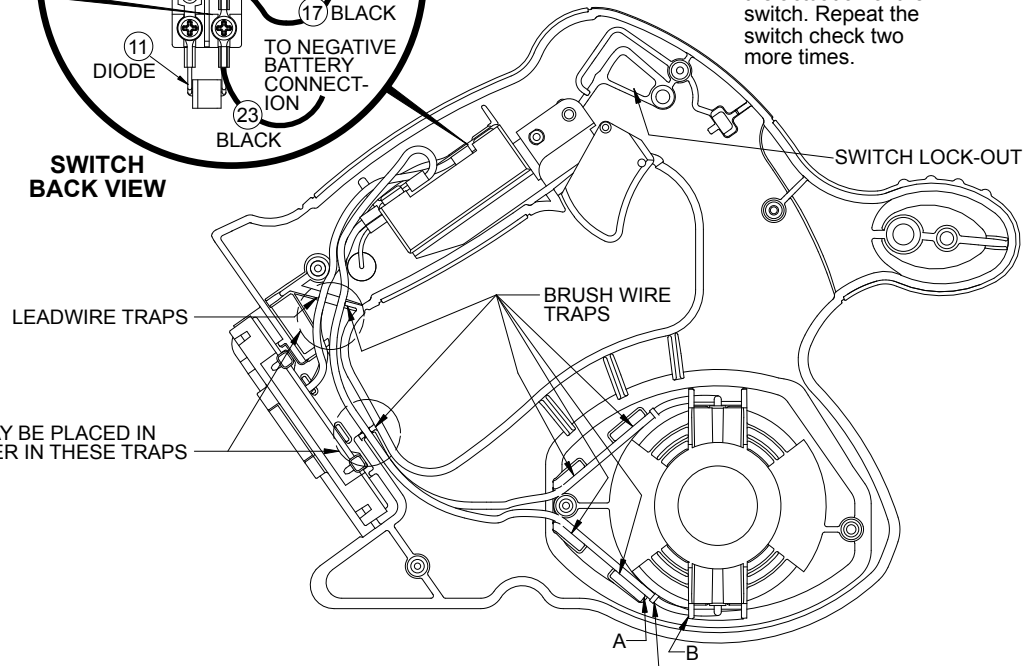


SWITCH DETAIL



SWITCH BACK VIEW

ALL TERMINALS MUST BE ORIENTED AS SHOWN IN THESE VIEWS.



TERMINALS MUST BE LOCATED BETWEEN 'A' AND 'B' FOR BOTH BRUSH ASSEMBLIES.

WIRING SPECIFICATIONS

| Wire No. | Wire Color | Origin or Gauge | Length | Terminals, Connectors and 1 or 2 End Wire Preparation |
|----------|------------|-----------------|--------|---|
| 16 | Red | 22-18-1240 | ---- | Carbon brush assembly. |
| 17 | Black | 22-18-1245 | ---- | Carbon brush assembly. |
| 22 | Red | 23-94-4290 | ---- | Leadwire assembly. |
| 23 | Black | 23-94-4295 | ---- | Leadwire assembly. |
| | | 22-74-0510 | ---- | Diode assembly. |

BULK LEAD WIRE - BULLETIN NO. 58-01-0003

TERMINAL DESCRIPTION

| Code | Part No. | Qty. |
|------|----------|------|
| | | |
| | | |
| | | |