



SERVICE PARTS LIST

BUL.54-08-0203

1/4" ELECTRIC DRILL

REVISED BUL
54-08-0203

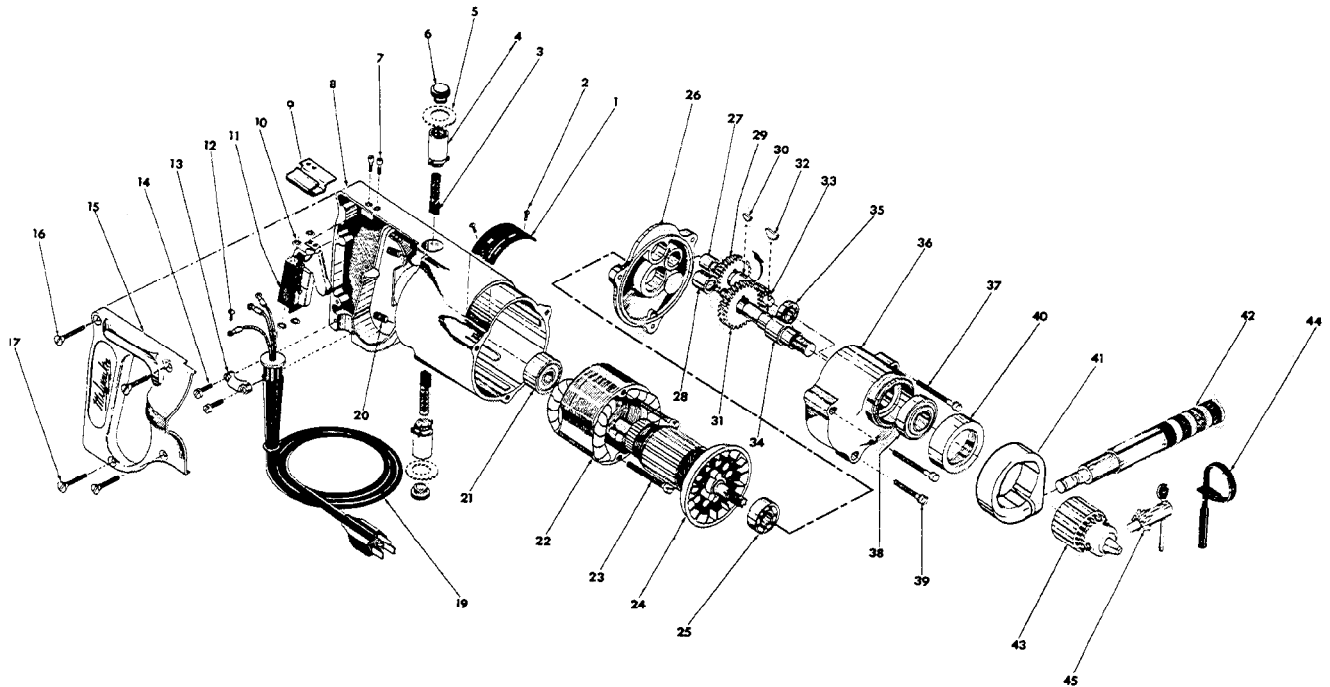
DATE
Feb.'70

Catalog No. 0800

Starting
Serial No. 10-6215

WIRING INSTR.
58-01-0170

Both Model and Serial No. must be furnished to obtain correct parts.



| FIG. | PART NO. | DESCRIPTION OF PART | NO.REQ. | FIG. | PART NO. | DESCRIPTION OF PART | NO.REQ. |
|------|----------|--|---------|------|------------|---|---------|
| | 1 | Name Plate | | 24 | 16-42-1040 | Armature Assy. | |
| ★ | 2 | 6x1/4 Rd,Driv-In Screw | (2) | 25 | 02-04-0940 | Ball Bearing (Pinion End) | |
| | 3 | Carbon Brush Assy. | (2) | 26 | 28-28-0581 | Diaphragm | |
| | 4 | Brush Holder Assy. | (2) | 27 | 02-50-1640 | Needle Bearing | |
| | 5 | Brush Holder Insul. Washer | (2) | 28 | 02-50-2110 | Needle Bearing | |
| | 6 | Brush Retaining Screw | (2) | 29 | 32-40-1241 | Intermediate Gear | |
| | 7 | 6-32x5/16 Fil. Hd. Sem Sw. Mtg. Scrs. | (2) | 30 | 06-42-0800 | Woodruff Key | |
| | 8 | 28-50-4481 Motor Housing Assy. (Incl. Items 15,16&17) | | 31 | 32-75-1881 | Spindle Gear | |
| ★ | 9 | 42-68-0225 Wire Clamp | | 32 | 06-42-1200 | Woodruff Key | |
| | 10 | 06-97-1800 Lock Washers | (4) | 33 | 36-66-2451 | Intermediate Pinion Shaft | |
| | 11 | 23-66-0230 Switch | | 34 | 38-50-2551 | Spindle | |
| | 12 | 06-81-8625 6-32x1/4 Rd. Hd. Sem (Bronze) Ground Scr. | | 35 | 02-04-0640 | Ball Bearing | |
| | 13 | 28-17-0400 Cord Clamp | | 36 | 28-14-0681 | Gear Case | |
| | 14 | 06-81-6150 8-32x1/2 Fil. Hd. Sem Cord Clamp Scrs. | (2) | 37 | 06-81-6650 | 8-32x1-3/4 Fil. Hd. Sem Gear Case Scrs. | (2) |
| ★ | 15 | 28-20-3601 Handle Cover | | 38 | 02-04-1560 | Ball Bearing | |
| | 16 | 06-81-3750 8-32x1 Oval Hd. Handle Cover Scrs. | (2) | 39 | 06-81-6350 | 8-32x1 Fil. Hd. Sem Gear Case Scr. | |
| | 17 | 06-81-3700 8-32x7/8 Oval Hd. Handle Cover Scrs. | (2) | 40 | 42-52-0071 | Bearing Cap | |
| | 19 | 22-64-0170 Cord Set | | ★ | 41 | 28-82-0130 Handle Ring | |
| | 20 | 06-83-2650 1/4-20x3/8 Hd'less Brush Holder Set Scrs(2) | | 42 | 43-62-0160 | Handle | |
| | 21 | 02-04-0970 Ball Bearing (Comm. End) | | 43 | 48-66-0300 | Chuck | |
| ★ | 22 | 18-42-1040 Field Assy. | | 44 | 48-66-4080 | Key Holder | |
| | 23 | 06-81-6600 8-32x1-3/4 Fil. Hd. Sem Field Scrs. | (2) | 45 | 48-66-3200 | Chuck Key | |