



SERVICE PARTS LIST

BUL. 54-08-0401

5/16" ELECTRIC DRILL

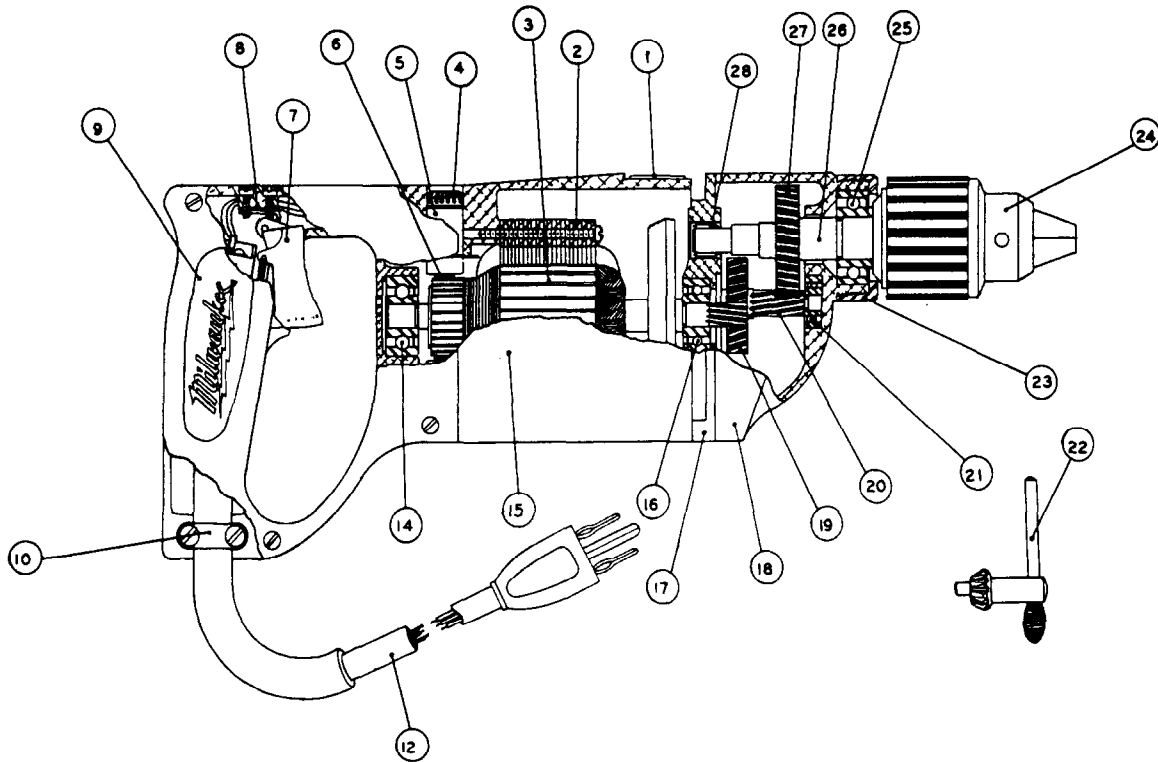
REVISED BUL 612-3 DATE FEB. '68

Catalog No. 0850

Starting Serial No. **12-2301**

WIRING INSTR.

Both Model and Serial No. must be furnished to obtain correct parts.



CORRECTS AND SUPERCEDES SERVICE BULLETIN 612-3 DATED 4/23/58

| FIG. | PART NO. | DESCRIPTION OF PART |
|------|------------|-----------------------------------|
| 1 | 12-98-0800 | Name Plate |
| 2 | 18-42-1040 | Field Assembly |
| 3 | 16-42-1040 | Armature Assembly |
| 4 | 23-44-0060 | Brush Retaining Screw |
| 5 | 22-22-0080 | Brush Holder Assembly |
| 6 | 22-18-0100 | Carbon Brush Assembly (per set 2) |
| 7 | 23-66-0230 | Switch |
| 8 | 45-36-0110 | Switch Spacer |
| 9 | 28-20-3141 | Handle Cover |
| 10 | 28-17-0400 | Cord Clamp Strap |
| 12 | 22-64-0170 | Cord Set |
| 14 | 02-04-0970 | Ball Bearing (Comm. End) |
| 15 | 28-50-4481 | Motor Housing |

ILLUSTRATED PARTS

| FIG. | PART NO. | DESCRIPTION OF PART |
|------|------------|---------------------------|
| 16 | 02-04-0940 | Ball Bearing (Pinion End) |
| 17 | 28-28-0581 | Diaphragm |
| 18 | 28-14-0681 | Gear Case |
| 19 | 32-40-1241 | Intermediate Gear |
| 20 | 36-66-2501 | Intermediate Pinion Shaft |
| 21 | 02-04-0640 | Ball Bearing |
| 22 | 48-66-3240 | Chuck Key |
| 23 | 42-52-0071 | Bearing Cap |
| 24 | 48-66-0540 | Chuck (1/2"-20 Thread) |
| 25 | 02-04-1560 | Ball Bearing |
| 26 | 38-50-2551 | Spindle |
| 27 | 32-75-1921 | Spindle Gear |
| 28 | 02-50-2110 | Needle Bearing |

MISCELLANEOUS PARTS NOT SHOWN

| PART NO. | DESCRIPTION OF PART |
|------------|---|
| 43-62-0161 | Handle |
| 44-90-0130 | Handle Ring |
| 06-42-0800 | Woodruff Keys |
| 06-81-8400 | 4-40x1/4" Rd. Hd. Name Plate Screws |
| 06-81-5800 | 6-32x5/16" Fil. Hd. Sems Switch Mtg. Scs. (2) |
| 23-86-0110 | Brush Holder Insul. Washer |
| 23-16-0085 | Switch Insulator |
| 02-50-1640 | Needle Bearing |

| PART NO. | DESCRIPTION OF PART |
|------------|--|
| 06-81-6150 | 8-32x1/2" Fil. Hd. Sem Cord Clamp Strap Scs. (2) |
| 06-81-8625 | 6-32x1/4" Rd. Hd. Ground Screw (Brass) |
| 06-81-6350 | 8-32x1" Fil. Hd. Gear Case Screws (Sems) |
| 06-81-6650 | 8-32x1-3/4" Fil. Hd. Gear Case Scs. (Sem) (2) |
| 06-81-6600 | 8-32x1-3/4" Fil. Hd. Field Screws (Sem) (2) |
| 06-83-2650 | 1/4-20x3/8" Hd'less Brush Holder Set Scs. |
| 06-81-3700 | 8-32x7/8" Oval Hd. Handle Cover Screws (4) |
| 48-03-0010 | Attachment Plug Adaptor |

Numbers in brackets indicate number required.