



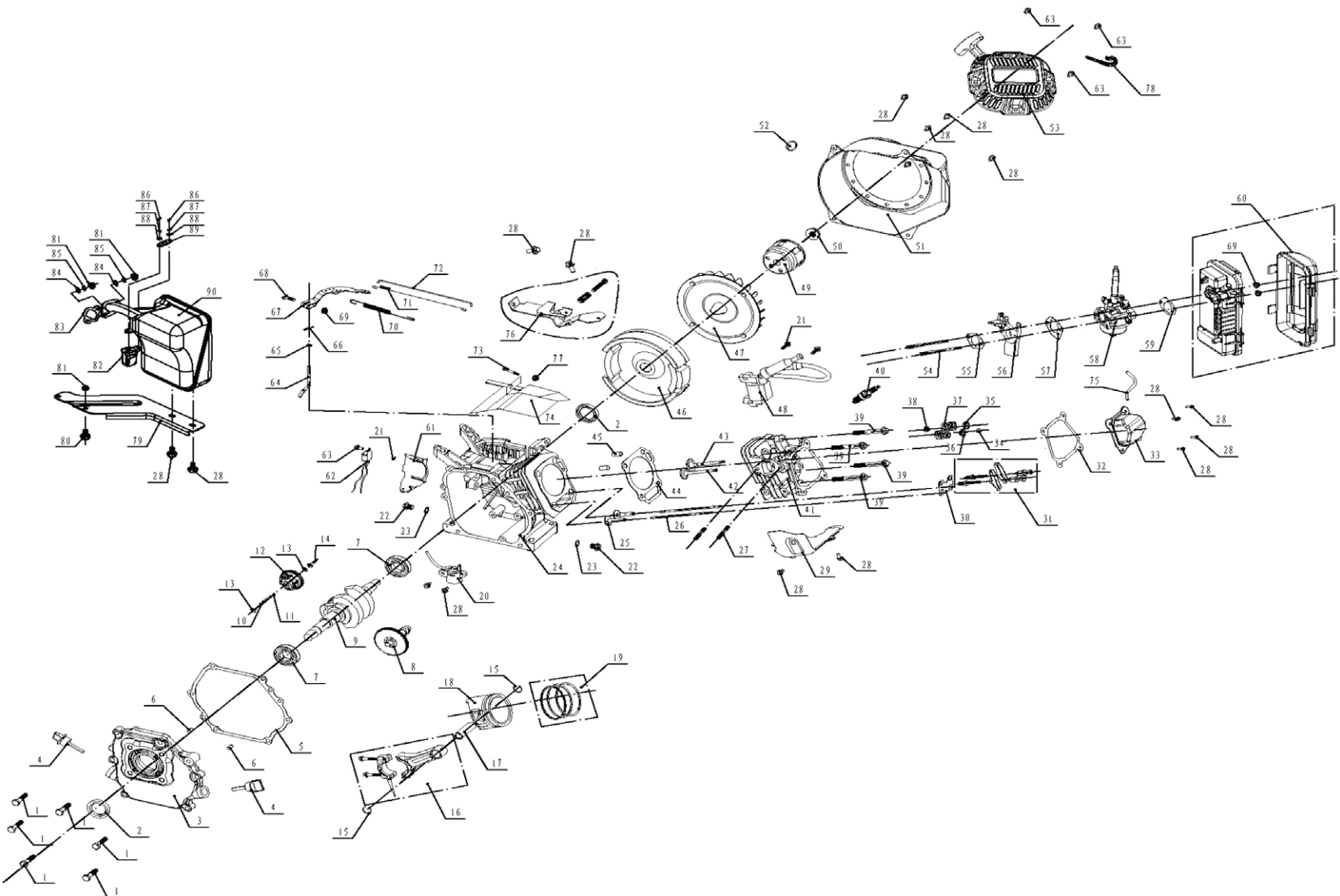
# Engine Parts Manual

## 163cc (G24)

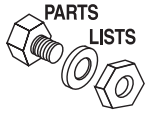
### **NOTICE!**

The information in this manual is known to be accurate as of the date of release shown on the cover. However, engineering changes can occur without notice. To obtain the proper parts, please be sure to use the serial number of the unit being serviced when ordering from this manual. Always refer to any part notes and changes before ordering. All other parts not shown in this manual can be found on Generac's exploded view drawings online on GENservice at [www.generac.com](http://www.generac.com).

Engine Exploded View



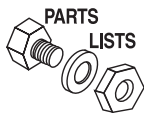
# 163cc ENGINE



| ITEM | PART NO.   | QTY. | DESCRIPTION                |
|------|------------|------|----------------------------|
| 1    | 0H33750125 | 6    | BOLT, M8X33.5              |
| 2    | 0H33750112 | 2    | SEAL, OIL                  |
| 3    | 0H33750121 | 1    | COVER, CRANKCASE           |
| 4    | 0H33750120 | 2    | DIPSTICK, OIL              |
| 5    | 0H33750122 | 1    | GASKET, CRANKCASE          |
| 6    | 0H33750124 | 2    | PIN, DOWEL, 8X14           |
| 7    | 0H33750123 | 2    | BEARING, BALL (6205)       |
| 8    | 0J08180151 | 1    | SHAFT, CAM                 |
| 9    | 0J08180150 | 1    | CRANKSHAFT                 |
| 10   | 0H33750117 | 1    | SHAFT, REGULATING          |
| 11   | 0H33750118 | 1    | RING, SNAP                 |
| 12   | 0H33750279 | 1    | GEAR, REGULATOR            |
| 13   | 0H33750280 | 2    | WASHER, SPEED SWINGING ROD |
| 14   | 0H33750281 | 1    | SPOOL, GOVERNOR            |
| 15   | 0H33750149 | 2    | CIRCLIP, PISTON PIN        |
| 16   | 0H33750152 | 1    | ROD ASSY., CONNECTING      |
| 17   | 0H33750151 | 1    | PIN, PISTON                |
| 18   | 0J08180142 | 1    | PISTON                     |
| 19   | 0J08180148 | 1    | RING SET, PISTON           |
| 20   | 0H33750165 | 1    | SENSOR, LOW OIL            |
| 21   | 0H33750167 | 3    | BOLT, M6X22                |
| 22   | 0H33750110 | 2    | BOLT, OIL DRAIN, M10X15    |
| 23   | 0H33750111 | 2    | GASKET, OIL DRAIN BOLT     |
| 24   | 0J08180113 | 1    | CRANKCASE                  |
| 25   | 0J08180134 | 2    | TAPPET, VALVE              |
| 26   | 0H33750143 | 2    | ROD, PUSH                  |
| 27   | 0H33750136 | 2    | STUD, M8X34                |
| 28   | 0H33750126 | 16   | BOLT, M6X12                |
| 29   | 0H33750145 | 1    | SHROUD, CONTROL            |
| 30   | 0H33750130 | 1    | GUIDE ASSY., PUSH          |
| 31   | 0H33750129 | 2    | ROCKER ASSY., VALVE        |
| 32   | 0H33750128 | 1    | GASKET, HEAD COVER         |
| 33   | 0H33750127 | 1    | COVER, HEAD                |
| 34   | 0H33750131 | 1    | CAP                        |
| 35   | 0H33750133 | 1    | SEAT, INTAKE SPRING        |
| 36   | 0H33750132 | 1    | SEAT, EXHAUST SPRING       |
| 37   | 0H33750134 | 2    | SPRING, VALVE              |
| 38   | 0H33750146 | 1    | PIPE, OIL SEAL             |
| 39   | 0H3375A123 | 4    | BOLT, M8X60                |
| 40   | 0H33750169 | 1    | PLUG, SPARK                |

| ITEM | PART NO.   | QTY. | DESCRIPTION               |
|------|------------|------|---------------------------|
| 41   | 0J08180130 | 1    | HEAD, CYLINDER            |
| 42   | 0J08180132 | 1    | VALVE, EXHAUST            |
| 43   | 0J08180133 | 1    | VALVE, INTAKE             |
| 44   | 0J08180131 | 1    | GASKET, HEAD COVER        |
| 45   | 0H33750139 | 2    | PIN, DOWEL 10X16          |
| 46   | 0H33750155 | 1    | FLYWHEEL                  |
| 47   | 0H33750156 | 1    | FAN, FLYWHEEL             |
| 48   | 0H33750168 | 1    | COIL, IGNITION            |
| 49   | 0J9480A111 | 1    | STARTING FLANGE CUP       |
| 50   | 0H33750158 | 1    | NUT, M14X1.5              |
| 51   | 0J9480A112 | 1    | HOUSING, BLOWER           |
| 52   | 0H33750282 | 1    | CLIP, EVAPORATION HOSE    |
| 53   | 0J0807     | 1    | STARTER, RECOIL           |
| 54   | 0H33750277 | 2    | STUD, M6X105              |
| 55   | 0H33750175 | 1    | GASKET, INLET             |
| 56   | 0H33750176 | 1    | BLOCK, CARBURETOR CUSHION |
| 57   | 0H33750177 | 1    | GASKET, CARBURETOR        |
| 58   | 0J5774A    | 1    | CARBURETOR                |
| 59   | 0H33750179 | 1    | GASKET, AIR CLEANER       |
| 60   | 0H3375A122 | 1    | CLEANER, AIR              |
| 61   | 0H33750163 | 1    | SHROUD                    |
| 62   | 0H33750283 | 1    | SWITCH ASSY., OIL LEVEL   |
| 63   | 0H3375A124 | 4    | BOLT, M6X8                |
| 64   | 0H33750114 | 1    | SHAFT, GOVERNOR ARM       |
| 65   | 0H33750115 | 1    | WASHER                    |
| 66   | 0H33750116 | 1    | PIN, SPLIT                |
| 67   | 0H33750185 | 1    | ARM, REGULATING           |
| 68   | 0H33750184 | 1    | BOLT, LOCK                |
| 69   | 0H33750171 | 3    | NUT, M6                   |
| 70   | 0H33750181 | 1    | SPRING, REGULATING        |
| 71   | 0J9480A114 | 1    | SPRING, RETURN            |
| 72   | 0H33750183 | 1    | ROD, PULL                 |
| 73   | 0H33750284 | 1    | BOLT, M5X25               |
| 74   | 0J08180121 | 1    | SHROUD, CONTROL           |
| 75   | 0H33750172 | 1    | TUBE, BREATHER            |
| 76   | 0H33750180 | 1    | REGULATOR ASSY.           |
| 77   | 0H33750278 | 1    | NUT, M5                   |
| 78   | 0J5628C110 | 1    | CLAMP, EVAPORATION PIPE   |
| 79   | 0H3379A    | 1    | BRACKET, MUFFLER          |

Continued on Back



## 163cc ENGINE

| ITEM | PART NO.   | QTY. | DESCRIPTION                  |
|------|------------|------|------------------------------|
| 80   | OJ08180244 | 1    | BOLT, FLANGE M8X35           |
| 81   | OJ08180243 | 3    | NUT, M8                      |
| 82   | OJ5204     | 1    | VALVE, AIR 2010              |
| 83   | 0H3378     | 1    | GASKET, MUFFLER              |
| 84   | OJ08180229 | 2    | WASHER, FLAT 08              |
| 85   | OJ08180230 | 2    | WASHER, SPRING, 08           |
| 86   | OJ5628C111 | 2    | SCREW, X-RDSD PN HD<br>M6X20 |
| 87   | OJ08180235 | 2    | WASHER, SPRING, 06           |
| 88   | OJ08180248 | 2    | WASHER, FLAT, 06             |
| 89   | OJ5205     | 1    | GASKET, AIR VALVE, 2010      |
| 90   | OJ6617B    | 1    | MUFFLER ASSY.                |