

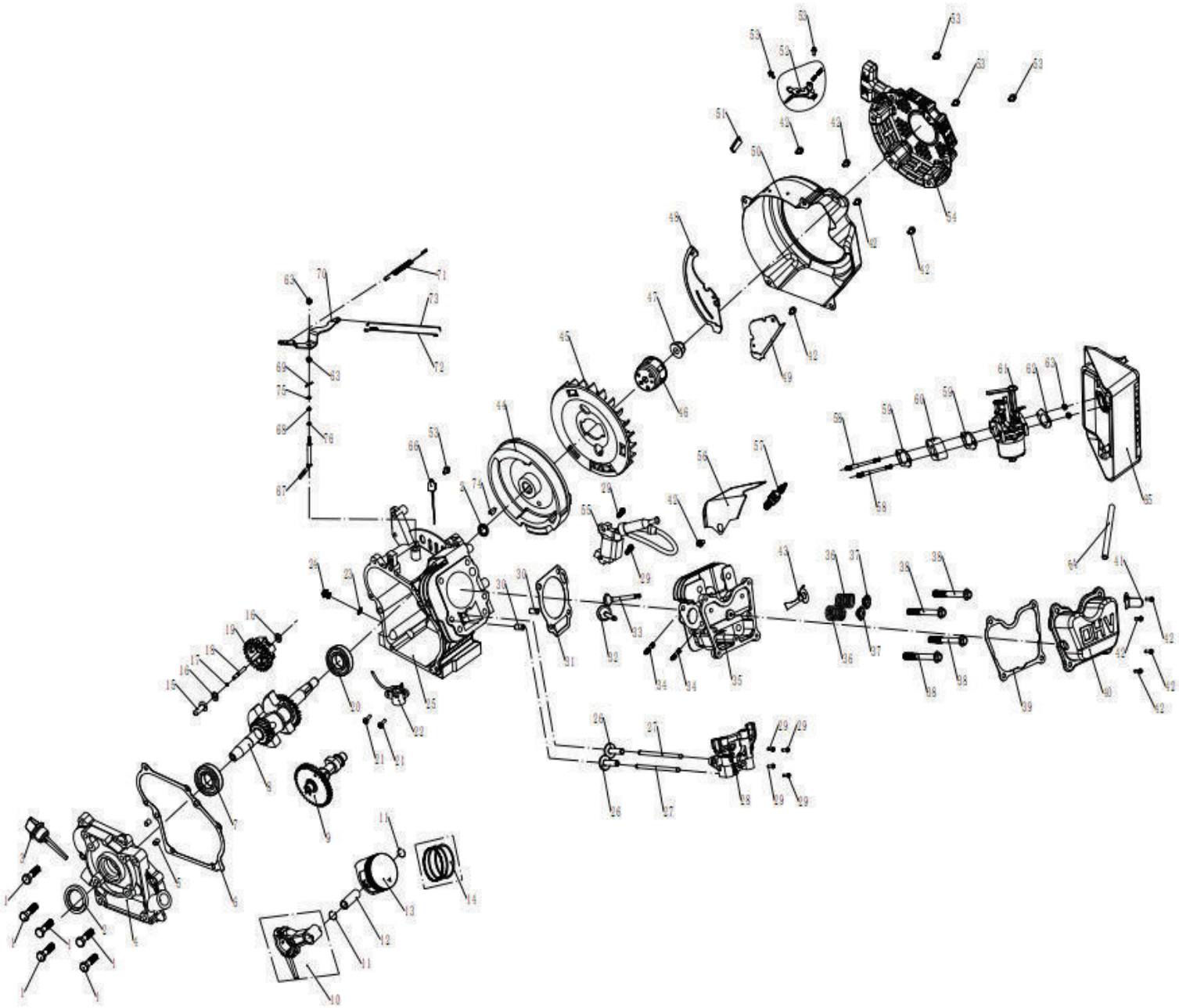


Engine Parts Manual

93cc (G24) EPA

NOTICE!

The information in this manual is known to be accurate as of the date of release shown on the cover. However, engineering changes can occur without notice. To obtain the proper parts, please be sure to use the serial number of the unit being serviced when ordering from this manual. Always refer to any parts notes and changes before ordering. All other parts not shown in this manual can be found on Generac's exploded view drawings online on GENservice at www.generac.com.



93cc Engine

93cc Engine



ITEM	PART NO.	DESCRIPTION	QTY.
1	0K95530110	BOLT (M6X25)	6
2	0K95530111	OIL SEAL (B1730)	2
3	0K95530112	OIL DIPSTICK ASSEMBLY	2
4	0K95530113	CRANKCASE COVER	1
5	0K95530114	PIN SET 8X12	2
6	0K95530115	CRANKCASE GASKET	1
7	0K95530116	BEARING (6107)	1
8	0K95770110	CRANKSHAFT V2	1
9	0K95770111	CAMSHAFT	1
10	0K95530119	CONNECTING ROD ASSEMBLY	1
11	0K95530120	PISTON PIN CIRCLIP	2
12	0K95770112	PISTON PIN	1
13	0K95770113	PISTON	1
14	0K95770114	PISTON RING SET	1
15	0K95530124	GOVERNOR SPOOL	1
16	0H33750280	SPEED SWINGING ROD WASHER	2
17	0K95530125	SPLIT PIN	1
18	0K95530126	SPEED GOVERNING SHAFT	1
19	0K95530127	SPEED GOVERNING GEAR	1
20	0K95530128	BEARING (6107)	1
21	0K95770117	CROSS RECESS BOLT (M6X16)	2
22	0K95770118	LOW OIL SENSOR	1
23	0H33750111	OIL DRAIN BOLT GASKET	2
24	0H33750110	OIL DRAIN BOLT (M10X1.25X15)	2
25	0K95770119	CRANKCASE	1
26	0K95530130	VALVE TAPPET	2
27	0K95530131	PUSHROD	2
28	0K95530132	VALVE ROCKER ASSEMBLY	1
29	0K95530133	BOLT (M6X18)	6
30	0K95530134	DOWEL PIN	2
31	0K95770120	CYLINDER HEAD GASKET	1
32	0K95530136	EXHAUST VALVE	1
33	0K95530137	INTAKE VALVE	1

ITEM	PART NO.	DESCRIPTION	QTY.
34	0H33750136	STUD (M8X34)	2
35	0K95770121	CYLINDER HEAD	1
36	0K95530139	VALVE SPRING	2
37	0K95530140	VALVE SPRING SEAT	2
38	0K95530141	BOLT (M8X50)	4
39	0K95530142	CYLINDER HEAD COVER GASKET	1
40	0K95530143	CYLINDER HEAD COVER	1
41	0K95530144	IGNITION COIL LIMITING PLATE	1
42	0H33750126	BOLT (M6X12)	10
43	0K95530145	OIL CIRCUIT BAFFLE	1
44	0K95530146	FLYWHEEL	1
45	0K95530147	COOLING FAN	1
46	0K9577A110	STARTING FLANGE	1
47	0K95530149	NUT (M12X1.5)	1
48	0K95530150	REAR WIND SCREEN	1
49	0K95770122	FRONT WIND SCREEN	1
50	0K95770123	BLOWER HOUSING	1
51	0K95770124	RUBBER JAM	1
52	0K95770125	GOVERNOR ASSEMBLY	1
53	0H3375A124	BOLT (M6X8)	6
54	0K95770126	RECOIL STARTER ASSEMBLY	1
55	0K9577A111	IGNITION COIL	1
56	0K95530156	ENGINE SHROUD	1
57	0K95770127	SPARK PLUG	1
58	0K95520118	BOLT (M6X91)	2
59	0K95530159	CARBURETOR GASKET	2
60	0K95530160	CARBURETOR CUSHION BLOCK	1
61	0K95770128	CARBURETOR	1
62	0K95530162	AIR CLEANER GASKET	1
63	0H33750171	NUT (M6)	4
64	0K95530163	BREATHER TUBE	1
65	0K95770129	AIR CLEANER ASSEMBLY	1
66	0H33750283	SINGLE GUIDE VALVE	1



93cc Engine

ITEM	PART NO.	DESCRIPTION	QTY.
67	0K95530165	SPEED SWINGING ROD	1
68	0K95530166	SPEED SWINGING ROD GASKET	1
69	0H33750116	SPLIT PIN	1
70	0K95530167	SPEED GOVERNING ARM	1
71	0K95530168	SPEED GOVERNING SPRING	1
72	0K95530169	THROTTLE RESET SPRING	1
73	0K95530170	SPEED GOVERNING PULL ROD	1
74	0K95770131	WOODRUFF KEY (5X5X16)	1
75	0H33750118	REGULATING SHAFT CLAMP	1
76	0K95770132	LEVER SHAFT WASHER	1

©2015 Generac Power Systems, Inc. All rights reserved.
Specifications are subject to change without notice
No reproduction allowed in any form without prior written consent from Generac Power Systems, Inc.