



# SERVICE PARTS LIST

**BULLETIN NO.**  
**54-08-1149**

SPECIFY CATALOG NO. AND SERIAL NO. WHEN ORDERING PARTS		REVISED BULLETIN	DATE
<b>1/2" REVERSING DRILL</b>		54-08-1148	Mar.'93
CATALOG NO. <b>1001-1</b>		WIRING INSTRUCTION	
STARTING SERIAL NO. <b>491-258006</b>		<b>58-01-0771</b>	

**EXAMPLE:**



Component Parts ( Small #)  
Are Included When Ordering  
The Assembly (Large #).

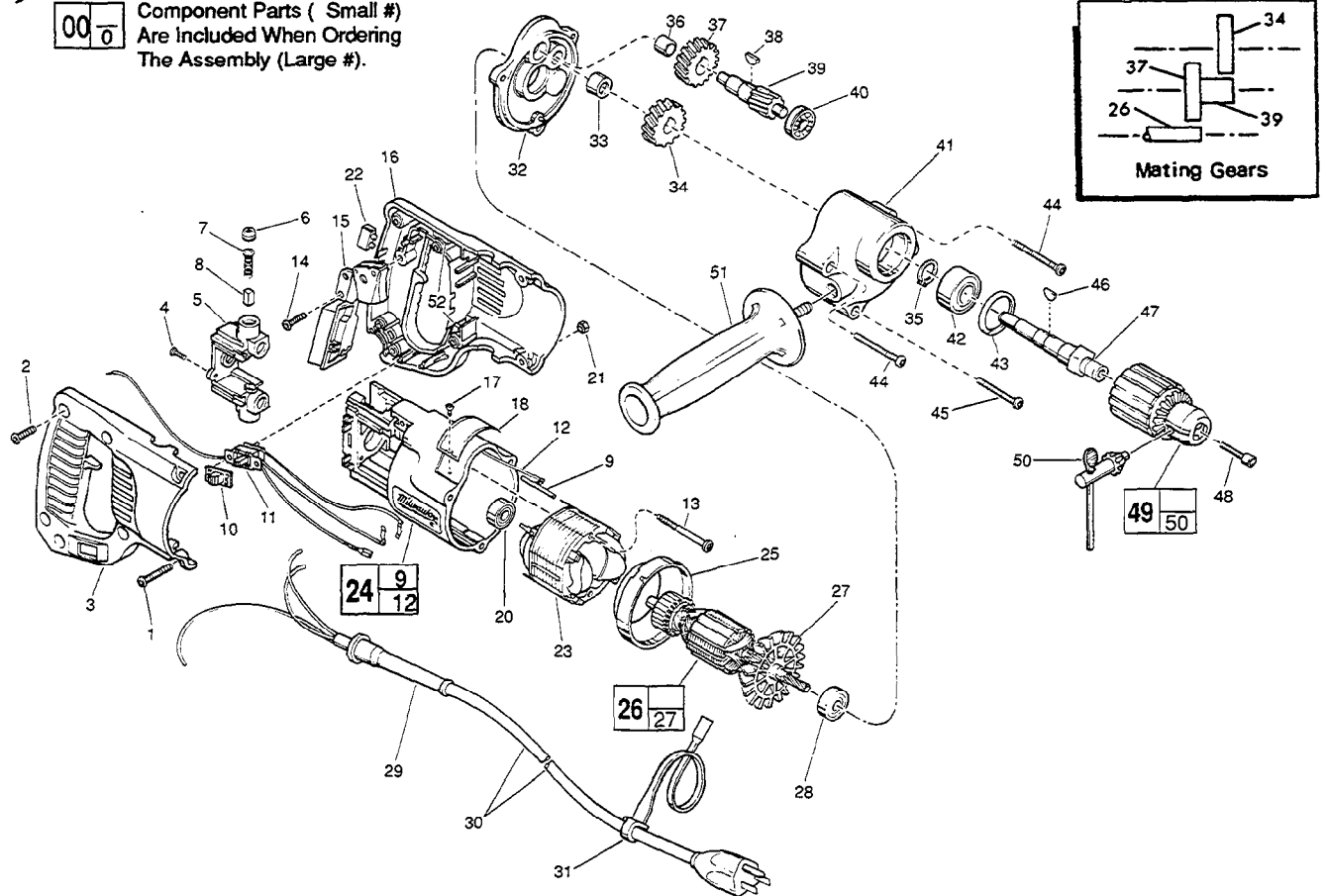


FIG.	PART NO.	DESCRIPTION OF PART	NO. REQ.
	1	8-32x1-1/4" Slit. Pan Hd. Taptite T-20	(2)
★	2	8-16 x 5/8" Slit. Pan Hd. Plastite T-20	(5)
★	3	Right Handle Half	(1)
	4	6-19 x 1/2" Slit. Pan Hd. Plast. T-15	(2)
★	5	Brush Holder Assembly	(1)
	6	Brush Retaining Cap	(2)
	7	Brush Spring	(2)
	8	Carbon Brush	(2)
	9	Ground Pin	(1)
	10	Switch Cap	(1)
★	11	Reversing Switch Assembly	(1)
	12	Ground Wire Assembly	(1)
★	13	8-16 x 1-7/8" Slit. Pan Hd. Plast. T-20	(2)
★	14	8-16 x 5/8" Slit. Pan Hd. Plastite T-20	(1)
	15	On-Off Switch	(1)
★	16	Left Handle Half	(1)
	17	Nameplate Screw	(2)
★	18	Nameplate Blank	(1)
	20	Ball Bearing	(1)
	21	8-32 Hex Nut	(2)
	22	Terminal Block	(1)
★	23	120 Volt Field - Auto Assembly	(1)
★	24	Motor Housing Assembly	(1)
	25	Baffle	(1)
	26	120 Volt Armature	(1)
★	27	Fan Assembly	(1)
	28	Ball Bearing	(1)
	29	Cord Protector	(1)

FIG.	PART NO.	DESCRIPTION OF PART	NO. REQ.
★	30	22-64-3190 Cord Set	(1)
	31	48-66-4040 Key Holder	(1)
	32	28-28-0601 Diaphragm	(1)
	33	02-50-2440 Needle Bearing	(1)
	34	32-75-1601 Spindle Gear	(1)
	35	34-60-1200 Retaining Ring	(1)
	36	02-50-1640 Needle Bearing	(1)
	37	32-40-1241 Intermediate Gear	(1)
	38	06-42-0800 Woodruff Key	(1)
★	39	36-66-2002 Intermediate Shaft	(1)
	40	02-04-0640 Ball Bearing	(1)
	41	28-14-1910 Gear Case	(1)
	42	02-04-1536 Ball Bearing	(1)
	43	34-80-2500 Retaining Ring	(1)
★	44	06-82-7453 8-16 x 2-1/4" Slit. Pan Hd. Plastite T-20	(2)
	45	06-82-7354 8-16 x 1-3/8" Slit. Pan Hd. Plastite T-20	(1)
	46	06-42-1600 Woodruff Key	(1)
	47	38-50-5470 Spindle	(1)
	48	06-75-3150 1/4-20 x 1 L.H. Skt. Cap Screw	(1)
★	49	48-66-1360 1/2" Chuck	(1)
	50	48-66-3280 Chuck Key	(1)
	51	43-62-0875 Side Handle	(1)
★	52	14-46-1001 Foam Slug Kit-(10 Slugs)	(2)

**FIG. LUBRICATION**

41 3-1/4 Oz. Type "A" Grease, 49-08-0800.