

SERVICE PARTS LIST

BULLETIN NO.
54-08-1151

SPECIFY CATALOG NO. AND SERIAL NO. WHEN ORDERING PARTS		REVISED BULLETIN 54-08-1150	DATE Mar. '95
1/2" REVERSING DRILL		WIRING INSTRUCTION 58-01-0771	
CATALOG NO.	1001-1	STARTING SERIAL NO.	491A

EXAMPLE:

00
0

Component Parts (Small #)
Are Included When Ordering
The Assembly (Large #).

FOR SERIAL NUMBERS:
491A394460224 TO 491A395080079
USE SERVICE PARTS LIST ON
REVERSE SIDE OF THIS BULLETIN

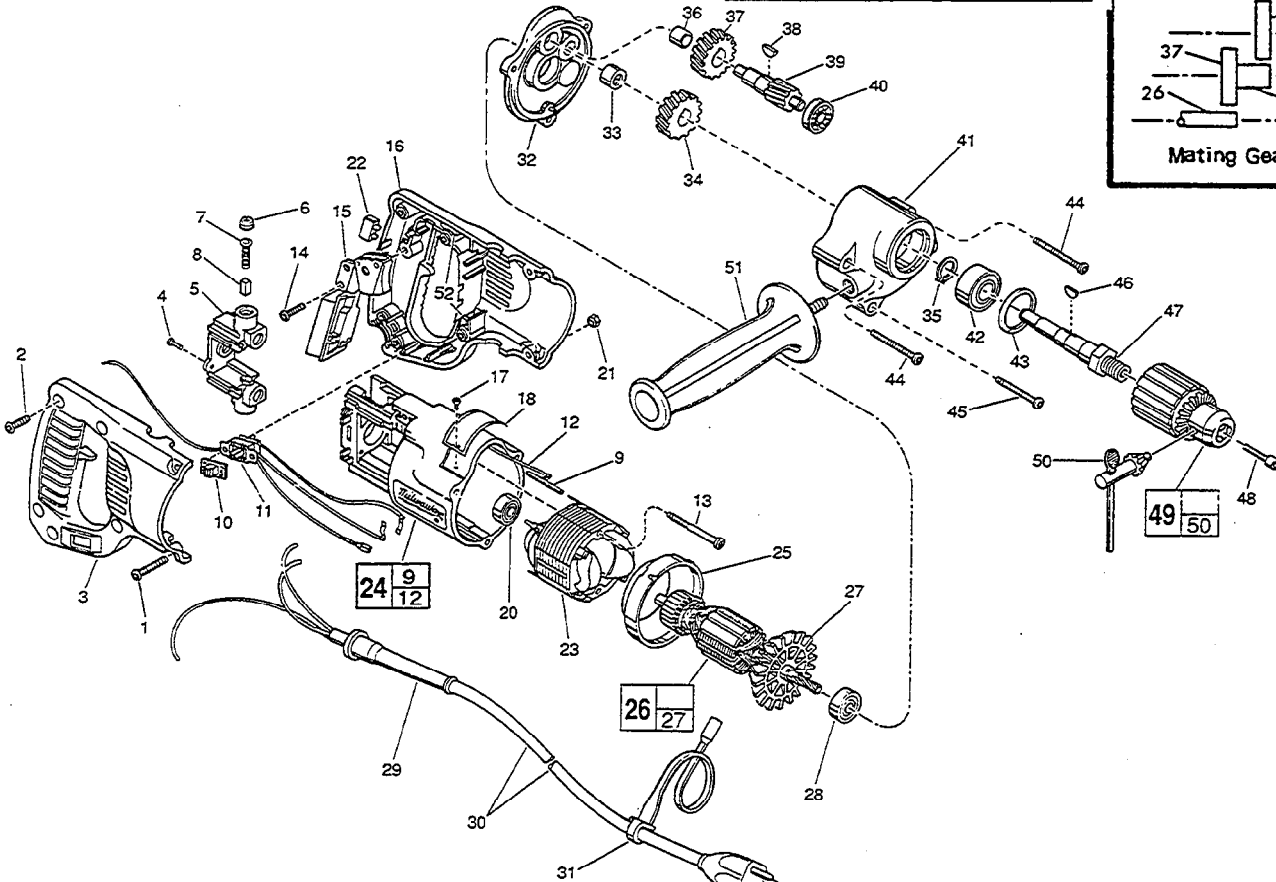
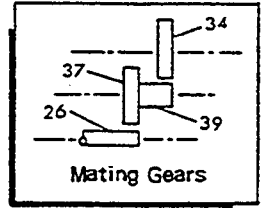


FIG.	PART NO.	DESCRIPTION OF PART	NO. REQ.	FIG.	PART NO.	DESCRIPTION OF PART	NO. REQ.
	1	06-82-5390 8-32x1-1/4" Slit. Pan Hd. Tap Tite T-20	(2)	30	22-64-3190	Cord Set	(1)
	2	06-82-7270 8-16 x 5/8" Slit. Pan Hd. Plastite T-20	(5)	31	48-66-4040	Key Holder	(1)
	3	31-44-1651 Right Handle Half	(1)	32	28-28-0601	Diaphragm	(1)
	4	06-82-7240 6-19 x 1/2" Slit. Pan Hd. Plast. T-15	(2)	33	02-50-2440	Needle Bearing	(1)
	5	22-22-1380 Brush Holder Assembly	(1)	34	32-75-1601	Spindle Gear	(1)
	6	23-44-0190 Brush Retaining Cap	(2)	35	34-60-1200	Retaining Ring	(1)
	7	23-52-0160 Brush Spring	(2)	36	02-50-1640	Needle Bearing	(1)
	8	22-16-0275 Carbon Brush	(2)	37	32-40-1241	Intermediate Gear	(1)
	9	44-60-0530 Ground Pin	(1)	38	06-42-0800	Woodruff Key	(1)
	10	31-12-0196 Switch Cap	(1)	39	36-66-2002	Intermediate Shaft	(1)
	11	23-66-1868 Reversing Switch Assembly	(1)	40	02-04-0640	Ball Bearing	(1)
	12	23-94-6100 Ground Wire Assembly	(1)	41	28-14-1910	Gear Case	(1)
	13	06-82-7410 8-16 x 1-7/8" Slit. Pan Hd. Plast. T-20	(2)	42	02-04-1536	Ball Bearing	(1)
	14	06-82-7270 8-16 x 5/8" Slit. Pan Hd. Plastite T-20	(1)	43	34-80-2500	Retaining Ring	(1)
	15	23-66-0167 On-Off Switch	(1)	44	06-82-7453	8-16 x 2-1/4" Slit. Pan Hd. Plastite T-20	(2)
	16	31-44-1656 Left Handle Half	(1)	45	06-82-7354	8-16 x 1-3/8" Slit. Pan Hd. Plastite T-20	(1)
★	17	06-72-1720 Nameplate Rivet	(2)	46	06-42-1600	Woodruff Key	(1)
★	18	12-99-1750 Service Nameplate	(1)	47	38-50-5470	Spindle	(1)
	20	02-04-0845 Ball Bearing	(1)	48	06-75-3150	1/4-20 x 1 L.H. Skt. Cap Screw	(1)
	21	06-55-0835 8-32 Hex Nut	(2)	49	48-66-1360	1/2" Chuck	(1)
	22	22-56-0456 Terminal Block	(1)	50	48-66-3280	Chuck Key	(1)
	23	18-31-0200 120 Volt Field - Auto Assembly	(1)	51	43-62-0875	Side Handle	(1)
	24	31-50-0846 Motor Housing Assembly	(1)	52	14-46-1001	Foam Slug Kit-(10 Slugs)	(2)
	25	31-05-0050 Baffle	(1)				
	26	16-30-0325 120 Volt Armature	(1)				
	27	22-84-0531 Fan Assembly	(1)				
	28	02-04-0911 Ball Bearing	(1)				
	29	44-76-0210 Cord Protector	(1)				

FIG. LUBRICATION

41 3-1/4 Oz. Type "A" Grease, 49-08-0800.

MILWAUKEE ELECTRIC TOOL CORPORATION
13135 W. LISBON RD., BROOKFIELD, WI 53005



SERVICE PARTS LIST

BULLETIN NO.

SPECIFY CATALOG NO. AND SERIAL NO. WHEN ORDERING PARTS		REVISED BULLETIN	DATE
1/2" REVERSING DRILL			
CATALOG NO.	1001-1	WIRING INSTRUCTION 58-01-0773	
	STARTING SERIAL NO.		

EXAMPLE:
Component Parts (Small #)
Are Included When Ordering
The Assembly (Large #).

00 0

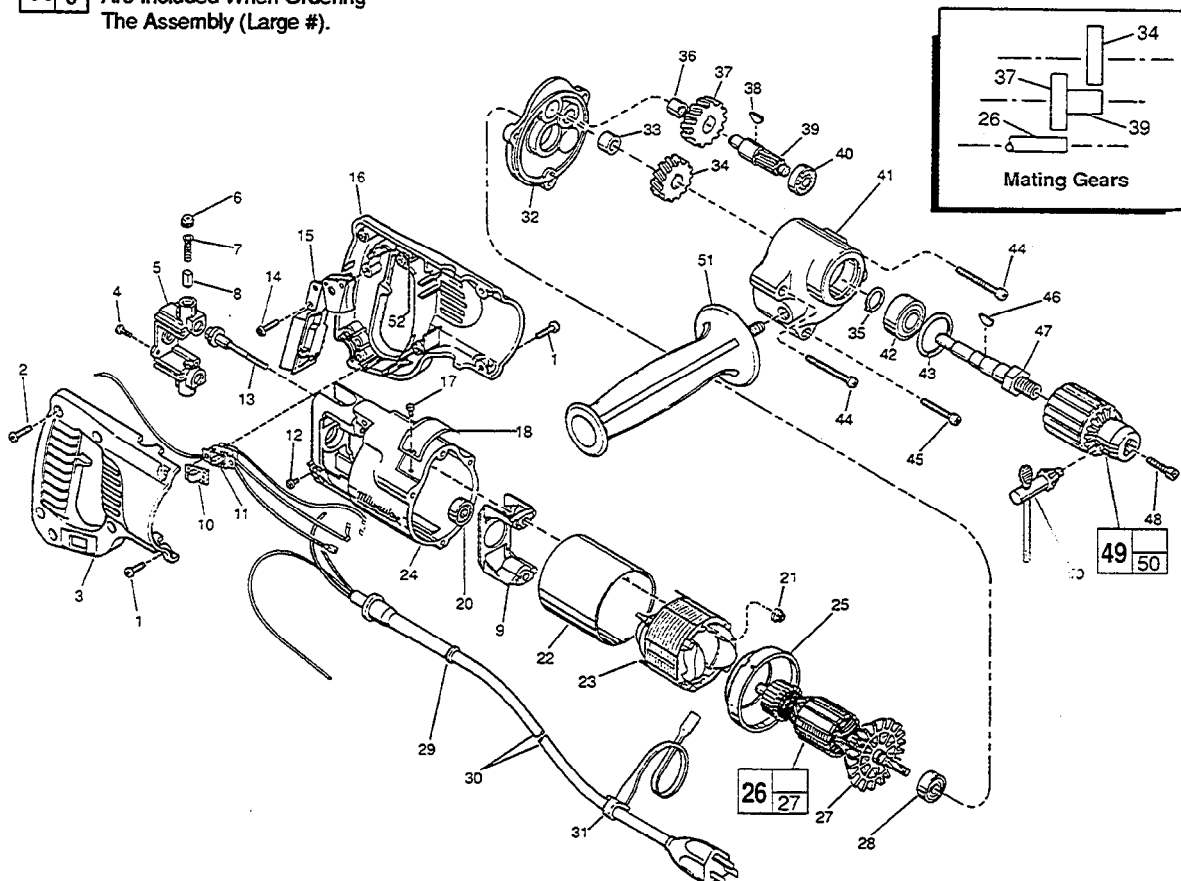


FIG.	PART NO.	DESCRIPTION OF PART	NO. REQ.
★ 1	06-82-5316	8-32 x 1/2" St. Pan Hd. Taptite T-20	(4)
2	06-82-7270	8-16 x 5/8" St. Pan Hd. Plastite T-20	(5)
3	31-44-1651	Right Handle Half	(1)
★ 4	06-95-0075	6-32 x 3/8" Truss Hd. Taptite T-10	(2)
5	22-22-1380	Brush Holder Assembly	(1)
6	23-44-0190	Brush Retaining Cap	(2)
7	23-52-0160	Brush Spring	(2)
8	22-16-0275	Carbon Brush	(2)
★ 9	31-55-0190	Coil Shield	(1)
10	31-12-0196	Switch Cap	(1)
11	23-66-1863	Reversing Switch Assembly	(1)
★ 12	06-95-5150	6-32 x 1/4" Hex Hd. Taptite Sems	(1)
★ 13	06-81-1060	8-32 x 2-1/4" Field Bolt	(2)
14	06-82-7270	8-16 x 5/8" St. Pan Hd. Plastite T-20	(1)
15	23-66-0167	On-Off Switch	(1)
16	31-44-1656	Left Handle Half	(1)
17	06-72-1720	Nameplate Rivet	(2)
18	12-99-1750	Service Nameplate	(1)
20	02-04-0845	Ball Bearing	(1)
★ 21	06-57-2975	8-32 Flexlock Hex Nut	(2)
★ 22	23-16-0456	Field Insulator	(1)
23	18-31-0200	120 Volt Field - Auto Assembly	(1)
★ 24	28-50-6220	Motor Housing	(1)
25	31-05-0050	Baffle	(1)
26	16-30-0325	120 Volt Armature	(1)
27	22-84-0531	Fan Assembly	(1)
28	02-04-0911	Ball Bearing	(1)
29	44-76-0210	Cord Protector	(1)

FIG.	PART NO.	DESCRIPTION OF PART	NO. REQ.
30	22-64-3190	Cord Set	(1)
31	48-66-4040	Key Holder	(1)
32	28-28-0601	Diaphragm	(1)
33	02-50-2440	Needle Bearing	(1)
34	32-75-1601	Spindle Gear	(1)
35	34-60-1200	Retaining Ring	(1)
36	02-50-1640	Needle Bearing	(1)
37	32-40-1241	Intermediate Gear	(1)
38	06-42-0800	Woodruff Key	(1)
39	36-66-2002	Intermediate Shaft	(1)
40	02-04-0640	Ball Bearing	(1)
41	28-14-1910	Gear Case	(1)
42	02-04-1536	Ball Bearing	(1)
43	34-80-2500	Retaining Ring	(1)
★ 44	06-82-5502	8-32 x 2-1/4" St. Pan Hd. Taptite T-20	(2)
★ 45	06-82-5404	8-32 x 1-3/8" St. Pan Hd. Taptite T-20	(1)
46	06-42-1600	Woodruff Key	(1)
47	38-50-5470	Spindle	(1)
48	06-75-3150	1/4-20 x 1" L.H. Skt. Cap Screw	(1)
49	48-66-1360	1/2" Chuck	(1)
50	48-66-3280	Chuck Key	(1)
51	43-62-0875	Side Handle	(1)
★ 52	14-46-1001	Foam Slug Kit-(10 Slugs)	(1)

FIG. LUBRICATION

41 3-1/4 Oz. Type "A" Grease, 49-08-0800.

MILWAUKEE ELECTRIC TOOL CORPORATION
13135 W. LISBON RD., BROOKFIELD, WI 53005