



**BOSCH**

# Demolition Hammer

11316EVS | 3 611 C16 810

---

## Table of Content

Spare parts list.....	2
Illustration - Type.....	5

# Demolition Hammer | 11316EVS | 3 611 C16 810

## Spare parts list

Item	Part Number	Description	Illustration
1	1 615 108 091	Motor Housing BLUE	1
2	1 619 P15 174	Field	1
4	1 617 200 048	Switch	1
4/10	2 910 011 088	Socket head cap screw DIN 84-AM3,5x12-5.8	1
5	1 614 460 057	Power supply cord USA/CDN 4,15m 2 x 2,08mm SJ 14/2	1
6	1 610 703 053	Grommet Ø9,7-Ø12x89 MM	1
7	1 601 302 019	Fastening Clamp	1
9	1 619 P16 320	Manufacturer's nameplate	1
13	2 610 909 310	groove ball bearing	1
14	1 610 910 096	Needle-Roller Bearing	1
15	1 616 610 083	Fan	1
16	1 610 499 022	Ratchet Sleeve	1
17	1 619 P17 466	Retaining snap ring	1
18	1 610 119 010	Spring retaining ring	1
19	1 619 P13 963	Clamping-Flange	1
20	1 619 P13 964	Toolholder	1
21	1 610 508 025	Protective Cap	1
22	1 610 499 023	Protection Sleeve	1
23	1 610 521 011	Stop Sleeve	1
25	1 612 300 025	Stopping Device	1
26	1 619 P16 141	Indexing Disk	1
27	2 910 151 246	Hex Socket Head Cap Screw DIN 912-M8x30-10.9	1
28	1 614 621 002	Compression Spring	1
29	1 614 621 003	Compression Spring	1
30	1 610 210 147	O-Ring 79,5x2,65 MM	1
31	1 610 290 026	Damping Ring	1
34	1 610 390 029	Spacer Tube	1
35	1 619 P13 967	Hammer Pipe	1
36	1 610 210 127	O-Ring 64,0x2,5 MM	1
37	1 610 210 128	O-Ring 35,0x3,0 MM	1
38	1 615 190 093	Covering hood	1
39	1 610 283 030	Rotary shaft lip seal A ,Ø32x42x7x6 MM DIN 3760-	1
41	1 618 710 071	Striker Pin	1

## Spare parts list

Item	Part Number	Description	Illustration
43	1 615 808 083	Bearing cover BLUE	1
54	1 610 190 019	Control Disc	1
55	1 610 420 005	Control Bushing	1
56	1 618 700 064	Hammer Piston	1
57	1 618 710 062	Striker	1
70	1 612 001 033	Connecting Rod	1
71	1 613 101 006	Straight Pin	1
72	1 600 A02 7H7	Eccentric Cog Wheel	1
75	1 615 132 082	Handle BLACK	1
76	1 612 026 049	Control Lever	1
77	1 612 026 048	Shift Plate GRAY	1
80	1 607 233 5CW	Speed governor 115V	1
82	1 615 510 000	Light Conductor	1
103	1 610 210 122	O-Ring 30,0x5,0 MM	1
104	1 610 210 123	O-Ring 22,0x11,0 MM	1
111	3 610 501 500	Bushing	1
112	3 613 461 500	Threaded Ring	1
113	1 610 009 007	Spacer	1
114	1 610 210 139	O-Ring 30,0x2,5 MM	1
115	1 610 508 027	Protective Cap BLACK	1
123	1 610 913 013	Needle-Roller Assembly	1
124	1 610 101 608	Thrust Bearing Disc	1
126	2 603 490 022	Screw 4x16	1
127	2 914 551 117	Microencapsulated Screw 5x12-8.8 DIN 912-M	1
129	1 613 433 001	Screw and washer assembly 6,3x32	1
131	1 619 P16 321	Warning Plate	1
136	1 613 490 029	Torx Oval-Head Screw M6x30	1
138	1 610 210 130	O-Ring 32,0x2,5 MM	1
139	1 610 108 020	Felt Washer	1
140	1 613 435 010	Torx Oval-Head Screw 5,5x25	1
141	1 610 290 028	Rotary shaft lip seal	1
142	1 610 300 063	Bushing	1
143	2 916 540 017	Retaining ring DIN 7993 A 30	1
144	1 610 102 029	Supporting Disc	1

## Spare parts list

Item	Part Number	Description	Illustration
180	1 611 110 855	Sticker	1
803	1 619 P17 205	Armature	1
808	1 619 P16 319	Nameplate	1
823	1 617 000 403	Needle-Roller Assembly	1
824	1 617 000 240	Ball     DIN 5401-6,5MM-III-ST	1
840	1 617 000 969	Impact Mechanism Housing	1
842	1 600 A00 5AF	Brush Holder	1
842/020	1 614 336 017	Brush Guide	1
842/030	1 614 652 004	Spiral Spring	1
842/050	1 607 000 481	Carbon-Brush Set     10 x 1 617 014 126	1
842/050	1 617 014 126	Carbon-Brush Set	1
842/080	2 910 611 012	Tapping Screw     DIN 7981-ST3,5x16-C-H	1
845	1 617 000 418	Housing Cover	1
895	3 613 344 500	Oil Return Ring	1
897	1 617 000 189	Wear and Tear Part Set	1
898	1 617 000 190	Wear and Tear Part Set	1
84	1 602 025 08D	Auxiliary Handle	2
86	2 911 021 267	Hex Screw	2
87	1 611 316 010	Clamping Band	2
88	1 619 P16 922	Star Knob	2
89	1 600 A00 748	Clamping Piece	2
661	1 615 430 010	Grease Tube     30 ML	2
884	1 602 025 08E	Auxiliary Handle	2
892	1 615 430 014	Grease Tube     45 ML	2

Illustration - Type - E

3 611 C16 8F0  
Issue  
Stand | 18-08-07 **Fig./Abb. 1**

- = Pos. 897 1 617 000 189 ohne Fetttube  
1 617 000 189 without grease tube
  - = Pos. 898 1 617 000 190 mit 2 Fettuben à 45ml  
1 617 000 190 with 2 x 45ml grease tubes
- Bitte Schmierhinweise beachten!  
Please note lubrication instructions!

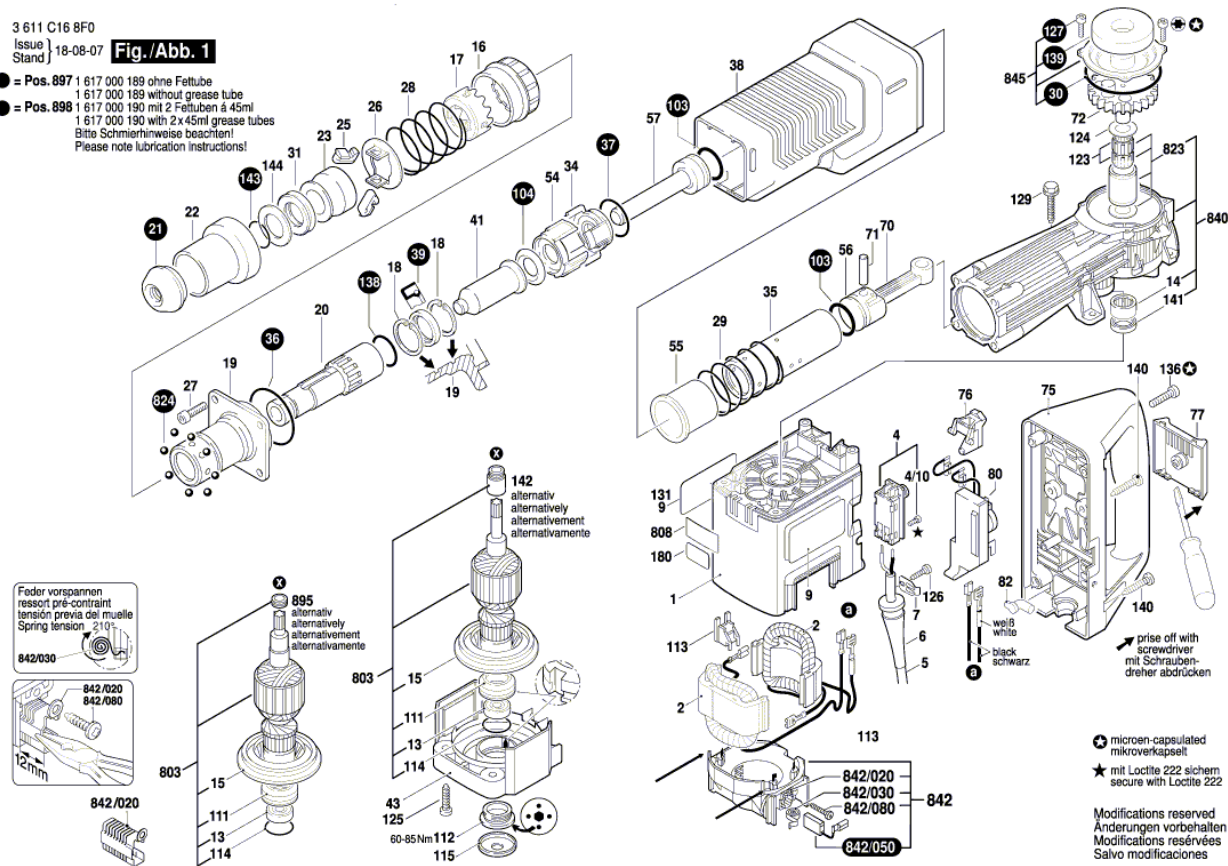
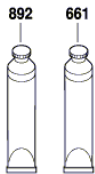
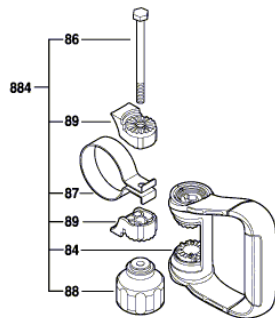


Illustration - Type - E

3 611 C16 8F0  
 Issue | 18-08-08  
 Stand | **Fig./Abb. 2**



Änderungen vorbehalten  
 Modifications reserved  
 Modifications réservées  
 Salvo modificaciones

