

Rotary Hammer - 3 611 J03 R10 - 11536 C

www.powertools-aftersaleservice.com



BOSCH

Item	Part Number	Description	Illustration	Price	Quantity	Price Group
1	1 615 108 17B	Housing Section	1	-,-	1	33
3	1 610 499 067	Centering Sleeve	1	-,-	1	21
4	1 607 233 316	Electronics Module	1	-,-	1	48
5	1 610 591 044	Air Path BLACK	1	-,-	1	14
7	1 611 110 Z32	Sticker	1	-,-	1	13
9	1 611 110 Z22	Manufacturer's nameplate	1	-,-	1	13
10	1 611 110 Z18	Manufacturer's nameplate	1	-,-	1	13
11	1 611 110 Z31	Warning Plate	1	-,-	1	13
16	1 610 102 637	Supporting Disc 12x38x0,5	1	-,-	1	11
17	1 611 015 060	Sealing Frame	1	-,-	1	19
18	1 610 290 116	Seal Ring	1	-,-	1	16
23	1 616 317 084	Cylindrical Gear	1	-,-	1	28
31	1 614 601 053	Retaining ring	1	-,-	1	10
32	1 612 026 114	Switch Button	1	-,-	1	10
34	1 610 508 051	Rubber Bushing	1	-,-	1	16
37	1 610 551 008	Holding Plate	1	-,-	1	11
39	1 604 601 02U	Retaining ring	1	-,-	1	10
40	1 613 100 032	Straight Pin	1	-,-	2	10
41	1 610 102 072	Ratchet Disc	1	-,-	1	18
43	1 610 499 080	Protection Sleeve	1	-,-	1	12
44	1 610 508 052	Protective Cap	1	-,-	1	10
46	1 614 630 003	Compression Spring	1	-,-	1	12
47	1 610 905 039	groove ball bearing	1	-,-	1	18
48	1 614 601 054	Retaining ring	1	-,-	1	11
50	1 600 A00 FL3	Thrust Ring	1	-,-	1	14
51	1 613 231 014	Shift Plate	1	-,-	1	16
52	1 614 690 005	Coiled Spring	1	-,-	1	11
53	1 619 P00 828	Pressure Disc	1	-,-	1	10
54	1 613 100 033	Guide Rod	1	-,-	1	11
59	1 610 102 045	Friction Washer 1,0 MM THICK	1	-,-	1	10
60	1 610 190 054	Support Disc	1	-,-	1	11
70	1 903 230 013	Ball DIN 5401-Ø7MM-III-ST	1	-,-	1	11
71	1 613 435 036	Torx Oval-Head Screw 35x16	1	-,-	17	10

Item	Part Number	Description	Illustration	Price	Quantity	Price Group
72	2 603 490 017	Torx Oval-Head Screw 3x10	1	-,-	4	10
73	1 603 435 074	Torx Oval-Head Screw	1	-,-	1	10
80	1 610 415 002	Bellows	1	-,-	1	24
83	2 603 100 056	Damping rubber	1	-,-	1	11
84	1 613 231 023	Switch Slide	1	-,-	1	11
87	1 614 601 077	Spring retaining ring	1	-,-	1	11
120	1 612 025 078	Auxiliary Handle	2	-,-	1	30
326/26	1 618 700 083	Hammer Piston	1	-,-	1	24
326/29	1 613 100 034	Piston Pin	1	-,-	1	14
326/38	1 610 100 016	Guide Disc	1	-,-	2	11
326/56	1 610 210 244	O-Ring 13,0x3,0 MM	1	-,-	1	12
333/32/1	1 610 210 185	O-Ring 16,5x2,0 MM	1	-,-	1	10
651	2 609 005 615	Depth-Gauge	2	-,-	1	16
653	2 607 336 007	Accumulator Battery 36V, 1,3Ah, LI	1	-,-	1	55
654	2 607 225 905	Fast Charger USA/CND GAL 3680 CV 120/14,4-36V	2	-,-	1	47
802	1 617 000 664	DC motor 36V	1	-,-	1	49
808	1 601 11A 3H9	Nameplate	1	-,-	1	13
812	1 617 000 665	Planetary Gear Train	1	-,-	1	27
820	1 617 000 666	Intermediate Flange	1	-,-	1	35
821	1 617 000 667	Hammer Pipe	1	-,-	1	41
824	1 607 000 D10	Jack Shaft	1	-,-	1	41
827	1 617 000 669	Striker	1	-,-	1	28
828	1 613 124 084	Striker Pin	1	-,-	1	16
833	1 617 000 670	Clamp Handle	1	-,-	1	23
844	1 617 000 6D3	Protection Sleeve	1	-,-	1	23
867	1 617 000 671	Compression Spring	1	-,-	1	19
888	1 617 000 672	Push-Button	1	-,-	1	14
891	1 609 280 425	Contact retainer	1	-,-	1	27

Illustration - Type E

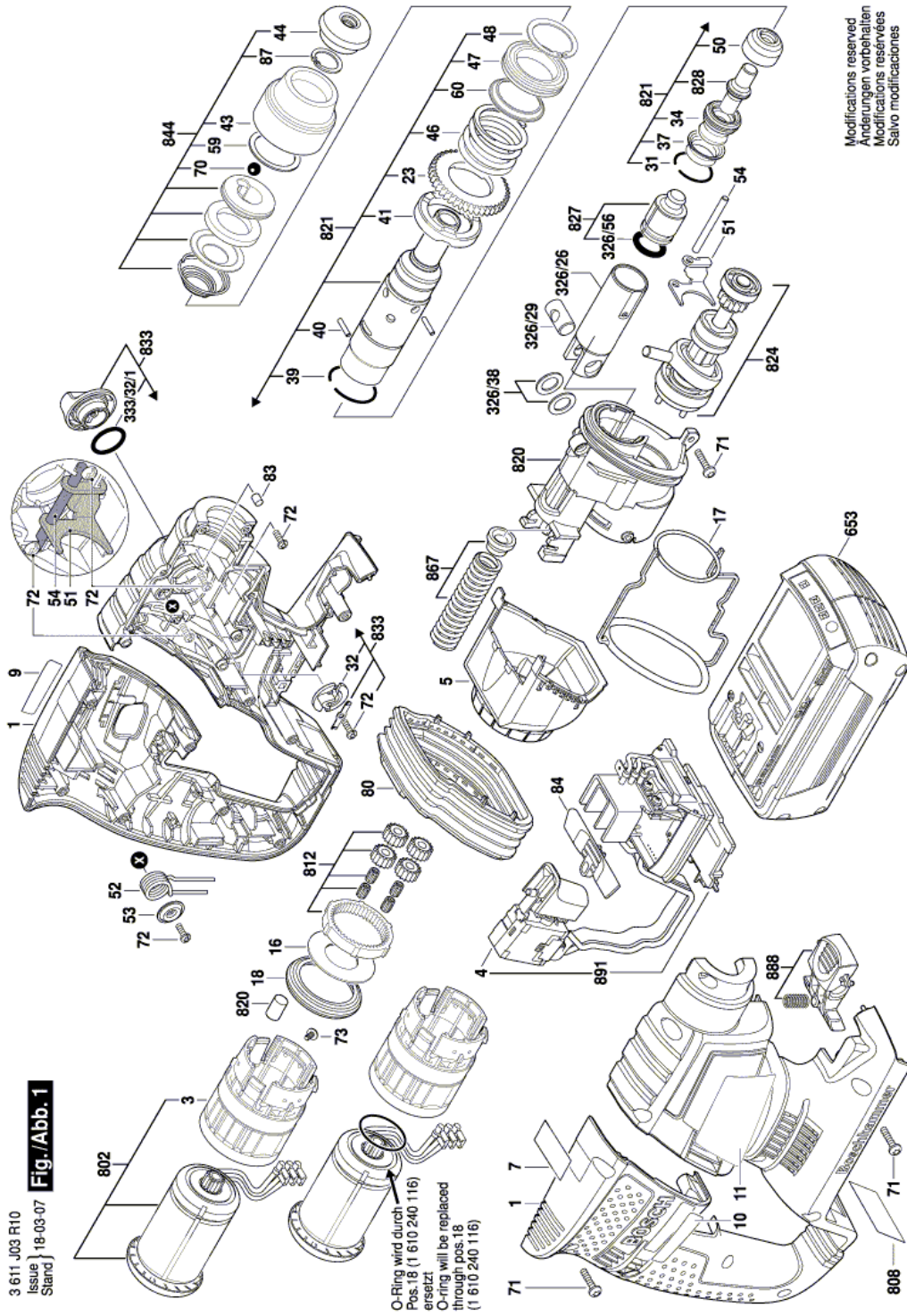
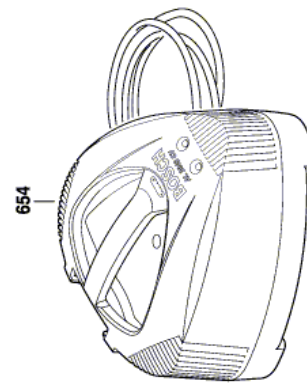
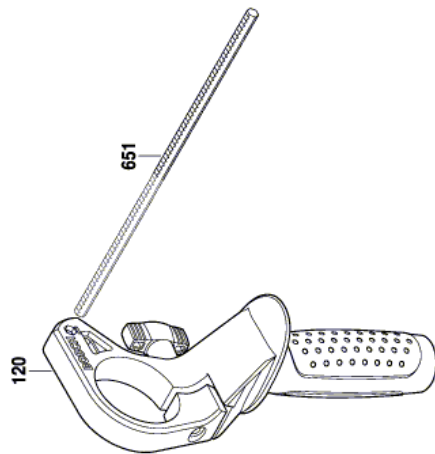


Illustration - Type E

3 611 J03 R10
Issue 12-07-02
Stand **Fig./Abb. 2**



Modifications reserved
Änderungen vorbehalten
Modificacions reservées
Salvo modificaciones

Information subject to change without further notice.