



SERVICE PARTS LIST

BUL. 54-08-2223

1/2" ELECTRIC DRILL

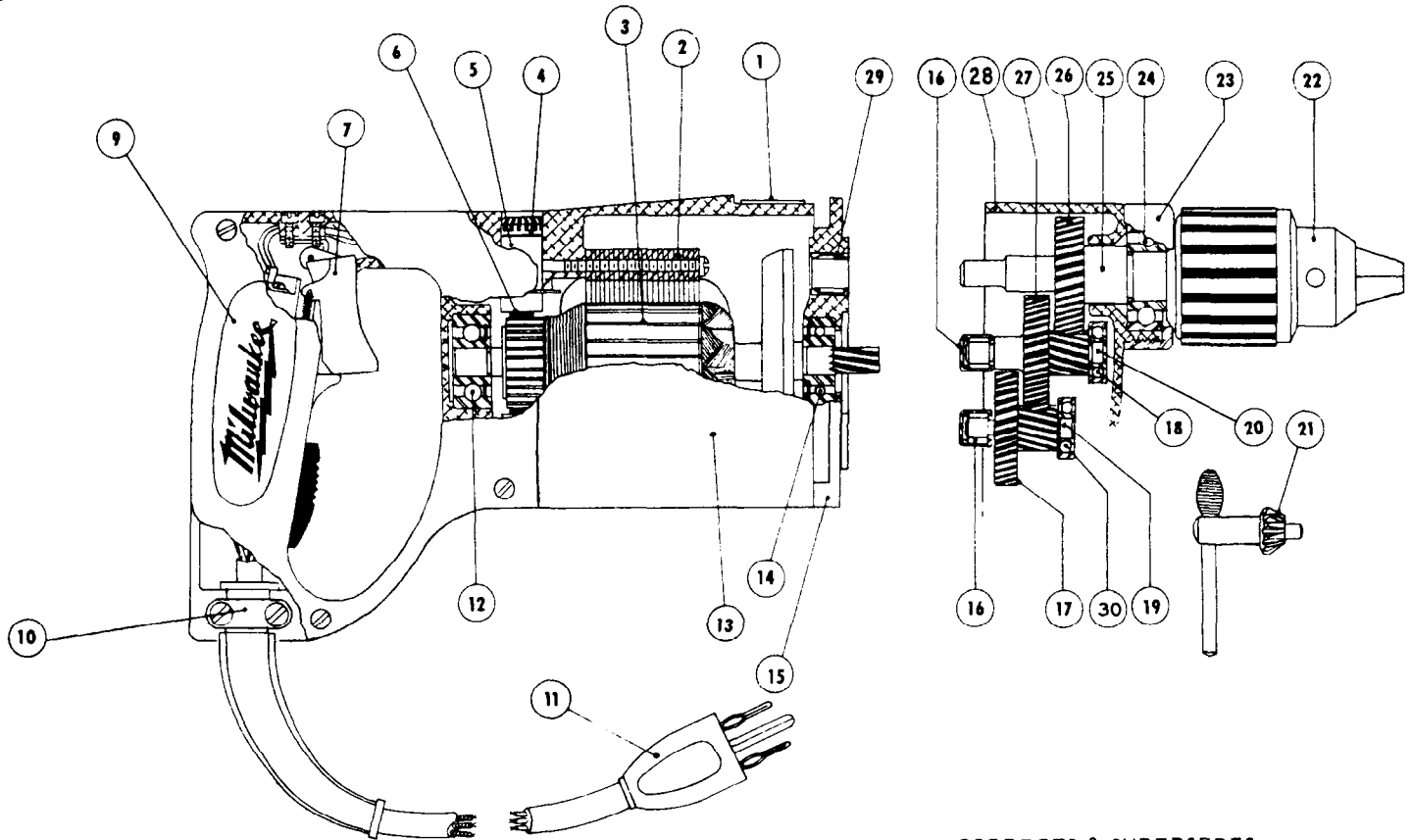
REVISED BUL 6134-4 DATE Feb. '68

Catalog No. 1200-1

Starting Serial No. 134-4990

WIRING INSTR.

Both Model and Serial No. must be furnished to obtain correct parts.



230 V Motor
16-46-1190 Armature
18-46-1141 Field

CORRECTS & SUPERSEDES
SERVICE BULLETIN 6134-4
DATED 11/9/65

ILLUSTRATED PARTS

FIG.	PART NO.	DESCRIPTION OF PART	NO.REQ.	FIG.	PART NO.	DESCRIPTION OF PART	NO.REQ.
1	12-98-0800	Name Plate		16	02-50-1640	Ball Bearing	
2	18-42-1141	Field Assembly		17	32-40-1241	Intermediate Gear	
3	16-42-1210	Armature Assembly		★ 18	02-04-0820	Ball Bearing	
4	23-44-0060	Brush Retaining Screw	(2)	19	36-66-2801	Intermediate Pinion Shaft	
5	22-22-0080	Brush Holder Assembly	(2)	★ 20	36-66-3951	Intermediate Pinion Shaft	
6	22-18-0100	Carbon Brush Assembly	(2)	21	48-66-3280	Chuck Key	
7	23-66-0485	Switch		22	48-66-1360	Chuck (1/2-20 Thread 3-Jaw)	
9	28-20-3601	Handle Cover		23	42-52-0071	Bearing Cap	
10	28-17-0400	Cord Clamp Strap		24	02-04-1560	Ball Bearing	
11	22-64-0170	Cord Set		25	38-50-3651	Spindle	
12	02-04-0970	Ball Bearing (Comm. End)		★ 26	32-75-2641	Spindle Gear	
13	28-50-4488	Motor Housing		27	32-75-2041	Spindle Gear	
14	02-04-0940	Ball Bearing (Pinion End)		28	28-14-1261	Gear Case	
15	28-28-0661	Diaphragm		29	02-50-2110	Needle Bearing	
				★ 30	02-04-0640	Ball Bearing	

MISCELLANEOUS PARTS NOT SHOWN

PART NO.	DESCRIPTION OF PART	NO.REQ.	PART NO.	DESCRIPTION OF PART	NO.REQ.
43-62-0160	Handle		06-81-6150	8-32x1/2" Fil. Hd. Sems Cord Clamp Strap Scr (2)	
44-90-0130	Handle Ring		06-81-8625	6-32x1/4" Rd. Hd. Ground Screw (Brass)	
06-42-0800	Woodruff Keys	(3)	06-81-6350	8-32 x 1 Fil. Hd. Sems Gear Case Screws	
06-81-8400	4-40 x 1/4 Rd. Hd. Name Plate Screws	(2)	06-81-6650	8-32x1-3/4 Fil. Hd. Sems Gear Case Screws (2)	
06-81-5790	6-32 x 1/4 Fil. Hd. Sw. Mtg. Sems	(2)	06-81-6600	8-32 x 1-3/4 Fil. Hd. Sems Field Screws (2)	
23-86-0110	Brush Holder Insul. Washer	(2)	06-83-2650	1/4-20 x 3/8 Hd'less Brush Holder Set Scr. (2)	
06-75-3150	1/4-20 x 1 L.H. Allen Hd. Rev. Chuck Scr.		06-81-3700	8-32 x 7/8 Oval Hd. Handle Cover Screws (4)	
48-03-0010	Attachment Plug Adaptor		45-36-0210	Gear Spacer	
			*23-16-0340	Switch Insulator	