



# Operating Instructions and Parts Manual TS Series 2-speed Electric Chain Hoists

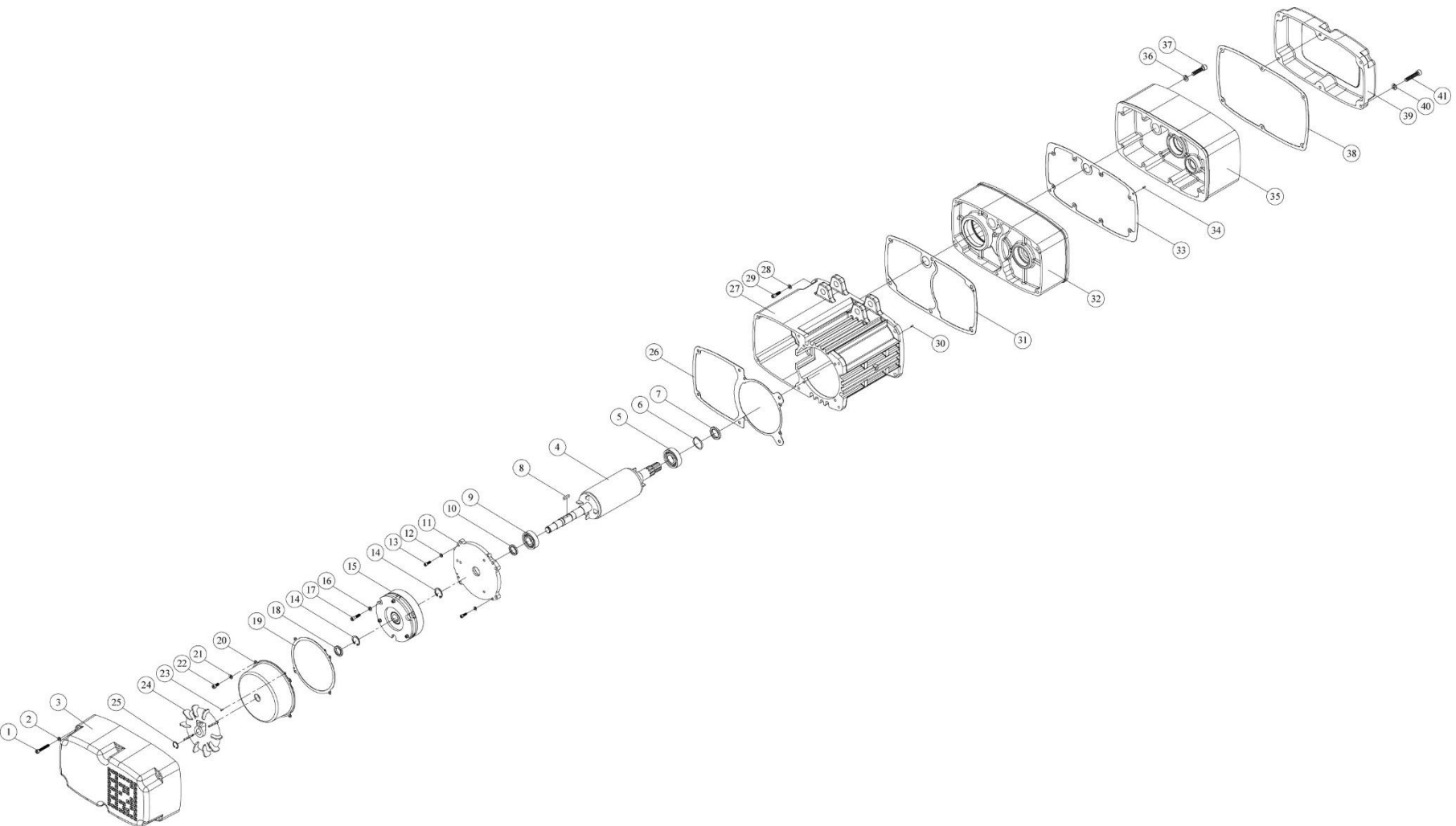


single fall model shown

**JET**  
427 New Sanford Road  
LaVergne, Tennessee 37086  
Ph.: 800-274-6848  
www.jettools.com

**Document No. M-140233**  
Edition 2 12/2020  
Copyright © 2020 JET

21.1.1 TS050, TS100 Motor Assembly and Housing – Exploded View

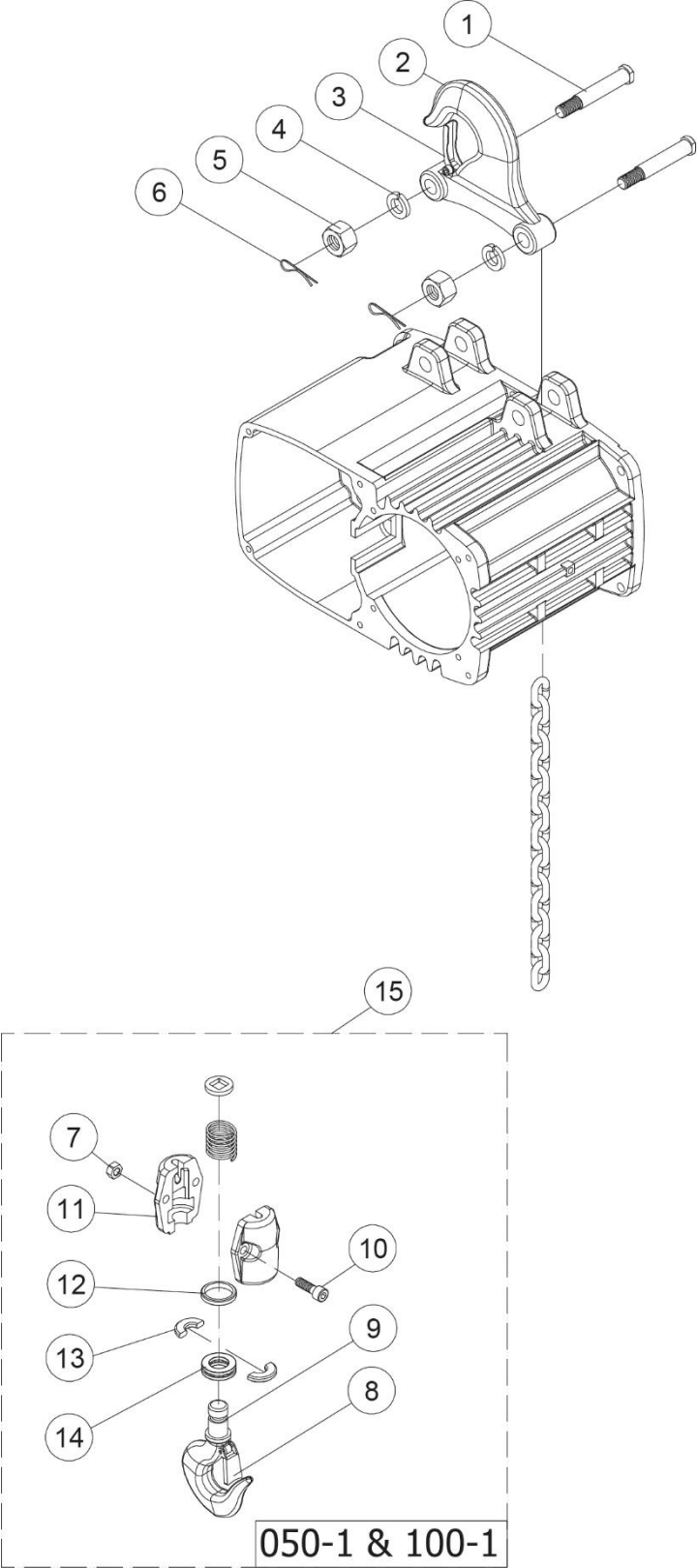


## 21.1.2 TS050,TS100 Motor Assembly and Housing – Parts List

Index No.	Part No.	Description	Size	Qty
1	TS-1502101	Socket Hd Cap Screw	M5x0.8x45	6
	TS-2143141		M6x1.0x75	6
2	TS-2361051	Spring Washer	M5	6
	TS-2361061		M6	6
3	TS050-A03	End Cover		1
	TS100-A03			1
4	TS050-A04	Motor Rotor		1
	TS100-A04			1
5	BB-62042RS	Bearing	62042RS	1
	BB-6205ZZ		6205ZZ	1
6	TS050-A06	Wave Washer	6205	1
7	TS050-A07	Oil Seal	Ø20xØ35x8t	1
	TS100-A07		Ø25xØ45x8t	1
8	6293356	Key, Dbl Rd Hd	t6x6x20L	1
9	BB-62042RS	Bearing	62042RS	1
	BB-6304ZZ		6304ZZ	1
10	TS050-A07	Oil Seal	Ø20xØ35x8t	1
11	TS050-A11	Motor End Cover		1
	TS100-A11			1
12	TS-2361051	Spring Washer	M5	4
	TS-2361061		M6	4
13	TS-1502051	Socket Hd Cap Screw	M5x0.8x20	4
	TS-1503061		M6x1.0x25	4
14	1017067	C-Retaining Ring, Ext	S-19	2
15	TS050-A15	Brake Assembly	SNT-102-075	1
	TS100-A15		TSB-124-150	1
16	TS-2361061	Spring Washer	M6	3
17	TS-1503081	Socket Hd Cap Screw	M6x1.0x35	3
18	TS050-A18	Oil Seal	VA18	1
19	TS050-A19	Brake End Cover Gasket		1
	TS100-A19			1
20	TS050-A20	Brake End Cover		1
	TS100-A20			1
21	TS-2361051	Spring Washer	M5	4
22	TS-1502021	Socket Hd Cap Screw	M5x0.8x10	4
23	TS050-A23	Pin	Ø3x10	2
24	TS050-A24	Fan	Ø124xØ14	1
	TS100-A24		Ø138xØ16	1
25	F006042	C-Retaining Ring, Ext.	S-14	1
	F006044		S-16	1
26	TS050-A26	End Cover Gasket		1
	TS100-A26			1
27	TS050-A27	Motor Stator Assembly	3~230V,60Hz,1.1/0.28kW	1
	TS100-A27		3~230V,60Hz,1.5/0.37kW	1
	TS050-A27M	Motor Stator Assembly	3~460V,60Hz,1.1/0.28kW	1
	TS100-A27M		3~460V,60Hz,1.5/0.37kW	1
28	TS-2361081	Spring Washer	M8	6
29	TS-1504071	Hex. Bolt	M8x1.25x35	6
	TS-1504061		M8x1.25x30	6
30	TS050-A30	Pin	Ø5x12	2
31	TS050-A31	Motor Gasket		1
	TS100-A31			1
32	TS050-A32	Gearbox		1
	TS100-A32			1
33	TS050-A33	Gearbox Gasket		1
	TS100-A33			1
34	TS050-A30	Pin	Ø5x12	2
35	TS050-A35	Gearbox Cover		1
	TS100-A35			1

Index No.	Part No.	Description	Size	Qty
36	TS-2361061	Spring Washer	M6	6
37	TS-1503121	Socket Hd Cap Screw	M6x1.0x55	6
	TS-2236801		M6x1.0x85	8
38	TS050-A38	Electric Cover Gasket		1
	TS100-A38			1
39	TS050-A39	Electric Cover		1
	TS100-A39			1
40	TS-2361061	Spring Washer	M6	8
41	TS-1503091	Socket Hd Cap Screw	M6x1.0x40	8
	TS-1503081		M6x1.0x35	6

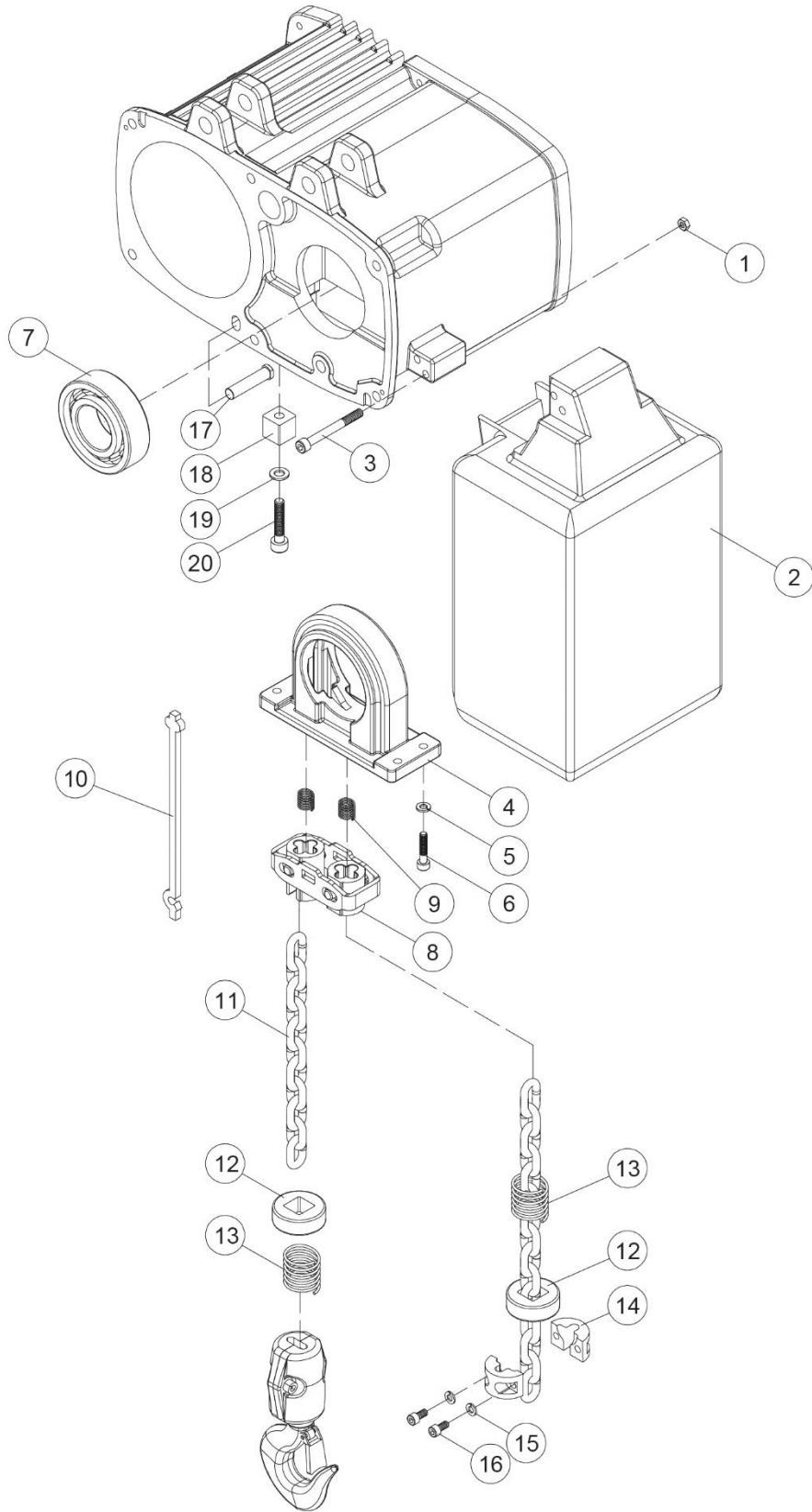
21.2.1 TS050, TS100 Hook Assembly – Exploded View



## 21.2.2 TS050, TS100 Hook Assembly – Parts List

Index No.	Part No.	Description	Size	Qty
1	TS050-B01	Lock Bolt	Ø14x83	2
2	TS050-B02	Top Hook Assembly		1
	TS100-B02			1
3	TS050-B03	Safety Latch Assembly		1
4	TS-2361121	Spring Washer	M12	2
5	TS-1540081	Hex Nut	M12x1.75	2
6	TS050-B06	Cotter Pin	Ø3x30	2
7	TS-1541031	Nylon Nut	M8x1.25	2
	TS-1541021		M6x1.0	2
8	TS050-B08	Safety Latch Assembly		1
	TS100-B08			1
9	TS050-B09	Bottom Hook Assembly		1
	TS100-B09			1
10	TS-1504061	Socket Hd Cap Screw	M8x1.25x30	2
11	TS050-B11	Bottom Block Cover		1
	TS100-B11			1
12	TS050-B12	End Spacer		1
13	TS050-B13	Half Spacer		2
14	BB-2904	Thrust Bearing	2904	1
15	TS050-B15	Bottom Hook Complete Assembly		1
	TS100-B15			1

### 21.3.1 TS050, TS100 Load Chain – Exploded View

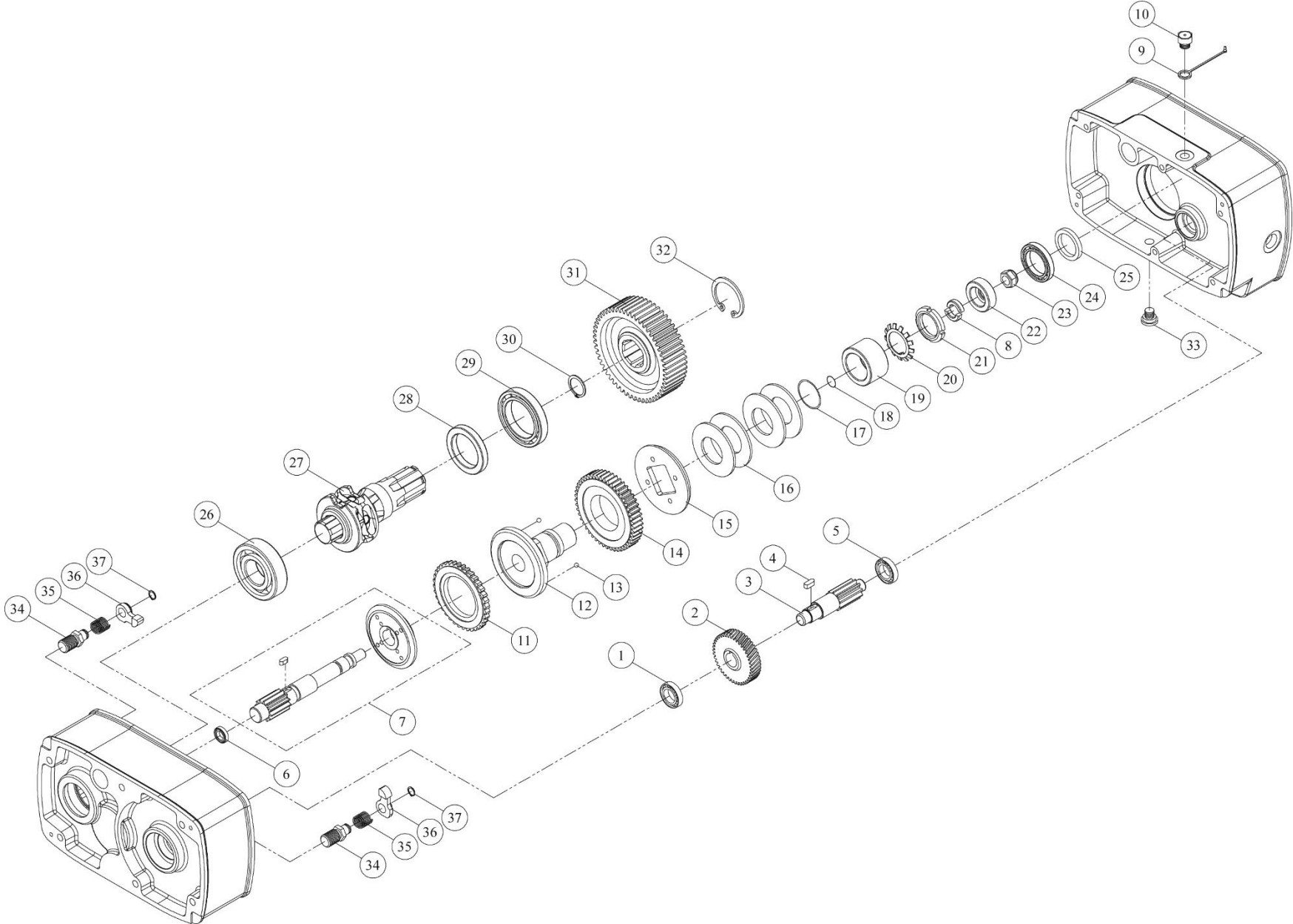


### 21.3.2 TS050, TS100 Load Chain – Parts List

Index No.	Part No.	Description	Size	Qty
1	TS-1541011	Nylon Nut	M5	2
	TS-1541021		M6	2
2		Chain Container (see chart)		1
3	TS-2235801	Socket Hd Cap Screw	M5x0.8x80	2
	TS-2236801		M6x1.0x80	2
4	TS050-C04	Chain Regulator		1
	TS100-C04			1
5	TS-2361061	Spring Washer	M6	4
6	TS-1503041	Socket Hd Cap Screw	M6x1.0x16	4
7	BB-6303ZZ	Bearing	6306ZZ	1
8	TS050-C08	Guide Tube Ass'y		1
	TS100-C08			1
9	TS050-C09	Spring		2
	TS100-C09			2
10	TS050-C10	Chain Puller	Ø6.3x19.1mm	1
	TS100-C10		Ø7.1x20.2mm	1
11	LCHAIN-6X19	Load Chain	Ø6.3x19.1mm	per ft.
	LCHAIN-7X20		Ø7.1x20.2mm	per ft.
12	TS050-C12	Limit Stopper Ass'y		2
13	TS050-C13	Spring		2
14	TS050-C14	Chain Stopper		2
15	TS-2361061	Spring Washer	M6	2
16	TS-1503051	Socket Hd Cap Screw	M6x1.0x20	2
17	TS050-C17	Chain Connecting Pin	Ø14x50	1
	TS100-C17		Ø16x80	1
18	TS050-C18	Fixed Block		1
	TS100-C18			1
19	TS-2361051	Spring Washer	M5	1
	TS-2361061		M6	1
20	TS-1502051	Socket Hd Cap Screw	M5x0.8x20	1
	TS-1503041		M6x1.0x16	1



21.4.1 TS050, TS100 Gear Box – Exploded View

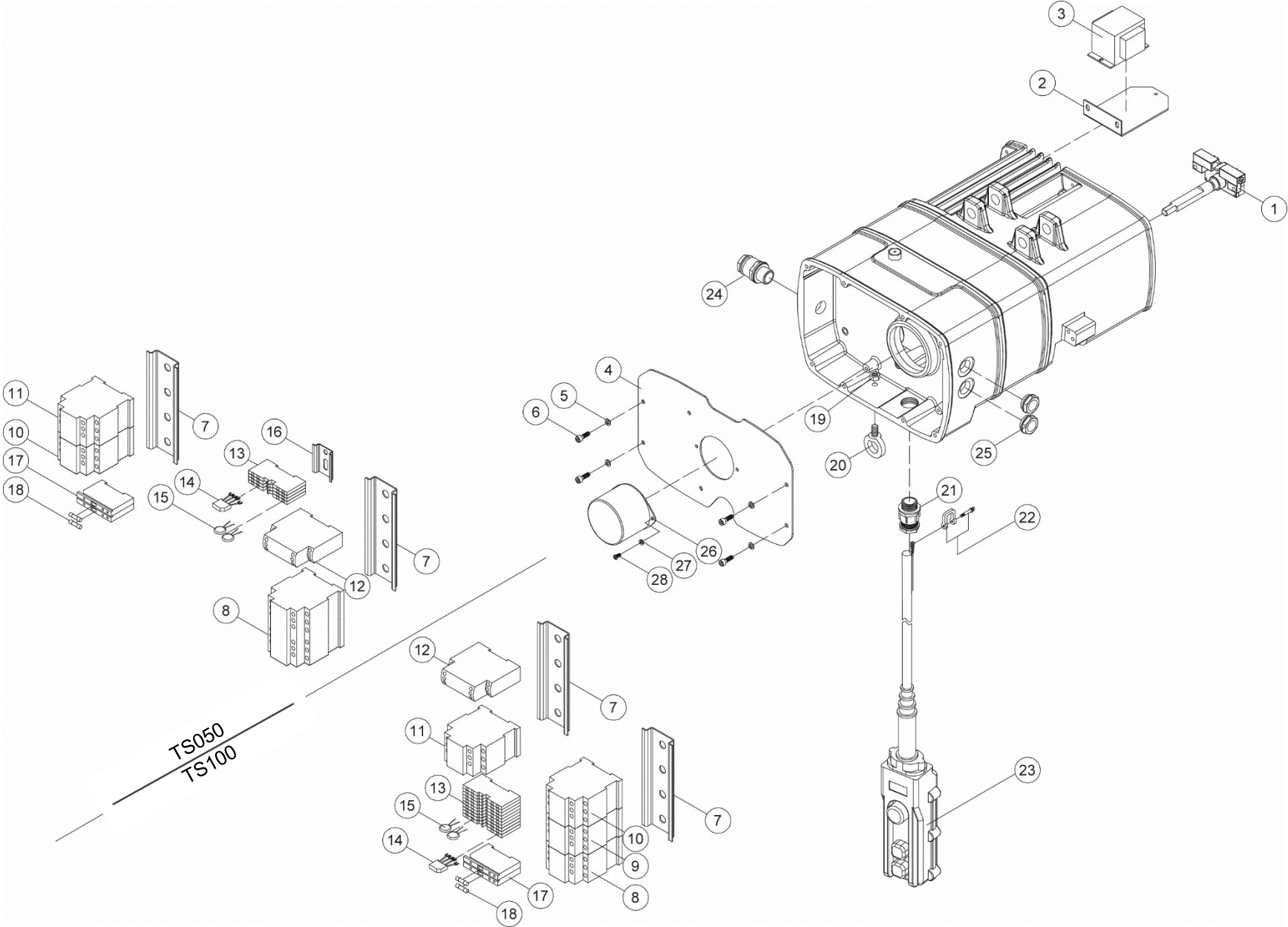


## 21.4.2 TS050, TS100 Gear Box – Parts List

Index No.	Part No.	Description	Size	Qty
1	BB-6002ZZ	Bearing	6002ZZ	1
	BB-6202	Bearing	6202	1
2	TS050-D02	2nd Gear	M1.25x50Tx14L	1
	TS100-D02	2nd Gear	M1.5x42Tx17L	1
3	TS050-D03	3rd Gear	M2x12Tx88L	1
	TS100-D03	3rd Gear	M2x10Tx105L	1
4	5512400	Key, Dbl Rd Hd	t6x6x12L	1
	3K00227	Key, Dbl Rd Hd	t6x6x15L	1
5	BB-6002ZZ	Bearing	6002ZZ	1
	BB-6202	Bearing	6202	1
6	BB-6204	Bearing	6204	1
	BB-6304	Bearing	6304	1
7	TS050-D07A	5th Gear Ass'y	M2x12T	1
		5th Gear Ass'y	M2x13T	1
	TS100-D07A	5th Gear Ass'y	M2.25x13T	1
		5th Gear Ass'y	M2.25x15T	1
8	TS050-D08	Load Brake Gear Spacer		2
	TS100-D08			2
9	TS050-D09	Breather Plug		1
10	TS050-D10	Hex. Oil Plug		1
11	TS050-D11	Ratchet Ass'y		1
	TS100-D11			1
12	TS050-D12	Brake Bushing		1
	TS100-D12			1
13	SB-6MM	Ball	Ø6	3
14	TS050-D14	4th Gear Ass'y	M2x49Tx18	1
	TS100-D14	4th Gear Ass'y	M2x54Tx21	1
15	TS050-D15	Brake Body	Ø90x7.6L	1
	TS100-D15	Brake Body	Ø101x7L	1
16	TS050-D16	Disc Spring	Ø70xØ35.5x3t	3
	TS100-D16	Disc Spring	Ø80xØ36x3t	4
17	TS050-D17	O-Ring	P-29	1
18	TS050-D18	O-Ring	P-14	1
	TS100-D18	O-Ring	P-18	1
19	TS050-D19	Disc Spring Bushing		1
	TS100-D19			1
20	TS050-D20	Spacer	AW06	1
	TS100-D20	Spacer	AW07	1
21	TS050-D21	Nut	KM6	1
	TS100-D21	Nut	KM7	1
22	TS050-D22	End Spacer	Ø40xØ14x13L	1
	TS100-D22	End Spacer	Ø45xØ14x13L	1
23	TS-2342121	Lock Nut	M12x1.75	1
24	TS050-D24	Bearing	6910ZZ	1
	BB-6912	Bearing	6912	1
25	TS050-D25	Oil Seal	Ø50xØ68x9t	1
	TS100-D25	Oil Seal	Ø60xØ80x8t	1
26	BB-6006ZZ	Bearing	6006ZZ	1
	BB-6306ZZ	Bearing	6306ZZ	1
27	TS050-D27	Load Sheave	Ø68.5x144L	1
	TS100-D27	Load Sheave	Ø73x158.5L	1
28	TS050-D28	Oil Seal	Ø35xØ50x8t	1
	TS100-D28	Oil Seal	Ø45xØ72x10t	1
29	BB-6006ZZ	Bearing	6006ZZ	1
	BB-6208	Bearing	6208	1
30	F006050	C-Retaining Ring, Ext	S-25	1
	F006096	C-Retaining Ring, Ext	S-38	1
31	TS050-D31	6th Gear	M2x43T	1
	TS100-D31	6th Gear	M2.25x54T	1
32	F006097	C-Retaining Ring, Int	R-55	1

<b>Index No.</b>	<b>Part No.</b>	<b>Description</b>	<b>Size</b>	<b>Qty</b>
	F006094	C-Retaining Ring, Int	R-80	1
33	TS050-D33	Lubricant Drain Bolt		1
34	TS050-D34	Ratchet Pawl Pin		2
	TS100-D34			1
35	TS050-D35	Ratchet Pawl Spring		2
	TS100-D35			1
36	TS050-D36	Ratchet Pawl		2
	TS100-D36			1
37	F006098	C-Retaining Ring, Ext	S-11	2

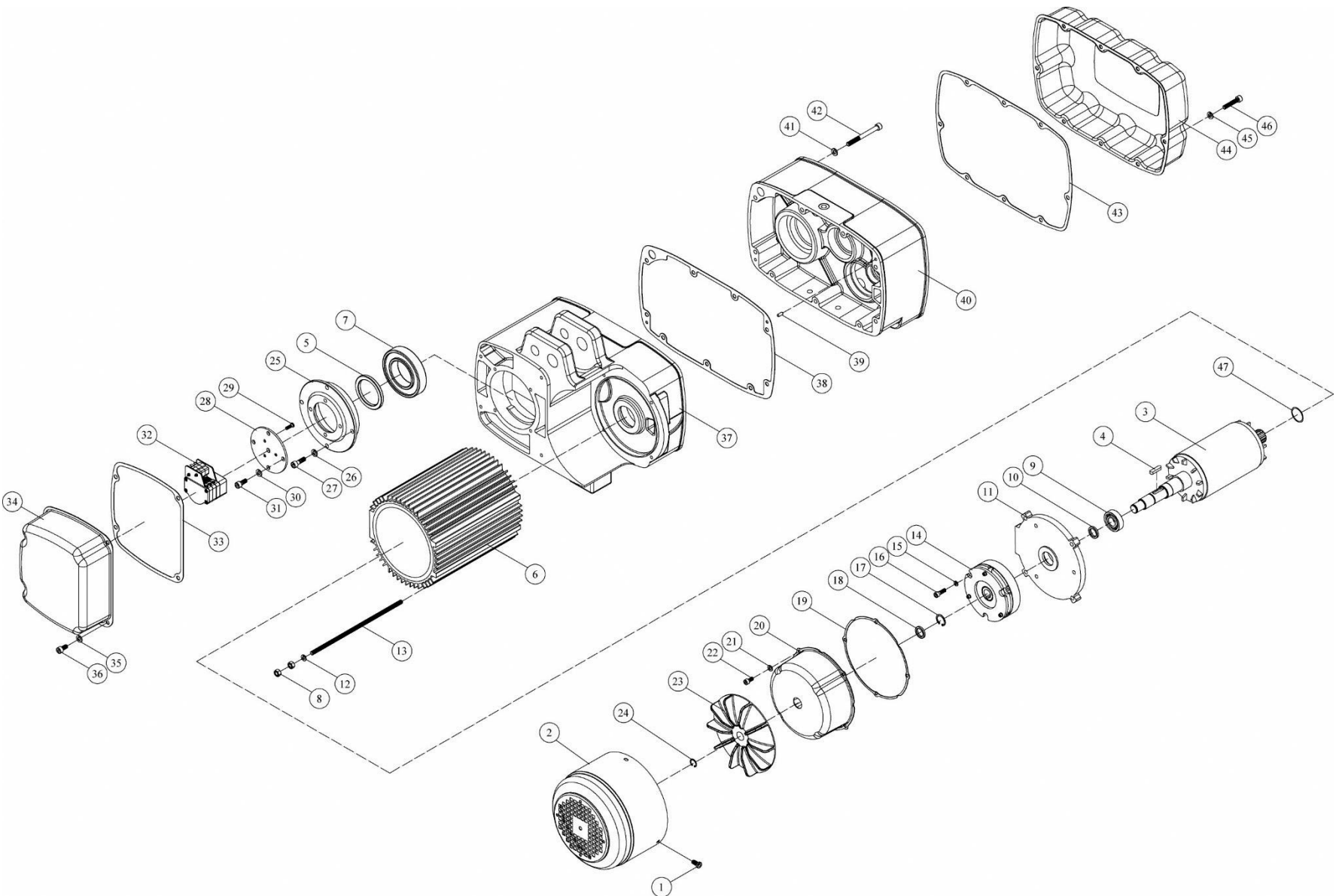
21.5.1 TS050, TS100 Electrical Assembly – Exploded View



## 21.5.2 TS050, TS100 Electrical Assembly – Parts List

Index No.	Part No.	Description	Size	Qty
1	TS050-E01	Upper & Lower Limit Switch		1
	TS100-E01			1
2	TS050-E02	Transformer Bracket		1
	TS100-E02			1
3	TS050-E03	Transformer	PS-116	1
	TS100-E03	Transformer	PS-16205N	1
4	TS050-E04	Electric Bracket		1
	TS100-E04			1
5	TS-2361051	Spring Washer	M5	4
6	TS-1502021	Socket Hd Cap Screw	M5x0.8x10L	4
7	TS050-E07	Contactora Rail		2
	TS100-E07			2
8	TS050-E08	Contactora	LC2-K09004-F7 110V 4A	1
	TS100-E08		LC1D12-F7 110V 3A1a 1b	1
9	TS100-E08	Contactora	LC1D12-F7 110V 3A1a 1b	1
10	TS050-E10	Contactora	LC1-K09008-F7 110V 2A2B	1
	TS100-E11		LC1D128-F7 110V 2A2B	1
11	TS050-E11	Contactora	LC1-K0901-F7 110V 3A1b	1
	TS100-E10		LC1D18-F7 110V 3A1a 1b	1
12	TS050-E12	Phase Sequence Protector	RM17-TG00	1
13	TS050-E13	Terminal Block	(PT 2,5-QUATTRO)	4
14	TS050-E14	Rectifier	KBC10	1
15	TS050-E15	Varistor	14K471U	2
16	TS050-E16	Contactora Rail		1
17	TS050-E17	Fuse Holder		2
18	TS050-E18	Fuse		2
19	TS-1540041	Nut	M6x1.0	1
20	TS050-E20	Eye Bolt	M6x1.0	1
21	TS050-E21	Cable Gland	M25-18	1
22	TS050-E22	Shackle	3/16"	1
23		Wired Pendant Control (see chart)		1
24	TS050-E24	Cable Gland	M20-13	1
25	TS050-E25	Cable Gland	SPG-M20BM20x1.5	2
26	TS050-E26	Cover		1
	TS100-E26			1
27	TS-2361041	Spring Washer	M4	2
28	TS-2171012	Phillips Pan Hd Mach Screw	M4x0.7x6L	2
29	TS050-E29	Power Cable	2.0mmx4C	1

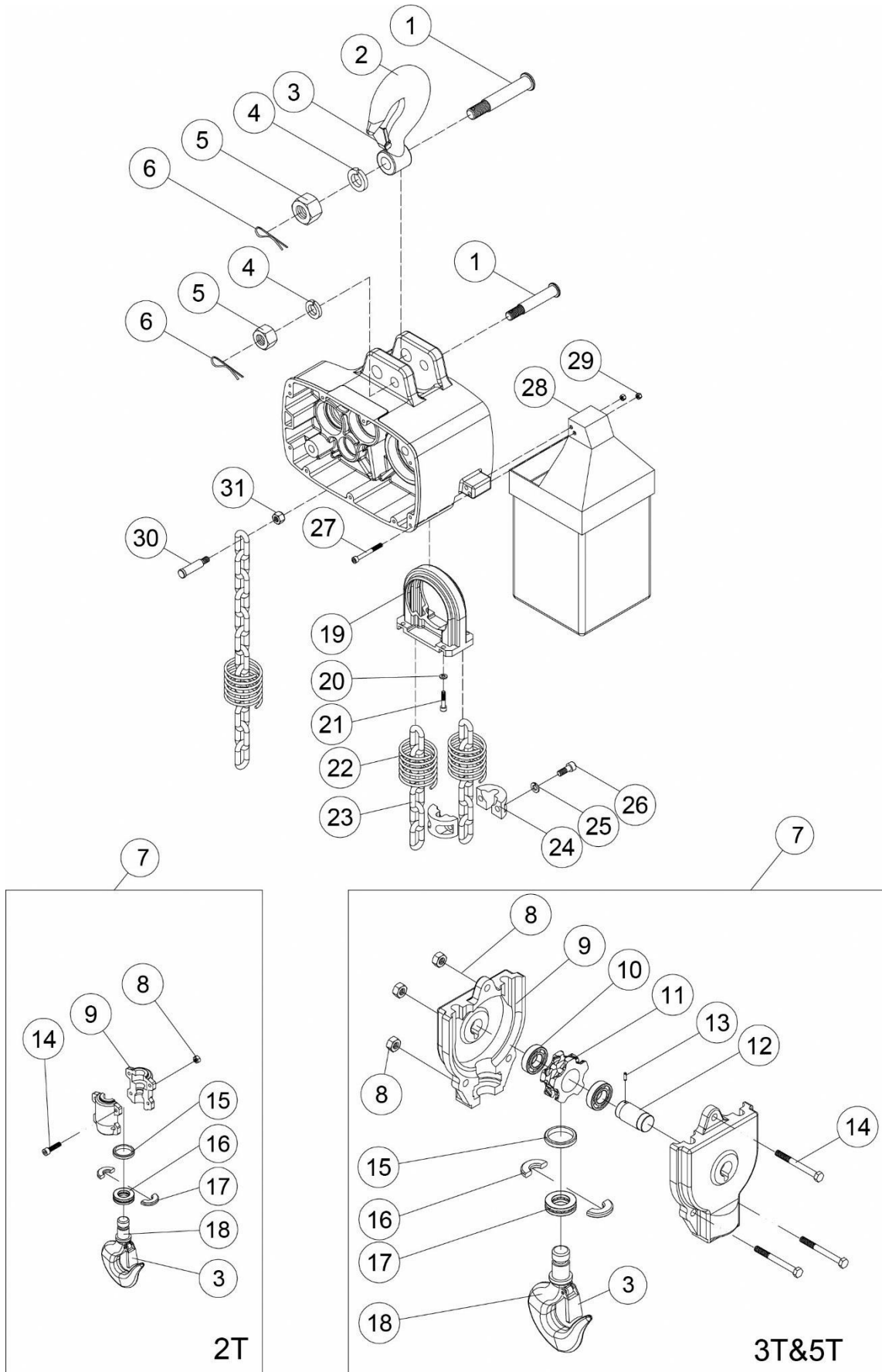
21.6.1 TS200,TS300,TS500 Motor Assembly and Housing – Exploded View



## 21.6.2 TS200,TS300,TS500 Motor Assembly and Housing – Parts List

Index No.	Part No.	Description	Size	Qty
1	TS-2172012	Phillips Pan Hd Mach Screw	M5x0.8x8	4
2	TS200-A02	End Cover		1
3	TS200-A03	Motor Rotor		1
4	5508937	Key, Dbl Rd Hd	t7x7x25L	1
5	TS200-A05	Oil Seal	Ø45xØ60x8t	1
6	TS200-A06	Motor Stator Ass'y	3~230V60Hz3.7/0.9kW	1
	TS200-A06M		3~460V60Hz3.7/0.9kW	1
7	TS200-A07	Bearing	6310ZZ	1
8	TS-2311081	Nut	M8x1.25	8
9	TS200-A09	Bearing	62062RU	1
10	TS200-A10	Oil Seal	Ø30xØ50x8t	1
11	TS200-A11	Motor End Cover		1
12	TS-2361081	Spring Washer	M8	4
13	TS200-A13	Threaded Bar	M8x1.25x290L	4
14	TS200-A14	Brake Ass'y TSB-165-370		1
15	TS-2361081	Spring Washer	M8	3
16	TS-1504121	Socket Hd Cap Screw	M8x1.25x60L	3
17	F006049	C-Retaining Ring, Ext	S-24	1
18	TS200-A18	Oil Seal	VA25	1
19	TS200-A19	Brake End Cover Gasket		1
20	TS200-A20	Brake End Cover		1
21	TS-2361061	Spring Washer	M6	4
22	TS-1503021	Socket Hd Cap Screw	M6x0.8x10L	4
23	TS200-A23	Fan	Ø165xØ19odd	1
24	1017067	C-Retaining Ring, Ext	S-19	1
25	TS200-A25	Bearing Housing		1
26	TS-2361081	Spring Washer	M8	4
27	TS-1504041	Socket Hd Cap Screw	M8x1.25x20L	4
28	TS200-A28	Limit Plate		1
29	TS-1502021	Socket Head Cap Screws	M5x0.8x10	3
30	TS-2361081	Spring Washer	M8	4
31	TS-1504021	Socket Hd Cap Screw	M8x1.25x12L	4
32	TS200-A32	Limit Switch		1
33	TS200-A33	Limit Cover Gasket		1
34	TS200-A34	Limit Cover		1
35	TS-2361081	Spring Washer	M8	4
36	TS-1504031	Socket Hd Cap Screw	M8x1.25x16L	4
37	TS200-A37	Gearbox		1
	TS500-A37			1
38	TS200-A38	Gearbox Gasket		1
39	TS200-A39	Parallel Pin	Ø6xØ15	2
40	TS200-A40	Gearbox Cover		1
41	TS-2361081	Spring Washer	M8	9
42	TS200-A42	Socket Hd Cap Screw	M8x1.25x90L	9
43	TS200-A43	Electric Cover Gasket		1
44	TS200-A44	Electric Cover		1
45	TS-2361081	Spring Washer	M8	8
46	TS-1504031	Socket Hd Cap Screw	M8x1.25x16L	8
47	TS200-A47	O-Ring	P-25	1

21.7.1 TS200,TS300,TS500 Hook Assembly – Exploded View

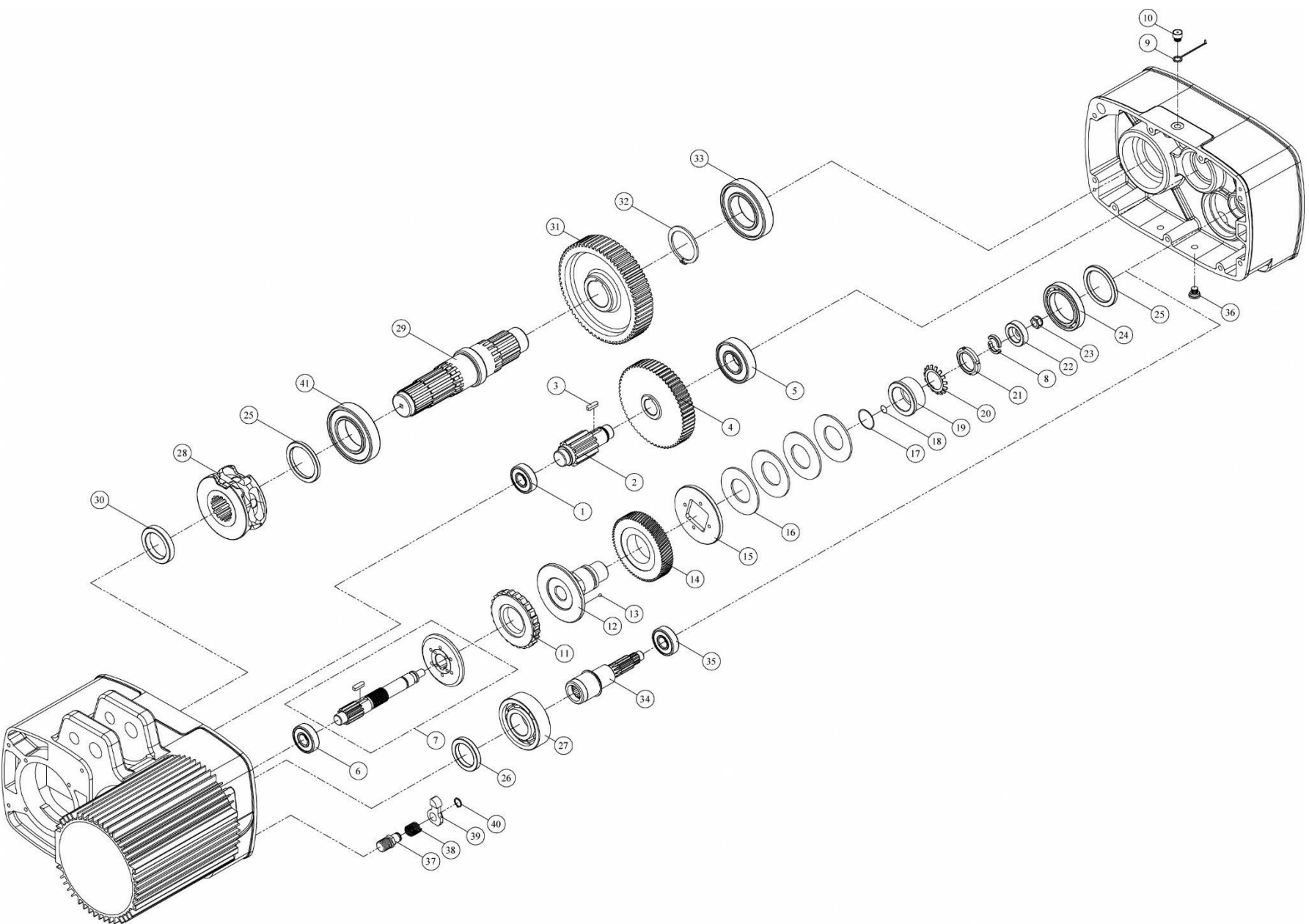




## 21.7.2 TS200,TS300,TS500 Hook Assembly – Parts List

Index No.	Part No.	Description	Size	Qty
1	TS200-B01	Top Hook Pin	Ø25x159L	2
	TS500-B01		Ø34x159L	1
2	TS200-B02	Top Hook Assembly		1
	TS300-B02			1
	TS500-B02			1
3	TS200-B03	Safety Latch Assembly		2
	TS300-B03			2
4	TS-2361161	Spring Washer	M16	2
	TS-2361201		M20	1
5	TS-2342161	Lock Nut	M16x1.5	2
	TS500-B05		M20x2.0	1
6	TS200-B06	Cotter Pin	3/32"x1"L	2
7	TS200-B07	Bottom Hook Complete Assembly		1
	TS300-B07			1
	TS500-B07			1
8	TS-1541031	Lock Nut	M8x1.25	4
	TS-2342101		M10x1.5	3
9	TS200-B09	Bottom Hook Housing		2
	TS300-B09			2
	TS500-B09			2
10	BB-NK3020	Needle Bearing	TA3020Z	2
	TS500-B10		TA4025Z	2
11	TS300-B11	Sprocket	Ø40x42L	1
	TS500-B11		Ø50x51L	1
12	TS300-B12	Bottom Hook Idle Wheel Axle	Ø30x71L	1
	TS500-B12		Ø40x78L	1
13	TS-209402	Spring Pin	Ø5x16L	1
14	TS-1504081	Socket Hd Cap Screw	M8x1.25x40L	4
	TS-1505061		M10x1.5x40L	3
	TS-1505071		M10x1.5x45L	3
15	TS200-B15	Bottom Hook Retaining Ring		1
	TS500-B15			1
16	TS200-B16	Bottom Hook Half Spacer		2
	TS500-B16			2
17	BB-51106	Thrust Bearing	51106	1
	TS500-B17		51207	1
18	TS200-B18	Bottom Hook		1
	TS300-B18			1
	TS500-B18			1
19	TS200-B19	Chain Regulator		1
	TS500-B19			1
20	TS-2361081	Spring Washer	M8	4
21	TS-1504041	Socket Hd Cap Screw	M8x1.25x20L	4
22	TS200-B22	Limit Spring		2
	TS200-B22			3
	TS500-B22			3
23	LCHAIN-10X30	Load Chain	Ø10.0x30mm	per ft.
	LCHAIN-10X30		Ø10.0x30mm	per ft.
	LCHAIN-11X34		Ø11.2x34mm	per ft.
24	TS200-B24	Chain Stopper	Ø10	2
	TS500-B24		Ø11.2	2
25	TS-2361081	Spring Washer	M8	2
26	TS-1504061	Socket Hd Cap Screw	M8x1.25x30L	2
27	TS200-B27		M8x1.25x80L	2
28		Chain Container (see chart)		1
29	TS-1541031	Nylon Nut	M8x1.25	2
30	TS300-B30	Chain Connecting Pin	Ø19x86L	1
	TS500-B30		Ø19x86L	1
31	TS-2342121	Nylon Nut	M12x1.75	1

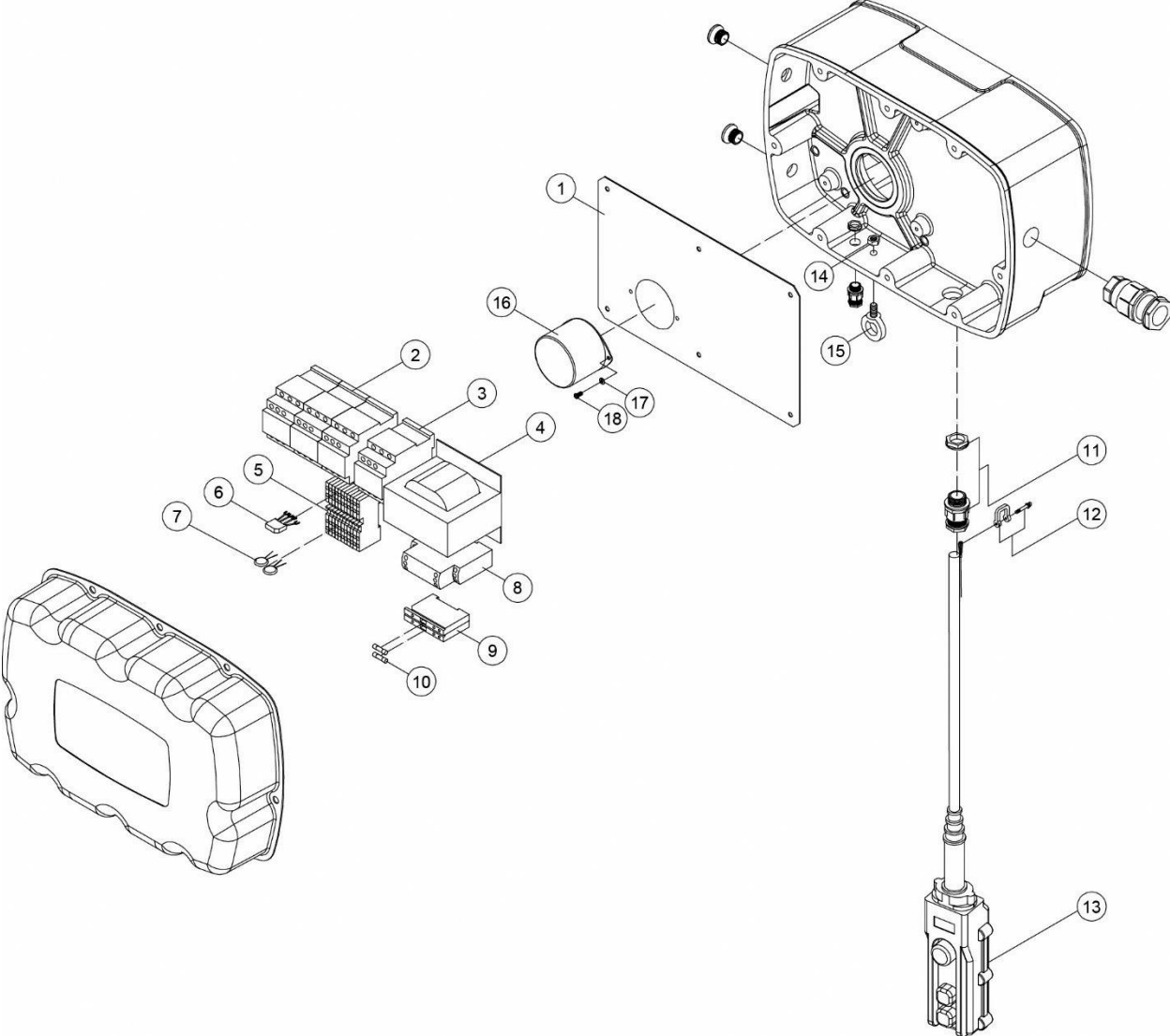
21.8.1 TS200, TS300, TS500 Gear Box – Exploded View



## 21.8.2 TS200,TS300,TS500 Gear Box – Parts List

Index No.	Part No.	Description	Size	Qty
1	BB-6307ZZ	Bearing	6307ZZ	1
2	TS200-C02	5th Gear	M3x15Tx149.5L	1
3	TS200-C03	Key, Dbl Rd Hd	t12x8x30L	1
4	TS200-C04	4th Gear	M2x73Tx32L	1
	TS300-C04	4th Gear	M2x68Tx32L	1
	TS500-C04	4th Gear	M2x77Tx32L	1
5	TS200-C05	Bearing	NF306	1
6	BB-6304	Bearing	6304	1
7	TS200-C07	3rd Gear Assembly	M2x19Tx210	1
	TS300-C07	3rd Gear Assembly	M2x24Tx210	1
	TS500-C07	3rd Gear Assembly	M2x15Tx210	1
8	TS200-C08	Load Brake Gear Spacer		2
9	TS200-C09	Air Plug		1
10	TS200-C10	Hex. Oil Plug		1
11	TS200-C11	Ratchet Ass'y		1
12	TS200-C12	Brake Bushing		1
13	SB-8MM	Steel Ball	Ø8	3
14	TS200-C14	2nd Gear Assembly	M1.75x68Tx24	1
15	TS200-C15	Brake Body	Ø112x8	1
16	TS200-C16	Disc Spring	Ø90xØ45x3.5t	4
17	TS200-C17	O-Ring	P-38	1
18	TS200-C18	O-Ring	P-18	1
19	TS200-C19	Disc Spring Bushing		1
20	TS200-C20	Spacer	AW07	1
21	TS200-C21	Nut	KM7	1
22	TS200-C22	End Spacer	Ø45xØ14x13L	1
23	TS-2342121	Lock Nut	M12x1.75	1
24	BB-6912	Bearing	6912	1
25	TS200-C25	Oil Seal	Ø60xØ78x7t	2
26	TS200-A05	Oil Seal	Ø45xØ60x8t	1
27	BB-6009ZZ	Bearing	6009ZZ	1
28	TS200-C28	Load Sheave		1
	TS500-C28			1
29	TS200-C29	Load Sheave B	Ø70x288.5L	1
30	TS200-C30	Spacer	Ø70xØ50x12L	1
31	TS200-C31	6th Gear	M3x64T	1
32	F006071	C-Retaining Ring, Ext	S-50	1
33	TS200-C33	Bearing	6309ZZ	1
34	TS200-C34	1st Gear	M1.75x12	1
35	BB-6203ZZ	Bearing	6203ZZ	1
36	TS200-C36	Lubricant Drain Bolt		1
37	TS200-C37	Ratchet Pawl Pin		1
38	TS200-C38	Ratchet Pawl Spring		1
39	TS200-C39	Ratchet Pawl		1
40	F006044	C-Retaining Ring, Ext	S-16	1
41	TS200-C41	Bearing	6212ZZ	1

21.9.1 TS200,TS300,TS500 Electric Assembly – Exploded View



## 21.9.2 TS200,TS300,TS500 Electric Assembly – Parts List

Index No.	Part No.	Description	Size	Qty
1	TS200-D01	Electric Bracket		1
2	TS200-D02	Contactor	110V 3A1a1bLC1-D25-F7	3
3	TS200-D03	Contactor	110V 2A2BLC1-D258-F7	1
4	TS200-D04	Transformer	PS-16213N	1
5	TS200-D05	Terminal Block	PT 2,5-QUATTRO	12
6	TS200-D06	Rectifier	KBC10	1
7	TS200-D07	Varistor	14K471U	2
8	TS200-D08	Phase Sequence Protector	RM17-TG00	1
9	TS200-D09	Fuse Holder		2
10	TS200-D10	Fuse		2
11	TS200-D11	Cable Gland	M25-18	1
12	TS200-D12	Shackle	3/16"	1
13		Wired Pendant Control (see chart)		1
14	TS-2311081	Nut	M8x1.25	1
15	TS200-D15	Eye Bolt	M8x1.25	1
16	TS200-D16	Cover		1
17	TS-2361041	Spring Washer	M4	2
18	TS-2171012	Phillips Pan Hd Mach Screw	M4x0.7x6L	2
19	TS200-D19	Power Cable	3.5mmx4C	1