



SERVICE PARTS LIST

BUL.54-10-4002

HOLE HAWG

REVISED BUL 54-10-4001 DATE March '71

Catalog No. 1675-1

Starting Serial No. 413-14429

WIRING INSTR. 58-01-0621

Both Model and Serial No. must be furnished to obtain correct parts.

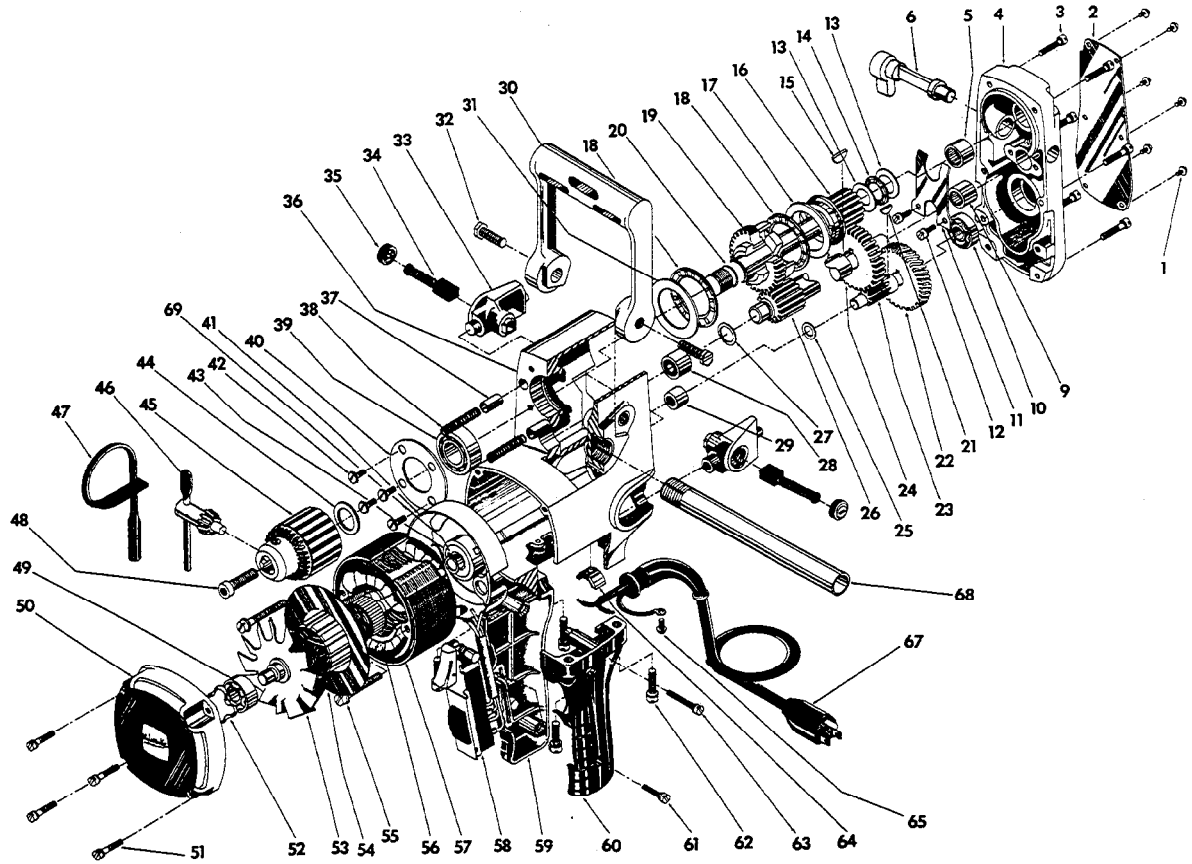


FIG.	PART NO.	DESCRIPTION OF PART	NO. REQ.	FIG.	PART NO.	DESCRIPTION OF PART	NO. REQ.
	1	06-81-8200 4-36x3/16 Rd. Hd. Name Plate Scr.	(6)		36	28-50-6121 Motor Housing Assy.	
	2	12-98-7050 Name Plate			37	44-70-0160 Shifting Plunger	(2)
	3	06-81-6350 8-32x1 Fil. Hd. Gear Case Cover Scr.	(6)		38	40-50-7670 Shifting Spring	(2)
	4	28-20-1121 Gear Case Cover			39	02-04-1700 Ball Bearing	
	5	02-50-3170 Needle Bearing			40	44-66-5241 Bearing Retainer Plate	
★	6	31-11-0100 Shifting Cam			41	31-55-0060 Coil Shield	
	9	02-50-2750 Needle Bearing			42	06-81-5400 8-32x5/16 Binder Hd. Brg. Ret. Scr.	(4)
	10	02-04-0910 Ball Bearing			43	02-04-1050 Ball Bearing	
	11	45-98-0100 Shifting Yoke			44	45-88-0330 Chuck Spacer Washer	
	12	06-81-6050 8-32x5/16 Fil. Hd. Shifting Yoke Scr.	(2)		45	48-66-1380 Chuck	
	13	45-88-7150 Thrust Washer	(2)		46	48-66-3280 Chuck Key	
	14	02-80-6020 Thrust Bearing			47	48-66-4040 Key Holder	
	15	06-42-2000 No. 3 Woodruff Key			48	06-75-3150 1/4-20x1 Soc. Hd. Chuck Ret. Scr.	
	16	32-10-0132 Hi-Speed Clutch Gear Assy.			49	02-04-0940 Ball Bearing	
	17	45-88-7140 Thrust Washer			50	28-50-6111 Bearing Support Housing Assy.	
	18	02-80-1800 Thrust Bearing	(2)		51	06-81-6200 8-32x5/8 Fil. Hd. Brg. Support Hsg. Scr.	(4)
	19	32-10-0122 Lo-Speed Clutch Gear Assy.			52	45-88-7110 Spring Washer	
	20	38-50-4991 Spindle		★	53	16-62-1165 Armature Assy.	
	21	06-42-1200 No. 212 Woodruff Key			54	42-14-0150 Baffle	
	22	32-42-1301 1st. Intermediate Gear			55	06-81-6700 8-32x1 7/8 Fil. Hd. Field Scr.	(2)
	23	36-66-4071 1st. Intermediate Pinion			56	18-62-1120 Field Assy.	
	24	32-44-1311 2nd. Intermediate Gear			57	23-16-0430 Field Insulator	
	25	45-88-7100 Fiber Thrust Washer		★	58	23-66-0751 Switch	
	26	36-66-4081 2nd. Intermediate Pinion			59	31-44-0191 R.H. Drill Handle Assy.	
	27	45-88-7095 Fiber Thrust Washer			60	31-44-0180 L.H. Drill Handle	
	28	02-50-3180 Needle Bearing			61	06-81-6200 8-32x5/8 Fil. Hd. Handle Cover Scr.	
	29	02-50-2020 Needle Bearing			62	06-81-7560 12-24x7/8 Fil. Hd. Handle Ret. Scr.	(4)
	30	28-44-7151 Spade Handle			63	06-81-6400 8-32x1 1/8 Fil. Hd. Handle Cover Scr.	
	31	45-88-0520 Thrust Washer			64	31-55-0070 Power Cord Shield	
	32	45-04-0380 3/8-16x1 Hex Hd. Spade Handle Scr.	(2)		65	06-81-8625 6-32x1/4 Ground Screw	
★	33	22-22-0281 Brush Holder Assy.	(2)		67	22-64-0620 Cord Set	
★	34	22-18-0450 Carbon Brush Assy.	(2)		68	43-62-0120 Pipe Handle	
★	35	23-44-0130 Brush Retaining Cap	(2)		69	34-60-0827 Retaining Ring	