



SERVICE PARTS LIST

BULLETIN NO.
54-10-4008

SPECIFY CATALOG NO. AND SERIAL NO. WHEN ORDERING PARTS		REVISED BULLETIN 54-10-4007	DATE May '86
TWO SPEED HOLE HAWG			
CATALOG NO. 1675-1		STARTING SERIAL NO. 413-260800	
WIRING INSTRUCTION 58-01-0625			
CAT. NO.	START SER. NO.	BILINGUAL LABEL	

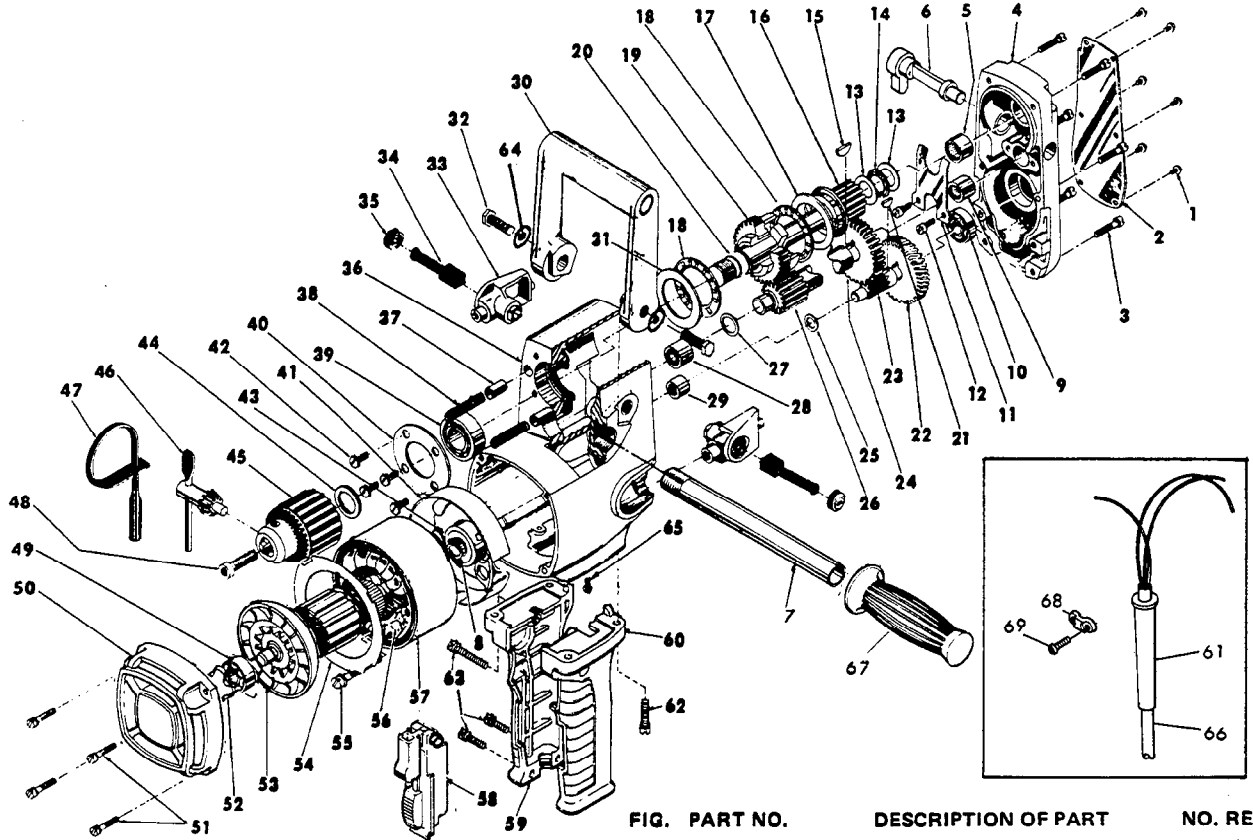


FIG.	PART NO.	DESCRIPTION OF PART	NO. REQ.
	1	06-81-8400 4-40 x 1/4" Rd. Hd. Nameplate Scr.	(8)
	2	12-98-7050 Nameplate	(1)
	3	06-81-6350 8-32 x 1 Fil. Hd. Gear Case Cover Scr.	(8)
	4	28-20-1122 Gear Case Cover	(1)
	5	02-50-3170 Needle Bearing	(1)
	6	31-11-0100 Shifting Cam	(1)
★	7	43-62-0122 Pipe Handle	(1)
	8	34-60-0827 Retaining Ring	(1)
	9	02-50-2750 Needle Bearing	(1)
	10	02-04-0910 Ball Bearing	(1)
	11	45-98-0100 Shifting Yoke	(1)
	12	06-81-6050 8-32 x 5/16 Fil. Hd. Shifting Yoke Scr.	(2)
	13	45-88-7150 Thrust Washer	(2)
	14	02-80-6020 Thrust Bearing	(1)
	15	06-42-2000 No. 3 Woodruff Key	(1)
	16	32-10-0132 Hi-Speed Clutch Gear Assy.	(1)
	17	45-88-7140 Thrust Washer	(1)
	18	02-80-1800 Thrust Bearing	(2)
	19	32-10-0122 Lo-Speed Clutch Gear Assy.	(1)
	20	38-50-4991 Spindle	(1)
	21	06-42-1200 No. 212 Woodruff Key	(1)
	22	32-42-1301 1st. Intermediate Gear	(1)
	23	36-66-4071 1st. Intermediate Pinion	(1)
	24	32-44-1311 2nd. Intermediate Gear	(1)
	25	45-88-7100 Fiber Thrust Washer	(1)
	26	36-66-4081 2nd. Intermediate Pinion	(1)
	27	45-88-7095 Fiber Thrust Washer	(1)
	28	02-50-3180 Needle Bearing	(1)
	29	02-50-2020 Needle Bearing	(1)
	30	31-44-1100 Spade Handle	(1)
	31	45-88-0520 Thrust Washer	(1)
	32	06-75-0500 3/8-16 x 1 Hex Hd. Spade Handle Scr.	(2)
	33	22-22-0285 Brush Holder Assy.	(2)
	34	22-18-0450 Carbon Brush Assy.	(2)
	35	23-44-0135 Brush Retaining Cap	(2)
	36	28-50-6125 Motor Housing Assy.	(1)

FIG.	PART NO.	DESCRIPTION OF PART	NO. REQ.
	37	44-70-0160 Shifting Plunger	(2)
	38	40-60-7670 Shifting Spring	(2)
	39	02-04-1700 Ball Bearing	(1)
	40	44-66-5241 Bearing Retainer Plate	(1)
	41	31-55-0065 Coil Shield	(1)
	42	06-81-5502 8-32 x 3/8 Comb. Phil. Hd. Sem.	(4)
	43	02-04-1050 Ball Bearing	(1)
	44	45-88-0330 Chuck Spacer Washer	(1)
	45	49-66-1380 Chuck	(1)
	46	48-66-3280 Chuck Key	(1)
	47	48-66-4040 Key Holder	(1)
	48	06-75-3150 1/4-20 x 1 L.H. Soc. Hd. Cap Screw	(1)
★	49	02-04-0911 Ball Bearing	(1)
★	50	28-50-6235 Bearing Support Housing	(1)
	51	06-81-6202 8-32 x 5/8 Fil. Hd. Brg. Support Hsg. Scr.	(4)
	52	45-88-7110 Spring Washer	(1)
	53	16-50-0070 Armature Assy. (Incl. 22-84-0660 Fan & Fig. 8)	(1)
	54	42-14-0150 Baffle	(1)
	55	06-95-3285 8-16 x 1-13/16" Plastite Pan Hd. Screw	(2)
	56	18-50-0070 Field Assy.	(1)
	57	23-16-0425 Field Insulator	(1)
	58	23-66-1020 Switch	(1)
★	59	31-44-1440 R.H. Drill Handle	(1)
★	60	31-44-1445 L.H. Drill Handle	(1)
	61	44-76-0150 Cord Protector	(1)
★	62	06-82-5358 12 - 24 x 3/4" Pan Hd. Taptite Screw	(4)
★	63	06-82-7326 8-16 x 1" Plastite Screw	(3)
	64	45-88-0605 Flat Washer	(2)
	65	06-81-8625 6-32 x 1/4 Ground Scr.	(1)
	66	22-64-0121 Cord Set	(1)
	67	43-62-0246 Handle Grip	(1)
	68	31-17-0156 Cord Clamp	(1)
	69	06-95-0216 8-16 x 5/8" Plastite Screw	(2)
★	70	10-98-5986 Caution Label (Not Shown)	(1)

MILWAUKEE ELECTRIC TOOL CORPORATION
13135 W. LISBON RD., BROOKFIELD, WIS. 53005