



SERVICE PARTS LIST

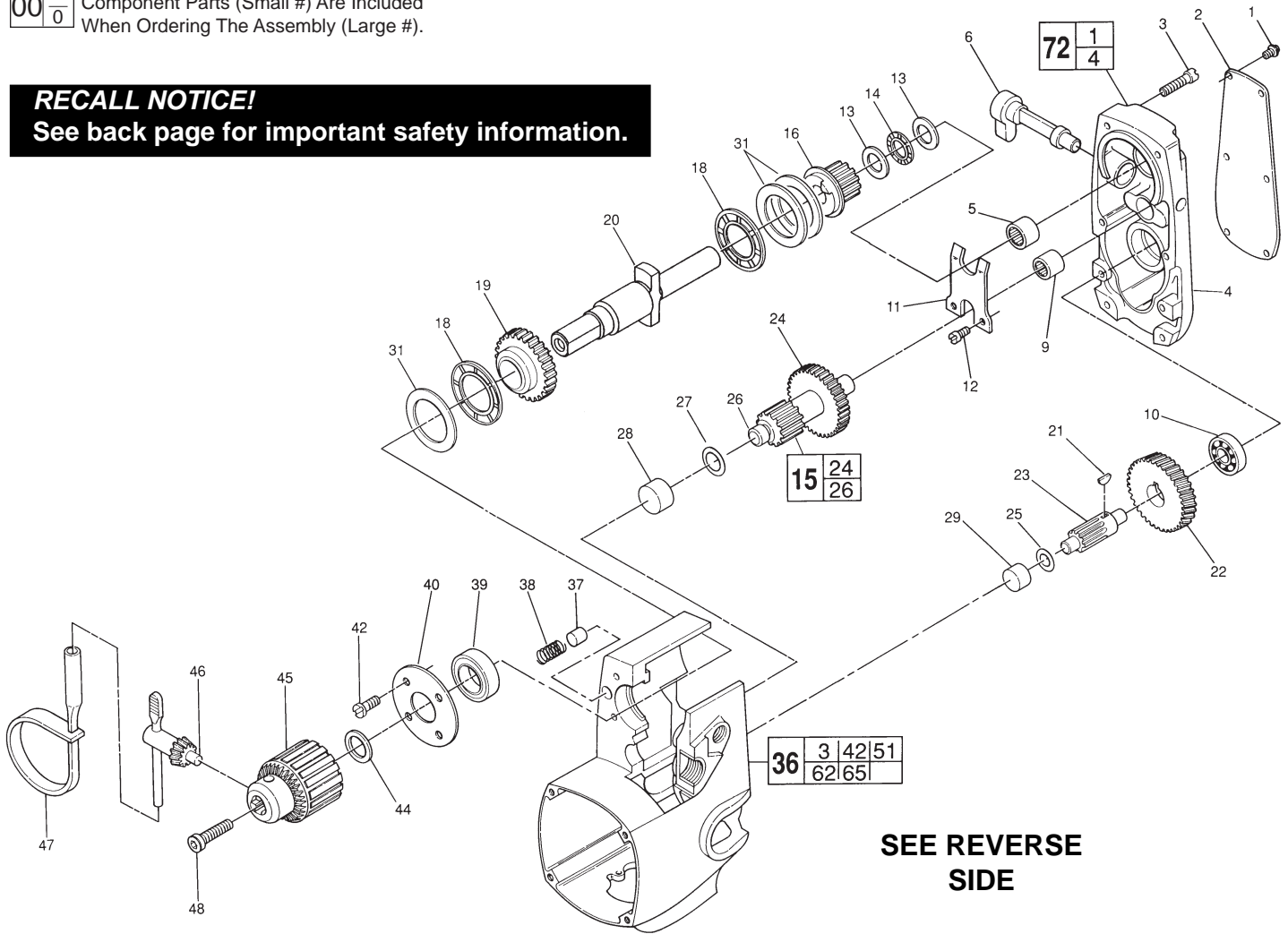
SPECIFY CATALOG NO. AND SERIAL NO. WHEN ORDERING PARTS		REVISED BULLETIN 54-10-4012	DATE May 2012
TWO SPEED HOLE HAWG®			
CATALOG NO. 1675-1	STARTING SERIAL NO. 413B	WIRING INSTRUCTION 58-01-0626	

EXAMPLE:

00	0
----	---

 Component Parts (Small #) Are Included
 When Ordering The Assembly (Large #).

RECALL NOTICE!
 See back page for important safety information.



SEE REVERSE SIDE

FIG.	PART NO.	DESCRIPTION OF PART	QTY.	FIG.	PART NO.	DESCRIPTION OF PART	QTY.
1	06-82-5266	4-40 x 1/4" Pan Hd. T-10 Screw	(6)	★ 31	45-88-0520	Thrust Washer	(3)
2	12-98-7300	Service Nameplate	(1)	36	28-50-6129	Motor Housing Assembly	(1)
3	06-82-5362	8-32 x 1" Pan Hd. T-20 Screw	(6)	37	44-70-0160	Shifting Plunger	(2)
4	28-20-1251	Gear Case Cover	(1)	38	40-50-7670	Shifting Spring	(2)
5	02-50-3170	Needle Bearing	(1)	39	02-04-1700	Ball Bearing	(1)
6	31-11-0100	Shifting Cam	(1)	40	44-66-5241	Bearing Retainer Plate	(1)
9	02-50-2750	Needle Bearing	(1)	42	06-82-7252	8-32 x 3/8" Pan Hd. T-20 Screw	(4)
10	02-04-0910	Ball Bearing	(1)	44	45-88-0330	Chuck Spacer Washer	(1)
11	45-98-0100	Shifting Yoke	(1)	45	48-66-1381	Chuck	(1)
12	06-82-7252	8-32 x 3/8" Pan Hd. T-20 Screw	(2)	46	48-66-3280	Chuck Key	(1)
13	45-88-7150	Thrust Washer	(2)	47	48-66-4040	Key Holder	(1)
14	02-80-6020	Thrust Bearing	(1)	48	06-75-3150	1/4-20 x 1" L.H. Soc. Hd. Cap Screw	(1)
★ 15	36-66-4530	2nd. Intermediate Pinion and Gear	(1)	72	28-20-1126	Gear Case Cover Assembly	(1)
16	32-10-0132	Hi-Speed Clutch Gear Assembly	(1)				
18	02-80-1800	Thrust Bearing	(2)				
19	32-10-0122	Lo-Speed Clutch Gear Assembly	(1)				
20	38-50-4991	Spindle	(1)				
21	06-42-1200	No. 212 Woodruff Key	(1)				
22	32-42-1301	1st. Intermediate Gear	(1)				
23	36-66-4071	1st. Intermediate Pinion	(1)				
25	45-88-7100	Fiber Thrust Washer	(1)				
27	45-88-7095	Fiber Thrust Washer	(1)				
28	02-50-3180	Needle Bearing	(1)				
29	02-50-2435	Needle Bearing	(1)				

FIG. 20,45
NOTES
 Chuck mounted to spindle @ 90 ft.lbs. torque.

FIG. 4
LUBRICATION
 3-1/2 oz. Type "E" Grease, No. 49-08-4122.
 Pre-lube all needle bearings with Type "E" Grease, No. 49-08-4122.

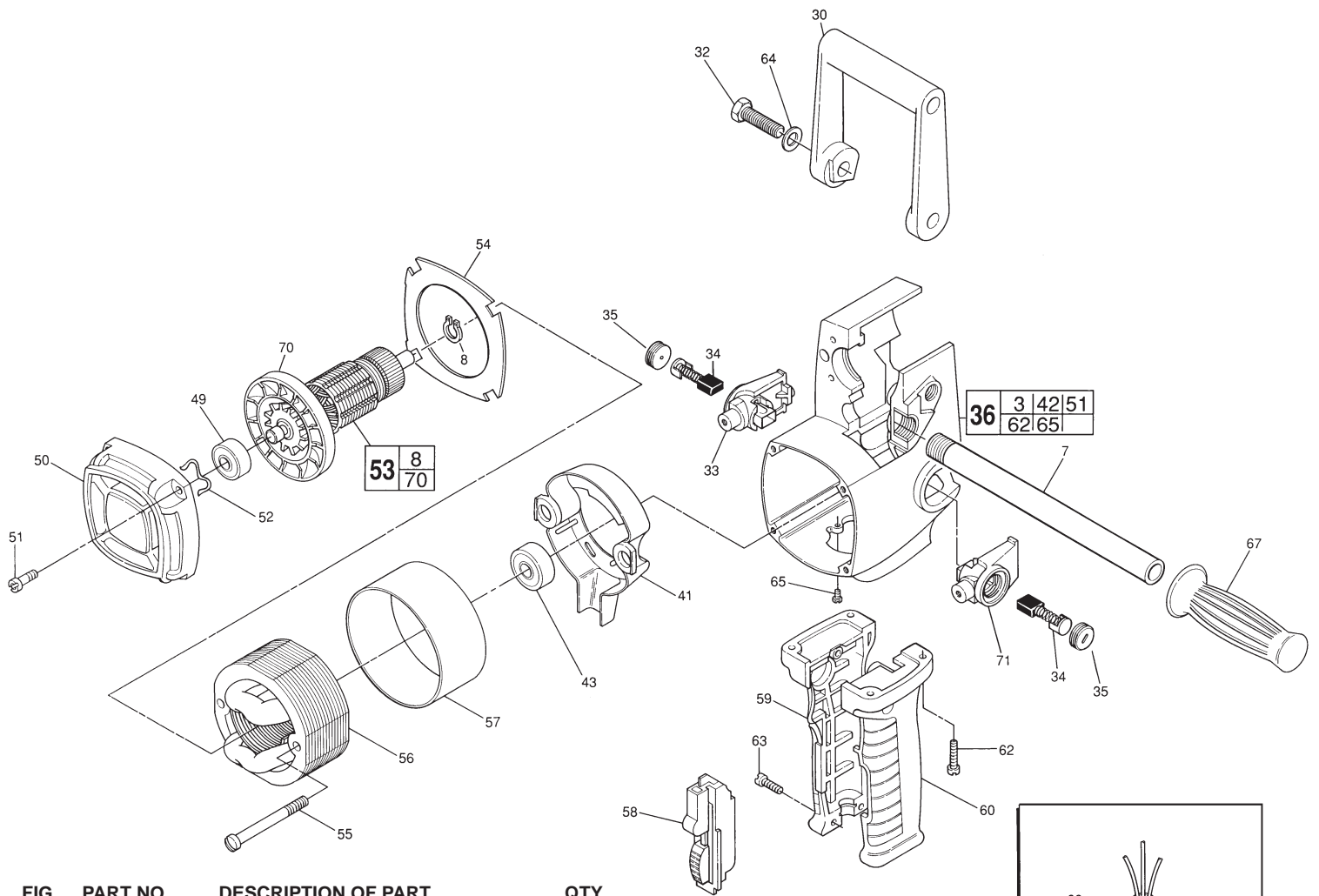
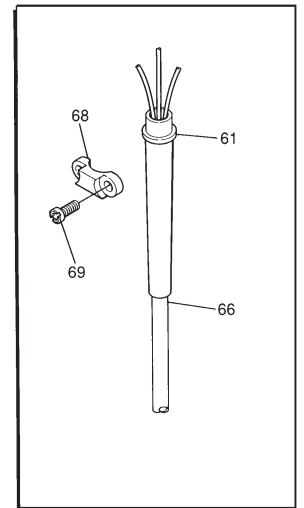


FIG.	PART NO.	DESCRIPTION OF PART	QTY.
	7	Pipe Handle	(1)
	8	Retaining Ring	(1)
	30	Spade Handle	(1)
	32	3/8-16 x 1" Hex Hd. Spade Handle Screw	(2)
	33	R. H. Brush Holder Assembly	(1)
	34	Carbon Brush Assembly	(2)
	35	Brush Retaining Cap	(2)
	36	Motor Housing Assembly	(1)
	41	Coil Shield	(1)
	43	Ball Bearing	(1)
	49	Ball Bearing	(1)
	50	Bearing Support Housing	(1)
	51	8-32 x 3/4" Pan Hd. T-20 Screw	(4)
	52	Spring Washer	(1)
	53	Armature Assembly	(1)
	54	Baffle	(1)
	55	8-16 x 1-7/8" Pan Hd. Plastite T-20 Screw	(2)
	56	Field Assembly	(1)
	57	Field Insulator	(1)
	58	Switch	(1)
	59	R.H. Drill Handle	(1)
	60	L.H. Drill Handle	(1)
	61	Cord Protector	(1)
	62	1/4-20 x 3/4" Pan Hd. Taptite T-27 Screw	(4)
	63	8-16 x 1" Pan Hd. Plastite T-20 Screw	(3)
	64	Flat Washer	(2)
	65	6-32 x 1/4" Ground Screw	(1)
	66	Cord Set	(1)
	67	Handle Grip	(1)
	68	Cord Clamp	(1)
	69	8-16 x 5/8" Pan Hd. Slit. T-20 Plastite	(2)
	70	Fan	(1)
	71	L.H. Brush Holder Assembly	(1)
	10-98-5986	Caution Label	(1)



RECALL NOTICE!

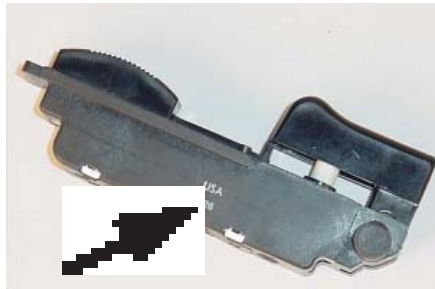
Milwaukee is providing a **no-charge** warranty service to owners of **1610-1, 1630-1 1/2" Compact Hole-Shooter Drills and 1670-1, 1675-1 1/2" Hole-Hawg® Drills**. We are taking this action because under certain circumstances the switch of the drill may stick in the "on" position, which could lessen control of the product, posing a risk of injury to the operator.

1610-1, 1630-1 1/2" Compact Hole-Shooter Drills and 1670-1, 1675-1 1/2" Hole-Hawg® Drills within the serial number ranges shown below and sold between May 30,2000 and February 27, 2001 are affected.

Nameplate Catalog Number	Serial Number Range
1610-1	7 0 0 B 4 <u>00200013</u> thru 700B4 <u>00480097</u>
1630-1	7 1 8 B 4 <u>00230057</u> thru 718B4 <u>00480118</u>
1670-1	472B4 <u>00200061</u> thru 472B4 <u>00440188</u>
1675-1	413B4 <u>00190567</u> thru 413B4 <u>00522000</u>

Drills listed should **be inspected** for the presence of a **23-66-1020** Switch with a date code within 0021 through 0044. If the unit contains a subject dated coded 23-66-1020 switch, please return drill to the nearest Milwaukee **factory** Service Center or Authorized Service station for no-charge warranty replacement of the switch.

Affected switches carry a manufacture's four [4] digit **date code of 0021 thru 0044** imprinted on its body.



If nameplate has an '**X**' stamped into the tool's nameplate, next to the catalog number, the tool has been repaired and the defective switch has already been replaced.

If you need assistance in locating the service facility nearest you or have questions please call 1.800.729.3878