



# Parts Manual

Mfg. No: 1697099-00  
618SS, B&S 5.5 Gross TP 18" Single  
Stage Snowthrower (2019)



---

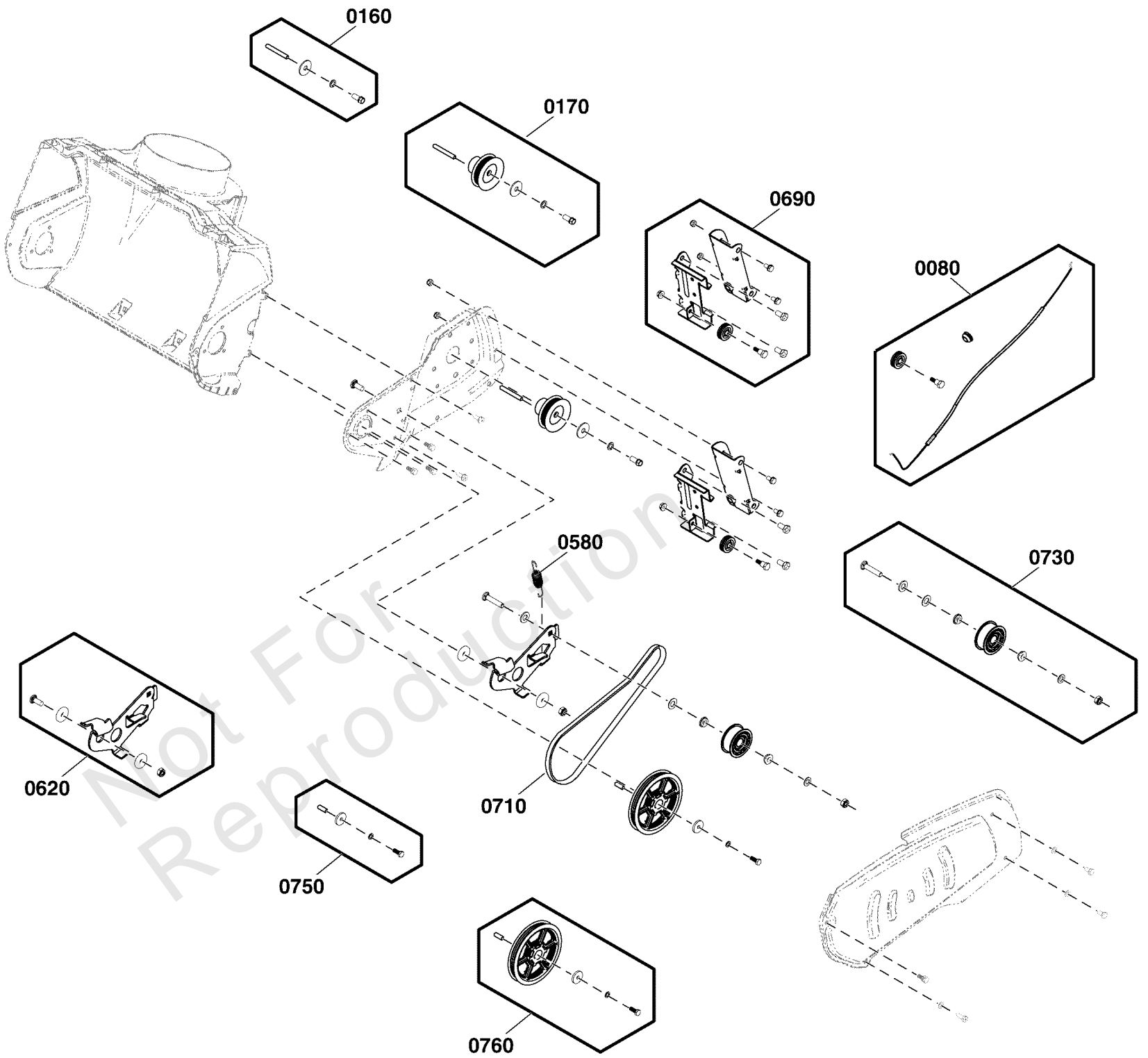
<b>Model Components</b>	<b>Page</b>
Auger Drive Group.....	4
Auger Group.....	6
Chute Group - Manual.....	8
Chute Rotation Group - Manual.....	10
Decals Group Briggs & Stratton.....	12
Engine Group.....	14
Frame Group.....	16
Handles & Controls Group.....	18
Wheel & Body Covering Group.....	20
Torque Specification Chart.....	22

Not For  
Reproduction

# Auger Drive Group

Note: Unless noted otherwise, use the standard torque specifications

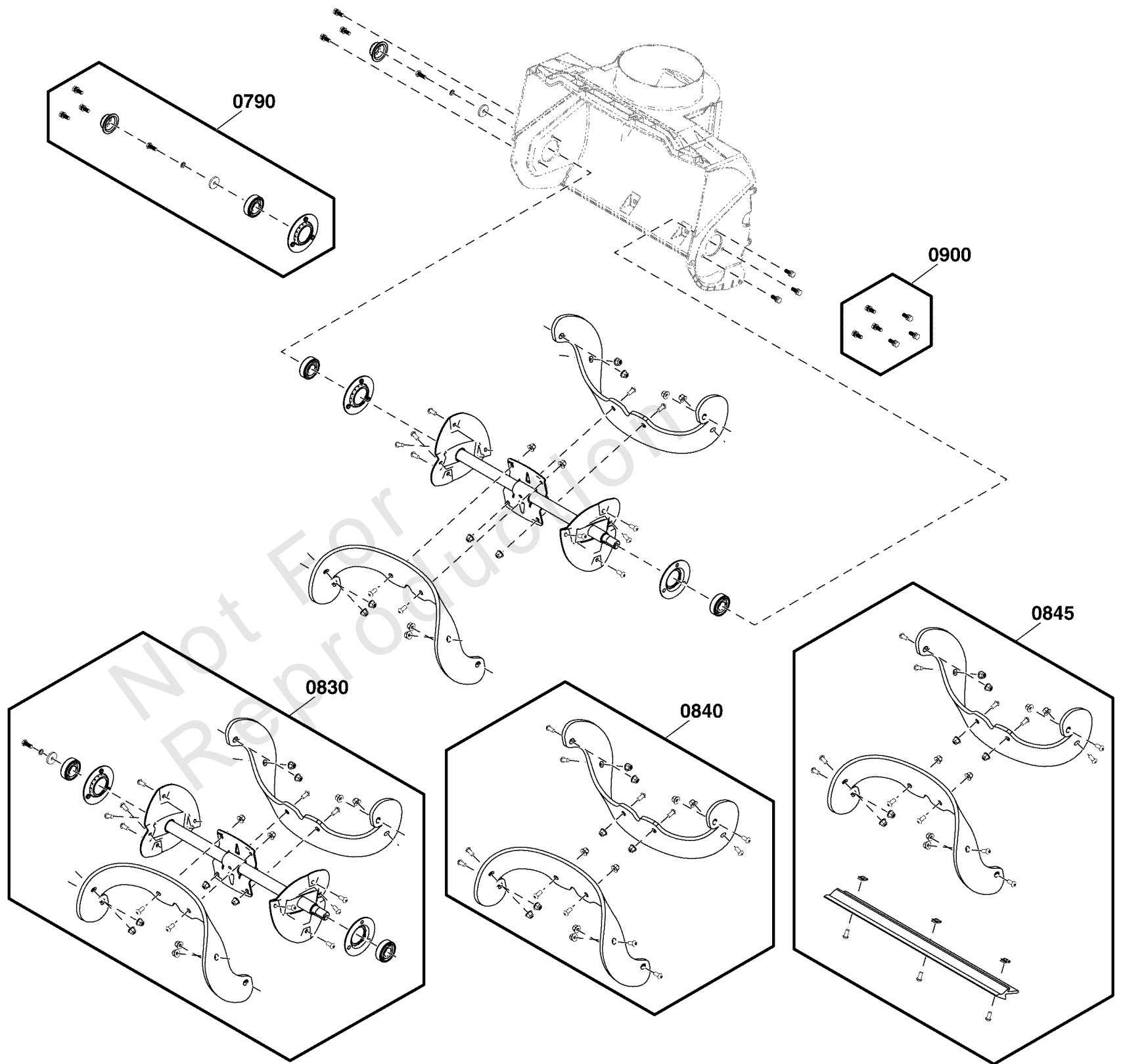
Mfg. No: 1697099-00



## Auger Drive Group

REF NO	PART NO	QTY	DESCRIPTION
0080	84003272	1	KIT, Auger Cable Spool Control
0160	84003281	1	KIT, Key, Drive Pulley
0170	84003274	1	KIT, Drive Pulley
0580	84003271	1	SPRING, IDLER PULLEY
0620	84002795	1	KIT, Idler Drive Arm
0690	84002667	1	KIT, Belt Guide
0710	84002670	1	BELT, Drive
0730	84002685	1	KIT, IDLER PULLEY
0750	84003282	1	KIT, KEY, Auger Pulley
0760	84002688	1	KIT, DRIVE PULLEY

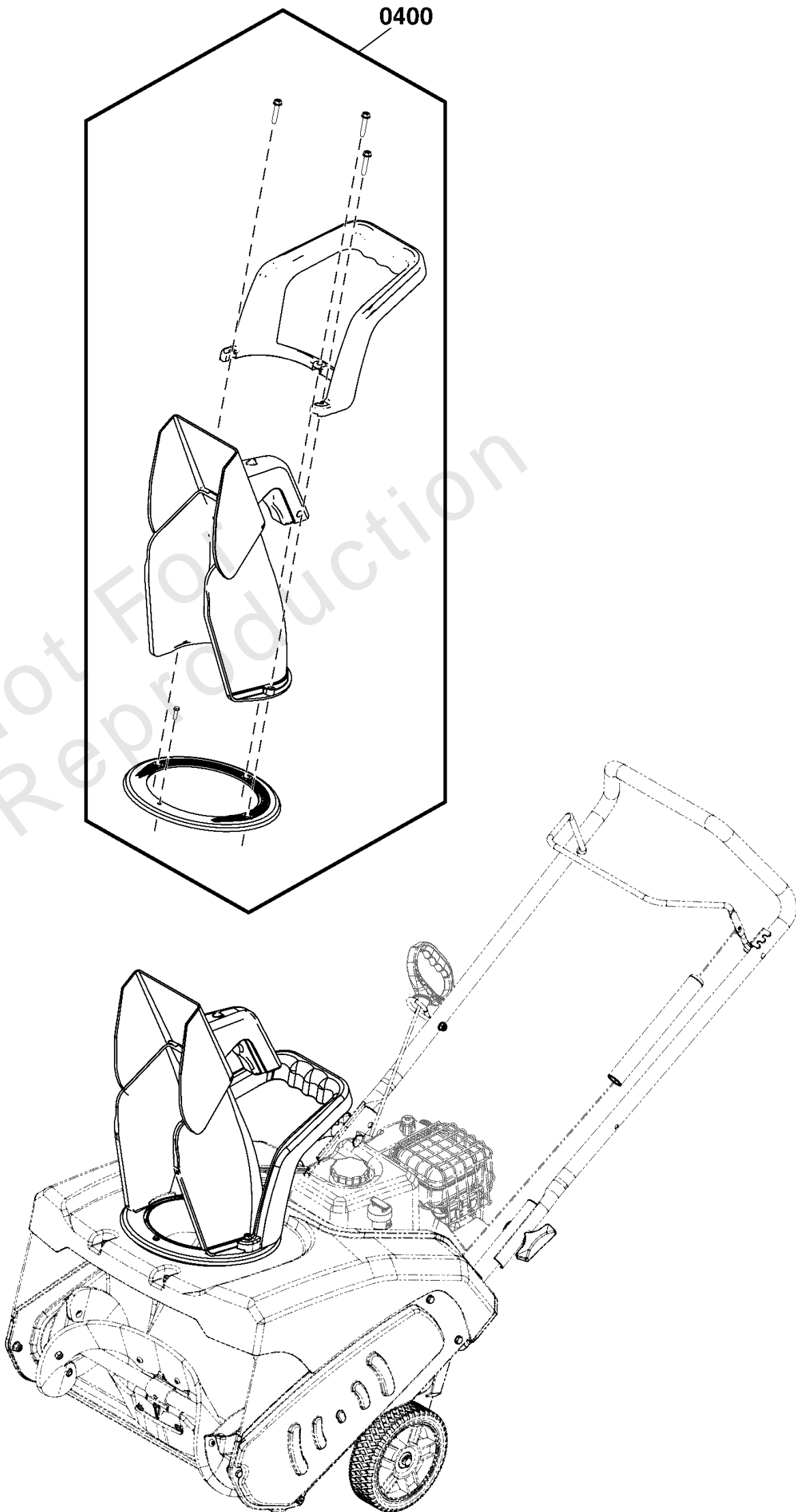
Not For Reproduction



## *Auger Group*

REF NO	PART NO	QTY	DESCRIPTION
0790	84002738	2	KIT, AUGER BEARING
0830	84003280	1	KIT, AUGER
0840	84002671	1	KIT, AUGER FLIGHTS
0845	84002676	1	KIT, Flight and Scraper Bar
0900	84002794	1	KIT, COVER HARDWARE

Not For Reproduction



## Chute Group - Manual

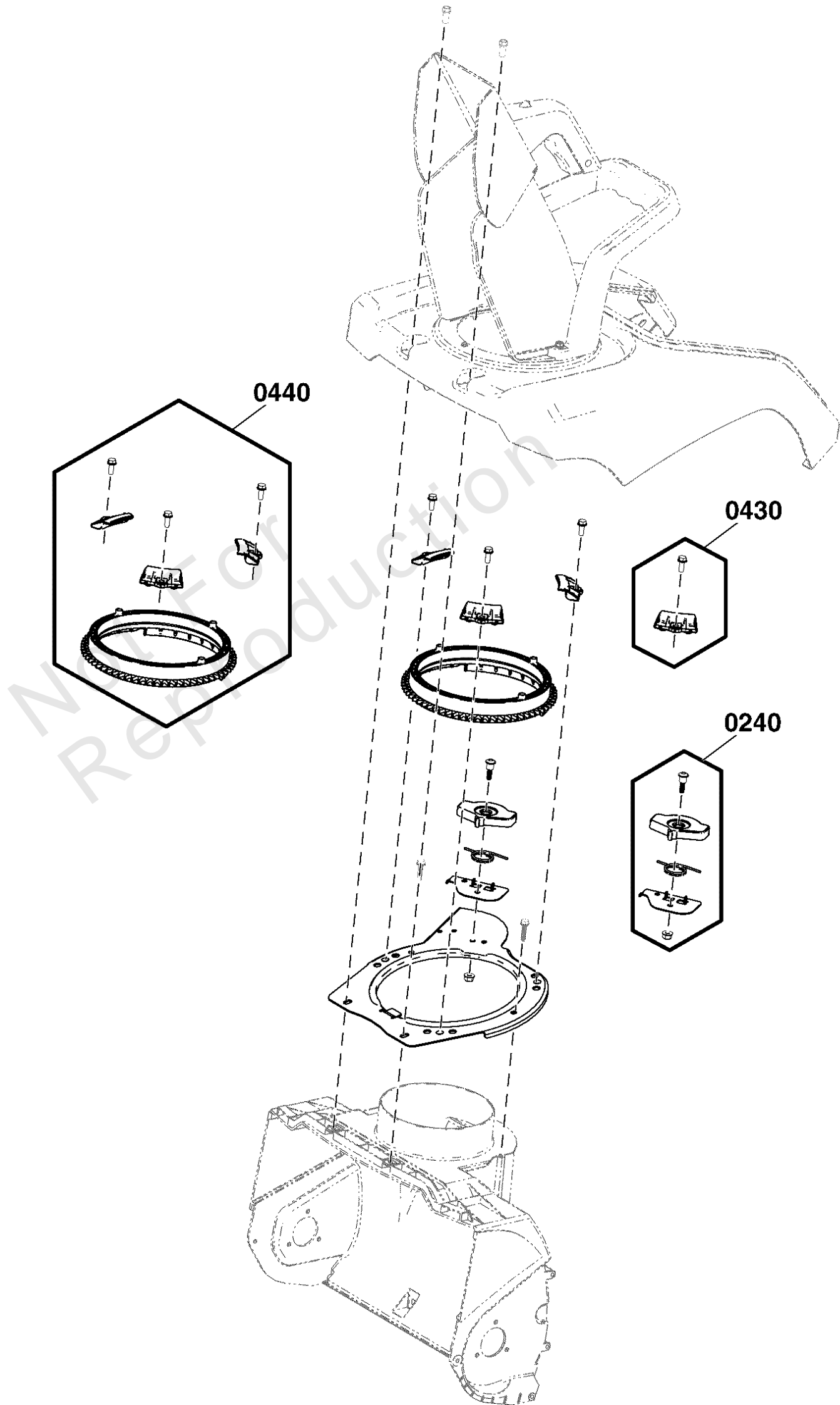
---

REF NO	PART NO	QTY	DESCRIPTION
0400	84002677	1	KIT, CHUTE ASSEMBLY

---

Not For Reproduction





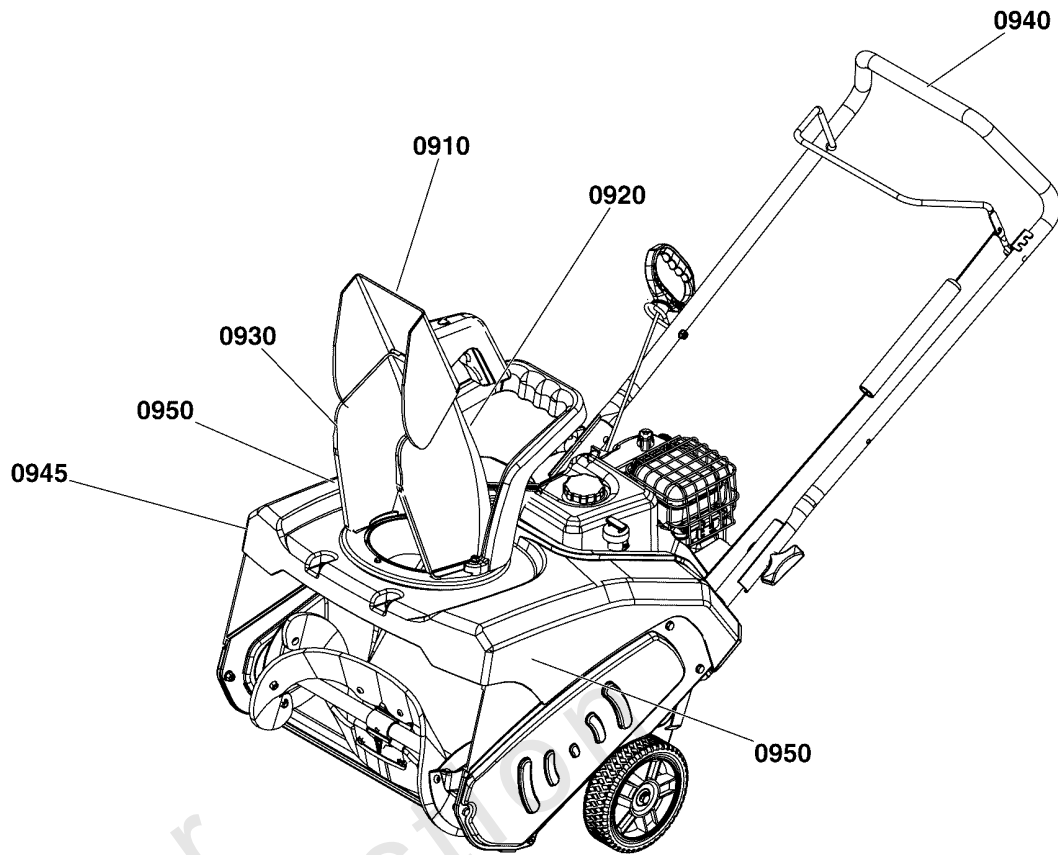
## *Chute Rotation Group - Manual*

---

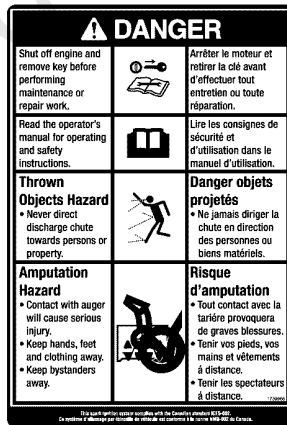
REF NO	PART NO	QTY	DESCRIPTION
0240	84002682	1	KIT, Plate, Detent
0430	84002683	3	KIT, Retainer, Chute
0440	84002681	1	KIT, Retainer, Gear

---

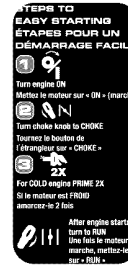
Not For Reproduction



0910



0920



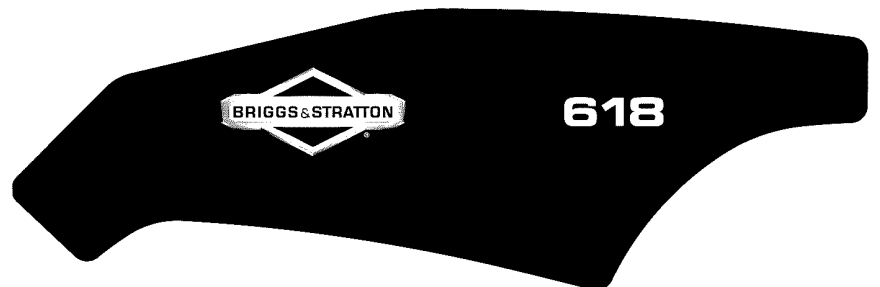
0930



0940



0950



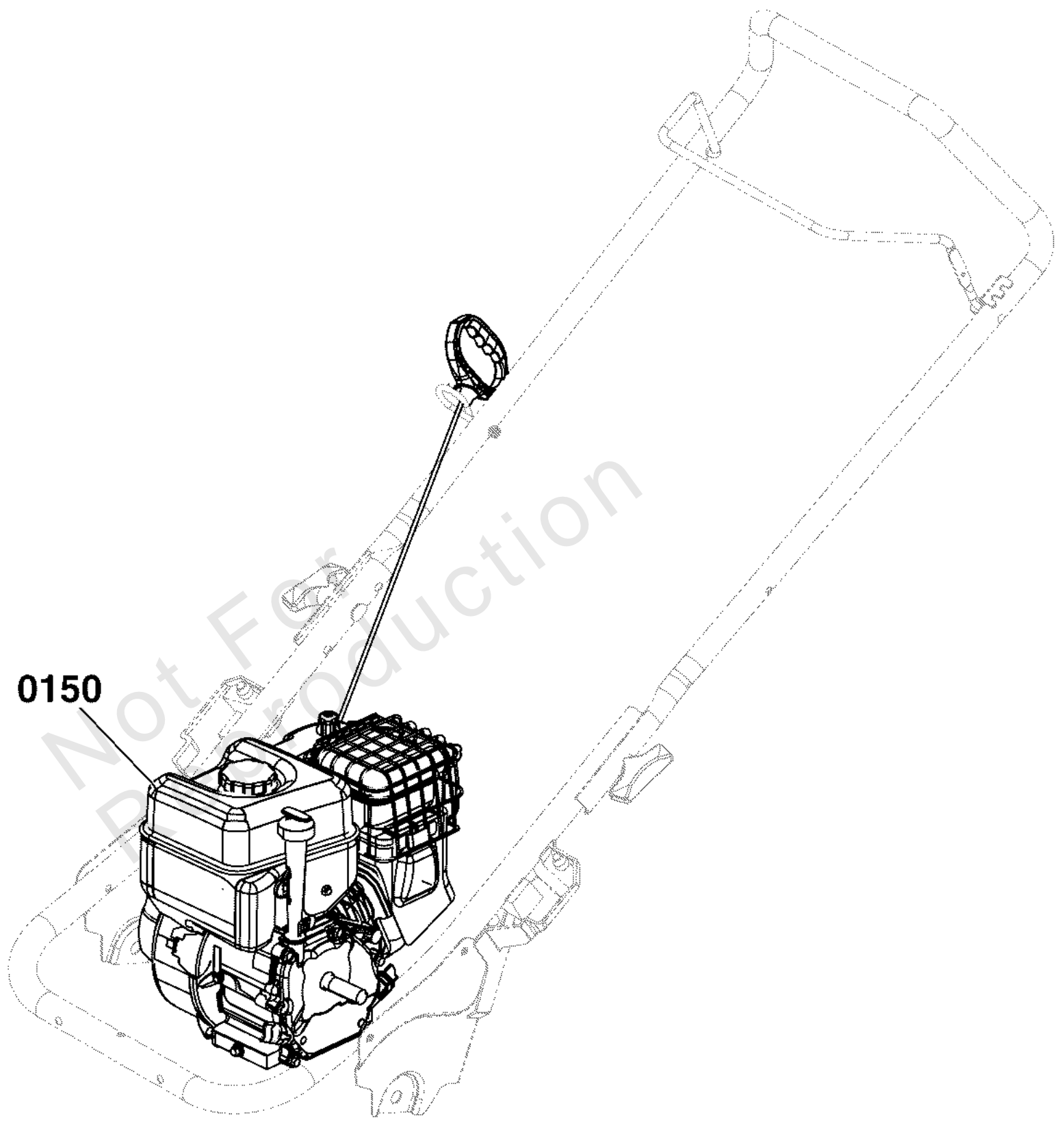
0945

## ***Decals Group Briggs & Stratton***

---

<b>REF NO</b>	<b>PART NO</b>	<b>QTY</b>	<b>DESCRIPTION</b>
0910	1737865YP	1	DECAL, Danger Chute Warning, FR/ENG
0920	1739966YP	1	DECAL, Chute, FR-EN
0930	1739970YP	1	DECAL, 1-2-3 Start, FR-EN
0940	1739977YP	1	DECAL, Bail Engagement
0945	84003629	1	DECAL, Logo, Briggs, LH
0946	84003630	1	DECAL, Logo, Briggs, RH
0950	84003631	1	DECAL, Model, Briggs, 618

Not For Reproduction



## Engine Group

---

REF NO	PART NO	QTY	DESCRIPTION
0150	08C132-8999-F1	1	ENGINE -(Engine Model: 08C132-8999-F1) (Refer to Note: *)

---

Not For  
Reproduction

---

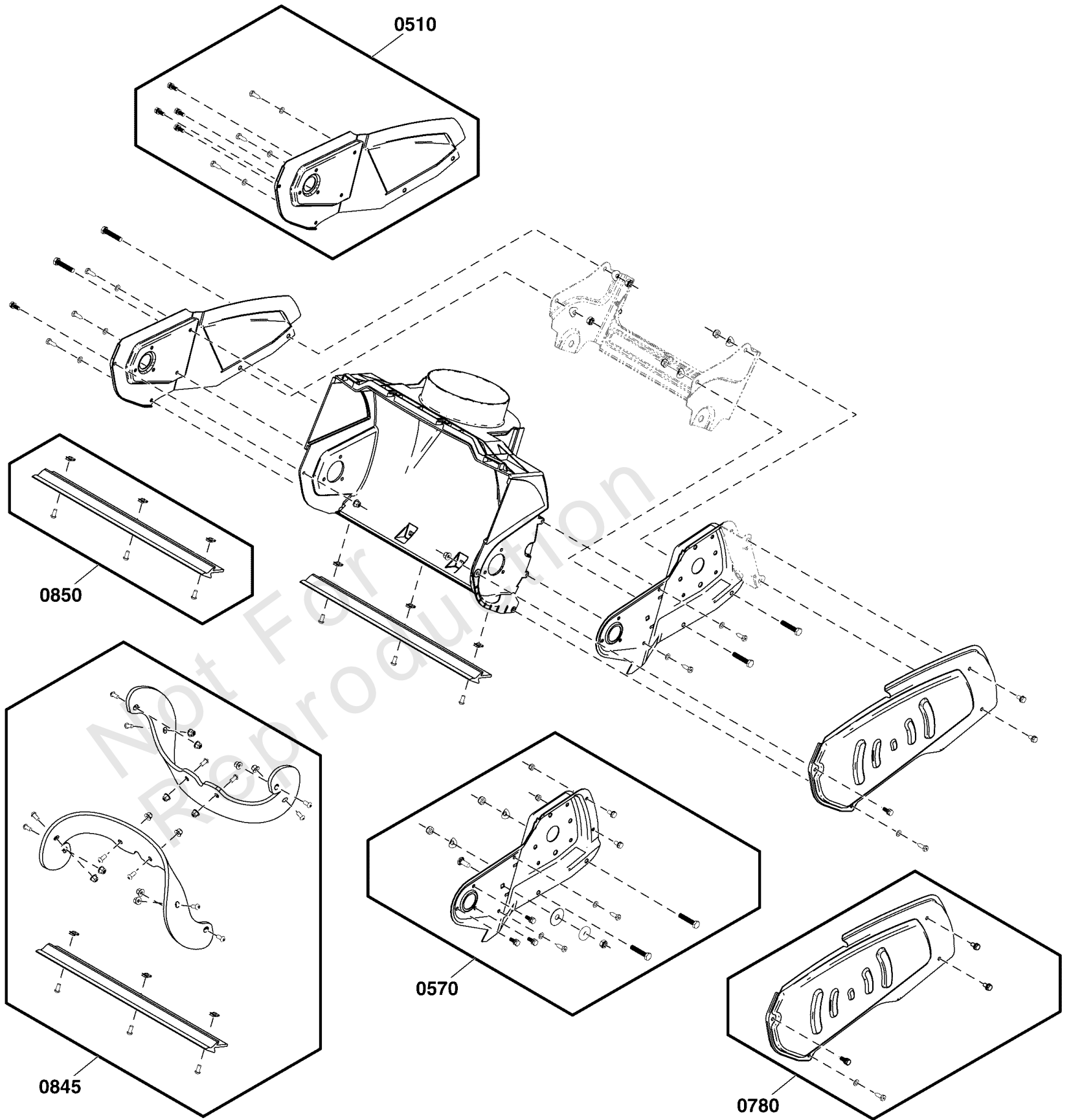
**Footnotes:**

Note\* To verify your specific engine model, please reference the ID Tag located on your engine. See your local Briggs & Stratton distributor for parts and service.

# Frame Group

Note: Unless noted otherwise, use the standard torque specifications

Mfg. No: 1697099-00



## Frame Group

REF NO	PART NO	QTY	DESCRIPTION
0510	84003276	1	KIT, Cover, Side
0570	84003277	1	KIT, Drive Housing
0780	84003279	1	KIT, Cover, Drive Housing
0845	84002676	1	KIT, Flight and Scraper Bar
0850	84002673	1	KIT, Scraper Bar

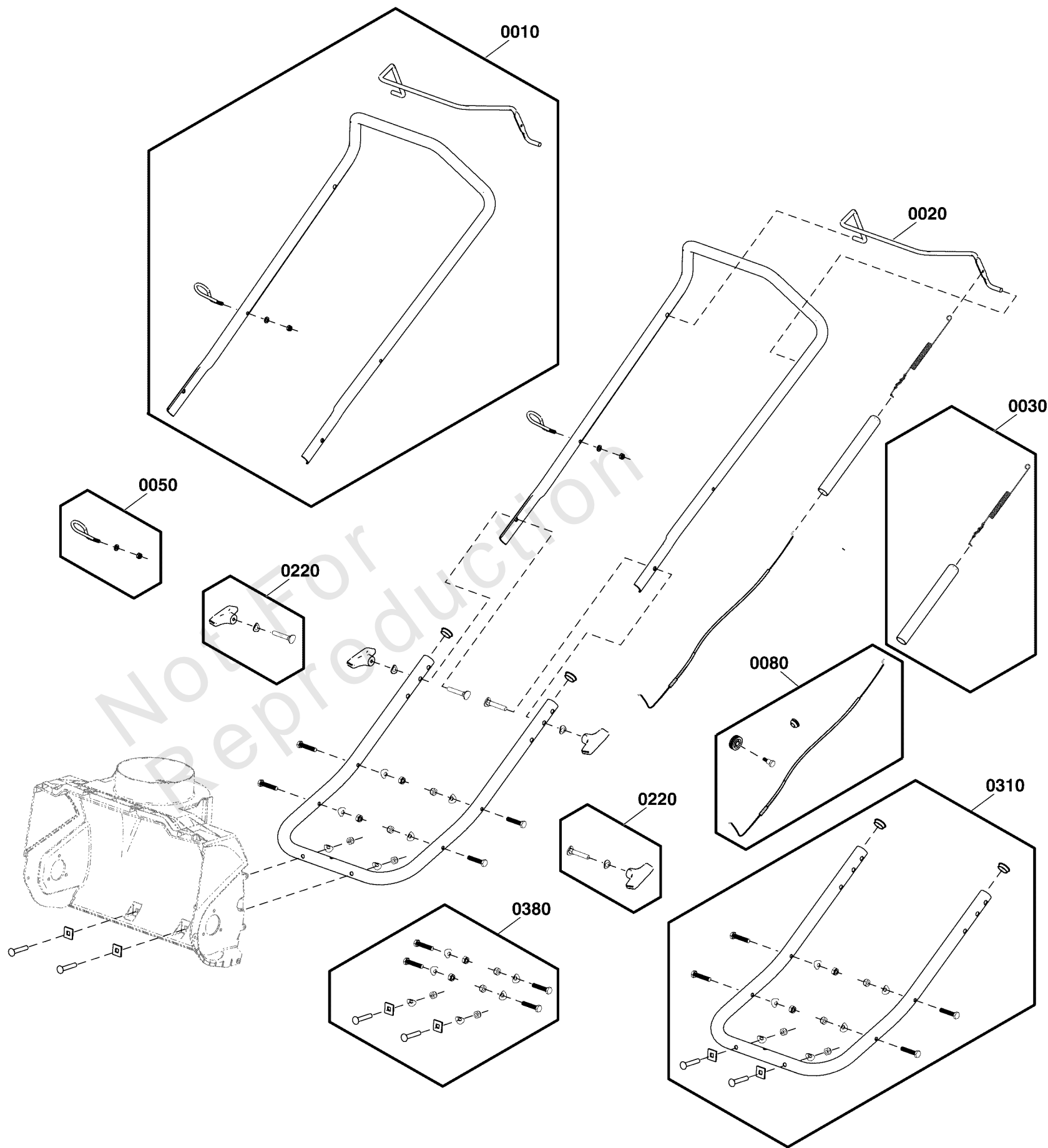
Not For Reproduction



# Handles & Controls Group

Note: Unless noted otherwise, use the standard torque specifications

Mfg. No: 1697099-00



## *Handles & Controls Group*

---

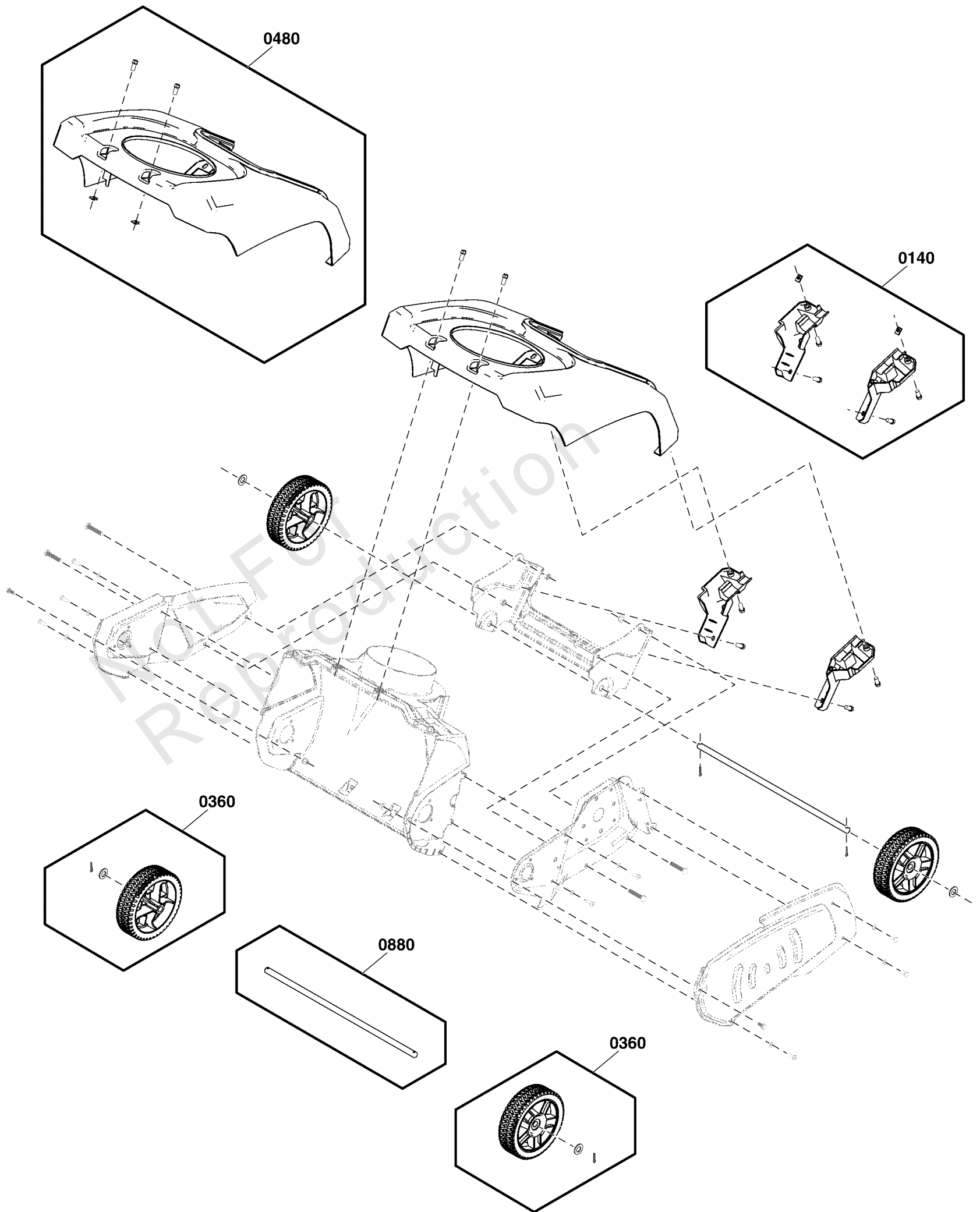
REF NO	PART NO	QTY	DESCRIPTION
0010	84003216	1	KIT, UPPER HANDLE
0020	84003269	1	ASSEMBLY, BAIL
0030	84003217	1	SPRING, LEVER
0050	84002745	1	GUIDE, ROPE
0080	84003272	1	KIT, Auger Cable Spool Control
0220	84002746	2	KIT, HARDWARE, HANDLE
0310	84003273	1	KIT, HANDLE, LOWER
0380	84002796	1	KIT, HARDWARE, HOUSING

Not For Reproduction

# Wheel & Body Covering Group

Note: Unless noted otherwise, use the standard torque specifications

Mfg. No: 1697099-00



## Wheel & Body Covering Group

---

REF NO	PART NO	QTY	DESCRIPTION
0140	84002666	1	KIT, MOUNTING PLATE
0360	84002657	2	KIT, WHEEL
0480	84003275	1	KIT, TOP COVER
0880	84003270	1	SHAFT, AXLE

---

Not For Reproduction

# Hardware Identification & Torque Specifications

Torque Specification Chart								
FOR STANDARD METRIC MACHINE HARDWARE (Tolerance ± 20%)								
Property Class	5.6		8.8		10.9		12.9	
	Class 5.6		Class 8.8		Class 10.9		Class 12.9	
Size Of Hardware	in/lbs	Nm.	in/lbs	Nm.	in/lbs	Nm.	in/lbs	Nm.
	ft/lbs		ft/lbs		ft/lbs		ft/lbs	
M3	5.88	.56	13.44	1.28	19.2	1.80	22.92	2.15
M4	13.44	1.28	30.72	2.90	43.44	4.10	52.56	4.95
M5	26.4	2.50	60.96	5.75	5.97	8.10	7.15	9.7
M6	44.64	4.3	7.3	9.9	10.3	14	12.1	16.5
M7	5.2	7.1	12.1	16.5	16.9	23	19.9	27
M8	7.7	10.5	17.7	24	25	34	29	40
M10	15	21	35	48	50	67	59	81
M12	26	36	61	83	86.2	117	103	140
M14	42	58	101	132	136	185	162	220
M16	64	88	147	200	210	285	250	340
M18	89	121	202	275	287	390	346	470
M20	126	171	290	390	405	550	486	660
M22	169	230	390	530	559	745	656	890
M24	217	295	497	375	708	960	840	1140
M27	320	435	733	995	1032	1400	1239	1680
M30	435	590	995	1350	1401	1900	1681	2280
M33	590	800	1349	1830	1902	2580	2278	3090
M36	759	1030	1740	2360	2441	3310	2935	3980
M39	988	1340	2249	3050	3163	4290	3798	5150

Torque Specification Chart						
FOR STANDARD MACHINE HARDWARE (Tolerance ± 20%)						
Hardware Grade	No Marks		SAE Grade 5		SAE Grade 8	
	SAE Grade 2		SAE Grade 5		SAE Grade 8	
Size Of Hardware	in/lbs	Nm.	in/lbs	Nm.	in/lbs	Nm.
	ft/lbs		ft/lbs		ft/lbs	
8-32	19	2.1	30	3.4	41	4.6
8-36	20	2.3	31	3.5	43	4.9
10-24	27	3.1	43	4.9	60	6.8
10-32	31	3.5	49	5.5	68	7.7
1/4-20	66	7.6	8	10.9	12	16.3
1/4-28	76	8.6	10	13.6	14	19.0
5/16-18	11	15.0	17	23.1	25	34.0
5/16-24	12	16.3	19	25.8	29	34.0
3/8-16	20	27.2	30	40.8	45	61.2
3/8-24	23	31.3	35	47.6	50	68.0
7/16-14	30	40.8	50	68.0	70	95.2
7/16-20	35	47.6	55	74.8	80	108.8
1/2-13	50	68.0	75	102.0	110	149.6
1/2-20	55	74.8	90	122.4	120	163.2
9/16-12	65	88.4	110	149.6	150	204.0
9/16-18	75	102.0	120	163.2	170	231.2
5/8-11	90	122.4	150	204.0	220	299.2
5/8-18	100	136	180	244.8	240	326.4
3/4-10	160	217.6	260	353.6	386	525.0
3/4-16	180	244.8	300	408.0	420	571.2
7/8-9	140	190.4	400	544.0	600	816.0
7/8-14	155	210.8	440	598.4	660	897.6
1-8	220	299.2	580	788.8	900	1,244.0
1-12	240	326.4	640	870.4	1,000	1,360.0

The guides and ruler furnished below are designed to help you select the appropriate hardware.

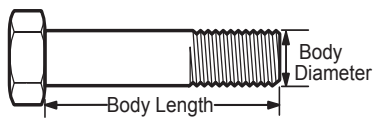


Nut, M8

Thread Diameter (mm)

Inside Diameter (in)      Threads per inch

Nut, 1/2-16



Screw, M8- 1.25 x 25

Thread Diameter (mm)      Distance between threads (mm)      Body Length (mm)

Body Diameter      Threads per inch      Body Length (in)

Screw, 1/2- 16 x 2



## Standard Hardware Sizing

When a washer or nut is identified as 1/2" (M8), this is the *Nominal size*, meaning the *inside diameter* is 1/2 inch (8mm metric thread diameter); if a second number is present it represents the *threads per inch* (distance between threads).

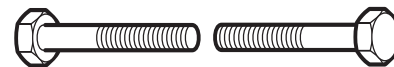
When bolt or capscrew is identified as 1/2 - 16 x 2" (M8 - 1.25 x 50), this means the *Nominal size*, or body diameter is 1/2 inch (8mm metric thread diameter), the second number, 16, represents the *threads per inch*, (*distance between threads*). The final number is the body length of the bolt or screw, 2 inches (50mm).

## NOTES

- These torque values are to be used for all hardware excluding: locknuts, self-tapping screws, thread forming screws, sheet metal screws and socket head setscrews.
- Recommended seating torque values for locknuts:
  - for prevailing torque locknuts - use 65% of grade 5 torques.
  - for flange whizlock nuts and screws - use 135% of grade 5 torques.
- Unless otherwise noted on assembly drawings, all torque values must meet this specification.

## Common Hardware Types

Hex Head Capscrew



Washer



Carriage Bolt



Hex Nut

## Wrench & Fastener Size Guide

1/4" Bolt or Nut Wrench—7/16"	5/16" Bolt or Nut Wrench—1/2"	3/8" Bolt or Nut Wrench—9/16"	7/16" Bolt or Nut Wrench (Bolt)—5/8" Wrench (Nut)—11/16"	1/2" Bolt or Nut Wrench—3/4"
M6 Bolt or Nut Wrench—10mm	M8 Bolt or Nut Wrench—13mm	M10 Bolt or Nut Wrench—17mm	M12 Bolt or Nut Wrench—19mm	M14 Bolt or Nut Wrench—22mm

