

# **POWERMATIC®**

## **Operating Instructions and Parts Manual Mobile Cyclone Dust Collector Model PM2200**

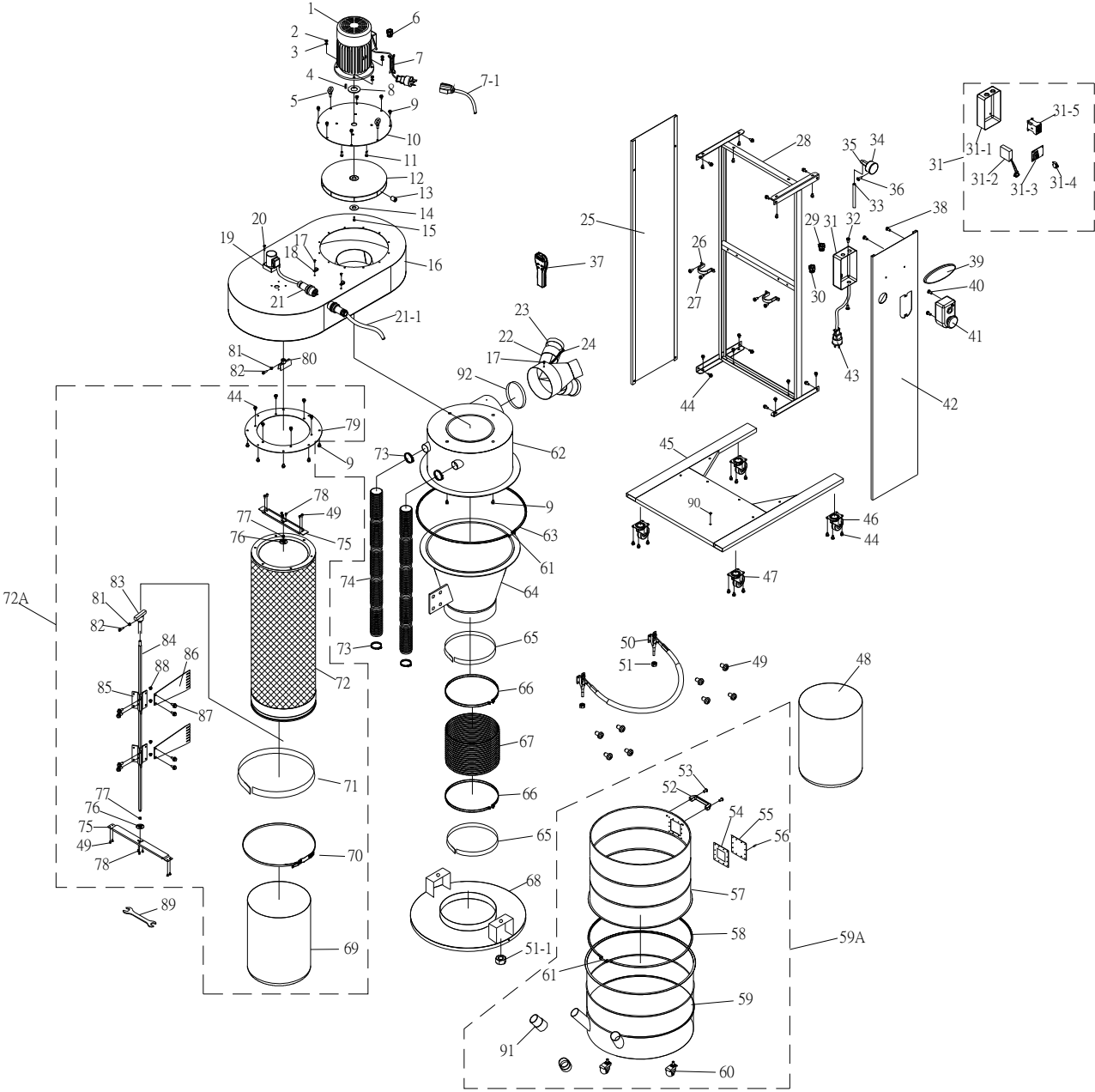


*For serial # 17090036 and higher*

**Powermatic**  
427 New Sanford Road  
LaVergne, Tennessee 37086  
Ph.: 800-274-6848  
[www.powermatic.com](http://www.powermatic.com)

**Part No. M-1792200B**  
Edition 4 12/2017  
Copyright © 2017 Powermatic

# 11.1.1 PM2200 Cyclone Dust Collector – Exploded View



## 11.1.2 PM2200 Cyclone Dust Collector – Parts List

Index No	Part No	Description	Size	Qty
1	PM2200-001	Motor	3HP, 230V	1
	PM2200-01SC	Start Capacitor (not shown)	250MFD, 250VAC	1
	PM2200-01RC	Running Capacitor (not shown)	35µF, 400V	1
	JCDC1.5-01FC	Fan Cover (not shown)		1
	JCDC1.5-01CF	Cooling Fan (not shown)		1
	JCDC3-01CS	Centrifugal Switch (not shown)		1
2	TS-0570021	Hex Nut	5/16"-18	4
3	TS-0720081	Lock Washer	5/16"	4
4	JCDC2-06	Key	7x7x25 mm	1
5	JCDC1.5-08	Eye Bolt	5/16"	2
6	JCDC1.5-02	Strain Relief	M20-13B/PG20	2
7	PM2200-007	Motor Cord with Male Connector		1
7-1	PM2200-0071	Motor Cord with Female Connector		1
8	JCDC2-07	Rubber Seal		1
9	TS-0081031	Hex Cap Screw	5/16"-18x3/4"	18
10	PM2200-010	Motor Plate		1
11	TS-0051051	Hex Cap Screw	5/16"-18x1"	4
12	PM2200-012	Impeller	Dia. 15.8"	1
13	TS-0271071	Socket Set Screw	3/8"-16x3/4"	1
14	PM2200-014	Impeller Washer		1
15	TS-1503051	Socket Head Cap Screw	M6x20	1
16	PM2200-016B	Main Housing ( <i>serial #17090036 and higher</i> )		1
17	TS-081C022	Pan HD Phillips Machine Screw	#10-24x3/8"	3
18	PM2200-018	Wire Clip	UC4	2
19	PM2200-019	Reducing Motor	15W, 230V	1
20	JBTS10MJS-620	Pan Head Screw	M4x60	4
21	PM2200-021	Reducing Motor Cord with Male Connector		1
21-1	PM2200-0211	Reducing Motor Cord with Female Connector		1
22	PM2200-022	Inlet	8"x4"x3	1
	PM2200-022A	Inlet Adaptor Assembly (#17,22 thru 24)		1
23	JCDC1.5-20	Inlet Adaptor Cap	4"	2
24	JCDC1.5-19	Chain		2
25	PM2200-025	Right Panel		1
26	PM2200-026	Hose Hanger		2
27	TS-081C022	Pan HD Phillips Machine Screw	#10-24x3/8"	4
28	PM2200-028B	Support Frame ( <i>serial #17090036 and higher</i> )		1
29	PM2200-029	Strain Relief	MP-16	1
30	JCDC1.5-02	Strain Relief	M20-13B/PG20	1
31	PM2200-031	Control Box Assembly (#31-1 thru 31-5)		1
31-1	PM2200-031-1	Control Box Back Cover		1
31-2	JCDC2-21-4	Remote Control Transmitter		1
31-3	PM2200-031CB	Circuit Board		1
31-4	JCDC3-21-6	Overload Protector	28A	1
31-5	PM2200-031-5	Contactors	MA-18	1
32	TS-2284082	Pan HD Phillips Machine Screw	M4-0.7x8	2
33	PM2200-033	Clear Hose	Dia. 8mm	1
34	PM2200-034	Negative Pressure Gauge		1
35	PM2200-035	Adaptor		1
36	TS-0267061	Socket Set Screw	1/4"-20x5/8"	1
37	PM2200-037	Remote Control Transmitter		1
		Battery (not shown)	AAA, 1.5V	2
38	TS-081F032	Pan HD Phillips Machine Screw	1/4"-20x1/2"	2
39	3520B-140	Powermatic Logo		1
40	5512797	Pan HD Phillips Machine Screw	M5-0.8x25	2
41	PM2200-041	ON-OFF Switch Assembly		1
	PM2000-298	Safety Key for Magnetic Switch (not shown)		1
42	PM2200-042	Left Panel		1
43	JCDC3-23	Power Cord w/ 6-20P plug	12AWG x 3C	1
44	F012439	Serrated Hex Flange Screw	5/16"-18x1/2"	42
45	PM2200-045B	Base ( <i>serial #17090036 and higher</i> )		1

Index No	Part No	Description	Size	Qty
46	JCDC3-33	Swivel Caster	3"	2
47	JCDC3-33-1	Swivel Caster w/ Brake	3"	2
48	717531	Drum Collection Bag (pkg. of 5)	980 x 1200 /mm	1
49	JMS10SCMS-72	Pan HD Phillips Machine Screw	M5-0.8x8	16
50	PM2200-050	Quick Lever Assembly		1
51	TS-0561082	Hex Nut	3/8"-16	2
51-1	TS-0640091	Nylon Lock Hex Nut	3/8"-16	2
52	JCDC1.5-42	Handle		1
53	TS-081F031	Flat Head Phillips Mach Screw	1/4"-20x1/2"	2
54	JCDC1.5-44	Rubber Pad		1
55	JCDC1.5-45	PC Plate		1
56	JCDC1.5-46	Rivet	4-2	12
57	PM2200-057	Upper Collection Drum		1
58	PM2200-058	Drum Clamp		1
59	PM2200-059	Lower Collection Drum		1
59A	PM2200-059A	Collection Drum Assembly (#52 thru 61, 91)		1
60	JCDC2-49	Swivel Caster	2"	4
61	TS-0050111	Hex Cap Screw	1/4"-20x2-1/2"	2
62	PM2200-062	Housing		1
63	JCDC2-35	Clamp	Dia. 500mm	1
64	PM2200-064	Cone		1
65	JCDC2-39	Foam Tape	L970 x W30 x T1 /mm	2
66	JCDC2-40	Hose Clamp	12-1/2"	2
67	JCDC2-41	Hose	Dia. 12"	1
68	PM2200-068	Drum Lid		1
69	717511	Canister Collection Bag (pkg. of 5)	600 x 500 /mm	1
70	JCDC1.5-60	Clamp		1
71	JCDC1.5-59	Foam Tape	L1265 x W20 x T3 /mm	1
72	PM2200-072H	Canister Filter – HEPA		1
72A	1792200H	HEPA Filter, complete (includes #44,49,69-72,75-79,81-88)		1
73	PM2200-073	Hose Clamp	Dia. 2"	4
74	PM2200-074	Hose	Dia. 2"	2
75	JCDC1.5-69	Support Plate		2
76	JCDC1.5-63	Bearing Cover		2
77	JCDC1.5-62	Oil-retaining Bearing		2
78	JCDC1.5-52	Socket HD Button Screw	M5x6	6
79	PM2200-079	Canister Fixing Plate		1
80	PM2200-080	Rod Kit		1
81	TS-1540031	Hex Nut	M5	2
82	TS-1522041	Socket Set Screw	M5-0.8x12	2
83	PM2200-083	Rod		1
84	PM2200-084	Spindle		1
85	JCDC1.5-65	Fixing Block		2
86	JCDC1.5-66	Scraper		2
87	TS-1481031	Hex Cap Screw	M5-0.8x12	8
88	TS-1540031	Hex Nut	M5-0.8	4
89	SWSS3-201	Open End Wrench	10-12 mm	1
90	5711571	Pan HD Phillips Machine Screw	3/16"x1/4"	1
91	PM2200-091	Quick Connector		2
92	PM2200-092	Foam Tape	L640 x W30 x T1/mm	1