



**BOSCH**

# Pn-Screwdriver - Ind.

180 WATT-SERIE | 0 607 453 006

---

## Table of Content

Spare parts list.....	2
Illustration - Type.....	4

Illustration - Type - E

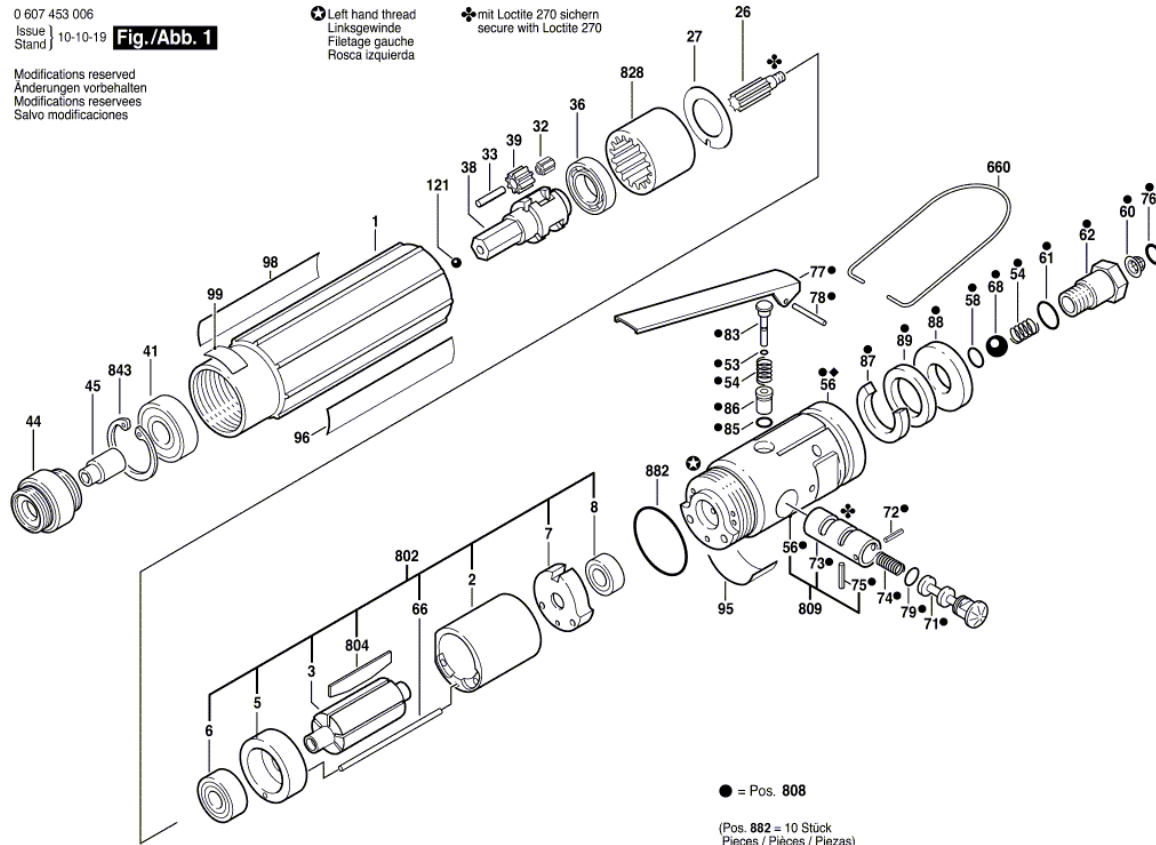
0 607 453 006  
Issue | 10-10-19  
Stand |

**Fig./Abb. 1**

Modifications reserved  
Änderungen vorbehalten  
Modifications reserves  
Salvo modificaciones

⊖ Left hand thread  
Linksgewinde  
Filetage gauche  
Rosca izquierda

✦ mit Loctite 270 sichern  
secure with Loctite 270



● = Pos. 808

(Pos. 882 = 10 Stück  
Pieces / Pièces / Piezas)