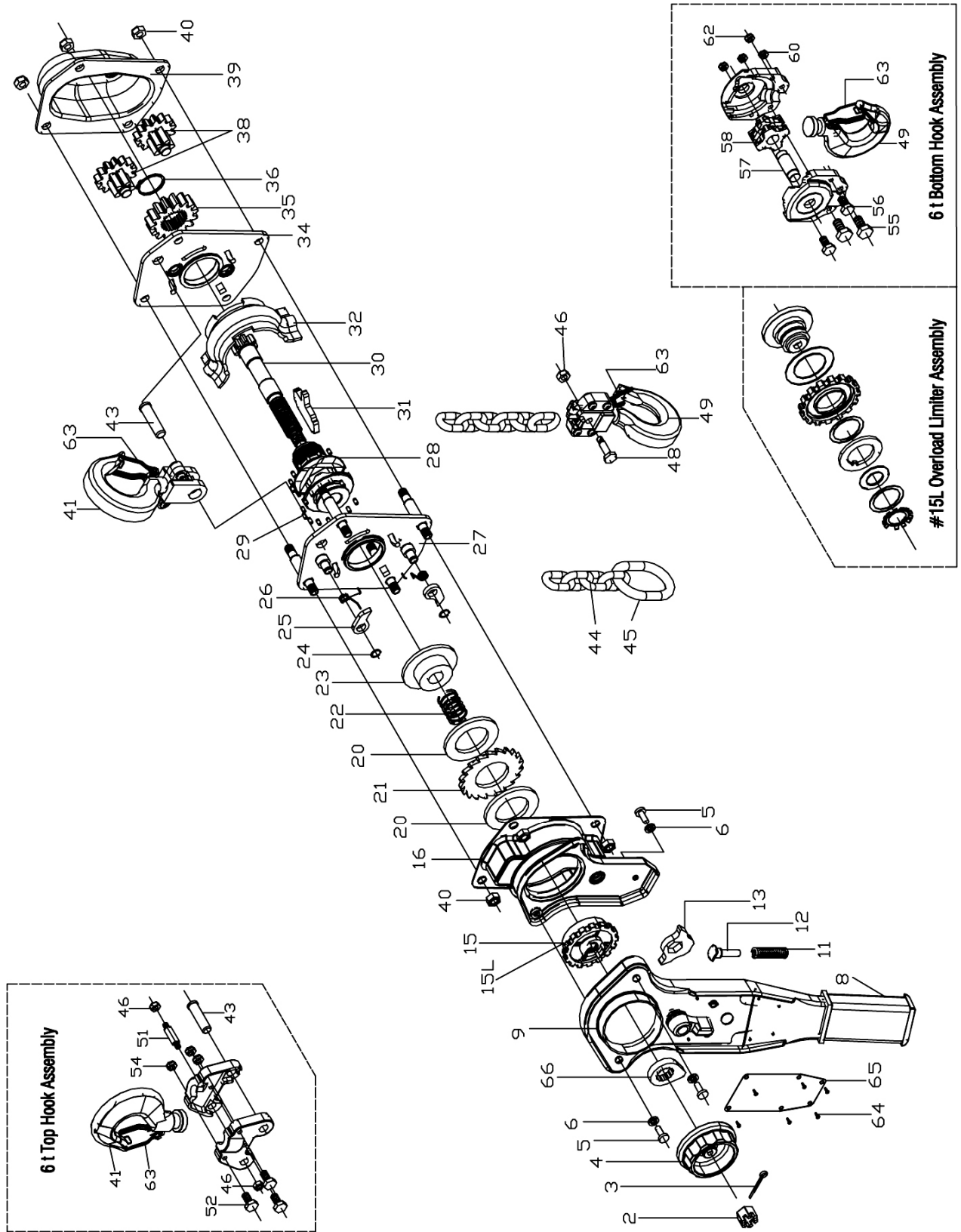


JLP-75A through JLP-600A – Parts Breakdown



JLP-150A – Parts List

Index No.	Part No.	Description	Size	Qty
2	JLP150A-02	Castle Nut (1.5T, 3T, 6T)	M10	1
3	JLP150A-03	Split Pin (1.5T, 3T, 6T)	2.5x25 mm	1
4	JLP150A-04	Handwheel (1.5T, 3T, 6T)		1
5	JLP150A-05	Hex Head Screw (1.5T, 3T, 6T)	M8	3
6	JLP150A-06	Spring Washer (1.5T, 3T, 6T)	Ø8 mm	3
8	JLP150A-08	Rubber Grip (1.5T, 3T, 6T)		1
9	JLP150A-09	Lever Handle Assembly (1.5T, 3T, 6T)		1
		Selector Lever		1
		Rubber Grip		1
		Change Over Spring Seat		1
		Reinforced Screw Nut		1
		Rivet		2
11	JLP150A-11	Change Over Spring (1.5T, 3T, 6T)		1
12	JLP150A-12	Spring Shaft (1.5T, 3T, 6T)		1
13	JLP150A-13	Change Over Pawl (1.5T, 3T, 6T)		1
15	JLP150A-15	Change Over Gear (1.5T, 3T, 6T)		1
*15L	JLP150A-15L	Overload Limiter Assembly		1
		Overload Limiter Plate		1
		Friction Disc A		1
		Change Over Gear		1
		Friction Disc B		1
		Pressure Plate		1
		Dish Spring		1
		Disc		1
		Disc Spring Stopper		1
		Adjusting Nut	M30	1
16	JLP150A-16	Brake Cover Assembly		1
		Brake Cover		1
		Handle Case		1
		Bushing		1
		Screw Nut		2
20	JLP150A-20	Friction Disc (1.5T, 3T, 6T)		2
21	JLP150A-21	Ratchet Disc (1.5T, 3T, 6T)		1
22	JLP75A-22	Twisting Spring (0.75T, 1.5T, 3T, 6T)		1
23	JLP150A-23	Brake Seat (1.5T, 3T, 6T)		1
24	JLP150A-24	Snap Ring	Ø9 mm	2
25	JLP150A-25	Pawl		2
26	JLP150A-26	Pawl Spring		2
27	JLP150A-27	Lever Side Plate Assembly		1
		Lever Side Plate		1
		Stay Bolt		4
		Pawl Pin		2
		Bearing Race		1
28	JLP150A-28	Load Sprocket		1
29	JLP150A-29	Roller Set (Right and Left)	Ø3x6 mm	74
30	JLP150A-30	Driving Pinion		1
31	JLP150A-31	Stripper		1
32	JLP150A-32	Chain Guide Plate		1
34	JLP150A-34	Gear Side Plate Assembly		1
		Gear Side Plate		1
		Bearing Race		1
		Bushing		2
35	JLP150A-35	Load Gear		1
36	JLP150A-36	Snap Ring	Ø30 mm	1
38	JLP150A-38	Spur Gear Assembly		2

Index No.	Part No.	Description	Size	Qty
39	JLP150A-39	Gear Cover Assembly		1
		Gear Cover		1
		Bushing		2
		Gear Cover Plate		1
40	JLP75A-40	Lock Nut (0.75T, 1.5T)	M8	8
41	JLP150A-41	Top Hook Assembly		1
		Top Hook		1
		Top Hook Holder		1
		Safety Latch Kit		1
		Top Hook Shaft		1
43	JLP150A-43	Top Hook Shaft		1
44	JLP150A-44	Load Chain – <i>specify length</i>	Ø8x24 mm	1
45	JLP75A-45	Chain Stop (0.75T, 1.5T, 3T, 6T)		1
46	JLP150A-46	Load Pin Nut	M8	1
48	JLP150A-48	Load Pin		1
49	JLP150A-49	Bottom Hook Assembly		1
		Bottom Hook		1
		Bottom Hook Holder		1
		Safety Latch Kit		1
		Rivet		4
		Load Pin		1
		Load Pin Nut	M8	1
63	JLP150A-63	Safety Latch Kit		2
		Safety Latch		2
		Double Spring		2
		Socket Cap Screw	M5x25	2
		Lock Nut	M5	2
64	JLP75A-64	Name Plate Rivet (0.75T, 1.5T, 3T, 6T)	Ø3x6 mm	4
65	JLP150A-65	Name Plate		1
66	JLP150A-66	Stop Knob (1.5T, 3T, 6T)		1

Note: All parts mentioned as assembly are sold as an assembly only.

When ordering replacement chain (#44), specify length.