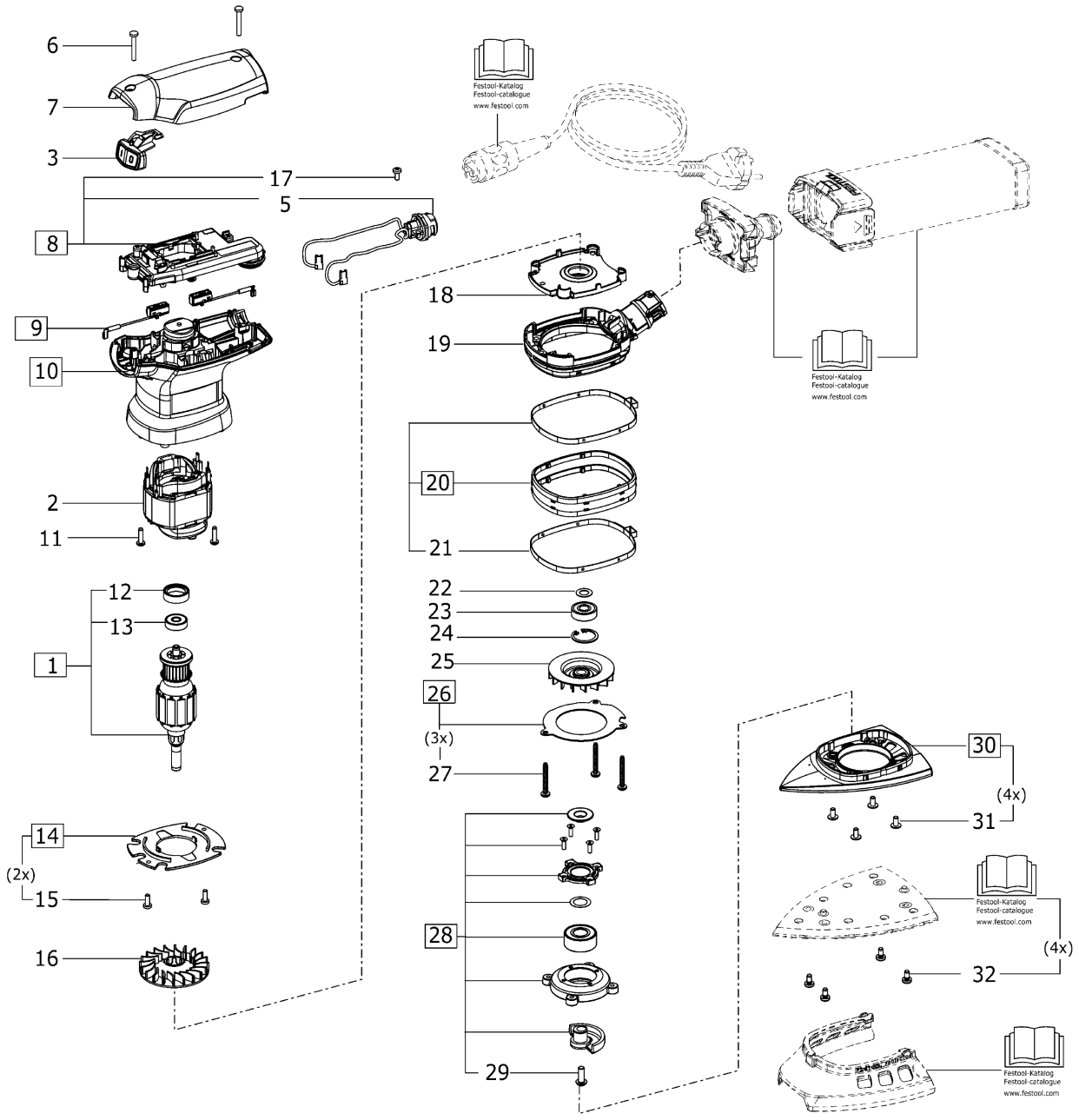


# 201414 - DTS 400 REQ



| <b>Pos</b> | <b>Part No.</b> | <b>Description</b>            | <b>Quantity</b> |
|------------|-----------------|-------------------------------|-----------------|
| 1          | 201897          | Armature                      | 1               |
| 2          | 201899          | Field assembly                | 1               |
| 3          | 10021901        | Switching jack                | 1               |
| 5          | 708213          | Socket housing                | 1               |
| 6          | 219068          | Raised-head screw 3,5 x 25 mm | 2               |
| 7          | 10021835        | Cap                           | 1               |
| 8          | 201901          | Electronic                    | 1               |
| 9          | 201903          | Brush holder                  | 1               |
| 10         | 202388          | Housing                       | 1               |
| 11         | 228584          | Raised-head screw 3,5 x 14 mm | 2               |
| 12         | 450508          | Rubber ring                   | 1               |
| 13         | 228672          | Ball bearing                  | 1               |
| 14         | 489522          | Air guide washer              | 1               |
| 15         | 219031          | Raised-head screw 3,5 x 10 mm | 2               |
| 16         | 469328          | Fan                           | 1               |
| 17         | 219047          | Raised-head screw 3,5 x 8 mm  | 1               |
| 18         | 10022448        | insert                        | 1               |
| 19         | 10019350        | Bearing cover                 | 1               |
| 20         | 489184          | Collar                        | 1               |
| 21         | 453707          | Clamping strap                | 2               |
| 22         | 400884          | Shim ring                     | 1               |
| 23         | 401525          | Ball bearing                  | 1               |
| 24         | 204471          | Snap ring                     | 1               |
| 25         | 10028628        | Aspirator                     | 1               |
| 26         | 489185          | Plate                         | 1               |
| 27         | 400528          | Raised-head screw 4,0 x 30 mm | 3               |
| 28         | 201904          | Bearing flange                | 1               |
| 29         | 401150          | Raised-head screw             | 1               |
| 30         | 493722          | Plate                         | 1               |
| 31         | 401063          | Cheese-head screw             | 4               |
| 32         | 400663          | Raised-head screw M4 x 10     | 4               |