



SERVICE PARTS LIST

BULLETIN NO.
54-07-0015

SPECIFY CATALOG NO. AND SERIAL NO. WHEN ORDERING PARTS				REVISED BULLETIN	DATE
M12™ 7.8 KP THERMAL IMAGER					Dec. 2015
CATALOG NO.	2258-21	SERIAL NUMBER	F77A	WIRING INSTRUCTION	

EXAMPLE:

00	0
----	---

 Component Parts (Small #) Are Included
 When Ordering The Assembly (Large #).

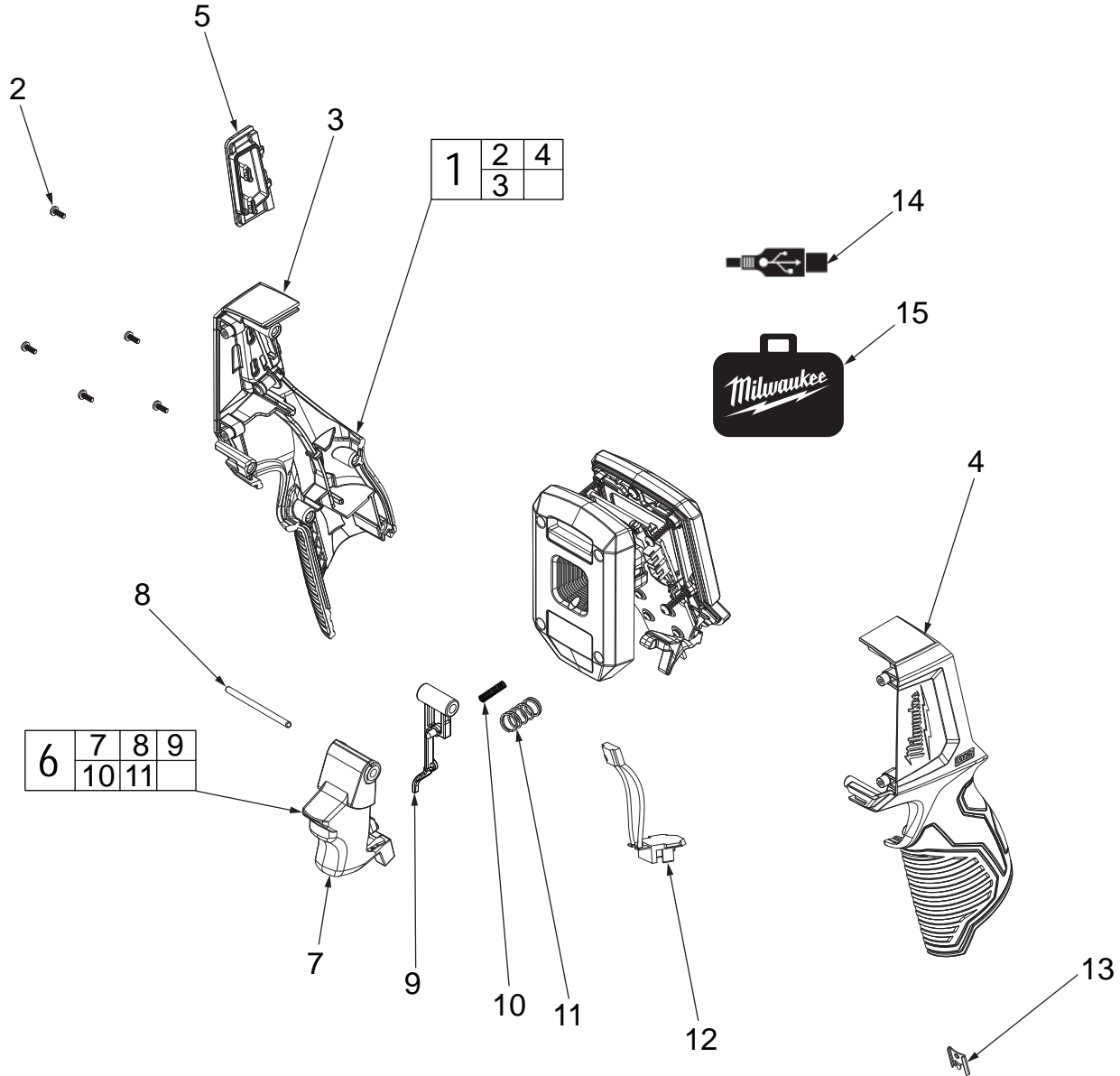


FIG.	PART NO.	DESCRIPTION OF PART	NO. REQ.	FIG.	PART NO.	DESCRIPTION OF PART	NO. REQ.
1	31-44-0058	Housing w/ Screws	(1)	10	-----	Small Trigger Spring	(1)
2	-----	M3 x 12 T-8 Pan Hd. Screw	(5)	11	-----	Large Trigger Spring	(1)
3	-----	Right Housing	(1)	12	23-94-0028	Terminal Block	(1)
4	-----	Left Housing	(1)	13	42-70-0058	Housing Clip	(1)
5	42-92-0051	SD Card Door	(1)	14	42-44-0012	USB Cable (18")	(1)
6	45-72-0025	Trigger Assembly	(1)	15	42-55-0022	Nylon Soft Case	(1)
7	-----	Trigger	(1)	16	12-20-2258	Service Nameplate (Not Shown)	(1)
8	-----	Trigger Pin	(1)	17	10-20-2202	Laser Warning Label (Not Shown)	(1)
9	-----	Trigger Rocker	(1)	18	43-86-0007	Protective Boot (Not Shown)	(1)