



# SERVICE PARTS LIST

**BULLETIN NO.**  
**54-30-0460**

<b>SPECIFY CATALOG NO. AND SERIAL NO. WHEN ORDERING PARTS</b>		REVISED BULLETIN	DATE
<b>POWER/CONTROL BOX ASSEMBLY (ROUTER)</b>			Dec. 2005
CATALOG NO. <b>23-37-0175</b>	SERIAL NUMBER	WIRING INSTRUCTION <b>SEE REVERSE SIDE</b>	

**EXAMPLE:**  

00	0
----	---

 Component Parts (Small #)  
 Are Included When Ordering  
 The Assembly (Large #).

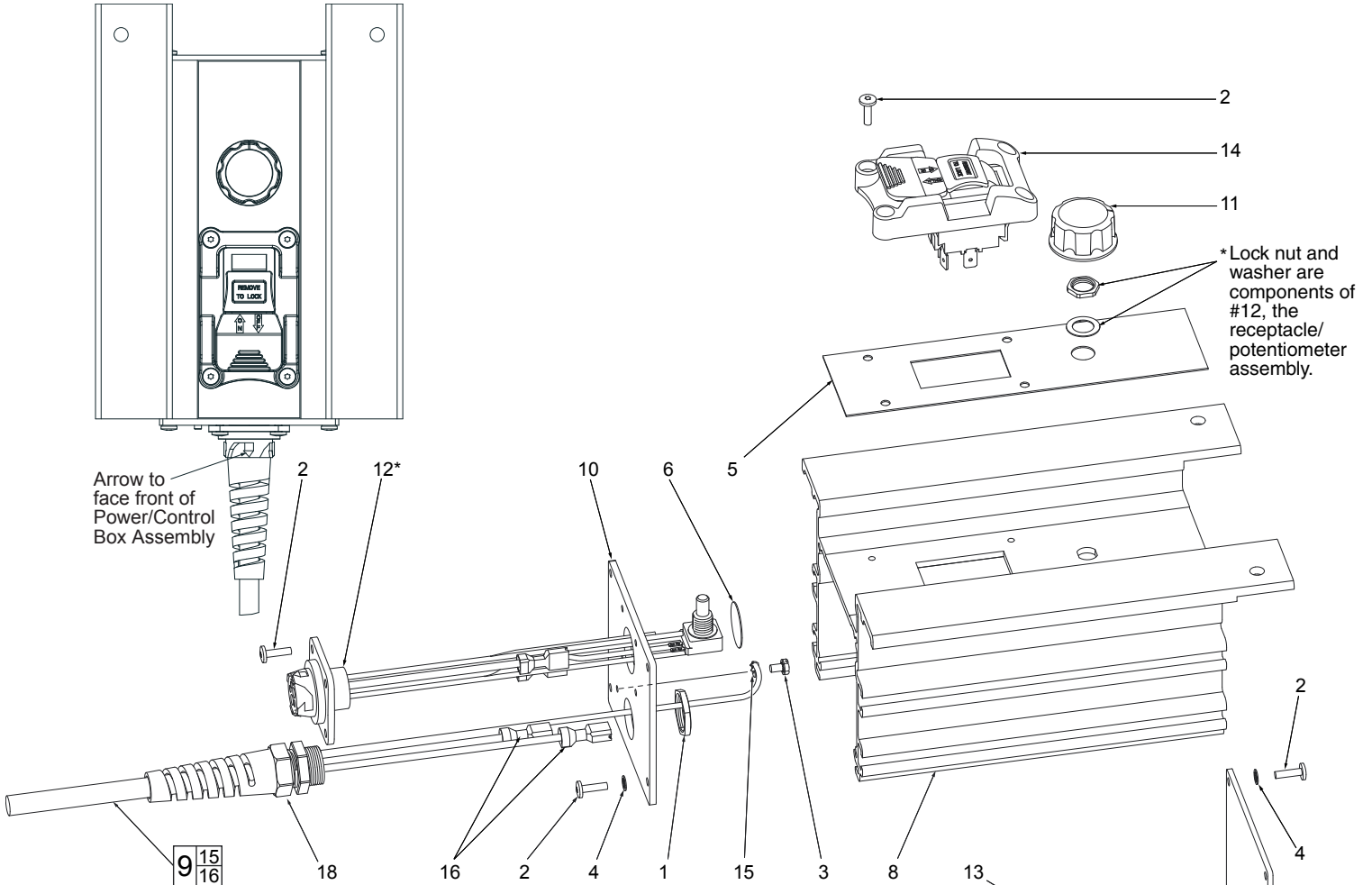


FIG.	PART NO.	DESCRIPTION OF PART	NO. REQ.
1	06-57-5020	Lock Nut	(1)
2	06-95-0080	6-32 x 1/2" Truss Hd. Taptite T-10	(16)
3	06-95-5150	6-32 x 1/4" Slit. Hex Hd. Sems	(1)
4	06-97-1800	#6 Internal Lock Washer	(8)
5	-----	Power/Control Box Label	(1)
6	10-98-3030	Ground Label	(1)
7	-----	Nameplate	(1)
8	22-12-0075	Electrical Box Body	(1)
9	22-64-0445	Cord Assembly (Includes 15 & 16)	(1)
10	22-68-0075	Electrical Box Cover	(1)
11	23-18-0075	Speed Dial	(1)
12	23-33-0505	Receptacle/Potentiometer Assembly	(1)
13	23-35-0075	Electrical Box Panel	(1)
14	23-66-0155	Paddle Switch Assembly w/Lockout	(1)
15	23-74-0850	Ground Terminal	(1)
16	23-74-0970	Terminal	(2)
17	23-78-0100	Cable Tie	(1)
18	-----	Pigtail Fitting	(1)