



SERVICE PARTS LIST

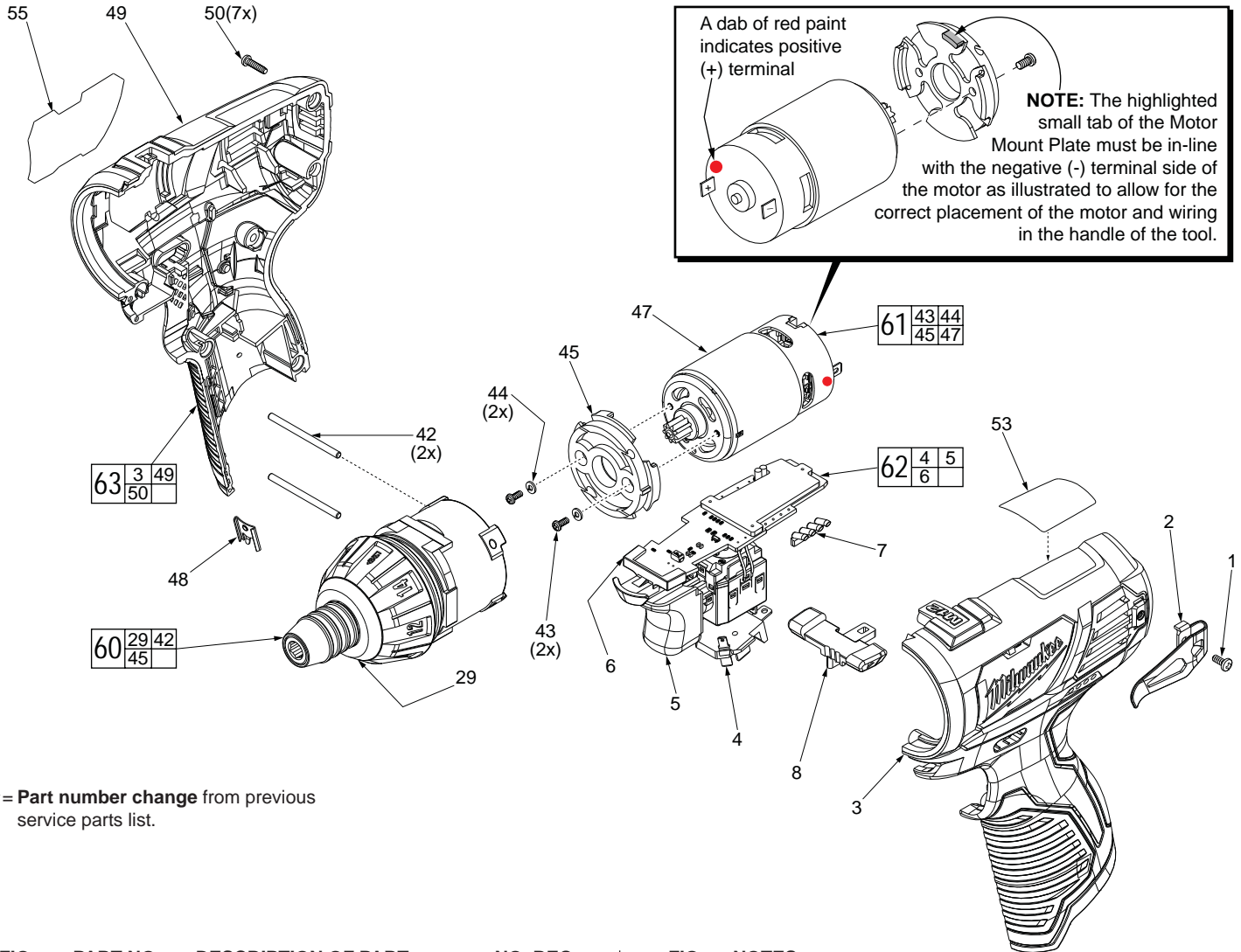
BULLETIN NO.
54-42-2402

SPECIFY CATALOG NO. AND SERIAL NO. WHEN ORDERING PARTS		REVISED BULLETIN	DATE
M12™ Sub-Compact 1/4" Hex Screwdriver		54-42-2401	Feb. 2014
CATALOG NO. 2401-20	STARTING SERIAL NO. B30C	WIRING INSTRUCTION SEE REVERSE SIDE	

EXAMPLE:

00	0
----	---

 Component Parts (Small #) Are Included When Ordering The Assembly (Large #).



★ = Part number change from previous service parts list.

FIG.	PART NO.	DESCRIPTION OF PART	NO. REQ.
	05-88-1010	M2.5 x 6mm Pan Hd. Phillips Screw	(1)
★ 2	42-70-0580	Belt Clip	(1)
★ 3	-----	Housing Halve- Left	(1)
★ 4	-----	Battery Contact Plate	(1)
★ 5	-----	Switch	(1)
★ 6	-----	PCB Assembly	(1)
★ 7	31-01-0003	Light Pipe	(1)
★ 8	45-24-0096	Forward/Reverse Button	(1)
★ 29	-----	Gearcase and Gearing	(1)
42	06-65-0502	M2.5 x 37mm Steel Pin	(2)
43	05-81-0205	M3 x 6mm Pan Hd. Phillips Screw	(2)
44	45-88-1980	Spring Washer	(2)
45	44-66-0155	Motor Mount Plate	(1)
★ 47	-----	Motor with Pinion	(1)
48	42-70-0058	Housing Clip	(1)
★ 49	-----	Housing Halve- Right	(1)
50	06-82-1080	M3 x 14mm Pan Hd. T-10 ST Screw	(7)
★ 53	10-20-0958	Warning Label	(1)
55	12-20-2510	Service Nameplate	(1)
★ 60	14-29-0096	Gearcase Assembly	(1)
★ 61	23-30-0096	Motor Assembly	(1)
★ 62	23-66-1097	Variable Electronics Switch Assembly	(1)
★ 63	31-50-2401	Housing Assembly	(1)

FIG.	NOTES:
43	Seating Torque is to be 6-12 kgf-cm (5-10.5 in-lbs).
45,60,61	Service replacement gearcase assembly (60) comes with a motor mount plate (45) that must be removed and discarded when servicing. A motor mount plate already exists on the motor assembly (61).
53,55	A clean, dry surface is essential for proper performance for any adhesive system. The area intended for application of any adhesive label or nameplate must be prepared by cleaning with isopropyl alcohol. The solvent is to be applied with a clean, lint free applicator and the surface allowed to dry before applying the label or nameplate.



AS AN AID TO REASSEMBLY, TAKE NOTICE OF WIRE ROUTING AND POSITION IN WIRE GUIDES AND TRAPS WHILE DISMANTLING TOOL.

BE SURE THAT ALL COMPONENTS OF THE ELECTRONICS KIT ARE SEATED FIRMLY AND SQUARELY IN THE HANDLE RECESSES.

AVOID PINCHED WIRES, BE SURE THAT ALL WIRES AND SLEEVES ARE PRESSED COMPLETELY DOWN IN WIRE GUIDES AND TRAPS.

PRIOR TO INSTALLING THE HANDLE COVER ONTO THE HANDLE SUPPORT, BE SURE THAT THERE ARE NO INTERFERENCES.