



# SERVICE PARTS LIST

**BULLETIN NO.**  
54-12-1402

SPECIFY CATALOG NO. AND SERIAL NO. WHEN ORDERING PARTS		REVISED BULLETIN 54-12-1401	DATE April '86
<b>1-1/4" ELECTRIC DRILL</b>			
<b>CATALOG NO. 2404-1</b>	<b>STARTING SERIAL NO. 568-4100</b>	<b>WIRING INSTRUCTION 58-01-0566</b>	

FOR CAT. NO. 2404-3  
(240V) TOOL USE:  
16-76-0110 ARMATURE  
18-76-0070 FIELD  
22-64-4155 CORD SET

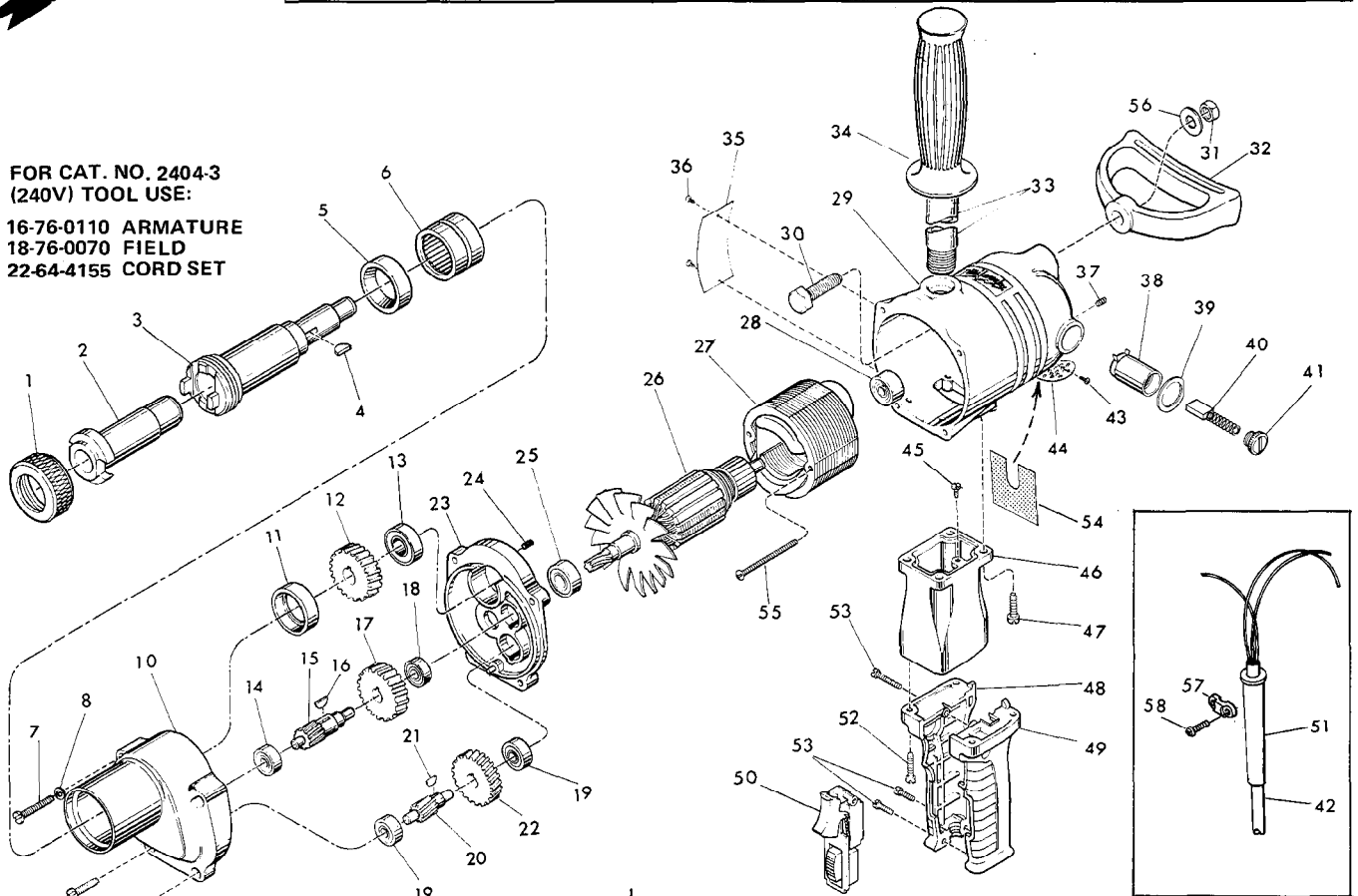


FIG.	PART NO.	DESCRIPTION OF PART	NO. REQ.
	1	42-52-0050 Taper Socket Cap	(1)
	2	45-34-0050 No. 3 Taper Socket	(1)
*	3	38-50-5460 Spindle	(1)
	4	06-42-2400 Woodruff Key	(1)
*	5	45-06-0380 Oil Seal	(1)
*	6	02-50-9970 Needle Bearing	(1)
	7	06-81-1975 1/4-20 x 2-1/4 Fil. Hd. Screw	(2)
	8	06-97-3800 Lock Washer	(2)
	9	06-81-7900 1/4-20 x 1-1/2 Fil. Hd. Sem	(2)
*	10	28-14-1940 Gear Case	(1)
	11	42-24-0070 Thrust Bearing	(1)
	12	32-75-1261 Spindle Gear	(1)
	13	02-20-1720 Ball Bearing	(1)
	14	02-04-1210 Ball Bearing	(1)
	15	36-66-0571 Pinion Shaft	(1)
	16	06-42-2000 Woodruff Key	(1)
	17	32-44-1101 Intermediate Gear	(1)
	18	02-04-1020 Ball Bearing	(1)
	19	02-04-0910 Ball Bearing	(2)
	20	36-66-0551 Pinion Shaft	(1)
	21	06-42-1200 Woodruff Key	(1)
	22	32-42-1201 Intermediate Gear	(1)
	23	28-28-1181 Diaphragm (Includes 06-65-1206 Groove Pin & Rig. No. 24)	(1)
	24	45-30-0070 Bearing Retaining Slug	(3)
	25	02-04-1260 Ball Bearing	(1)
	26	16-70-0110 120V Reversing Armature	(1)
	27	18-70-0070 120V Field	(1)
	28	02-04-1070 Ball Bearing	(1)

FIG.	PART NO.	DESCRIPTION OF PART	NO. REQ.
	29	28-50-4161 Motor Housing (Includes 45-30-0110 BB Rtnng. Slug & Fig. Nos. 30 & 31)	(1)
	30	06-75-0850 1/2-13 x 1-1/2 Hex Hd. Screw	(1)
	31	06-55-2850 1/2-13 Hex Nut	(1)
	32	31-44-1050 Spade Handle	(1)
	33	43-62-0120 Pipe Handle	(1)
*	34	43-62-0246 Handle Grip	(1)
*	35	12-15-7010 Service Nameplate	(1)
	36	06-85-0200 6 x 1/4 Nameplate Screw	(2)
	37	06-83-2650 1/4-20 x 3/8 Knrl. Set Screw	(2)
	38	22-22-1015 Brush Holder	(2)
	39	23-86-0060 Fiber Washer	(2)
	40	22-18-0055 Carbon Brush	(2)
	41	23-44-0030 Brush Retaining Screw	(2)
	42	22-64-0120 Cord Set	(1)
	43	06-81-8650 6-32 x 1/4 Ground Screw	(1)
	44	44-66-0180 Cover Plate	(1)
	45	06-81-8625 1/4-20 x 3/4 Fil. Hd. Sem	(4)
	46	28-86-1601 Handle Spacer	(1)
	47	06-81-7800 1/4-20 x 3/4 Fil. Hd. Sem	(4)
*	48	31-44-1440 Right Hand Handle Half	(1)
*	49	31-44-1445 Left Hand Handle Half	(1)
	50	23-66-0581 Switch	(1)
	51	44-76-0150 Cord Protector	(1)
*	52	06-82-5358 12 - 24 x 3/4" Pan Hd. Taprite Screw	(4)
*	53	06-82-7326 8-16 x 1" Plastite Screw	(3)
	54	23-16-0830 Arc Insulator	(1)
	55	06-81-9190 10-24 x 2-1/4 Rd. Hd. Screw	(2)
	56	45-88-0310 Flat Washer	(1)
	57	31-17-0156 Cord Clamp	(1)
	58	06-95-0216 8-16 x 5/8" Plastite Screw	(2)
	59	10-98-5986 Caution Label (Not Shown)	(1)