



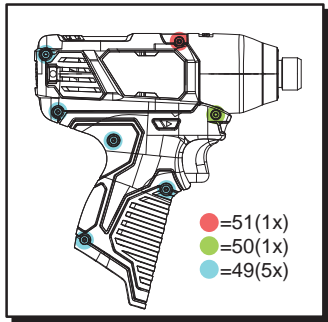
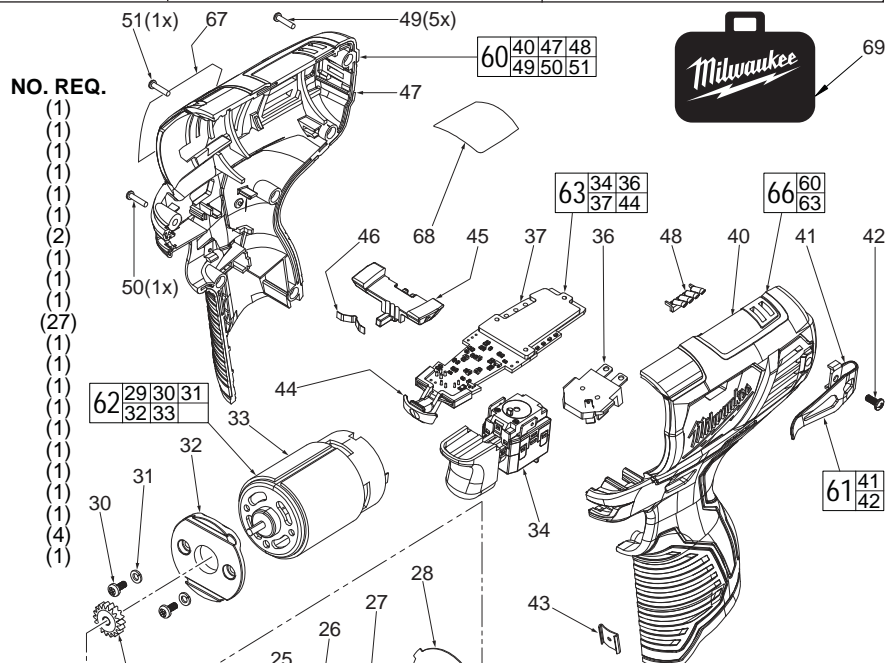
# SERVICE PARTS LIST

BULLETIN NO.  
55-26-2410

SPECIFY CATALOG NO. AND SERIAL NO. WHEN ORDERING PARTS		REVISED BULLETIN	DATE
<b>M12™ 1/4" HEX IMPACT WRENCH</b>			June 2013
CATALOG NO.	2462-059	STARTING SERIAL NO.	F37A
			WIRING INSTRUCTION <b>SEE PAGE 2</b>

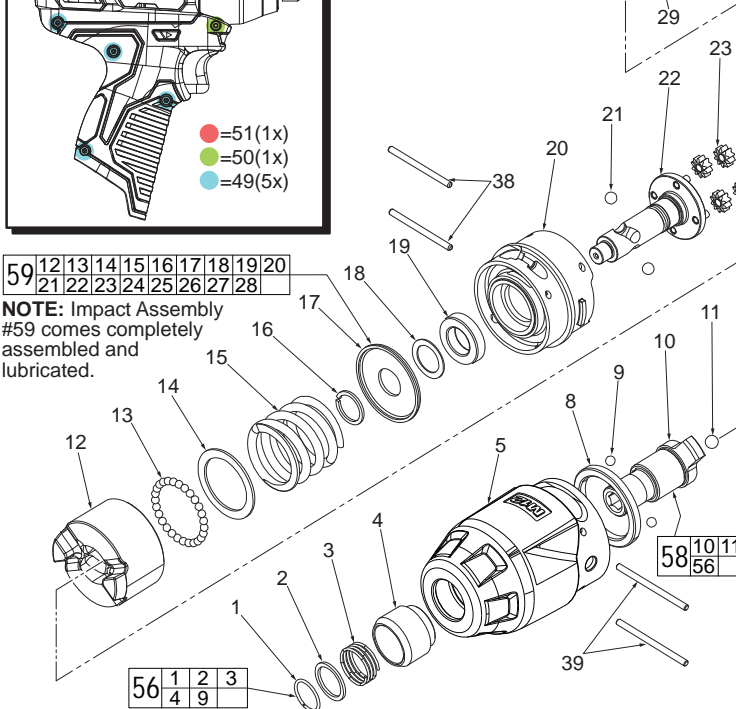
**EXAMPLE:**  
00 0 Component Parts (Small #) Are Included  
When Ordering The Assembly (Large #).

FIG.	PART NO.	DESCRIPTION OF PART
1	-----	Retaining Ring
2	-----	Washer
3	-----	Spring
4	-----	Sleeve
5	14-30-0135	Gearcase Assembly with Bushing
8	45-88-2135	Nylon Ring
9	02-02-0170	3.5mm Steel Ball
10	-----	1/4" Hex Anvil
11	02-02-1300	5.0mm Steel Ball
12	-----	Hammer
13	-----	3.0mm Steel Ball
14	-----	Washer
15	-----	Compression Spring
16	-----	Retaining Ring
17	-----	Washer
18	-----	Washer
19	-----	Ball Bearing
20	-----	Gear Housing
21	-----	4.7mm Steel ball
22	-----	Cam Shaft
23	-----	2nd Stage Planet Gear
24	-----	2nd Stage Ring Gear



59	12	13	14	15	16	17	18	19	20
	21	22	23	24	25	26	27	28	

**NOTE:** Impact Assembly #59 comes completely assembled and lubricated.



**IMPORTANT:**  
If during Motor replacement the gearing from the Impact Assembly becomes dislodged, it is to be noted that the Ring Gears #24 and #27 and the Planet Gears #23 and #26 look the same but are different! The 1st stage gearing (26 and 27) are marked with etched holes as shown. The 2nd stage gearing will not have these markings.

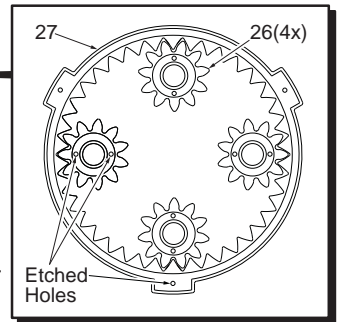


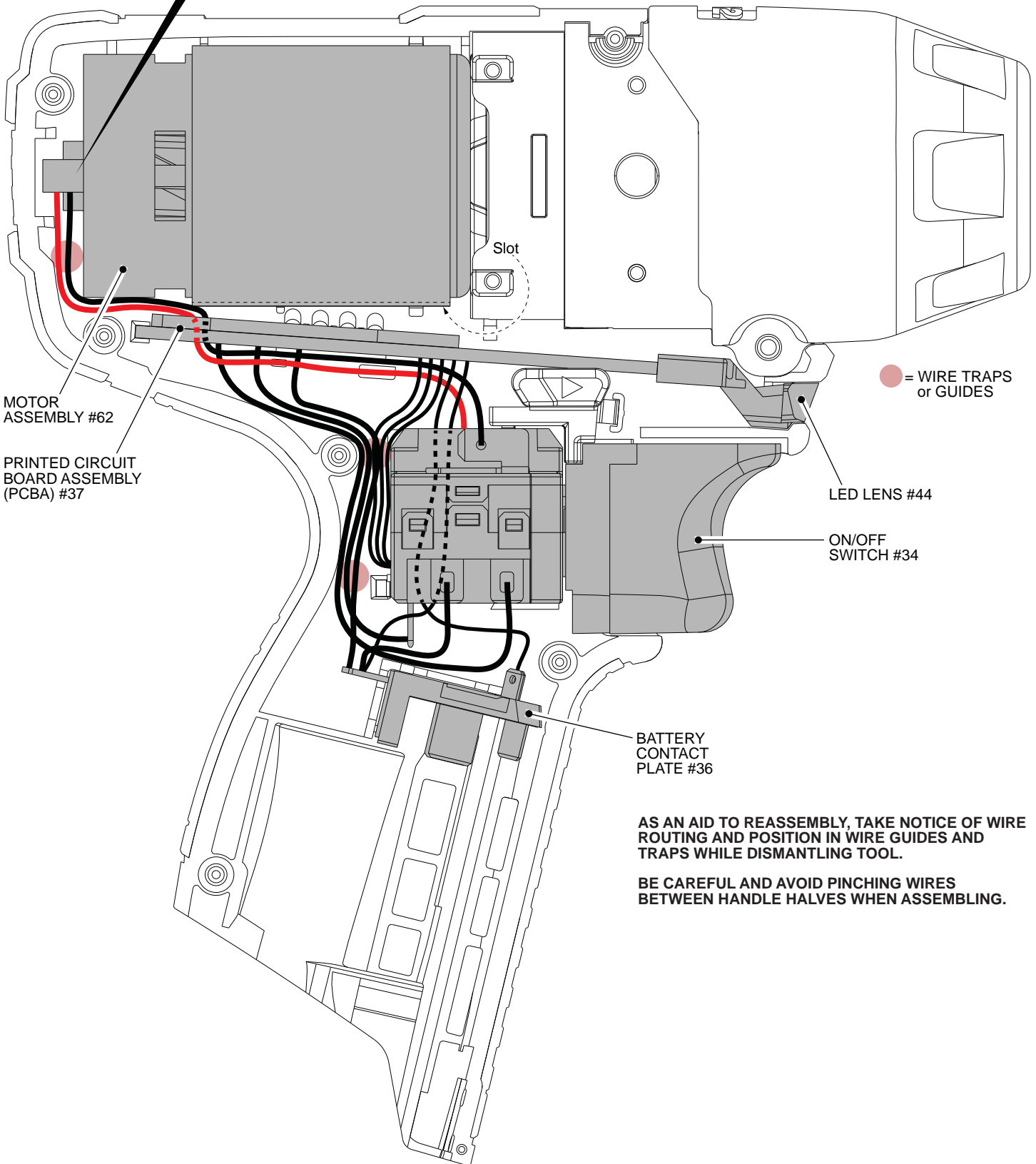
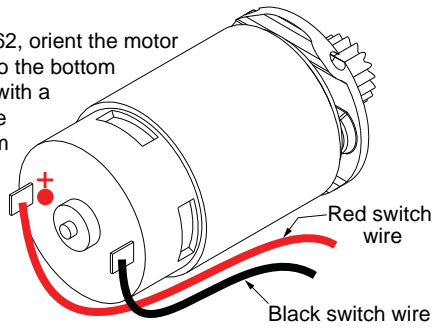
FIG.	PART NO.	DESCRIPTION OF PART	NO. REQ.
25	-----	2nd Stage Sun Gear and Carriage	(1)
26	-----	1st Stage Planet Gear	(4)
27	-----	1st Stage Ring Gear	(1)
28	-----	Washer	(1)
29	-----	Motor Pinion	(1)
30	-----	M3.0 Screw	(2)
31	-----	Lock Washer	(2)
32	-----	Motor Mounting Bracket	(1)
33	-----	Motor	(1)
34	-----	Switch	(1)
36	-----	Battery Contact Plate	(1)
37	-----	PCBA	(1)
38	06-65-0022	M2.5 x 30mm Pin	(2)
39	06-65-0502	M2.5 x 36.7mm Pin	(2)
40	-----	Left Handle Halve	(1)
41	-----	Belt Clip	(1)

FIG.	PART NO.	DESCRIPTION OF PART	NO. REQ.
42	-----	M3.0 Screw	(1)
43	42-70-0055	Housing Clip	(1)
44	-----	LED Lens	(1)
45	45-24-0077	Forward/Reverse Shuttle	(1)
46	40-50-1135	Spring Plate	(1)
47	-----	Right Handle Halve	(1)
48	31-01-0003	Light Pipe	(1)
49	06-82-1080	M3 x 14mm Pan Hd. Plast. T-10 Screw	(5)
50	06-82-6350	M3 x 16mm Pan Hd. Plast. T-10 Screw	(1)
51	06-82-7336	M3 x 20mm Pan Hd. Plast. T-10 Screw	(1)
56	45-22-0035	Sleeve and Ball Assembly	(1)
58	42-06-1015	Sleeve and 1/4" Hex Anvil Assembly	(1)
59	14-29-0032	Impact Assembly	(1)
60	31-50-0005	Handle Set	(1)
61	42-70-0490	Belt Clip Assembly	(1)
62	23-30-0430	Motor Assembly	(1)
63	23-66-0212	Electronics Assembly	(1)
66	31-50-0315	Handle/Electronics Assembly	(1)
67	-----	Service Nameplate	(1)
68	10-20-2952	Warning Label	(1)
69	42-55-2461	Carrying Case	(1)

**FIG. LUBRICATION**  
(Type 'J' Grease, No. 49-08-4220):  
5 Coat inside of bushing inside front gearcase with grease.  
10 Lightly coat front washer surface of anvil (10) with grease.  
29 Coat pinion of motor assembly (62) with grease.

**NOTE:**

When installing Motor Assembly #62, orient the motor with the slot in the motor canister to the bottom and the positive terminal (marked with a red dot) to the inside of Left Handle Halve #40. Solder the red wire from the top left position of the switch to the positive motor terminal. Solder the black wire from the top right position of the switch to the negative terminal on motor.



● = WIRE TRAPS or GUIDES

**AS AN AID TO REASSEMBLY, TAKE NOTICE OF WIRE ROUTING AND POSITION IN WIRE GUIDES AND TRAPS WHILE DISMANTLING TOOL.**

**BE CAREFUL AND AVOID PINCHING WIRES BETWEEN HANDLE HALVES WHEN ASSEMBLING.**