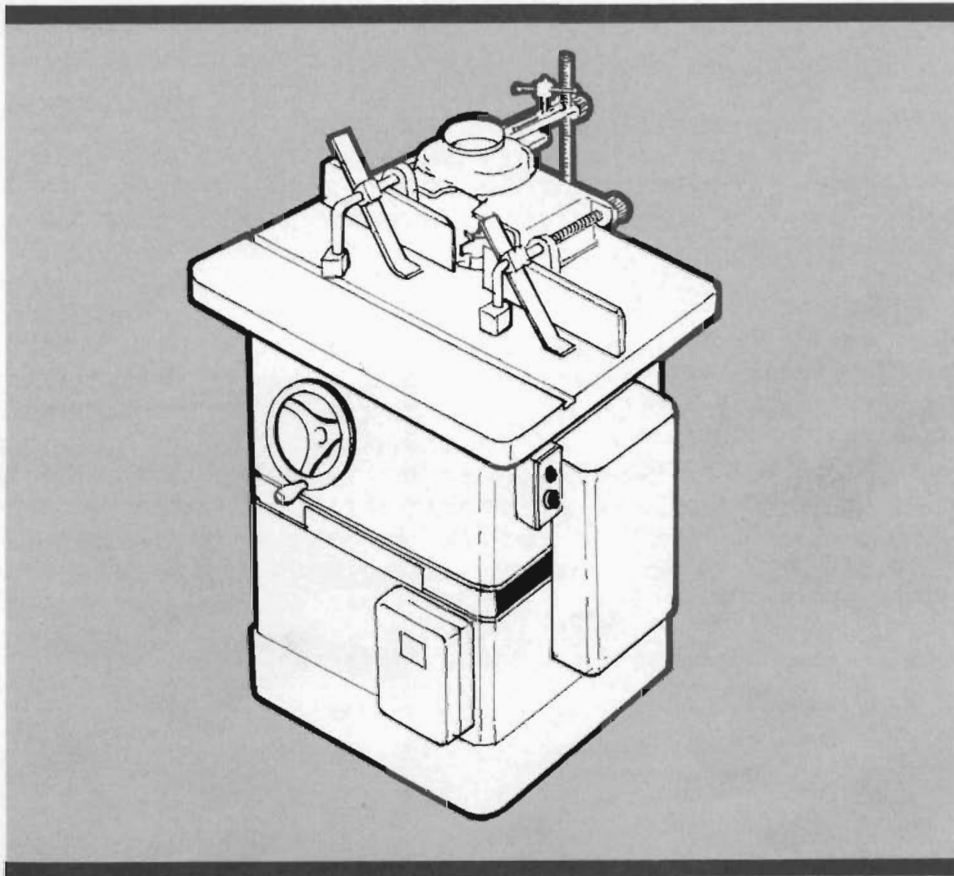


Model 26 SHAPER

MAINTENANCE INSTRUCTIONS AND PARTS LIST



Better By DesignTM

POWERMATIC[®] *PMI*[®]

McMINNVILLE, TENNESSEE 37110 ☐ AC 615-473-5551

PARTS LIST : Stand & Table

ITEM NO.	PART NO.	DESCRIPTION	QTY.	ITEM NO.	PART NO.	DESCRIPTION	QTY.
	2195003	FENCE ASSY., SHAPER (ITEMS 1 THRU 19)		39	3063009	BRACKET, SWITCH MTG.	1
	2695008	SCREW, LOCK ASSY. (ITEMS 1 THRU 3)		40	3595013	PLATE, SHAPER TABLE	1
1	3268002	HANDLE	2	41	3585014	PIN, STARTER	1
2	3695003	SCREW, LOCK	1	42	3696201	SCREW, SET	3
3	3406016	KNOB, HANDLE	1	43	6714037	SCR., FILLISTER HD., 1/4-20 X 1" (PLATED)	3
4	6515007	NUT, HEX JAM, 5/16-18	4	44	3328202	INSERT, RING	1
5	6861205	WASHER, FLAT, 5/16" ZINC PLATED	4	45	3078007	CAP	1
6	3063074	BRACKET, MOUNTING, FENCE SHAPER, R.H.	1		2388035	KIT PLATE, SHAPER (ITEMS 46 THRU 51)	
7	3195007	FENCE, BOARD	2	46	6680020	RIVET, SOUTHCO ALUM., 5/32 X 1/4" LG.	2
8	6715051	SCR., FLAT HD. MACH., 5/16-18 X 1/2" (ZINC PLATED)	4	47	3312251	I.D. PLATE, POWERMATIC	1
9	3838203	WASHER, BEVEL, LOCK SCR.	2	48	3312228	I.D. PLATE, SERIAL & MODEL NUMBER	1
10	6811281	SPACER, 3/8 X 5/8 X .032"	4	49	6747000	SCR., DRIVE, No. 4 X 3/16" (NICKEL PLATED)	2
11	6715013	SCR., SOC. SET, CUP PT., 5/16-18 X 3/8"	2	50	3408206	LABEL, CAUTION SPINDLE SHIPPED DRY (NOT SHOWN)	1
12	6715025	SCR., SOC. HD. CAP, 5/16-18 X 3/4"	2	51	3330283	PLATE, SAFETY (NOT SHOWN)	1
13	6714004	SCR., SOC. SET, CUP PT., 1/4-20 X 1/4"	2				
14	3406005	KNOB, ADJUSTING SCREW	2				
15	3690005	SCREW, ADJUSTING	2				
16	3064035	BRACKET, FENCE	2				
17	3250060	GUARD, SHAPER BODY	1				
18	6716012	SCR., SOC. HD. CAP, 3/8-16 X 1"	2				
19	3063073	BRACKET, MOUNTING, FENCE SHAPER, L.H.	1				
	2136001	DOOR ASSY. (ITEMS 20 & 21)					
20	6440003	LATCH, No. 61-1-1-0	1				
21	2136004	DOOR ASSY. (WELDMENT)	1				
	2689001	SCALE ASSY., HEIGHT ADJ. (ITEMS 22 & 23)					
22	3481012	PLATE, MTG., HEIGHT ADJ.	1				
23	3684203	SCALE, PLATE	1				
	2271004	HANDWHEEL ASSEMBLY (ITEMS 24 THRU 27)					
24	6624006	PIN, GROOVE, 1/4 X 3" LG.	1				
25	3268201	HANDLE	1				
26	3271051	HANDWHEEL, 6" DIA.	1				
27	6715013	SCR., SOC. STE, 5/16-18 X 3/8"	1				
28	6714057	SCR., FLAT HD., 1/4-20 X 1-1/4"	2				
29	6514001	NUT, HEX, 1/4-20	2				
30	6861100	WASHER, LOCK, 1/4"	2				
31	3186008	EXTENSION, 8" TABLE	1				
32	6861300	WASHER, LOCK, 3/8"	6				
33	6716031	SCR., HEX HD., 3/8-16 X 1"	6				
34	6861301	WASHER, FLAT, 3/8"	9				
35	2759006	STAND ASSY., SHAPER (WELDMENT)	1				
36	3797042	TABLE, SHAPER	1				
37	2104003	COVER ASSY., MOTOR (WELDMENT)	1				
38	6746023	SCR., HEX HD., 1/4-20 X 5/8" (SELF-TAPPING)	8				

PARTS: Exploded View

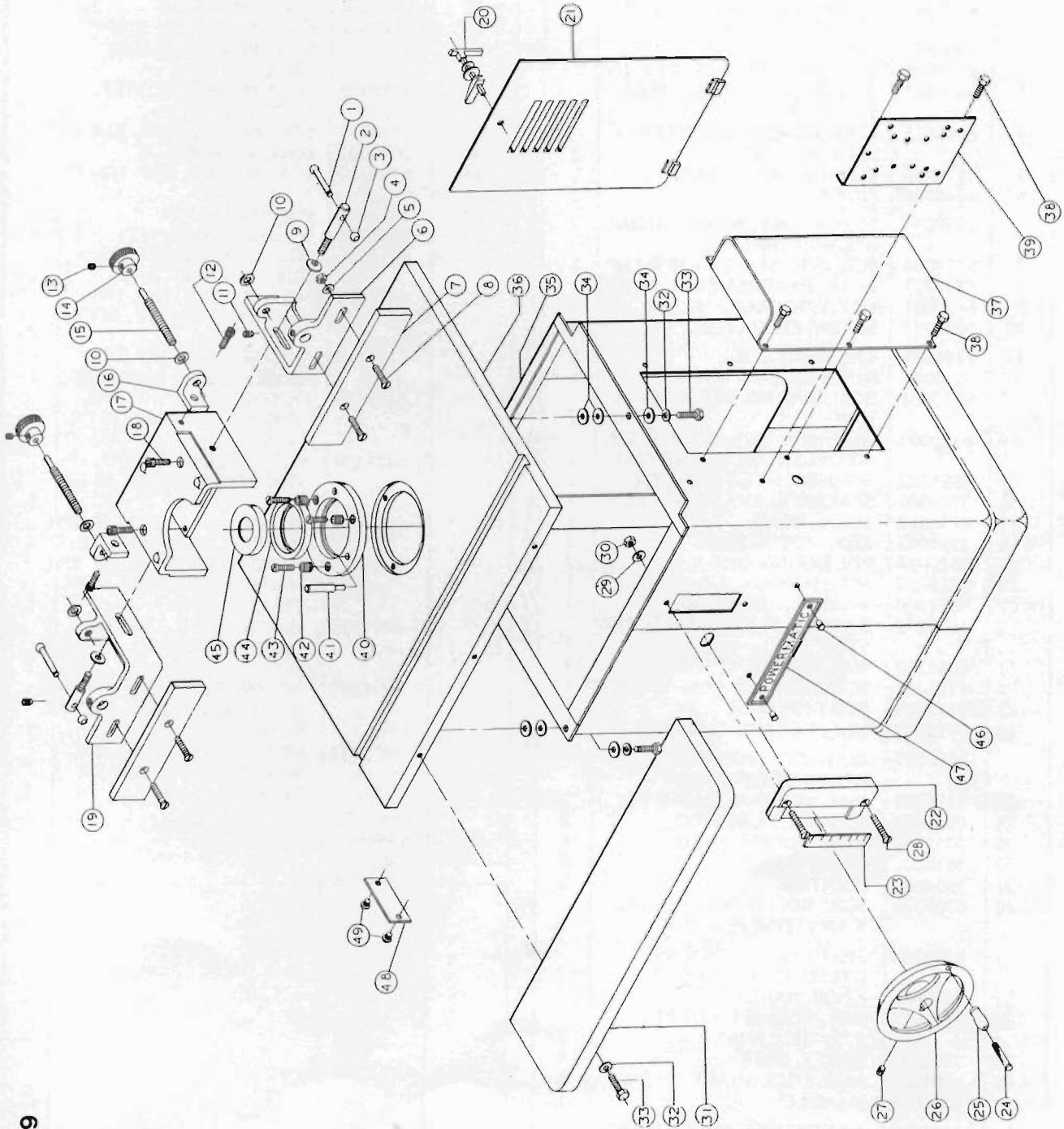


FIGURE 19

PARTS LIST: Body Assembly

ITEM NO.	PART NO.	DESCRIPTION	QTY.	ITEM NO.	PART NO.	DESCRIPTION	QTY.
	2277001	HEAD ASSY., SLIDE (ITEMS 1 THRU 26)		42	6715016	SCR., SOC. SET, CUP PT., 5/16-18 X 5/16"	1
	2586002	PINION ASSY., WORM GEAR (ITEMS 1 THRU 6)		43	6077076	BELT, 7M710	1
1	3096244	COLLAR	1	44	3718041	SHEAVE, MOTOR, STEP 1-1/8" BORE (ALT. FOR) 3781011)	1
2	6715015	SCR., SOC. SET, 5/16-18 X 1/4"	2				
3	6861901	WASHER, FLAT, NYLATRON 3/4" E-12	2	45	3718039	SHEAVE, MOTOR, STEP, 7/8" BORE	1
4	6095025	BUSHING, BRONZE 3/4 I.D. X 7/8 O.D. X 3/4"	2	46	6714127	SCR., HED HD., 1/4-20 X 1/2"	2
5	3070006	BUSHING, ADJ. SHAFT	1	47	3042047	BASE, MOTOR	1
6	3586008	PINION	1	48	6718010	SCR., HEX HD. CAP, 1/2-13 X 1-1/2"	6
	2690003	SCREW ASSY., HEAD RAISING (ITEMS 7 THRU 10)		49	3838008	WASHER, BEVEL	2
7	6714004	SCR., SOC. SET, 1/4-20 X 1/4"	1	50	6861500	WASHER, LOCK, 1/2"	4
8	3237003	GEAR, HEAD RAISING, SPIRAL	1	51	6715006	SCR., HEX WASHER HD., 5/16-18 X 3/4"	4
9	6420001	KEY, WOODRUFF No. 606	1	52	6471100	MOTOR, ELEC, 1HP, 1PH, 3600RPM, 115/230V, 56 FR. TEFC	1
10	3691003	SCREW, ELEVATING	1				
11	3244039	GIB, HEAD SLIDE	1	6471118	MOTOR, ELEC, 1HP, 3PH, 3600RPM, 200V 56FR. TEFC	1	
12	6515007	NUT, HEX JAM, 5/16"	2	6471119	MOTOR, ELEC. 1HP, 3PH, 3600RPM, 230/460V, 56 FR. TEFC	1	
13	6715008	SCR., SOC. HD. SET. 5/16-18 X 1"	2	6471400	MOTOR, ELEC, 1-1/2HP, 1PH, 3600 RPM, 115/230V, 56 FR. TEFC	1	
14	6520009	NUT, HEX THIN HEIGHT, 5/8 -11, FLEXLOC, 31 FKF-1011	1	6471412	MOTOR, ELEC., 1-1/2HP, 3PH, 3600RPM, 200V, 56FR, TEFC	1	
15	6861702	WASHER, NYLATRON, 5/8"	2	6471413	MOTOR, ELEC., 1-1/2HP, 3PH, 3600 RPM, 230/460V, 56 FR. TEFC	1	
16	3735006	SPACER, ELEVATING SCREW	1	6471706	MOTOR, ELEC., 2HP, 3PH, 3600RPM, 230/460V, 145T FR. TEFC	1	
17	3730012	SLIDE, HEAD	1	6471707	MOTOR, ELEC., 2HP, 1PH, 3600RPM, 115/230V, 145T FR. TEFC	1	
18	3387002	KEY, MOTOR BASE	2	6471717	MOTOR, ELEC., 2HP, 3PH, 3600RPM, 200V, 145T FR. TEFC	1	
19	6626028	PIN, SPRING, 3/16 X 1/2"	2				
20	6716032	SCR., HEX HD., 3/8-16 X 1-1/2"	1				
21	6861300	WASHER, LOCK, 3/8"	1				
22	3837002	WASHER, ELEVATING SCREW STOP	1				
23	6861200	WASHER, LOCK, 5/16"	4				
24	6715042	SCR., HEX HD., 5/16-18 X 3/4"	1				
25	3057006	BODY, SHAPER	1				
26	6715032	SCR., HEX HD., 5/16-18 X 1"	3				
	2670002	ROD ASSY., POINTER (ITEMS 27 THRU 32)					
27	6516009	NUT, HEX JAM, 3/8-16	2				
28	6861301	WASHER, FLAT, 3/8"	2				
29	3042004	BASE, POINTER ROD	1				
30	3670009	ROD, POINTER	1				
31	3604001	POINTER	1				
32	6706035	SCR., RD. HD. MACH., 6-32 X 1/4" (ZINC PLATED)	1				
	2708004	SHAFT HEAD LOCK ASSY. (ITEMS 33 THRU 37)					
33	3406016	KNOB, HANDLE	1				
34	6715016	SCR., SOC. SET, CUP PT., 5/16-18 X 5/16"	1				
35	3708001	SHAFT, LOCK	1				
36	3301004	HUB, LOCK SHAFT	1				
37	3268002	HANDLE	1				
	2271004	HANDWHEEL ASSY., (ITEMS 38 THRU 41)					
38	6624006	PIN, GROOVE, 1/4 X 3" LG.	1				
39	3268201	HANDLE	1				
40	3271051	HANDWHEEL, 6" DIA:	1				
41	6715013	SCR., SOC. HD. SET, 5/16-18 X 3/8"	1				

PARTS: Exploded View

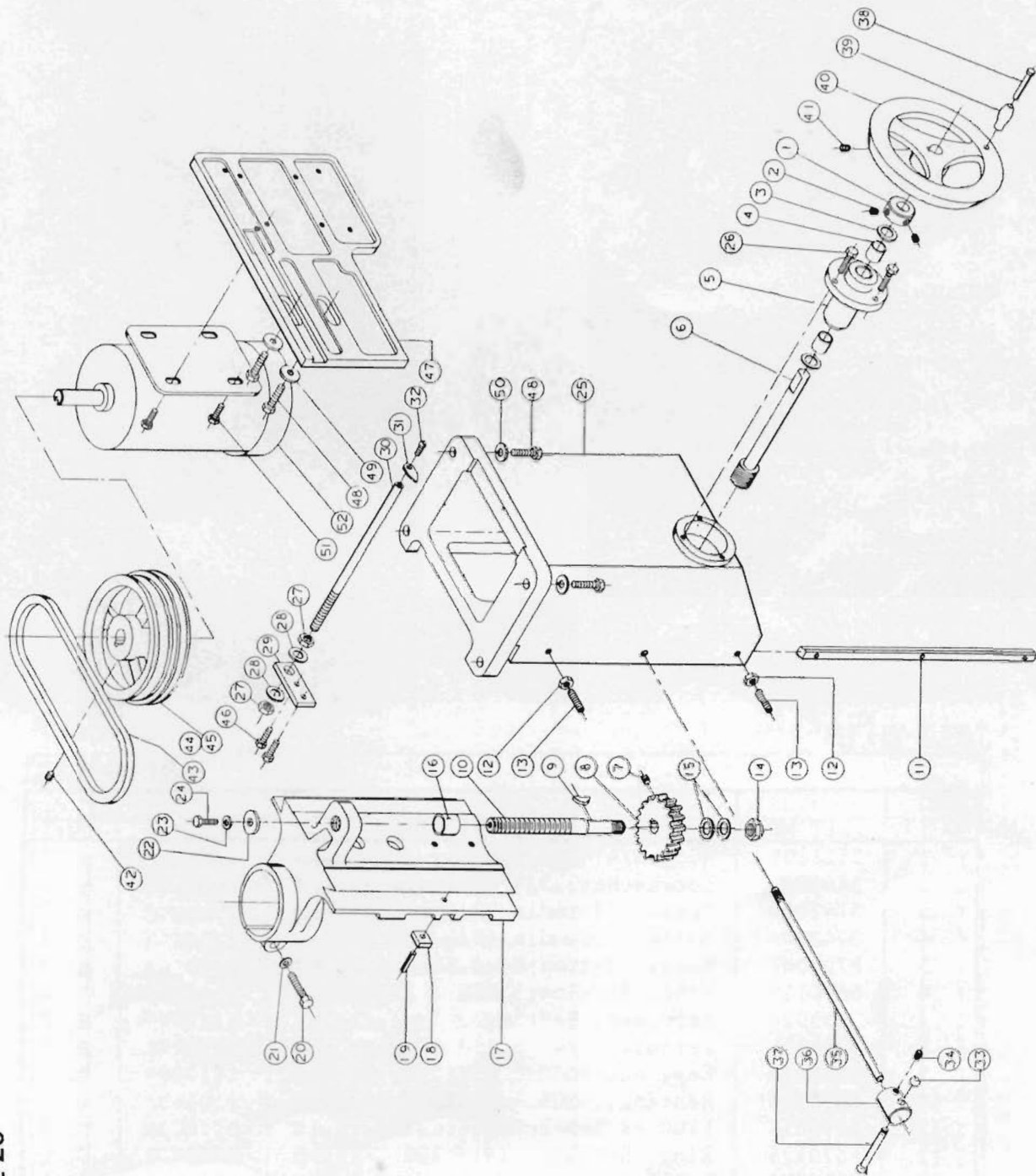
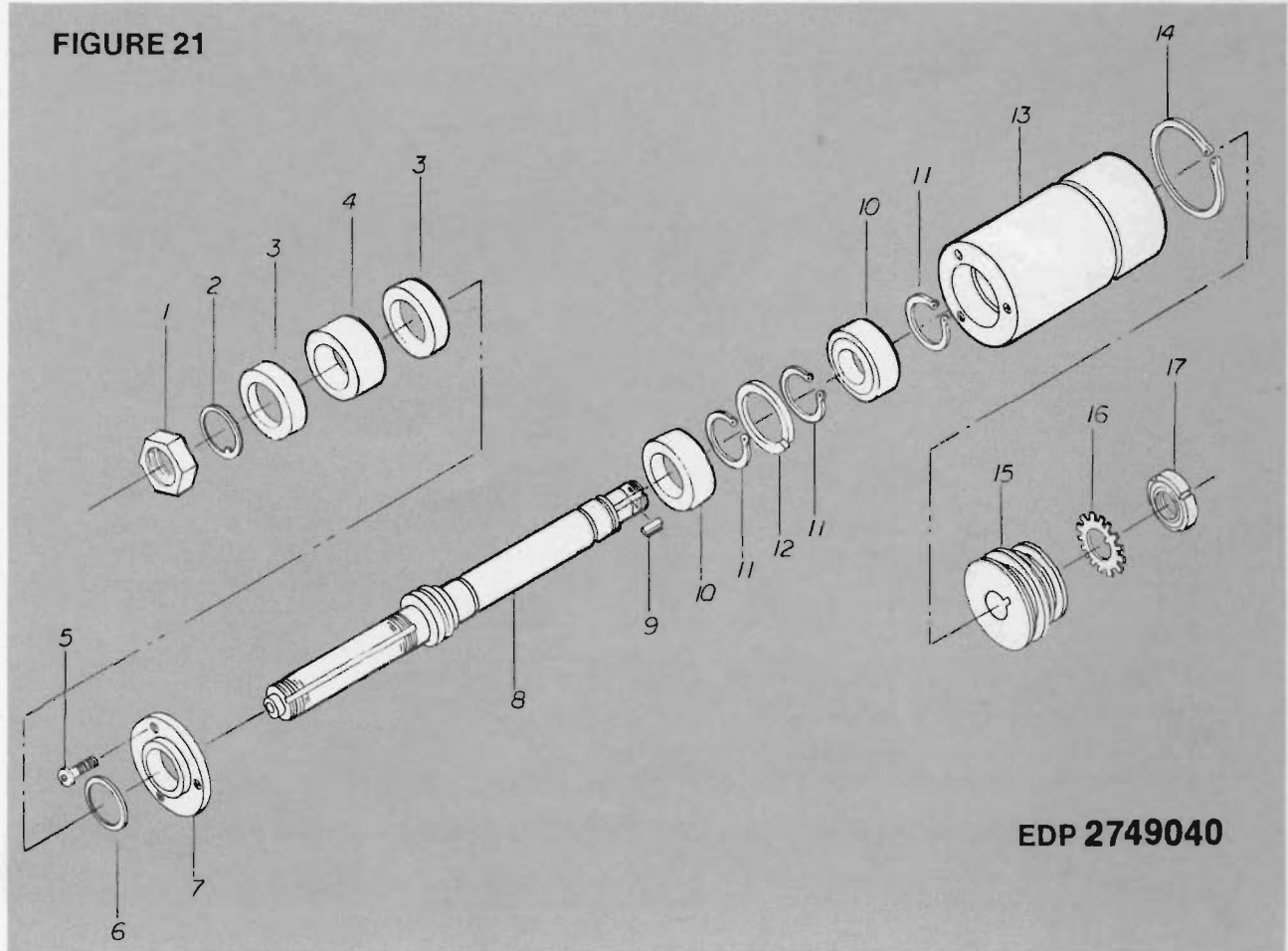


FIGURE 20

3/4 INCH SPINDLE ASSEMBLY

FIGURE 21



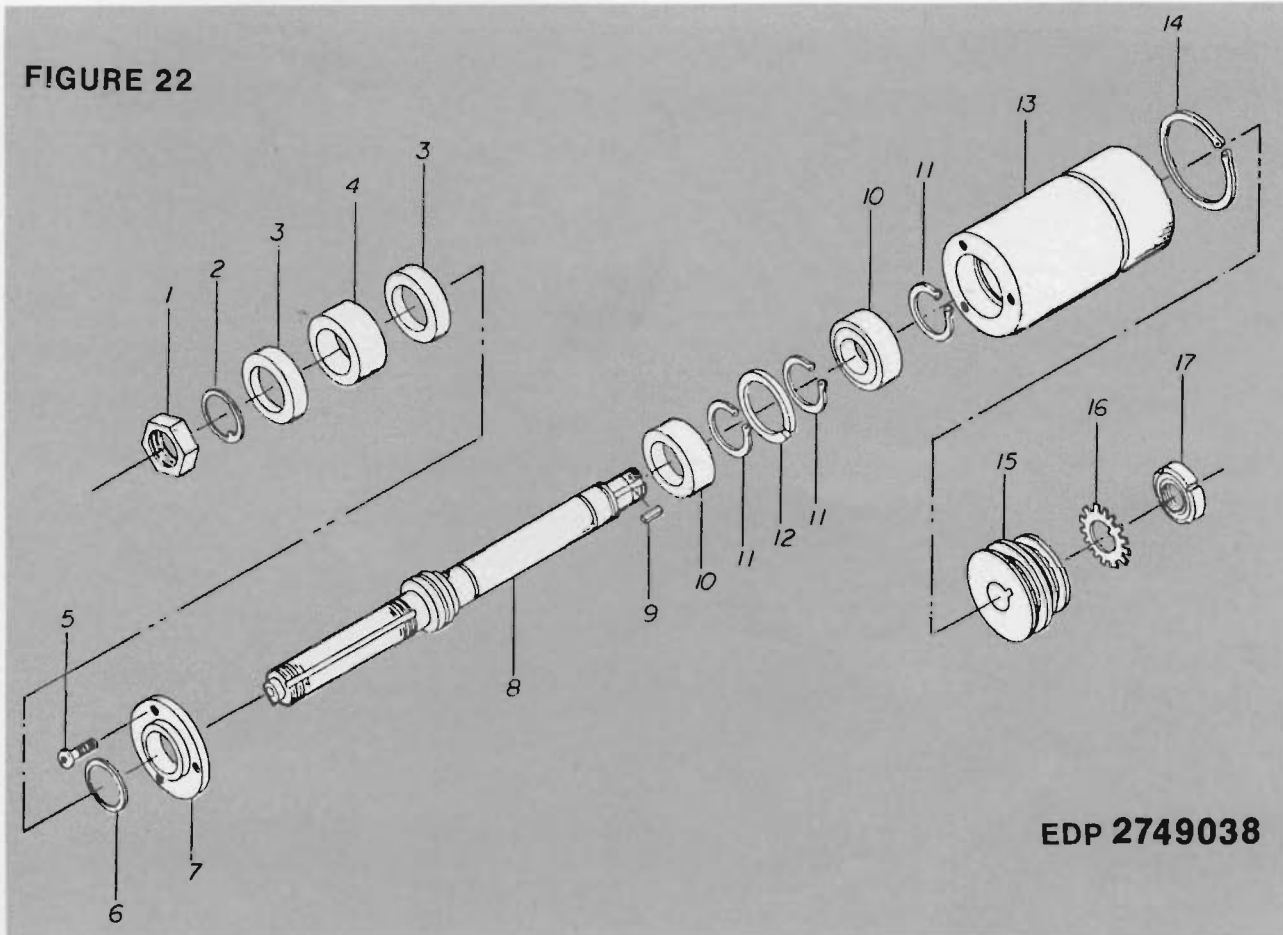
EDP 2749040

Parts List

ITEM NO.	PART NO.	DESCRIPTION	QTY.
1	3526005	Nut, 3/4" Spindle	1
2	3840003	Lockwasher, 3/4" Spindle	1
3	3742004	Spacer, Spindle 3/4 x 1/2	2
4	3742005	Spacer, Spindle 3/4 x 3/4	1
5	6708067	Screw, Button Head Soc. 8-32 x 1/2	3
6	6670129	Ring, Retainer RSN - 137	1
7	3659024	Retainer, Bearing	1
8	3749115	Spindle, 3/4" Solid	1
9	3388062	Key, Square	1
10	6060191	Bearing, 6205 - 2 RSTG	2
11	6670014	5100 98 Truarc External	3
12	6670128	Ring, Retainer IN - 206	1
13	3298253	Quill	1
14	6670130	Ring, Retainer 5100 - 275	1
15	3718038	Sheave, Spindle	1
16	6864004	Washer WD 4, Lock Bearing Steel Plain	1
17	6549004	Nut, Bearing Lock N - 04	1

1 INCH SPINDLE ASSEMBLY

FIGURE 22



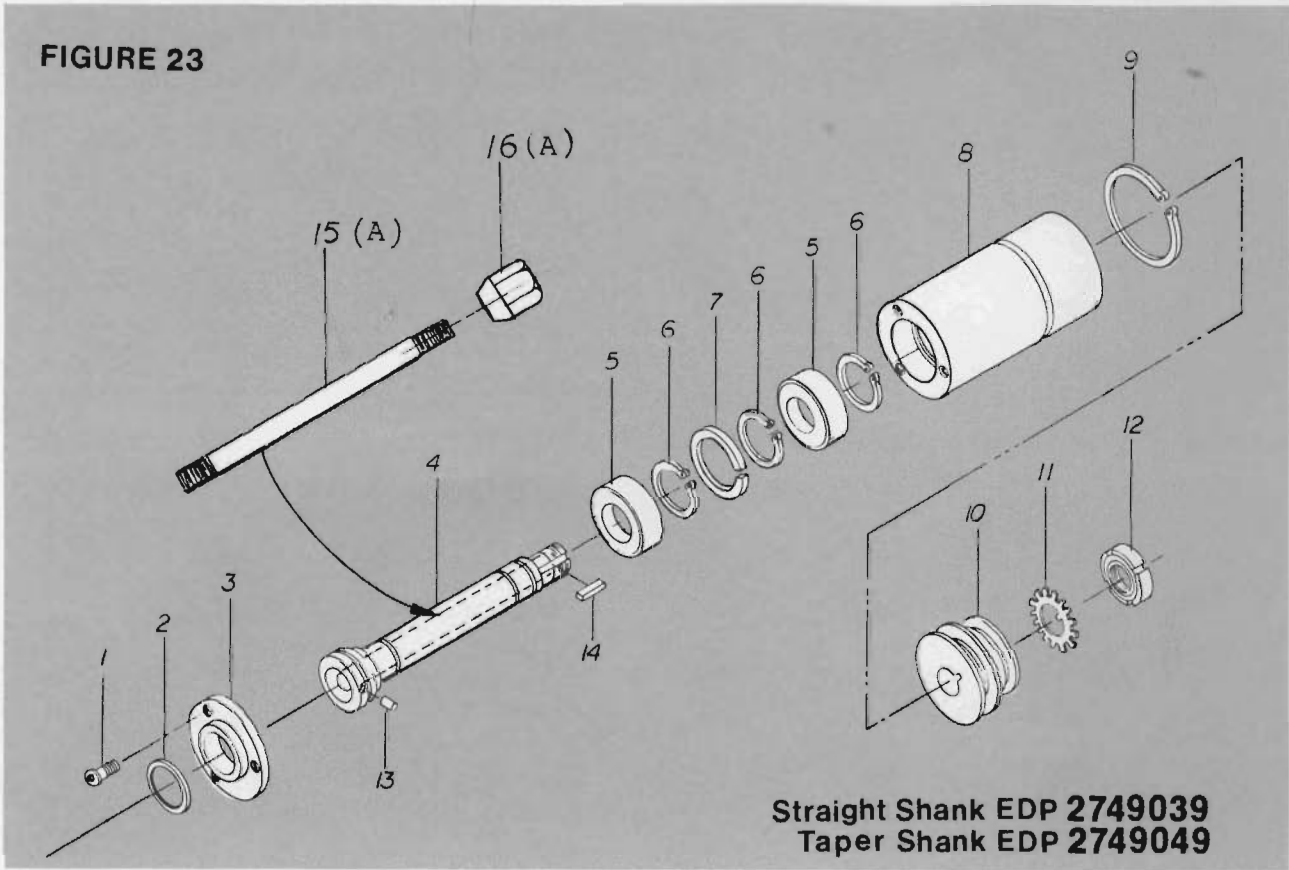
EDP 2749038

Parts List

ITEM NO.	PART NO.	DESCRIPTION	QTY.
1	3526006	Nut, 1" Spindle	1
2	3840004	Lockwasher, 1" Spindle	1
3	3742006	Spacer, Spindle 1 x 1/2	2
4	3742007	Spacer, Spindle 1 x 3/4	1
5	6708067	Screw, Button Head Soc. 8-32 x 1/2	3
6	6670129	Ring, Retainer RSN - 137	1
7	3659024	Retainer, Bearing	1
8	3749111	Spindle, 1" Solid	1
9	3388062	Key, Square	1
10	6060191	Bearing, 6205 - 2RSTG	2
11	6670014	5100 98 Truarc External	3
12	6670128	Ring, Retainer IN - 206	1
13	3298253	Quill	1
14	6670130	Ring, Retainer 5100 - 275	1
15	3718038	Sheave, Spindle	1
16	6864004	Washer, Lock Bearing Steel Plain	1
17	6549004	Nut, Bearing Lock N - 04	1

INTERCHANGEABLE SPINDLE ASSEMBLY

FIGURE 23



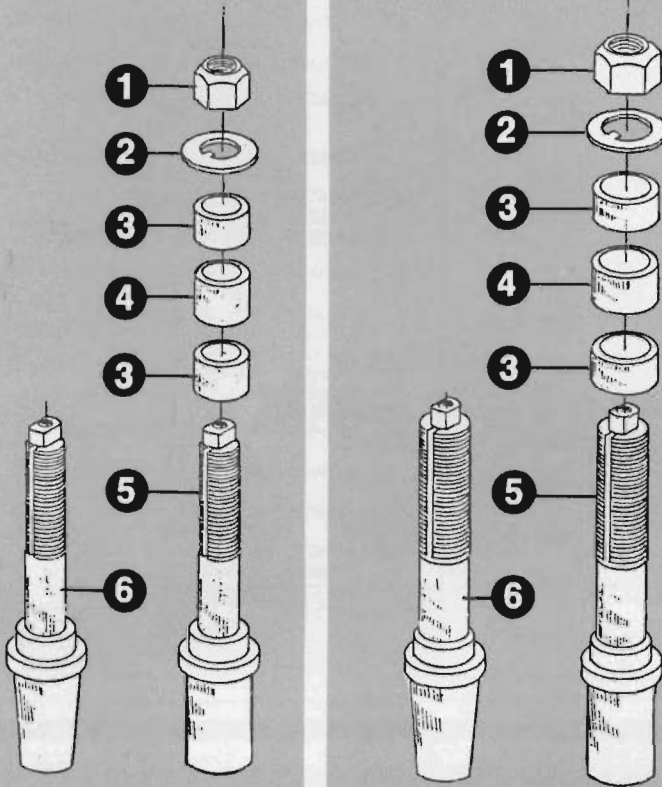
Straight Shank EDP 2749039
Taper Shank EDP 2749049

Parts List

ITEM NO.	PART NO.	DESCRIPTION	QTY.
1	SCREW	Bottom Head Sco. 8-32 X 1/2	3
2	6670129	Ring, Retainer RSN - 137	1
3	3659024	Retainer, Bearing	1
4	3749112	Spindle, Interchangeable straight shank	1
4A	3749123	Spindle, Interchangeable taper shank	1
5	6060191	Bearing 6205 - 2RSTG	2
6	6670014	5100 98 Truarc External	3
7	6670128	Ring, Retainer 5100 - 275	1
8	3298253	Quill	1
9	6670130	Ring, Retainer IN - 206	1
10	3718038	Sheave, Spindle	1
11	6864004	Washer, WD 4, Bearing Lock Steel Plain	1
12	6549004	Nut, Bearing Lock N - 04	1
13	3583208	Pin, Dowel	1
14	3388062	Key, Square	1
15	3140001	Drawbar, Spindle, for straight shank	1
15A	3140009	Drawbar, Spindle, for taper shank	1
16	3526202	Nut, Drawbar, for straight shank	1
16A	3526232	Nut, Drawbar, for taper shank	1

SPINDLE ASSEMBLIES: Shank Arbors, Wrenches

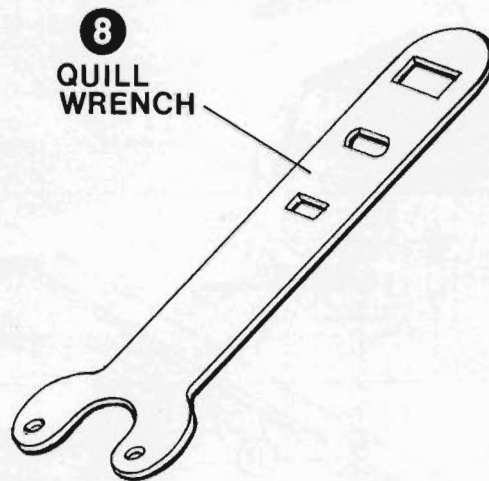
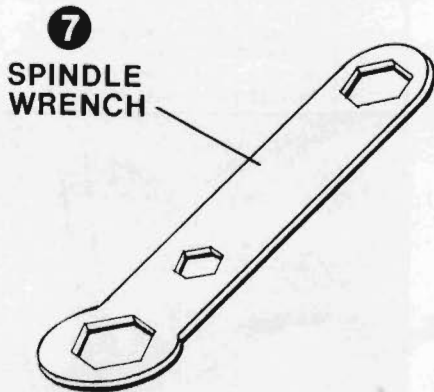
FIGURE 24



Parts List

ITEM NO.	PART NO.	DESCRIPTION	QTY.
	2749004	1/2" SPINDLE ASSY., (ITEMS 1 THRU 5 STANDARD)	
1	3526004	NUT, SPINDLE, 1/2"	1
2	3840002	WASHER, SPINDLE LOCK, 1/2"	1
3	3742002	SPACER, SPINDLE, 1/2 X 1/2"	2
4	3742003	SPACER, SPINDLE, 1/2 X 3/4"	1
5	3749016	SPINDLE, 1/2"	1
	2749047	1/2" TAPER SPINDLE ASSY., (ITEMS 1 THRU 4 (as above) AND ITEM 6 STANDARD)	
6	3749124	1/2" TAPER SPINDLE	1
	2749003	3/4" SPINDLE ASSY., (ITEMS 1 THRU 5 STANDARD)	
1	3526005	NUT, SPINDLE, 3/4"	1
2	3840003	WASHER, SPINDLE LOCK, 3/4"	1
3	3742004	SPACER, SPINDLE	2
4	3742005	SPACER, SPINDLE	1
5	3749017	SPINDLE, 3/4"	1
	2749048	3/4" TAPER SPINDLE ASSY., (ITEMS 1 THRU 4 (as above) AND ITEM 6 STANDARD)	
6	3749125	3/4", TAPER SPINDLE	1
7	3868004	WRENCH, SPINDLE	1
8	3868005	WRENCH, QUILL	1

FIGURE 25



GUARD, SAFETY RING:

Parts List

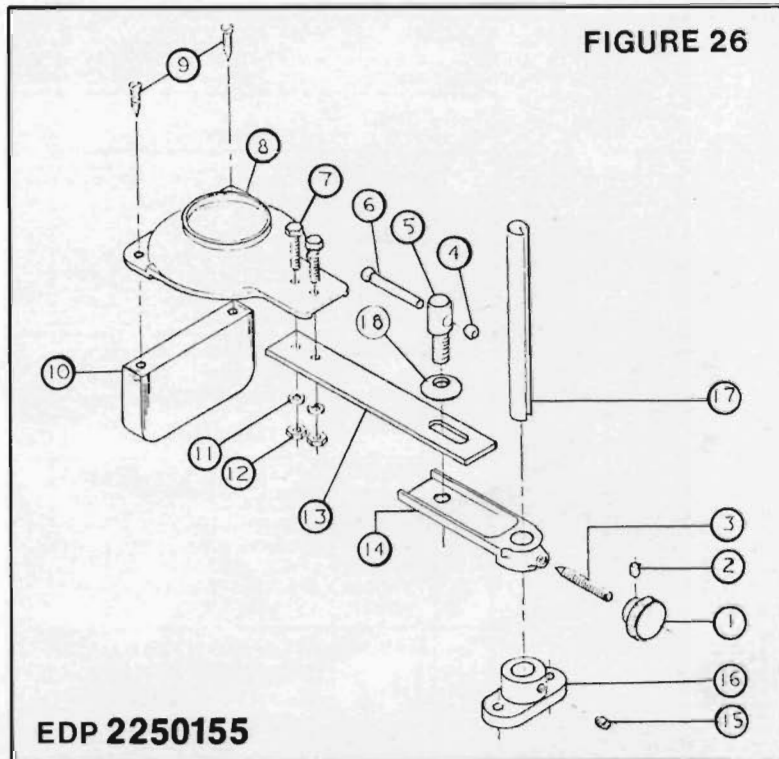


FIGURE 26

ITEM NO.	PART NO.	DESCRIPTION	QTY.
	2406001	KNOB ASSY., (ITEMS 1 THRU 3)	
1	3406005	KNOB, SCREW ADJ., CHROME PLATED	1
2	6714004	SCR., SOC. SET, CUP PT., 1/4 - 20 X 1/4"	1
3	6716117	SCR., SET, 60° STUD PT., 3/8-16 X 1-1/2"	1
	2695027	SCREW, LOCK ASSEMBLY (ITEMS 4 THRU 6)	
4	3406016	KNOB, HANDLE	1
5	3695039	SCREW, LOCK	1
6	3268002	HANDLE, LOCK SCREW	1
7	6715035	SCR., HEX HD. CAP, 5/16-18 X 3/4"	2
8	3250043	GUARD, SHAPER	1
9	6748005	SCR., RD. HD. WOOD, 10 X 1" L	2
10	3782006	SUPPORT, GUARD	1
11	6861200	WASHER, LOCK, 5/16"	2
12	6515007	NUT, HEX JAM, 5/16-18	2
13	3044015	BAR, ADJUST	1
14	3064037	BRACKET, SHAPER, GUARD ADJUSTING	1
15	6716009	SCR., SOC. SET, CUP PT., 3/8-16 X 1/2"	1
16	3064036	BRACKET, SHAPER, GUARD, MOUNTING	1
17	3670012	ROD, HEIGHT ADJUSTING	1
18	3338008	WASHER, LOCKSCREW	1

EDP 2250155

MITER GAUGE: Optional

Parts List

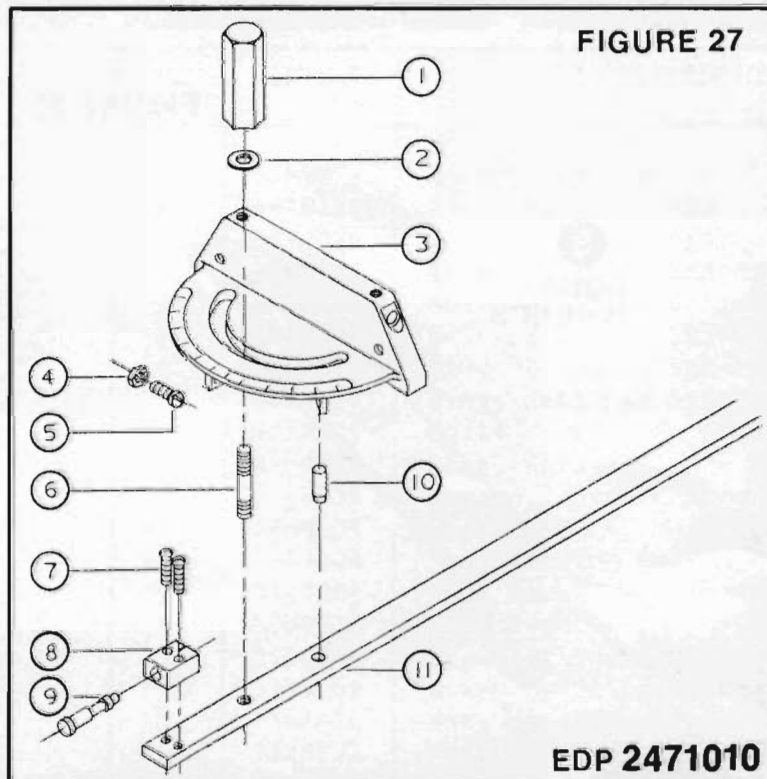


FIGURE 27

ITEM NO.	PART NO.	DESCRIPTION	QTY.
1	3268050	KNOB, MITER	1
2	6861101	WASHER, FLAT, 1/4"	1
3	3230007	GAUGE, MITER	1
4	6506003	NUT, HEX, 6-32 (PLATED)	3
5	6706094	SCR., RD. HD. MACH., 6-32 X 1/2"	3
6	3695220	SCREW, LOCK	1
7	6706041	SCR., RD. HD. MACH., 6-32 X 3/4"	2
8	3055101	BLOCK, POINTER	1
9	3582097	PIN, STOP	1
10	6623012	PIN, DOWEL, 1/4 X 1"	1
11	3044312	BAR, MITER, GAUGE	1

EDP 2471010

817
379-4081

POWERMATIC[®]
McMinnville, Tennessee 37110