

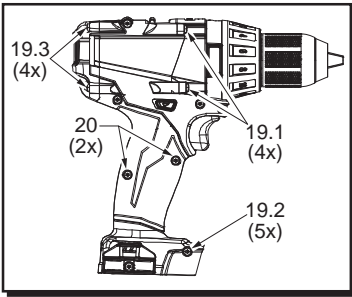


SERVICE PARTS LIST

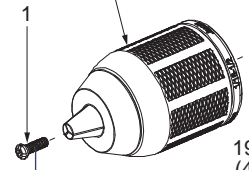
BULLETIN NO.
55-06-2663

| | | | |
|--|---------------------|--------------------------------|-------------------|
| SPECIFY CATALOG NO. AND SERIAL NO. WHEN ORDERING PARTS | | REVISED BULLETIN 55-06-2662 | DATE June 2015 |
| M18 FUEL™ COMPACT 1/2" DRIVER-DRILL | | | |
| CATALOG NO. 2603-059 | STARTING SERIAL NO. | F18D | |
| WIRING INSTRUCTION | | | |

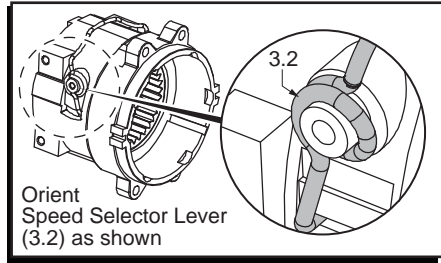
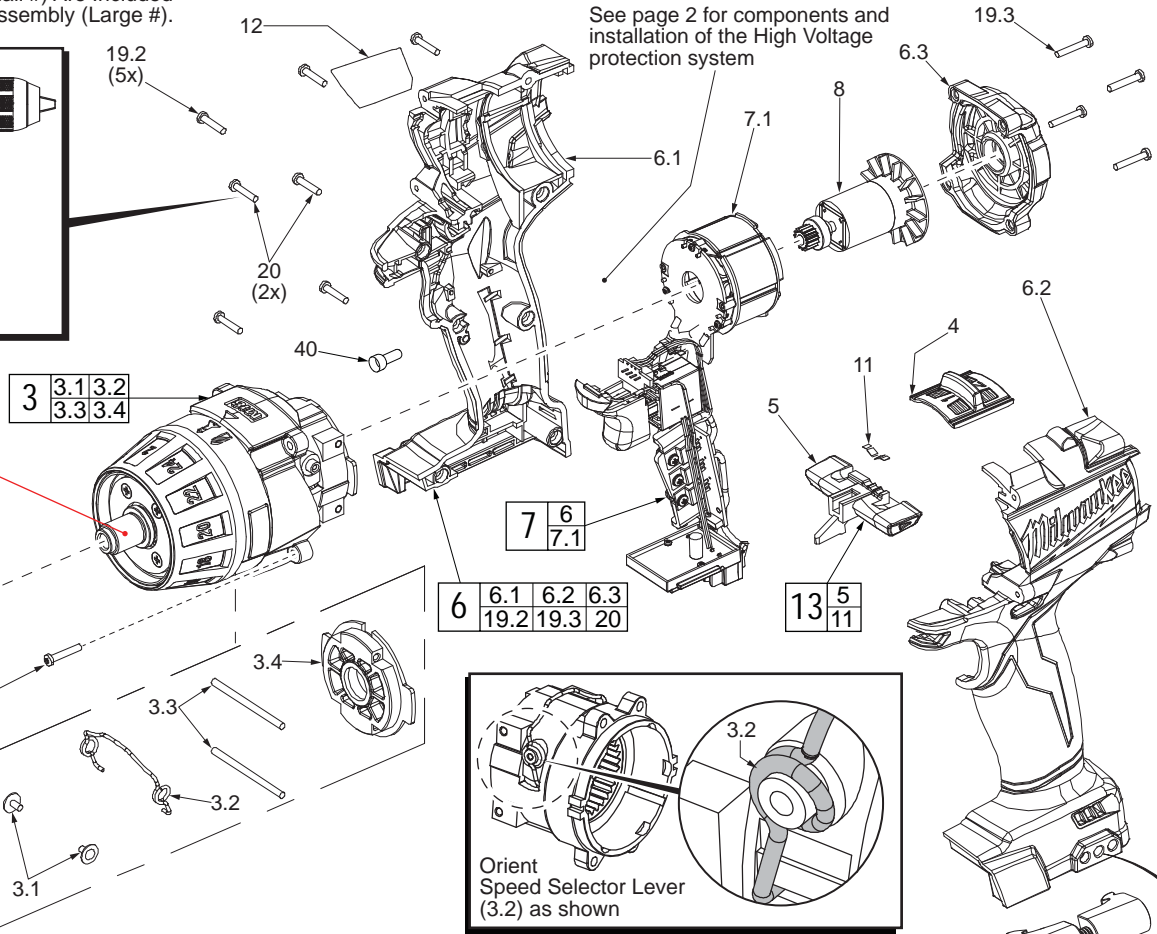
EXAMPLE:
Component Parts (Small #) Are Included
When Ordering The Assembly (Large #).



Apply Red Loctite® thread locking sealant or the equivalent to the threads of the gearcase spindle (3) before securing chuck to that spindle. Torque to 550-600in/lbs (45-50ft/lbs).

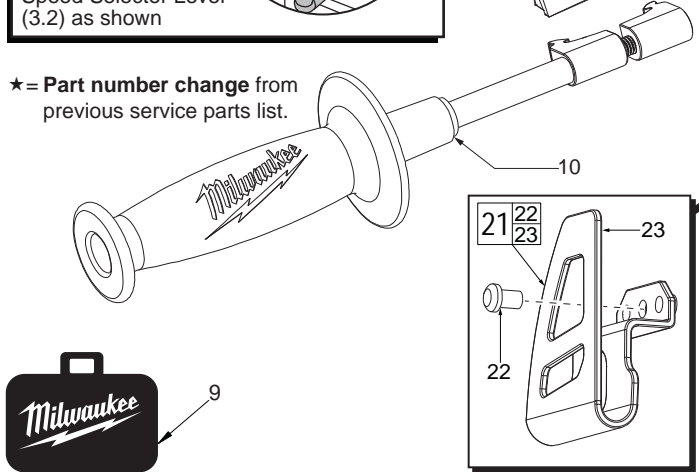


Apply Blue Loctite® thread locking sealant or the equivalent to the threads of the chuck screw (1) before securing chuck to the gearcase spindle. Torque to 90-100in/lbs (7-8ft/lbs).



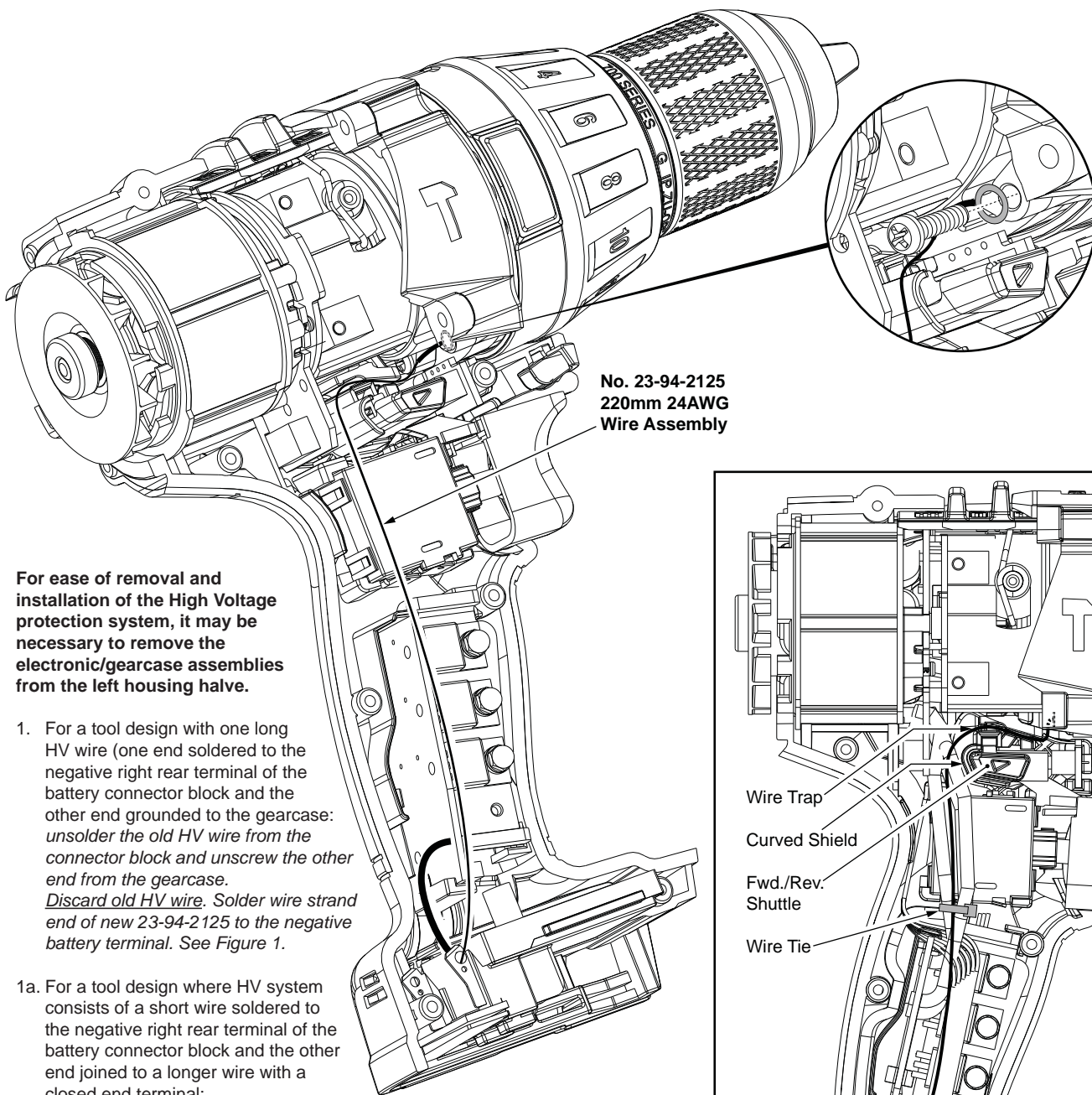
| FIG. | PART NO. | DESCRIPTION OF PART | NO. REQ. |
|------|------------|--|----------|
| 1 | 05-88-1500 | M6 x 1.0 LH Chuck Screw w/ locking patch | (1) |
| 2 | 42-66-0200 | 1/2" Keyless Chuck | (1) |
| 3 | 14-29-2603 | Gearcase Assembly | (1) |
| 3.1 | 05-81-0542 | M2.3 x 4.5mm ST Screw | (2) |
| 3.2 | 44-10-2603 | Speed Selector Lever | (1) |
| 3.3 | ----- | 2.3 x 34 Pin | (2) |
| 3.4 | ----- | Motor Mounting Plate | (1) |
| 4 | 45-24-2603 | Speed Selector Button | (1) |
| ★ 5 | 42-42-2803 | Forward / Reverse Shuttle | (1) |
| ★ 6 | 31-44-2803 | Housing Kit | (1) |
| 6.1 | ----- | Right Housing Halve | (1) |
| 6.2 | ----- | Left Housing Halve | (1) |
| 6.3 | ----- | Rear Cap | (1) |
| ★ 7 | 14-20-2804 | Housing / Electronics Kit | (1) |
| 7.1 | ----- | Motor / Switch / PCBA Assembly | (1) |
| 8 | 16-07-2603 | Service Armature | (1) |
| 9 | 42-55-2604 | Blow Molded Carrying Case | (1) |
| 10 | 42-62-0526 | Auxiliary Side Handle Assembly | (1) |
| 11 | 40-50-1135 | Shuttle Spring | (1) |
| 12 | ----- | Service Nameplate | (1) |
| ★ 13 | 42-42-2804 | Forward / Reverse Shuttle Kit | (1) |
| 19.1 | 06-82-6350 | M3 x 16mm T-10 ST Screw (Gearcase) | (4) |
| 19.2 | 06-82-6350 | M3 x 16mm T-10 ST Screw (Handle Halves) | (5) |
| 19.3 | 06-82-6350 | M3 x 16mm T-10 ST Screw (Rear Cap) | (4) |
| 20 | 06-82-1080 | M3 x 14mm T-10 ST Screw (Handle Halves) | (2) |
| 21 | 42-70-2653 | Belt Clip Assembly | (1) |
| 22 | 06-82-0130 | 6-32 x 5/16" Pan Hd. T-15 Machine Screw | (1) |
| 23 | ----- | Belt Clip | (1) |
| 30 | 23-94-2125 | 220mm Wire Assy. with Terminal (High Voltage Protection, See Page 2) | (1) |
| 40 | 22-56-0150 | Closed End Connector | (1) |

★ = Part number change from previous service parts list.



| SCREW TORQUE SPECIFICATION CHART | | | | |
|----------------------------------|------------|----------------------------------|----------------------------------|-------|
| FIG. | PART NO. | DESCRIPTION | SEATING TORQUE (IN-LBS) (FT-LBS) | |
| 1 | 05-88-1500 | Chuck Screw | 90-100 | 7-8 |
| 2 | 42-66-0200 | Chuck | 550-600 | 45-50 |
| 3.1 | 05-81-0542 | Speed Selector Lever Screw | 3.5±1 | |
| 19.1 | 06-82-6350 | Gearcase Assembly Scr | 7.0±2.5 | |
| 19.2 | 06-82-6350 | Right Housing Halve Scr (Qty. 5) | 7.0±2.5 | |
| 19.3 | 06-82-6350 | Rear Cap Screw | 4.0±1 | |
| 20 | 06-82-1080 | Right Housing Halve Scr (Qty. 2) | 7.5±2.5 | |

MILWAUKEE ELECTRIC TOOL CORPORATION
13135 W. Lisbon Road, Brookfield, WI 53005
Drwg. 1



No. 23-94-2125
220mm 24AWG
Wire Assembly

For ease of removal and installation of the High Voltage protection system, it may be necessary to remove the electronic/gearcase assemblies from the left housing half.

1. For a tool design with one long HV wire (one end soldered to the negative right rear terminal of the battery connector block and the other end grounded to the gearcase: *unsolder the old HV wire from the connector block and unscrew the other end from the gearcase. Discard old HV wire. Solder wire strand end of new 23-94-2125 to the negative battery terminal. See Figure 1.*
- 1a. For a tool design where HV system consists of a short wire soldered to the negative right rear terminal of the battery connector block and the other end joined to a longer wire with a closed end terminal: *use a side cutter or similar tool to snip the end off of the closed end connector. Unscrew the long wire from gearcase. Discard old HV long wire and connector. Twist the wire strand end of the new 23-94-2125 to the wire strands of the short wire on the battery connector block. Secure both wires with a new closed end connector (22-56-0150). See Figure 2.*
2. Place Electronic/Gearcase Assemblies loosely into the housing support (left housing half).
3. Route the wire through wire traps above the fwd./rev. shuttle and around the curved shield behind the shuttle.
4. Route the wire over the three wires on the right side of switch and thread wire through existing wire tie (See detail to the right). **Note:** If wire tie is too tight to slip high voltage wire through, carefully snip that wire tie off and replace with a new small wire tie (23-78-0100) to secure all four wires right below the switch.
5. Place the ring terminal of the new HV wire assembly over the hole in gearcase. Orient the terminal so wire feeds to the left across the bottom of the gearcase and secure with the gearcase screw.

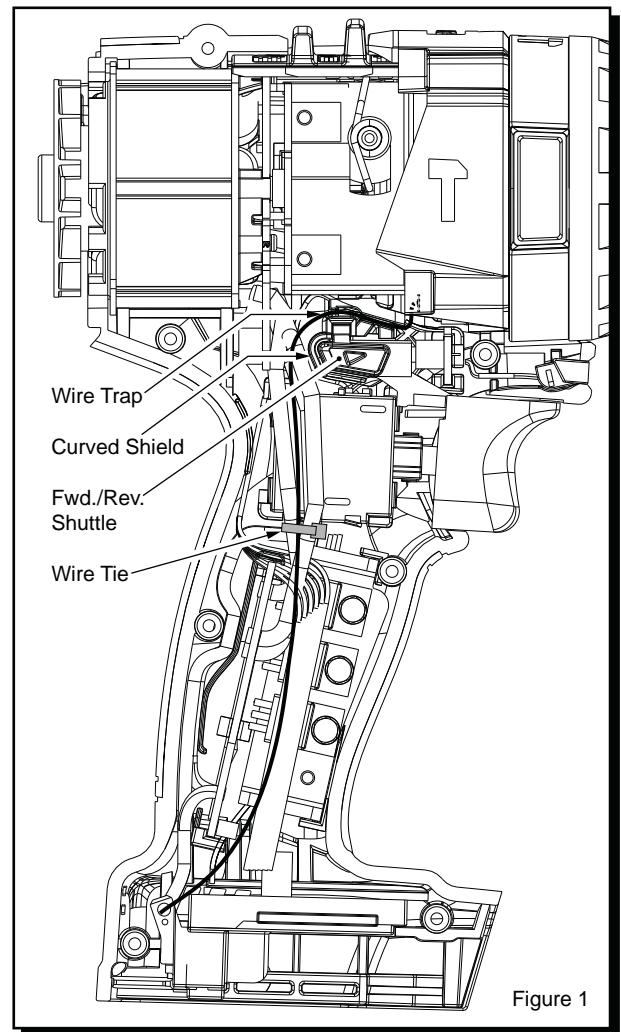


Figure 1

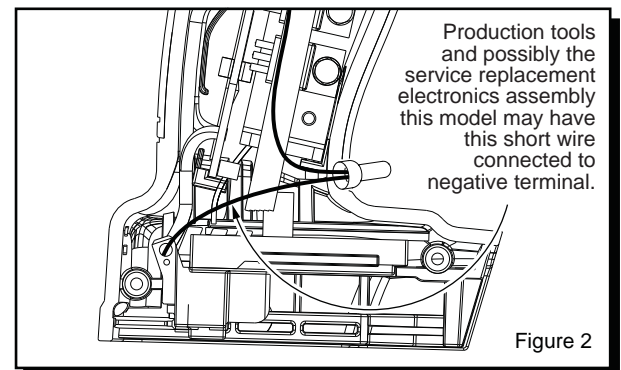


Figure 2

Production tools and possibly the service replacement electronics assembly this model may have this short wire connected to negative terminal.