



SERVICE PARTS LIST

BULLETIN NO.
54-06-2620

SPECIFY CATALOG NO. AND SERIAL NO. WHEN ORDERING PARTS		REVISED BULLETIN	DATE
M18™ MAGNUM 1/2" DRIVER-DRILL			Aug. 2014
CATALOG NO. 2610-20	STARTING SERIAL NO. B53A	WIRING INSTRUCTION SEE PAGE 3	

EXAMPLE:
00 0 Component Parts (Small #) Are Included
When Ordering The Assembly (Large #).

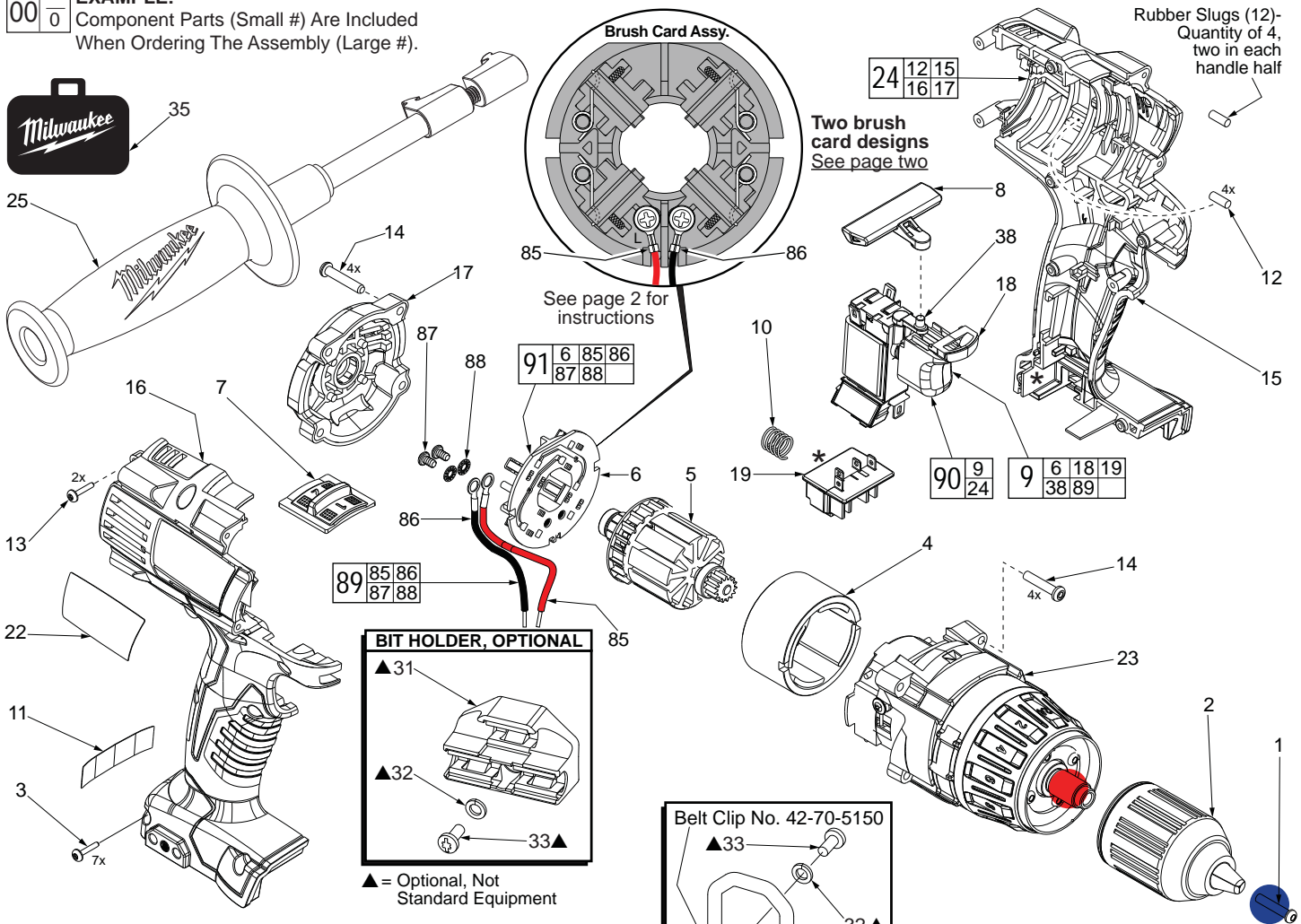
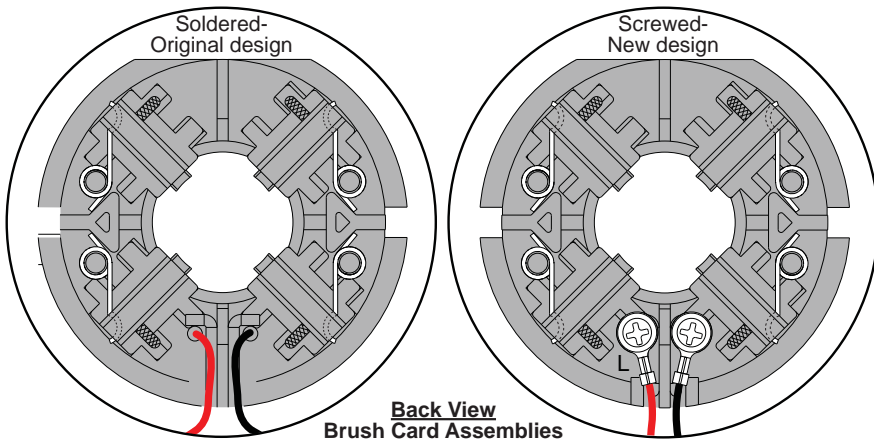


FIG.	PART NO.	DESCRIPTION OF PART	NO. REQ.
1	05-88-1500	M6 x 1.0 LH Chuck Screw w/ locking patch	(1)
2	42-66-0755	1/2" Chuck	(1)
3	06-82-2025	M3.5 Handle Screw T-10	(2)
4	18-01-3026	Service Field	(1)
5	16-01-3025	Service Armature Assembly	(1)
6	-----	Brush Card	(1)
7	45-24-0675	High / Low Shifter	(1)
8	42-42-0800	Forward / Reverse Button	(1)
9	23-66-0273	Switch Assembly	(1)
10	40-50-1090	Compression Spring	(1)
11	10-20-2695	Warning Label	(1)
12	45-30-0255	Rubber Slug	(4)
13	06-82-6350	M3 x 16mm Handle Screw T-10	(2)
14	05-88-1710	M3.5 x 22mm End Cap/Gearcase Scr T-10	(8)
15	-----	Left Handle	(1)
16	-----	Right Handle	(1)
17	42-52-0390	End Cap	(1)
18	-----	LED Assembly	(1)
19	-----	Terminal Block Assembly	(1)
22	12-20-2610	Service Nameplate Kit	(1)
23	14-29-0305	Service Gearcase Assembly	(1)
24	31-44-2611	Service Housing Kit	(1)
25	42-62-0526	Side Handle Assembly	(1)
31	43-72-0550	Bit Holder, <i>Optional</i>	(1)
32	05-90-0225	M4 Spring Washer, <i>Optional</i>	(1)
33	06-82-5275	6-32 x 5/16" Pan Hd. T-15 Screw, <i>Optional</i>	(2)
34	42-70-5150	Belt Hook, <i>Optional</i>	(1)
35	42-55-2611	Carrying Case	(1)
38	-----	Switch	(1)
80	42-70-2653	Belt Clip Assembly	(1)
81	-----	Belt Clip	(1)
82	-----	Belt Clip Screw	(1)
85	-----	Red Leadwire Assembly	(1)
86	-----	Black Leadwire Assembly	(1)

There are 2 belt clip designs for this tool. The initial design, Belt Clip #34, 42-70-5150 is being discontinued and replaced by Belt Clip Assembly #80, 42-70-2653.

FIG.	PART NO.	DESCRIPTION OF PART	NO. REQ.
87	05-88-0928	M3 x 5mm Pan Hd. T-10 Screw	(2)
88	45-88-1980	Spring Washer	(2)
89	14-46-2395	Leadwire/Screw/Washer Kit	(1)
90	23-66-2611	Switch/Handle Service Kit	(1)
91	14-46-2018	Brush Card Assembly	(1)

- = Apply Red Loctite® thread locking sealant or the equivalent to the threads of the gearcase spindle (23) before securing chuck to that spindle. Torque to 550-600in/lbs (45-50ft/lbs).
- = Apply Blue Loctite® thread locking sealant or the equivalent to the threads of the chuck screw (1) before securing chuck to the gearcase spindle. Torque to 90-100in/lbs

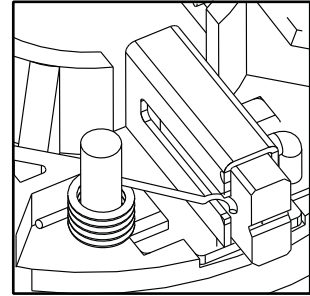
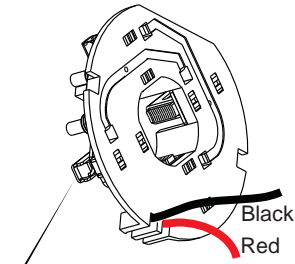


NOTE:
There are two Brush Card Assembly designs.

On the original brush card design the red and black wires that go to the switch are soldered on the brush card.

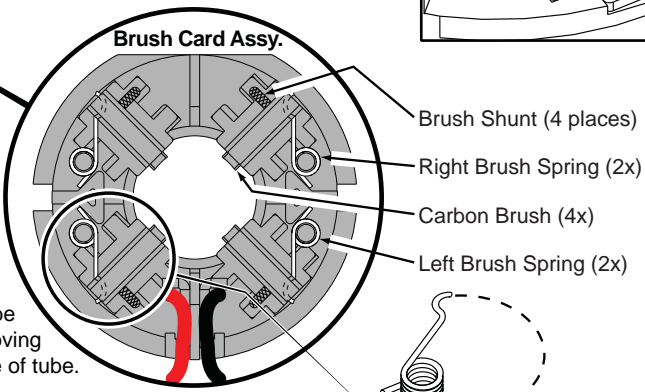
On the new brush card design the red and black wires that go to the switch are secured to the brush card with spring washers and screws.

The new brush card design is **directly interchangeable** in tools that have the old brush card design.



NOTE:
As an aid to prevent damage to the armature commutator or the brushes when removing and installing the armature assembly, it is recommended to pull the carbon brushes partially back into the brush tube. The carbon brushes will be held in place with the brush spring moving from the rear of the brush to the side of the brush.

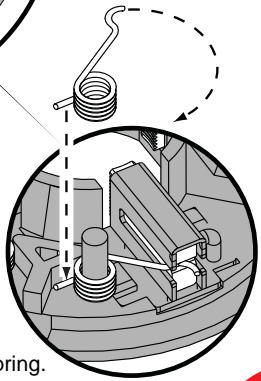
In the unlikely event that the spring pops off follow the instructions below.



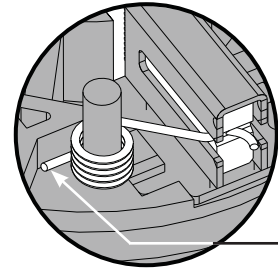
Be sure carbon brush is in brush tube with brush shunt moving freely in side groove of tube.

Place brush spring over post with short leg positioned downward as shown. Be sure spring is completely down with short leg trapped against 'Y' shaped wall on brush card.

While holding spring in place, bring the long leg of spring over the brush tube and through rear opening of tube. Position rounded hook of spring in groove on back of carbon brush. Be sure to check for free movement between carbon brush, brush shunt and brush spring.

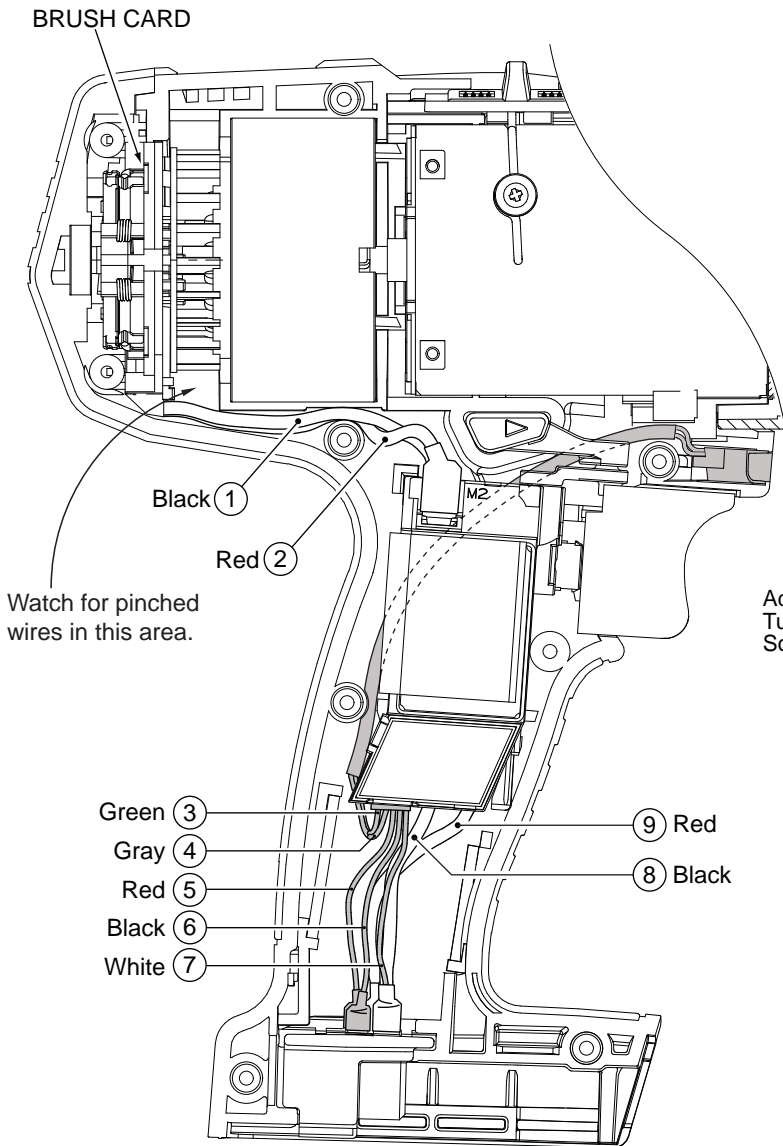


Wrong

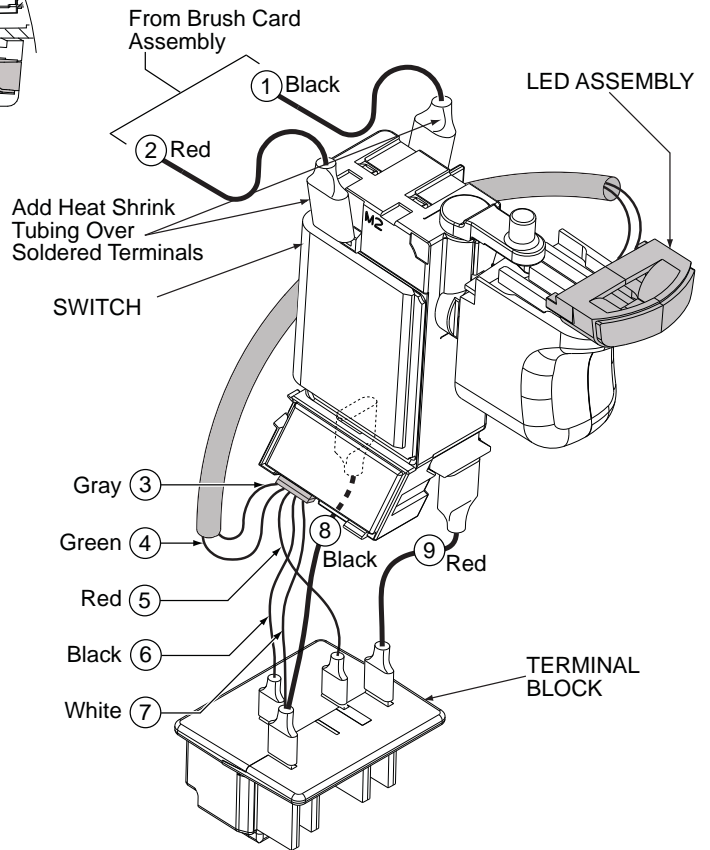
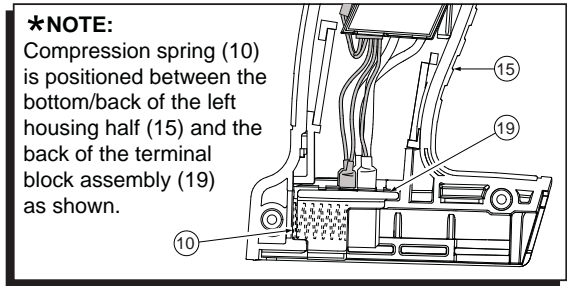


Correct

Short leg of spring to the bottom



Watch for pinched wires in this area.



WIRING SPECIFICATIONS

Wire No.	Wire Color	Origin or Gauge	Length	Terminals, Connectors and 1 or 2 End Wire Preparation
1	Black	-----	-----	Component of the Brush Card Assembly.
2	Red	-----	-----	Component of the Brush Card Assembly.
3	Green	-----	-----	Component of the LED Assy./Switch Assembly.
4	Gray	-----	-----	Component of the LED Assy./Switch Assembly.
5	Red	-----	-----	Component of the LED Assy./Switch Assembly.
6	Black	-----	-----	Component of the LED Assy./Switch Assembly.
7	White	-----	-----	Component of the LED Assy./Switch Assembly.
8	Black	-----	-----	Component of the Switch Assembly.
9	Red	-----	-----	Component of the Switch Assembly.