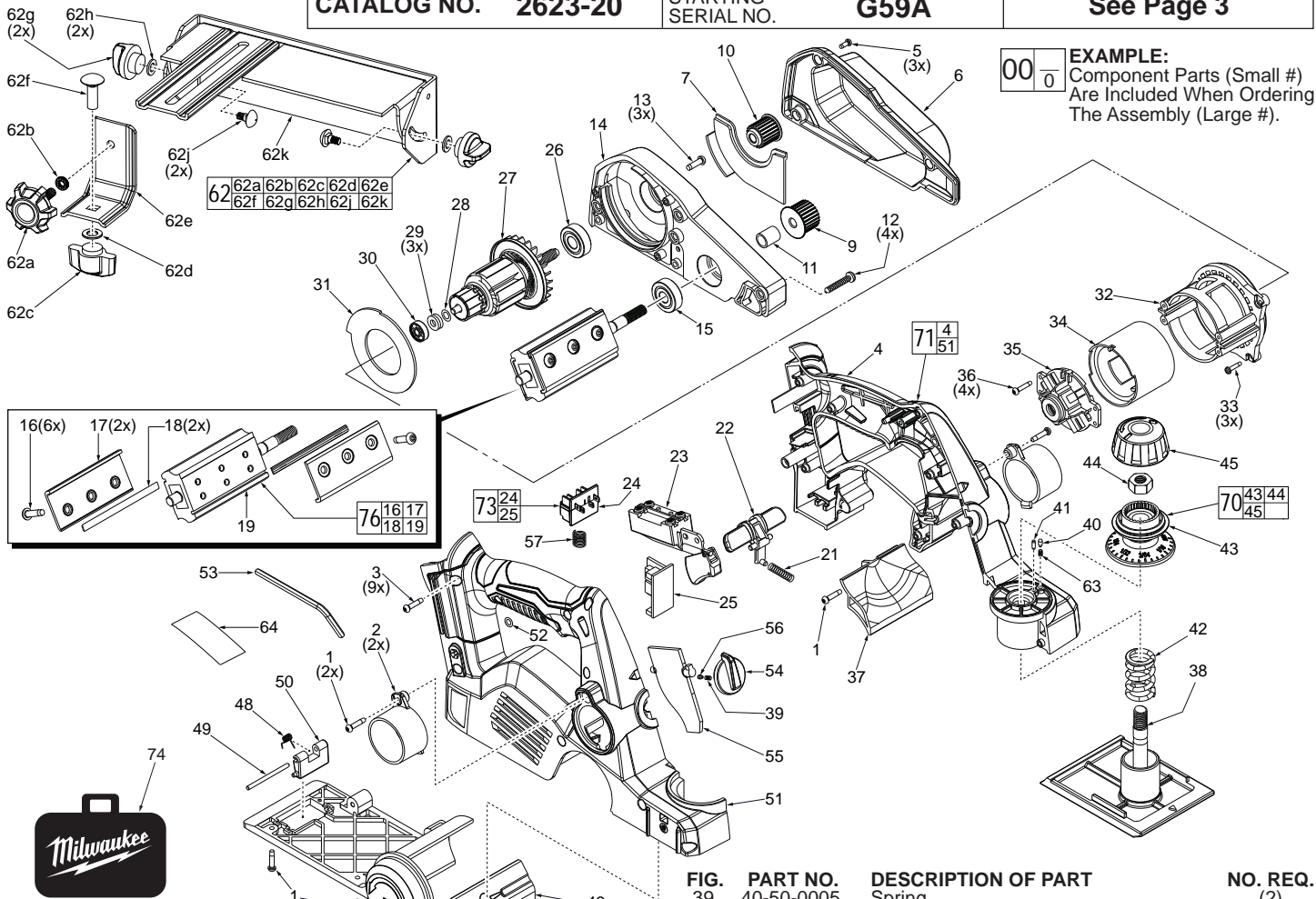




# SERVICE PARTS LIST

**BULLETIN NO.**  
**54-49-2610**

SPECIFY CATALOG NO. AND SERIAL NO. WHEN ORDERING PARTS		REVISED BULLETIN	DATE
<b>CORDLESS M18™ PLANER</b>			June 2015
CATALOG NO. <b>2623-20</b>	STARTING SERIAL NO. <b>G59A</b>	WIRING INSTRUCTION <b>See Page 3</b>	



**EXAMPLE:**  
Component Parts (Small #)  
Are Included When Ordering  
The Assembly (Large #).

FIG.	PART NO.	DESCRIPTION OF PART	NO. REQ.
1	06-82-2025	M3.5 x 15 Pan Hd. Plastite T-15 Screw	(6)
2	42-04-0020	Dust Adapter	(2)
3	06-82-7470	6-19 x 11/16" Pan Hd. Plast. T-15 Screw	(9)
4	-----	Left Handle Halve - Support	(1)
5	05-81-0010	M3 x .5 Pan Hd. Tapitite T-10 Screw	(3)
6	42-92-0011	Pulley Cover	(1)
7	42-92-0017	Scroll Cover	(1)
8	42-25-0031	Belt (Not Shown)	(1)
9	28-95-0022	Pulley - Driven	(1)
10	28-95-0024	Pulley - Driver	(1)
11	42-40-0018	Bushing	(1)
12	06-82-7326	8-16 x 1" Pan Hd. Plastite T-20 Screw	(4)
13	05-78-5316	M4 x 14mm Pan Hd. Tapitite T-20 Screw	(3)
14	44-66-0027	Side Plate	(1)
15	02-04-0535	Ball Bearing	(1)
16	06-75-0023	10-24 x .75 Button Hd. Mach. Screw-1/8 Hex	(6)
17	42-68-0011	Blade Clamp	(2)
18	42-26-0022	Cutting Blade	(2)
19	28-52-0010	Cutting Head	(1)
21	40-50-1760	Spring	(1)
22	42-42-0044	Switch Lock-Out	(1)
23	23-66-1000	On-Off Switch	(1)
24	-----	Battery Connector Block Assembly	(1)
25	-----	PCBA	(1)
26	02-04-1020	Ball Bearing	(1)
27	16-01-2623	Service Armature	(1)
28	45-36-2040	Armature Spacer	(1)
29	45-88-3225	Washer	(3)
30	02-04-1930	Ball Bearing	(1)
31	42-14-0017	Fan Baffle	(1)
32	44-34-0031	Motor Mount	(1)
33	05-81-1170	M3 x 12mm Pan Hd. Tapitite T-10 Screw	(3)
34	18-10-0300	Service Field	(1)
35	14-46-0029	Brush Card Assembly	(1)
36	06-82-6350	M3 x 16mm Pan Hd. ST T-10 Screw	(4)
37	42-14-0019	Top Air Flow	(1)
38	14-74-0101	Front Shoe Assembly	(1)

FIG.	PART NO.	DESCRIPTION OF PART	NO. REQ.
39	40-50-0005	Spring	(2)
40	44-60-0011	Clutch Click Pin	(1)
41	44-60-0013	Pin	(1)
42	40-50-0007	Compression Spring	(1)
43	42-76-0235	Adjustment Collar	(1)
44	06-55-0615	Hex Nut	(1)
45	31-12-0010	Adjustment Cap	(1)
46	42-14-0021	Bottom Air Flow	(1)
48	40-50-0009	Spring	(1)
49	44-60-0019	Pin	(1)
50	31-70-0102	Kickstand	(1)
51	-----	Right Handle Halve - Cover	(1)
52	34-40-0024	O-Ring	(1)
53	49-96-0051	1/8" Hex Key	(1)
54	43-98-0016	Dust Flap Knob	(1)
55	42-21-0010	Dust Flap	(1)
56	44-60-0021	Flap Knob Pin	(1)
57	40-50-1090	Spring	(1)
62	49-13-0030	Bevel Edge Guide Assembly	(1)
62a	44-60-0023	Attachment Knob	(1)
62b	44-90-0007	Ring	(1)
62c	44-60-0027	Width Adjustment Knob	(1)
62d	45-88-0011	Washer	(1)
62e	44-66-0041	Adjustment Plate	(1)
62f	06-14-0061	M6 x 12mm Bolt	(2)
62g	44-60-0034	Bevel Adjustment Knob	(1)
62h	45-88-0018	Washer	(2)
62j	06-14-0071	Bevel Adjustment Bolt	(2)
62k	-----	Edge Guide Plate Assembly	(1)
63	40-50-0802	Detent Spring	(1)
64	12-20-0009	Service Nameplate	(1)
65	42-16-2623	Dust Bag (Not Shown)	(1)
70	43-98-0076	Adjustment Knob Assembly	(1)
71	31-44-0029	Housing Assembly	(1)
72	14-74-0107	Rear Shoe Assembly with Needle Bearing	(1)
73	14-20-0033	Electronics Assembly	(1)
74	42-55-2623	Carrying Case	(1)
76	28-52-2623	Cutting Head Assembly	(1)

**MILWAUKEE ELECTRIC TOOL CORPORATION**  
13135 W. LISBON RD., BROOKFIELD, WI 53005  
Dwg. 1

## Removing and Installing the Drive Belt

Driver Pulley (10)  
Teeth set on a slightly smaller  
OD than the Driven Pulley

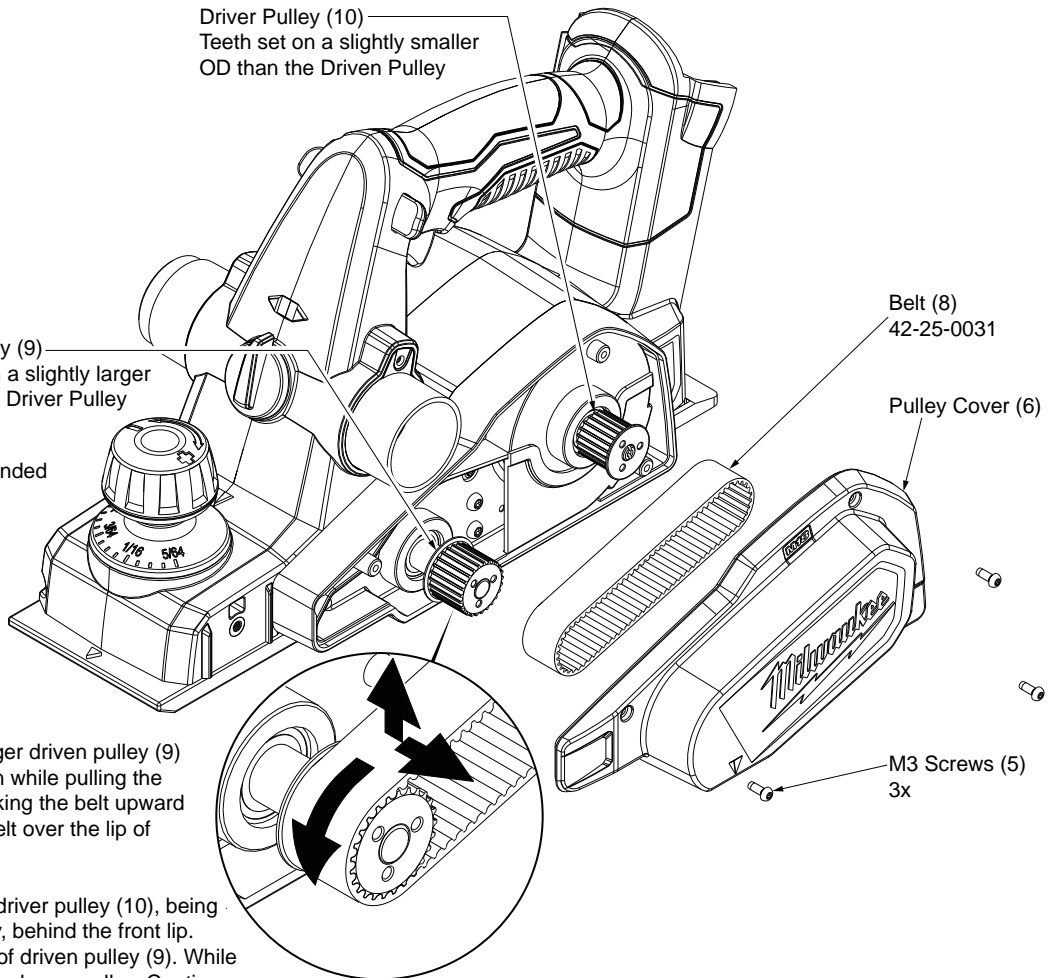
Driven Pulley (9)  
Teeth set on a slightly larger  
OD than the Driver Pulley

Belt (8)  
42-25-0031

Pulley Cover (6)

When replacing belt (8), use the recommended replacement belt only. Order **42-25-0031**.

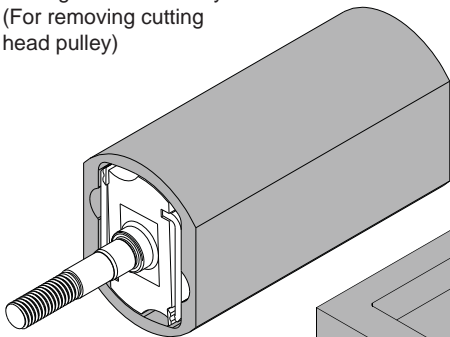
- Always **REMOVE** the **BATTERY** before performing any service or maintenance.
- Remove the three M3 pulley cover screws (5) with a T-10 screwdriver.
- Remove the pulley cover (6).
- With both hands, work the belt off of larger driven pulley (9) by turning the belt in the direction shown while pulling the belt upward and outward. Continue working the belt upward until it is off the larger pulley. Remove belt over the lip of the smaller driver pulley (10).
- Install new belt by placing belt onto the driver pulley (10), being sure that belt is completely on the pulley, behind the front lip. Place the other end of the belt onto top of driven pulley (9). While turning the belt, push and work it onto the larger pulley. Continue working the belt downward onto the pulley until it is in place.
- Replace the pulley cover (6) and secure with the three screws (5). **NOTE:** Do not over-tighten screws.



## SERVICE FIXTURES:

### 61-10-0092

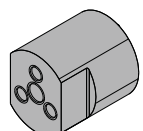
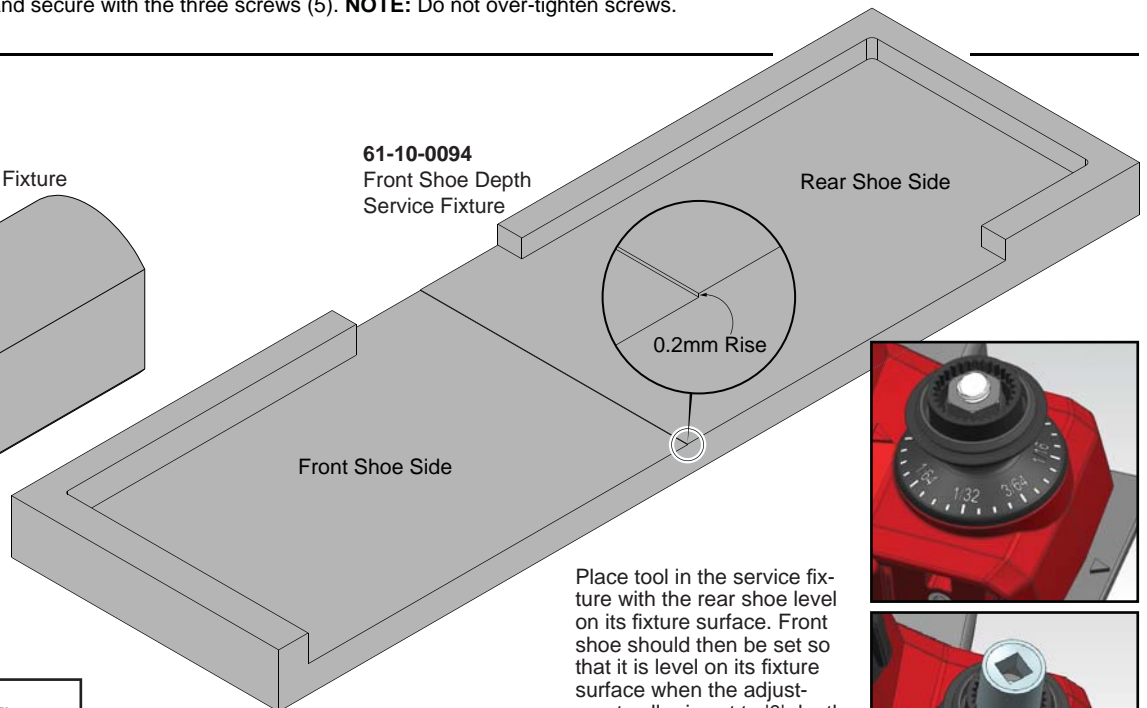
Cutting Head Assembly Service Fixture  
(For removing cutting head pulley)



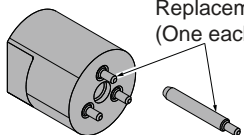
### 61-10-0094

Front Shoe Depth  
Service Fixture

Rear Shoe Side



61-10-0096  
Pulley Service Fixture



61-10-0098  
Replacement Pin  
(One each)

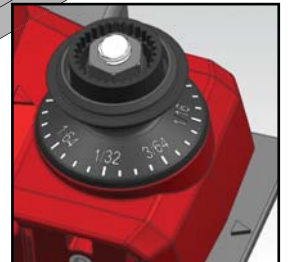
Motor side pulley installation torque:  
40 kgf-cm (34.7 in-lbs)  
Left hand thread

Cutting head side pulley installation  
torque: 60 kgf-cm (52.1 in-lbs)  
Right hand thread

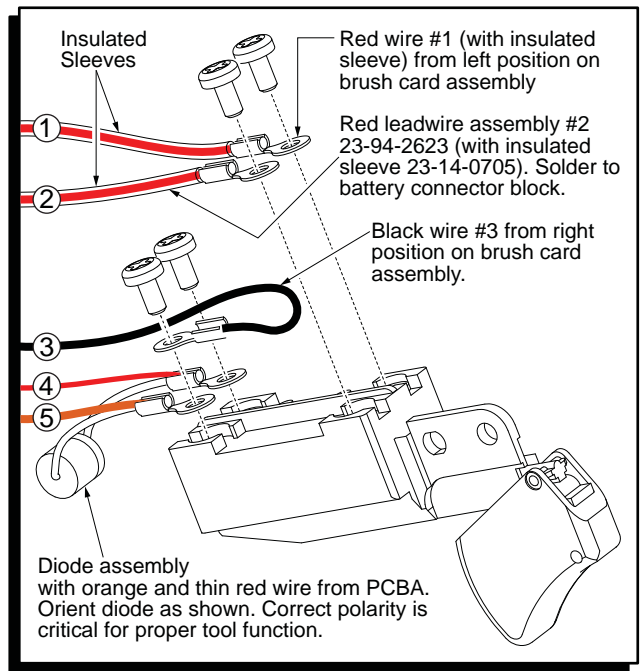
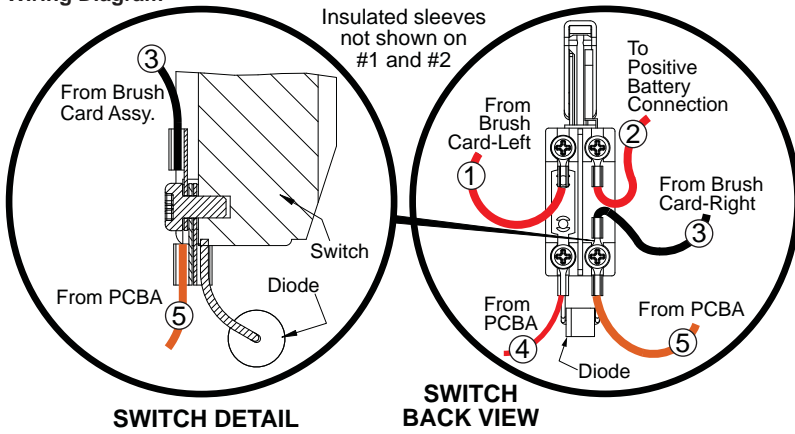
Place tool in the service fixture with the rear shoe level on its fixture surface. Front shoe should then be set so that it is level on its fixture surface when the adjustment collar is set to '0' depth (0.2mm below the rear shoe surface).

Front shoe depth can be set with a standard 16mm socket and wrench.

**NOTE:** A 0.2mm shim under the rear shoe can be used in place of the service fixture.

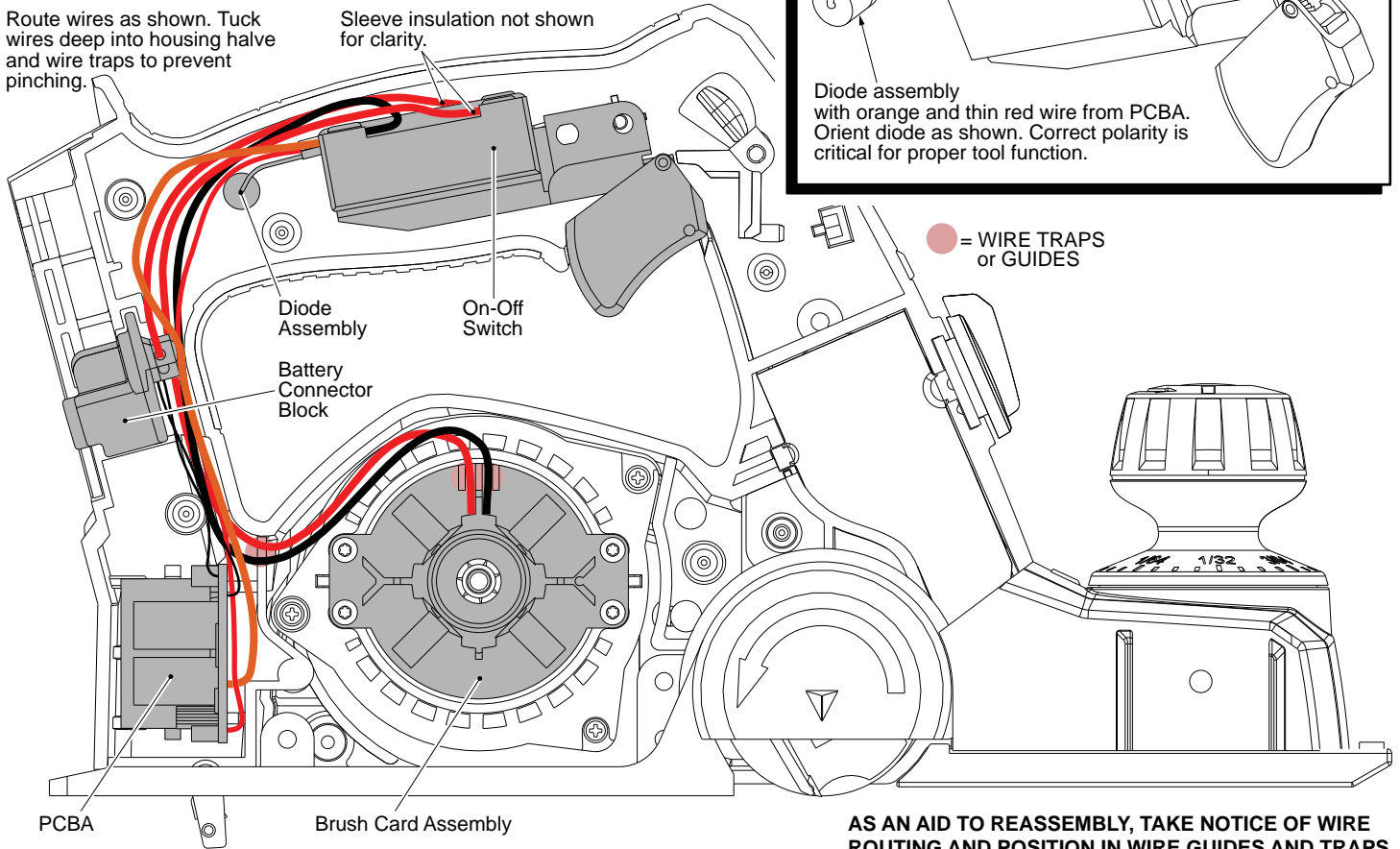


**Wiring Diagram**



Route wires as shown. Tuck wires deep into housing half and wire traps to prevent pinching.

Sleeve insulation not shown for clarity.



**AS AN AID TO REASSEMBLY, TAKE NOTICE OF WIRE ROUTING AND POSITION IN WIRE GUIDES AND TRAPS WHILE DISMANTLING TOOL.**

**BE CAREFUL AND AVOID PINCHING WIRES BETWEEN HANDLE HALVES WHEN ASSEMBLING.**

**SCREW TORQUE SPECIFICATIONS**

FIG.	PART NO.	WHERE USED	SEAT TORQUE	
			(KG/CM)	(IN/LBS)
1	06-82-2025	Rear Shoe Assembly	6-10	5.0-8.5
1	06-82-2025	Bottom Air Flow	6-10	5.0-8.5
1	06-82-2025	Top Air Flow	6-10	5.0-8.5
1	06-82-2025	Dust Adapter (Both Sides)	6-10	5.0-8.5
3	06-82-7470	Right Handle Half - Cover	11-17	9.5-14.5
5	05-81-0010	Pulley Cover	4-8	3.5-7.0
12	06-82-7326	Side Plate to Rear Shoe	17-28	14.5-24
13	05-78-5316	Side Plate to Left Handle Half	11-16	9.5-14
16	06-75-0023	Blade Clamp	30-40	26-35
23	-----	On-Off Switch	8-12	7-10.5
33	05-81-1170	Motor Mount	8-12	7-10.5
36	06-82-6350	Brush Card Assembly	4-8	3.5-7.0