



SERVICE PARTS LIST

BULLETIN NO.
54-38-0010

SPECIFY CATALOG NO. AND SERIAL NO. WHEN ORDERING PARTS		REVISED BULLETIN	DATE
M18™ 1/4 SHEET SANDER			Dec. 2021
CATALOG NO.	2649-20	STARTING SERIAL NO.	M61A
			WIRING INSTRUCTION See page 2

EXAMPLE:
Component Parts (Small #)
Are Included When Ordering
The Assembly (Large #).

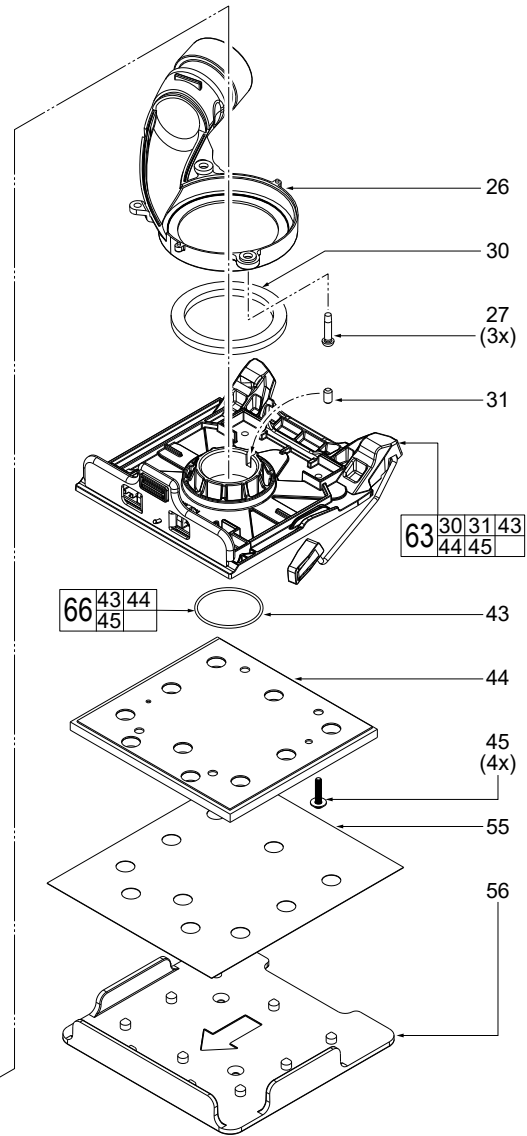
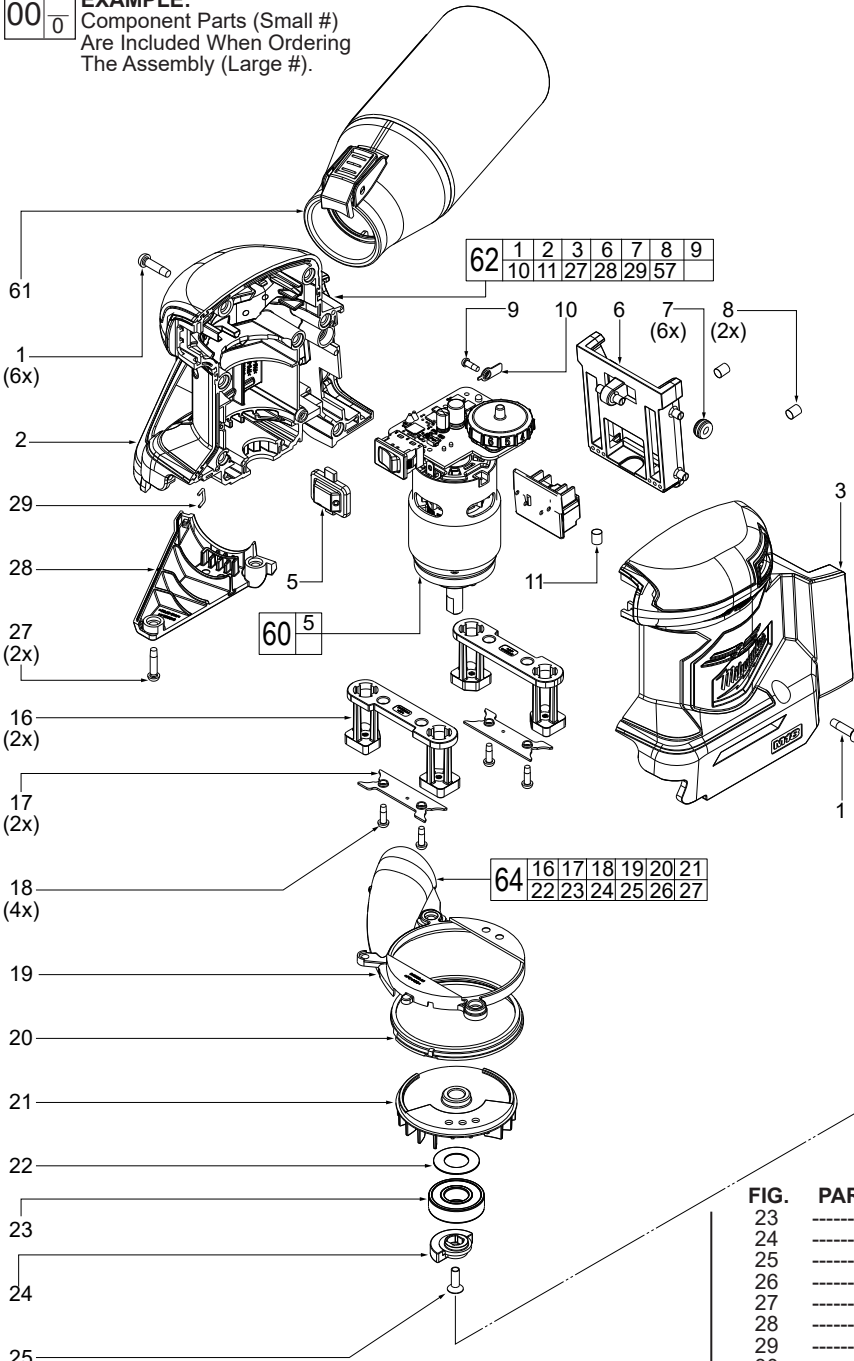


FIG.	PART NO.	DESCRIPTION OF PART	NO. REQ.
1	06-82-4003	M4 x 16mm Pan Hd. ST T-20 Screw	(8)
2	-----	Right Housing - Cover	(1)
3	-----	Left Housing - Support	(1)
5	-----	Rubber Switch Cover	(1)
6	-----	Battery Anti-Vibration Connector	(1)
7	-----	Battery Interface Rubber Isolators	(6)
8	-----	Rubber Knock	(2)
9	-----	M2.6 x 8mm Pan Hd. Taptite T-8 TP Screw	(1)
10	-----	Speed Dial Backing Plate	(1)
11	-----	Rubber Slug	(1)
16	-----	Torque Absorber	(2)
17	-----	Torque Absorber Plate	(2)
18	-----	M3 Pan Hd. Phillips Screw	(4)
19	-----	Dust Shroud - Top	(1)
20	-----	Fan Ring	(1)
21	-----	Fan	(1)
22	-----	Flat Washer	(1)

FIG.	PART NO.	DESCRIPTION OF PART	NO. REQ.
23	-----	Ball Bearing	(1)
24	-----	Counterweight	(1)
25	-----	M4 x 12mm Flat Hd. T-20 Mach. Screw	(1)
26	-----	Dust Shroud - Bottom	(1)
27	-----	M3.5 x 16mm Pan Hd. ST T-10 Screw	(5)
28	-----	Dust Shroud Bottom Cover	(1)
29	-----	Wire Clip	(1)
30	-----	Foam Dust Shield	(1)
31	-----	Base Plate Rubber Slug	(1)
43	-----	Base Plate O-Ring	(1)
44	-----	Cushion Pad Assembly	(1)
45	-----	M3 x 15mm T-20 Mach. Screw with Washer	(4)
55	-----	1/4 Sheet Sandpaper 120 Grit	(1)
55	-----	1/4 Sheet Sandpaper 220 Grit	(1)
56	43-56-0024	Paper Punch	(1)
57	12-20-0468	Service Nameplate (Not Shown)	(1)
60	14-50-0013	Motor/PCBA Service Assembly	(1)
61	42-16-0121	Dust Bag Service Assembly	(1)
62	14-34-0133	Housing Service Kit	(1)
63	44-66-0173	Base Plate Service Kit	(1)
64	22-84-0007	Fan/Shroud Service Kit	(1)
65	43-76-0059	Vacuum Adapter (Not Shown)	(1)
66	14-46-0267	Cushion Pad Service Kit	(1)

● = Fastening Sequence for Housing Screws

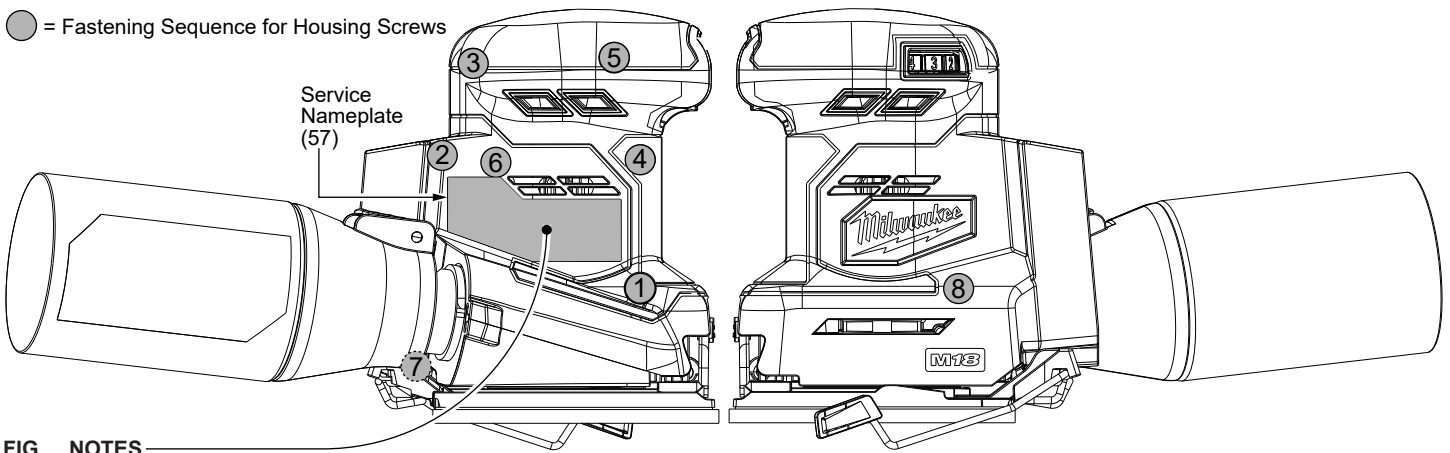
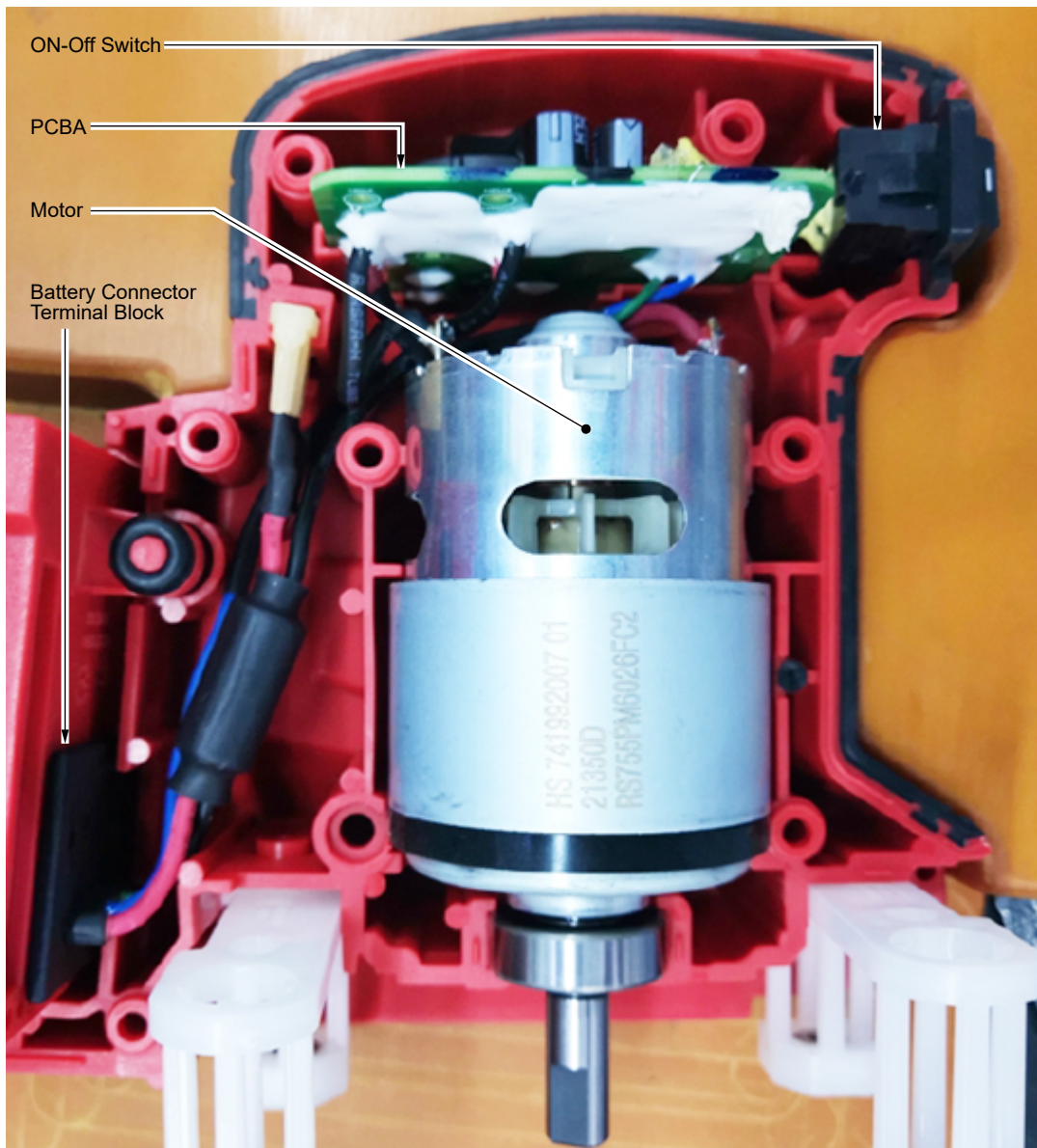


FIG. NOTES

57 A clean, dry surface is essential for proper performance for any adhesive system. Area intended for application of any adhesive label or nameplate must be prepared by cleaning with isopropyl alcohol. The solvent is to be applied with a clean, lint free applicator and the surface allowed to dry before applying the label or nameplate.

SCREW TORQUE SPECIFICATIONS

FIG.	PART NO.	WHERE USED	SEAT TORQUE	
			(KGF/CM)	(IN/LBS)
1	06-82-4003	Housing Halves (2,3)	16-20	13.8-17.3
9	-----	Speed Dial Backing Plate (10)	5-8	4.3-6.9
18	-----	Torque Absorber Plate (17)	4-8	3.4-6.9
25	-----	Counterweight (24)	30-36	26.0-31.2
27	-----	Dust Shroud - Bottom (26)	12-14	10.4-12.1
45	-----	Cushion Pad Assembly (44)	13-15	11.2-13.0



As an aid to reassembly, take notice of wire routing and position in wire guides and traps while dismantling tool.

Be sure that all components of the electronics kit are seated firmly and squarely in housing recesses.

Avoid pinched wires, be sure all wires and sleeves are pressed completely down in wire guides and traps.

Prior to installing housing cover onto handle support, be sure that there are no interferences.

Be sure to check for proper functionality of switches and dials after housing halves have been secured.

Install battery and verify proper operation of tool.