



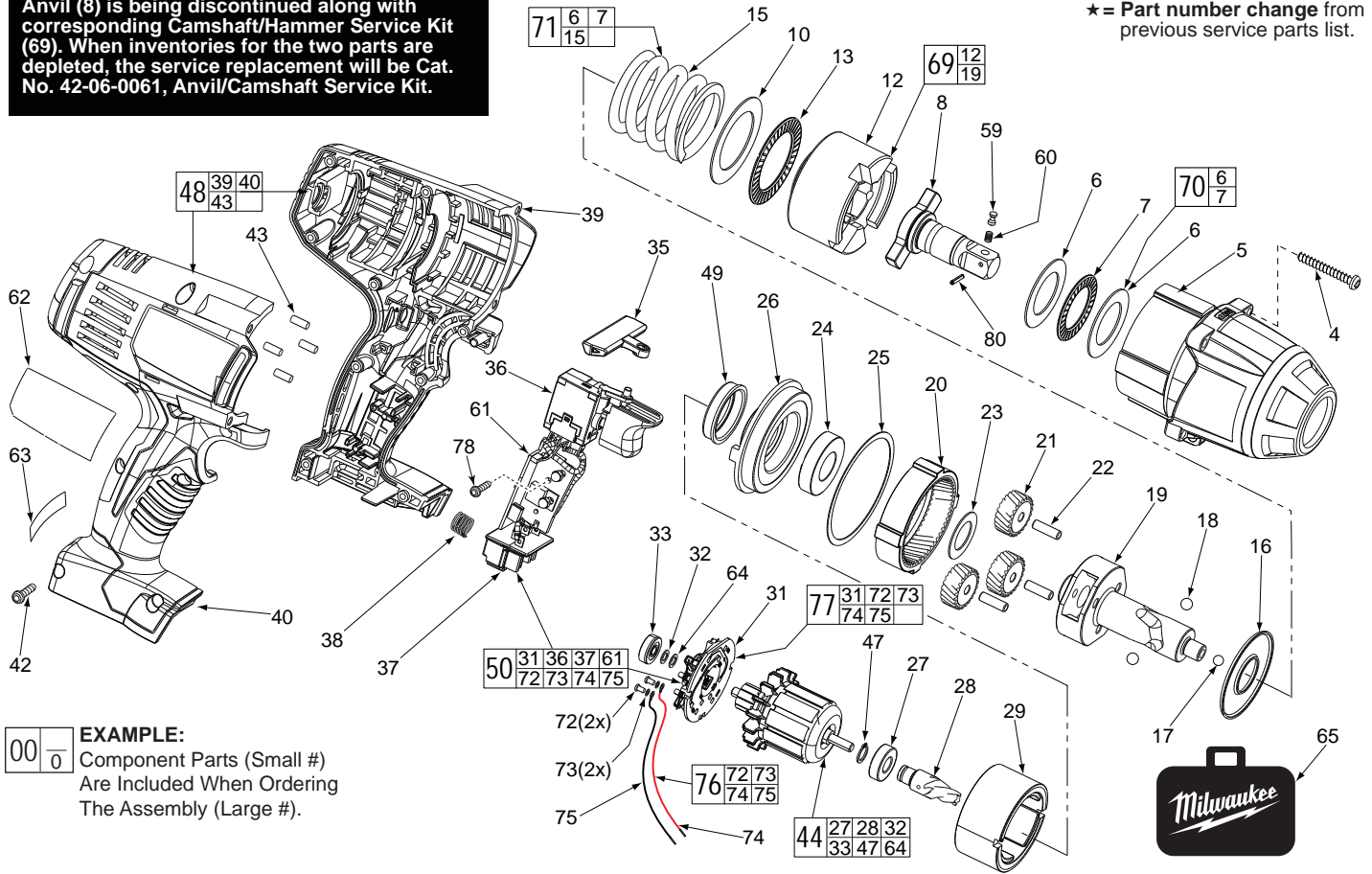
SERVICE PARTS LIST

BULLETIN NO.
54-26-2663

| SPECIFY CATALOG NO. AND SERIAL NO. WHEN ORDERING PARTS | | | |
|--|----------------|---------------------|-------------|
| M18™ 1/2" SQUARE IMPACT WRENCH | | | |
| CATALOG NO. | 2662-20 | STARTING SERIAL NO. | B79D |
| REVISED BULLETIN | | DATE | |
| 54-26-2662 | | Mar. 2016 | |
| WIRING INSTRUCTION See Page 3 | | | |

NOTE:
For the 2662-20 (serial break 'D'):
Anvil (8) is being discontinued along with corresponding Camshaft/Hammer Service Kit (69). When inventories for the two parts are depleted, the service replacement will be Cat. No. 42-06-0061, Anvil/Camshaft Service Kit.

★ = Part number change from previous service parts list.

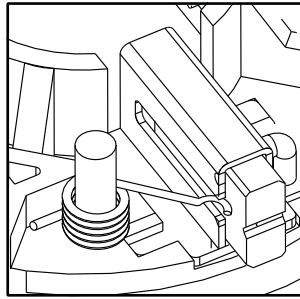
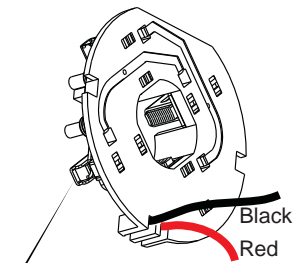


EXAMPLE:
00 0
Component Parts (Small #)
Are Included When Ordering
The Assembly (Large #).

| FIG. | PART NO. | DESCRIPTION OF PART | NO.REQ. |
|------|------------|--|---------|
| 4 | 05-88-5988 | M5 X 35mm Pan Hd. Slit. T-20 Screw | (4) |
| 5 | 14-30-0870 | Front Housing Assy. w/ Bushing & O-Rings | (1) |
| 6 | ----- | Washer | (2) |
| 7 | ----- | Thrust Bearing | (1) |
| ★ 8 | 42-06-0057 | 1/2" Anvil | (1) |
| 10 | 45-88-1006 | Washer | (1) |
| 12 | ----- | Hammer | (1) |
| 13 | 02-80-0200 | Thrust Bearing | (1) |
| 15 | ----- | Compression Spring | (1) |
| 16 | 45-88-1650 | Washer | (1) |
| 17 | 02-02-7010 | 7/32" Ball | (1) |
| 18 | 02-02-0250 | 1/4" Ball | (2) |
| 19 | ----- | Camshaft | (1) |
| 20 | 32-65-0260 | Ring Gear | (1) |
| 21 | 32-62-0500 | Planet Gear | (3) |
| 22 | 44-60-1960 | Pin | (3) |
| 23 | 45-88-1655 | Washer | (1) |
| 24 | 02-04-0375 | Ball Bearing | (1) |
| 25 | 34-40-0290 | Seal Ring | (1) |
| 26 | 44-66-0895 | Motor Mount Plate | (1) |
| 27 | ----- | Ball Bearing - Front | (1) |
| 28 | ----- | Pinion | (1) |
| 29 | 18-01-3025 | Service Field Assembly | (1) |
| 31 | ----- | Brush Card | (1) |
| 32 | ----- | Washer | (1) |
| 33 | ----- | Ball Bearing - Rear | (1) |
| 35 | 45-24-0570 | Forward / Reverse Shuttle | (1) |
| 36 | ----- | Switch | (1) |
| 37 | ----- | Connector Block | (1) |
| 38 | 40-50-1090 | Compression Spring | (1) |
| 39 | ----- | Handle - Left | (1) |
| 40 | ----- | Handle - Right | (1) |
| 42 | 06-82-0995 | M4 x 16mm Pan Hd. T-20 Screw | (9) |
| 43 | 45-30-0255 | Rubber Slug | (4) |
| 44 | 16-01-3030 | Armature Assembly | (1) |
| 47 | ----- | Retaining Ring | (1) |
| 48 | 31-44-0696 | Handle Set | (1) |

| FIG. | PART NO. | DESCRIPTION OF PART | NO.REQ. |
|------|------------|---------------------------------|---------|
| 49 | 45-22-0380 | Rubber Cap | (1) |
| 50 | 22-56-1451 | Switch/Connector Block Assembly | (1) |
| ★ 59 | 44-60-0597 | Detent Pin | (1) |
| ★ 60 | 40-50-0895 | Detent Spring | (1) |
| 61 | ----- | PCBA | (1) |
| 62 | 12-20-2670 | Service Nameplate Kit | (1) |
| 63 | 10-20-2695 | Warning Label | (1) |
| 64 | ----- | Washer | (1) |
| 65 | 42-55-2665 | Carrying Case, Optional | (1) |
| 69 | 14-46-2070 | Camshaft/Hammer Service Kit | (1) |
| 70 | 45-88-1877 | Washer/Bearing Kit | (1) |
| 71 | 14-46-0755 | Spring/Washer/Bearing Kit | (1) |
| 72 | 05-88-0928 | M3 x 5mm Pan Hd. T10 Screw | (2) |
| 73 | 45-88-1980 | Spring Washer | (2) |
| 74 | ----- | Leadwire Assembly - Red | (1) |
| 75 | ----- | Leadwire Assembly - Black | (1) |
| 76 | 14-46-2395 | Leadwire/Screw/Washer Kit | (1) |
| 77 | 14-46-2024 | Brush Card Assembly | (1) |
| 78 | 06-82-2395 | M2.6 x 10 Pan Hd. T-8 Screw | (1) |
| ★ 80 | 44-60-0465 | Roller Pin | (1) |

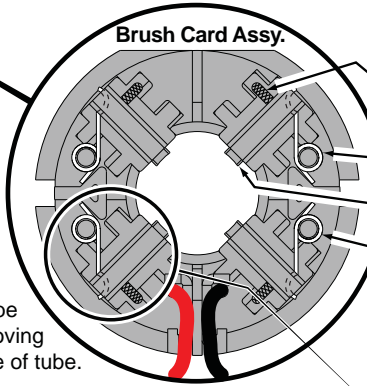
FIG. LUBRICATION
(Type 'Z' Grease, No. 49-08-7655):
20,21 Lightly coat the I.D. of the Ring Gear (20) and the center of the three Planet Gears (21) with grease.
19 Place a dab of grease in ball grooves of the Cam Shaft (19).
8 Lightly coat the front washer surface of Anvil (8) with grease, place a dab in the Ball hole on the backside of Anvil.
2 Coat outside grooves of Bushing (2) with grease.



NOTE:

As an aid to prevent damage to the armature commutator or the brushes when removing and installing the armature assembly, it is recommended to pull the carbon brushes partially back into the brush tube. The carbon brushes will be held in place with the brush spring moving from the rear of the brush to the side of the brush.

In the unlikely event that the spring pops off follow the instructions below.

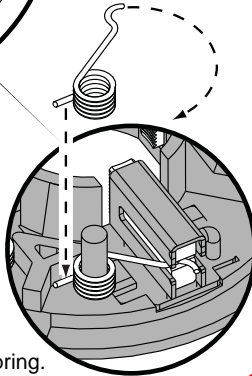


- Brush Shunt (4 places)
- Right Brush Spring (2x)
- Carbon Brush (4x)
- Left Brush Spring (2x)

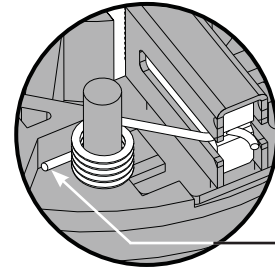
Be sure carbon brush is in brush tube with brush shunt moving freely in side groove of tube.

Place brush spring over post with short leg positioned downward as shown. Be sure spring is completely down with short leg trapped against 'Y' shaped wall on brush card.

While holding spring in place, bring the long leg of spring over the brush tube and through rear opening of tube. Position rounded hook of spring in groove on back of carbon brush. Be sure to check for free movement between carbon brush, brush shunt and brush spring.



Wrong



Correct

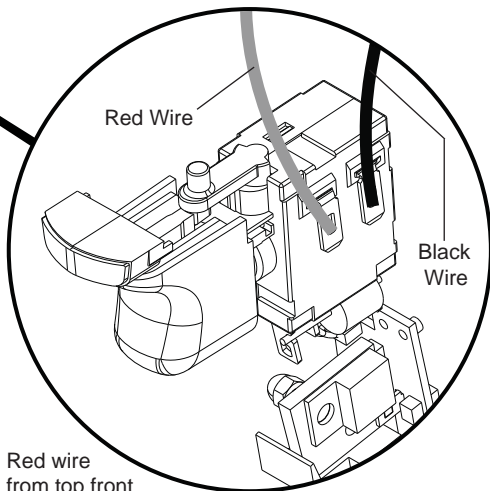
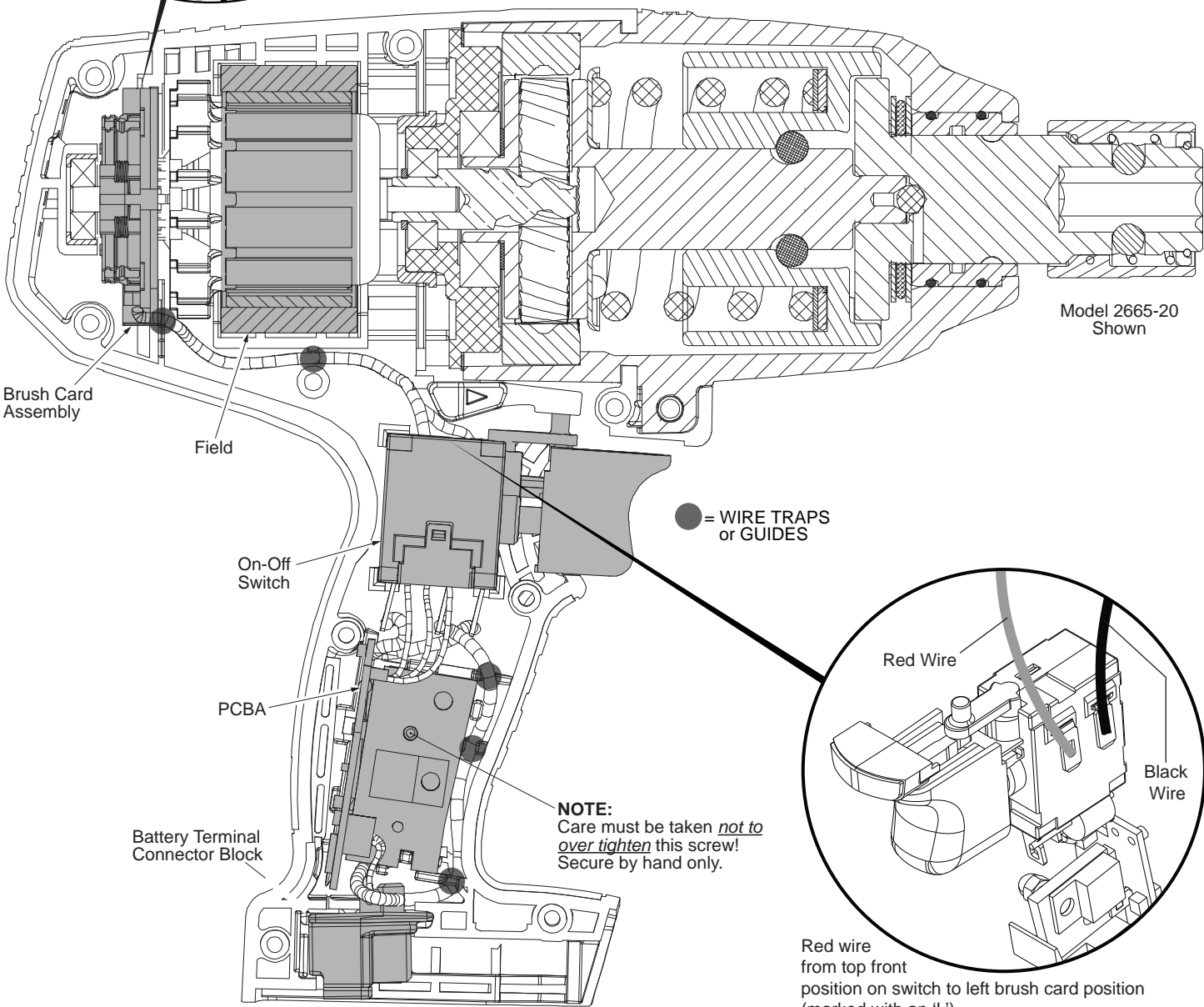
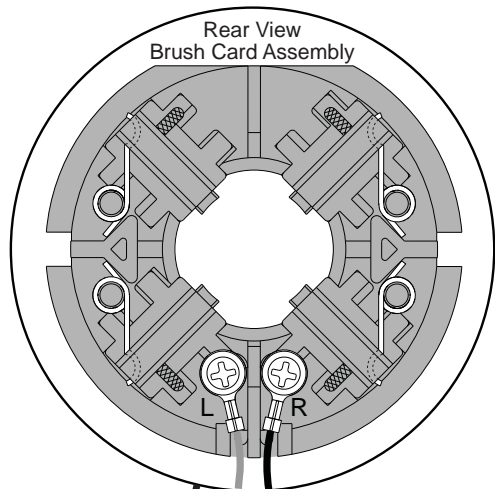
Short leg of spring to the bottom

AS AN AID TO REASSEMBLY, TAKE NOTICE OF WIRE ROUTING AND POSITION IN WIRE GUIDES AND TRAPS WHILE DISMANTLING TOOL.

BE SURE THAT ALL COMPONENTS OF THE ELECTRONICS KIT ARE SEATED FIRMLY AND SQUARELY IN THE HANDLE RECESSES.

AVOID PINCHED WIRES, BE SURE THAT ALL WIRES AND SLEEVES ARE PRESSED COMPLETELY DOWN IN WIRE GUIDES AND TRAPS.

PRIOR TO INSTALLING THE HANDLE COVER ONTO THE HANDLE SUPPORT, BE SURE THAT THERE ARE NO INTERFERENCES.



Red wire from top front position on switch to left brush card position (marked with an 'L').

Black wire from top rear position on switch to right brush card position (marked with an 'R').