



SERVICE PARTS LIST

BULLETIN NO.
54-40-2805

SPECIFY CATALOG NO. AND SERIAL NO. WHEN ORDERING PARTS		REVISED BULLETIN	DATE
M18™ FUEL JIG SAW (Barrel Grip)			June 2018
CATALOG NO.	2737B-20	STARTING SERIAL NO.	J71A
			WIRING INSTRUCTION SEE PAGE 3

EXAMPLE:
Component Parts (Small #) Are Included
When Ordering The Assembly (Large #).

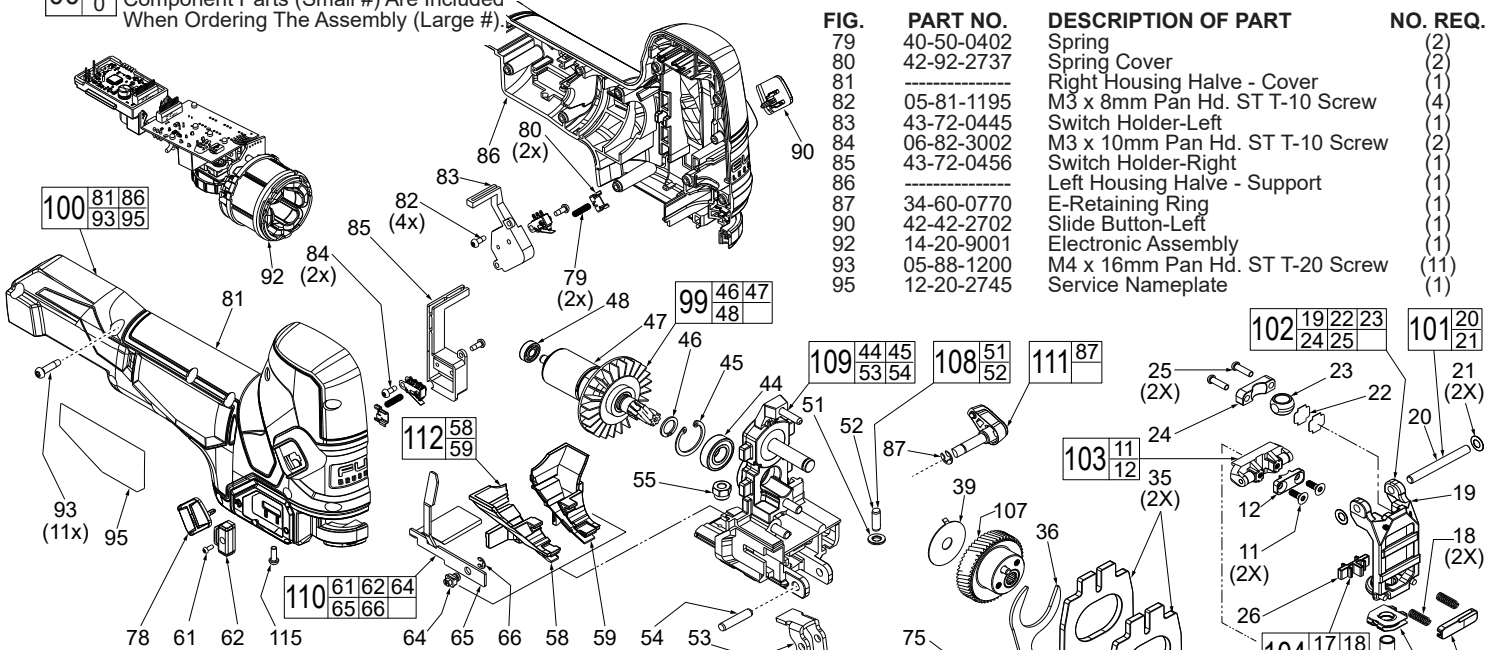
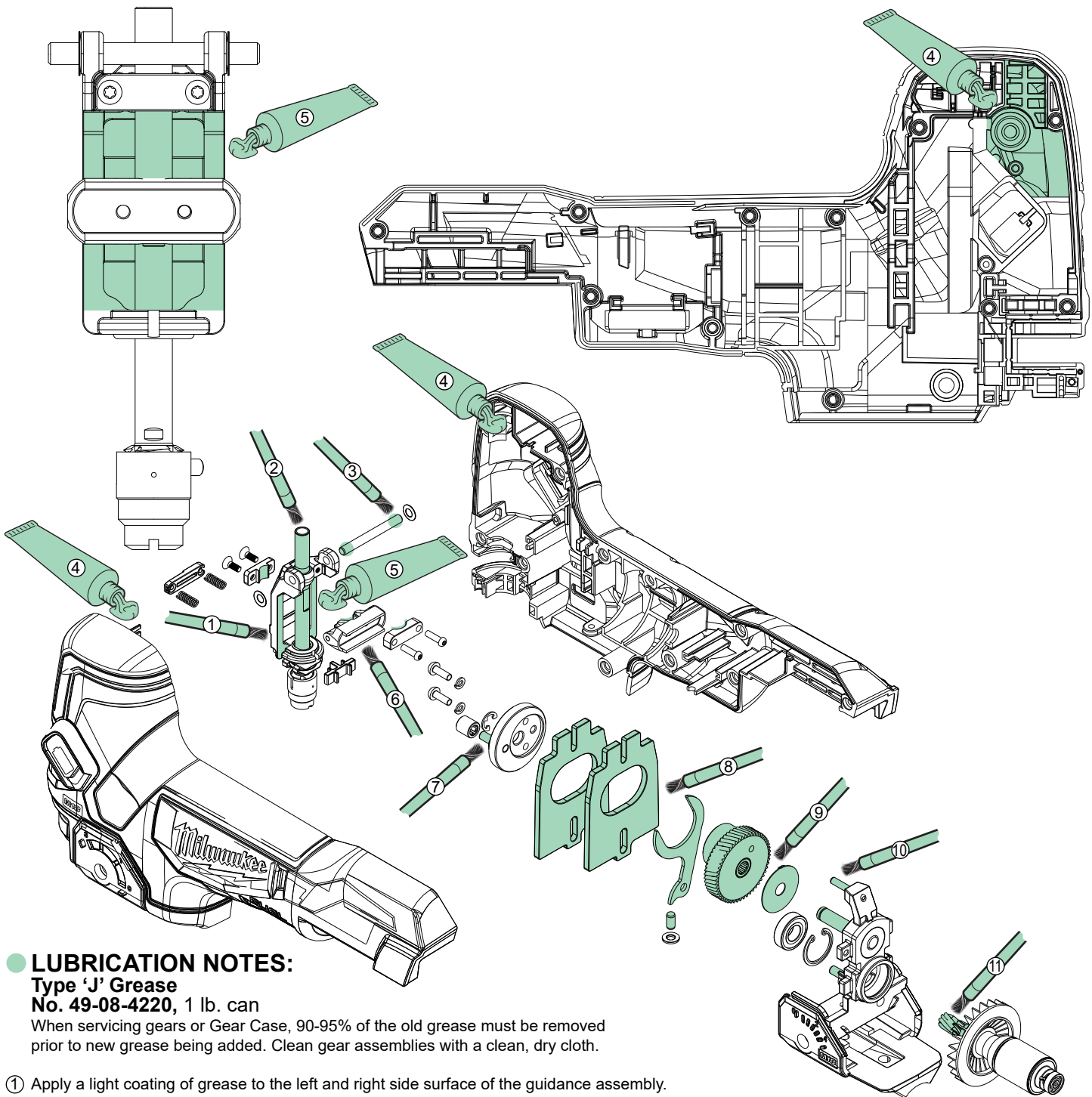


FIG.	PART NO.	DESCRIPTION OF PART	NO. REQ.
1	42-92-4001	Blade Cover	(1)
2	43-54-4001	Guard Wire	(1)
3	44-10-5001	Rotation Lever	(1)
4	40-50-1001	Spring	(1)
11	-----	M3.5 x 10mm Flat Hd. T-15 Mach. Scr.	(2)
12	-----	Link Cover	(1)
17	-----	Spring Holder	(1)
18	-----	Spring	(1)
19	-----	Spindle Guide	(1)
20	-----	Pin	(1)
21	-----	Disc Springs	(2)
22	-----	Leaf Spring	(2)
23	-----	Sliding Bearing	(1)
24	-----	Cover	(1)
25	05-88-5380	M3.5 x 12mm Pan Hd. T-10 Mach. Scr.	(2)
26	-----	Pressing Plate	(1)
30	02-50-1260	Needle Bearing	(1)
31	34-60-0750	E-Retaining Ring	(1)
32	05-81-1070	M4 x 12mm Pan Hd. T-20 Mach. Screw	(2)
33	45-88-1890	Spring Washer	(3)
34	44-66-1510	Eccentricity Plate	(1)
35	42-28-2001	Balance Block	(1)
36	44-66-1630	Drive Plate	(1)
39	45-88-3070	Washer	(1)
44	-----	Ball Bearing	(1)
45	-----	C-Retaining Ring	(1)
46	-----	Retaining Ring	(1)
47	-----	Rotor	(1)
48	-----	Ball Bearing	(1)
51	-----	Felt Seal	(1)
52	-----	Pin	(1)
53	-----	Blade Guide Assembly	(1)
54	-----	Pin	(1)
55	06-55-0007	M6 Hex Nut	(1)
58	-----	Right Air Channel	(1)
59	-----	Left Air Channel	(1)
61	06-82-2737	M2 x 5mm Pan Hd. T-6 Screw	(1)
62	-----	Blower Shut Off Button	(1)
64	-----	Blower Shut Off Pin	(1)
65	-----	Blower Shuttle	(1)
66	34-60-0401	E-Retaining Ring	(1)
67	28-06-6001	Base	(1)
68	43-84-1030	Anti-Splintering Insert	(1)
69	31-17-0570	Base Clamp	(1)
70	05-74-1001	M6 Screw Bolt	(1)
71	42-92-2001	Base Insert	(1)
72	05-88-1208	M4 x 13mm Flat Head T-20 Screw	(2)
73	05-81-1050	M4 x 10mm Flat Head T-20 Screw	(4)
74	31-15-0691	Base Cover	(1)
75	31-03-5002	Vacuum Attachment	(1)
76	45-96-8001	Wrench	(1)
77	40-50-2737	Spring Plate	(2)
78	42-42-2701	Slide Button-Right	(1)

FIG.	PART NO.	DESCRIPTION OF PART	NO. REQ.
79	40-50-0402	Spring	(2)
80	42-92-2737	Spring Cover	(2)
81	-----	Right Housing Halve - Cover	(1)
82	05-81-1195	M3 x 8mm Pan Hd. ST T-10 Screw	(4)
83	43-72-0445	Switch Holder-Left	(1)
84	06-82-3002	M3 x 10mm Pan Hd. ST T-10 Screw	(2)
85	43-72-0456	Switch Holder-Right	(1)
86	-----	Left Housing Halve - Support	(1)
87	34-60-0770	E-Retaining Ring	(1)
90	42-42-2702	Slide Button-Left	(1)
92	14-20-9001	Electronic Assembly	(1)
93	05-88-1200	M4 x 16mm Pan Hd. ST T-20 Screw	(11)
95	12-20-2745	Service Nameplate	(1)
100	81/86/93/95	Handle Halve Kit	(1)
101	14-46-1101	Pin and Washer Kit	(1)
102	42-36-2001	Guidance Assembly	(1)
103	44-14-3001	Connecting Link Assembly	(1)
104	44-66-4010	Spring Holder/Pressing Plate Kit	(1)
105	45-06-5001	Sealing Assembly	(1)
106	38-50-6001	Spindle Assembly	(1)
107	32-30-8001	Output Gear Assembly	(1)
108	14-46-7001	Orbit Pin and Seal Kit	(1)
109	28-14-8001	Gear Case Assembly	(1)
110	42-14-9003	Blower Assembly	(1)
111	30-58-0001	Orbit Adjustment Lever Assembly	(1)
112	43-56-1001	Channel Kit	(1)
115	06-82-0792	Pan Hd. Screw	(1)
116	42-92-0031	Lens Cover	(1)
116	10-20-5472	Warning Label (Not Shown)	(1)

FIG.	PART NO.	DESCRIPTION OF PART	NO. REQ.
99	16-01-0001	Rotor Assembly	(1)
100	31-44-2737	Handle Halve Kit	(1)
101	14-46-1101	Pin and Washer Kit	(1)
102	42-36-2001	Guidance Assembly	(1)
103	44-14-3001	Connecting Link Assembly	(1)
104	44-66-4010	Spring Holder/Pressing Plate Kit	(1)
105	45-06-5001	Sealing Assembly	(1)
106	38-50-6001	Spindle Assembly	(1)
107	32-30-8001	Output Gear Assembly	(1)
108	14-46-7001	Orbit Pin and Seal Kit	(1)
109	28-14-8001	Gear Case Assembly	(1)
110	42-14-9003	Blower Assembly	(1)
111	30-58-0001	Orbit Adjustment Lever Assembly	(1)
112	43-56-1001	Channel Kit	(1)
115	06-82-0792	Pan Hd. Screw	(1)
116	42-92-0031	Lens Cover	(1)
116	10-20-5472	Warning Label (Not Shown)	(1)

NOTE:
#1 must be removed if using #116



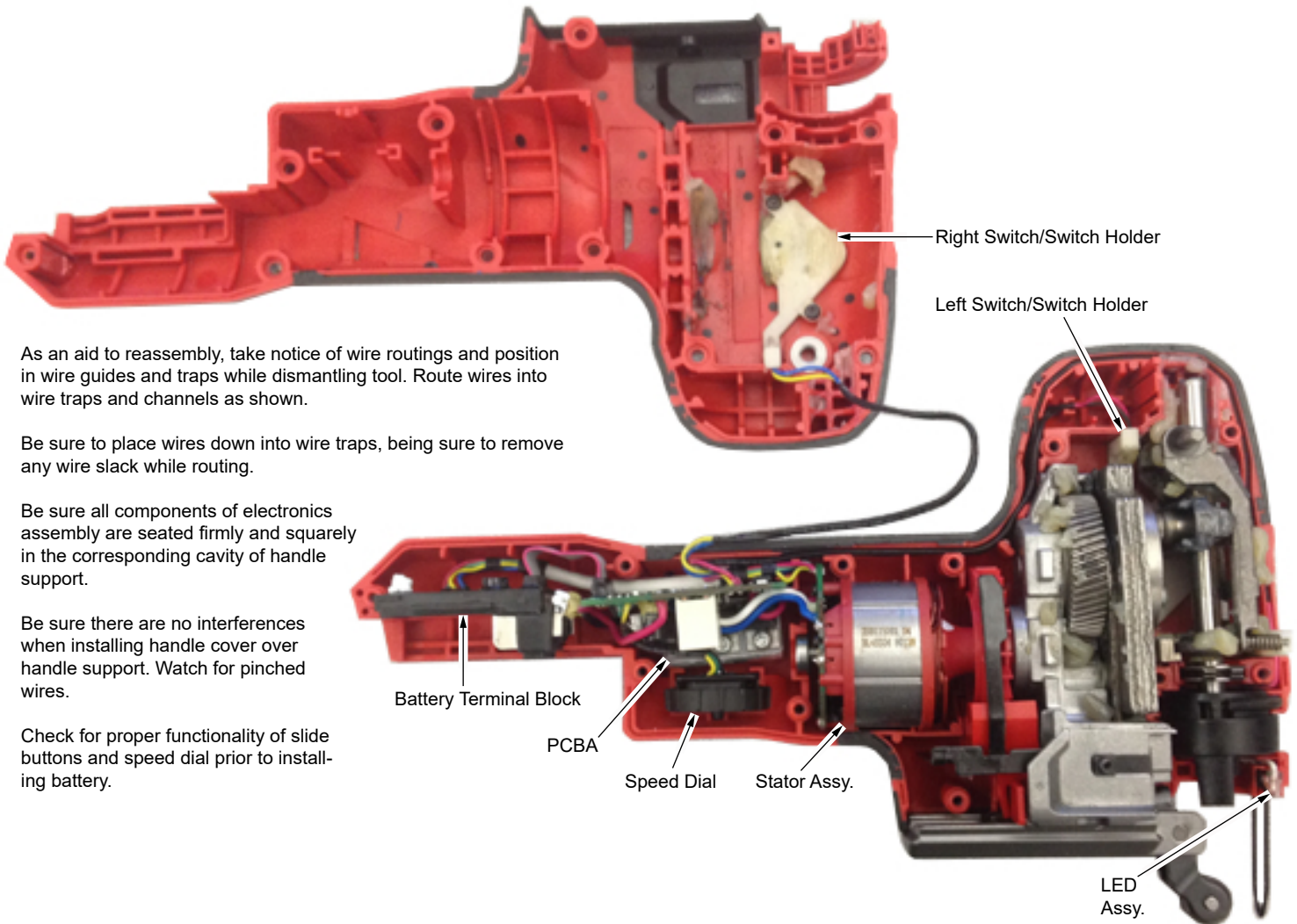
● LUBRICATION NOTES:

Type 'J' Grease

No. 49-08-4220, 1 lb. can

When servicing gears or Gear Case, 90-95% of the old grease must be removed prior to new grease being added. Clean gear assemblies with a clean, dry cloth.

- ① Apply a light coating of grease to the left and right side surface of the guidance assembly.
- ② Brush a light coating of grease to the entire shaft of spindle assembly.
- ③ Apply a light coating of grease to both ends of pin.
- ④ Place 2 grams (4 grams total) into each front cavity of housing support and housing cover.
- ⑤ Place approximately 9 grams of grease over and around spindle of guidance assembly.
- ⑥ Lightly coat concave surface of link cover and connecting link assembly.
- ⑦ Lightly coat surface of pin on the eccentricity plate with grease .
- ⑧ Brush a thin coat of grease to the entire surface of both balance blocks and drive plate.
- ⑨ Completely coat the output gear assembly with grease, being sure to cover all gear teeth. Lightly cover the washer with grease.
- ⑩ Brush all four pins of the gear case assembly with a light coating of grease.
- ⑪ Brush grease on the rotor pinion being sure to cover all the teeth.



As an aid to reassembly, take notice of wire routings and position in wire guides and traps while dismantling tool. Route wires into wire traps and channels as shown.

Be sure to place wires down into wire traps, being sure to remove any wire slack while routing.

Be sure all components of electronics assembly are seated firmly and squarely in the corresponding cavity of handle support.

Be sure there are no interferences when installing handle cover over handle support. Watch for pinched wires.

Check for proper functionality of slide buttons and speed dial prior to installing battery.

