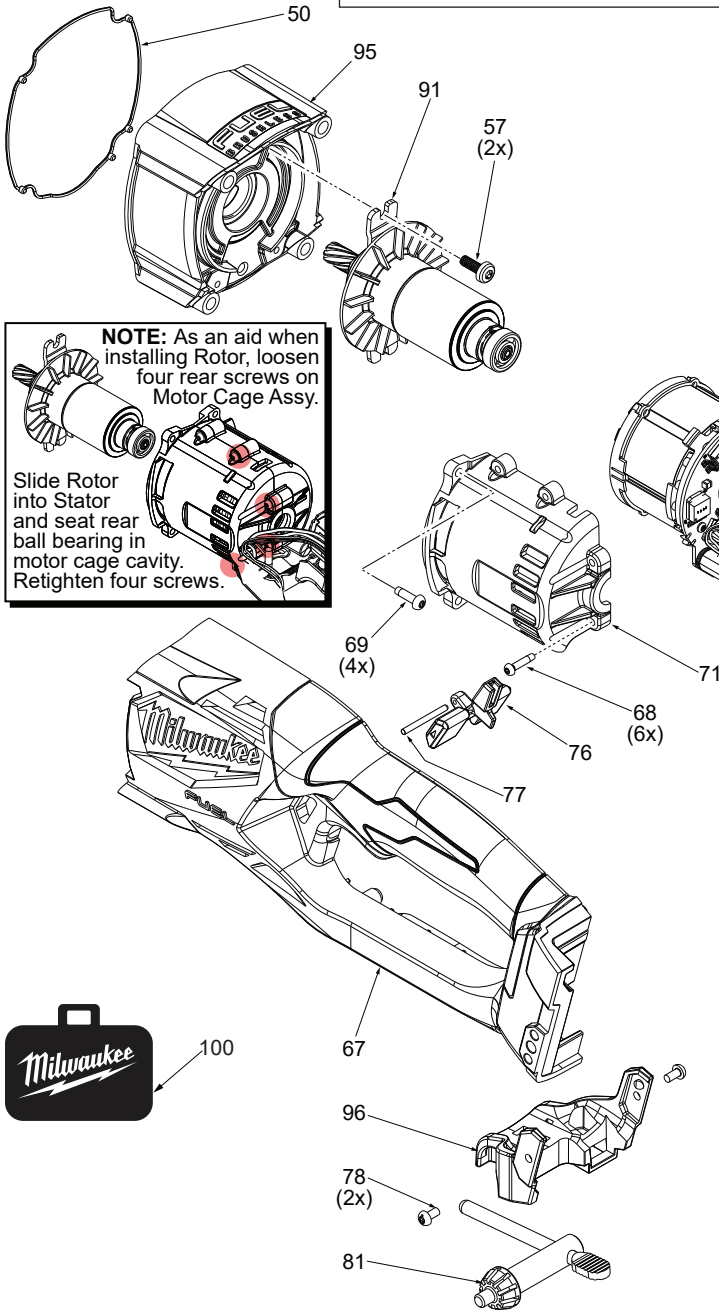




SERVICE PARTS LIST

BULLETIN NO.
54-10-2740

SPECIFY CATALOG NO. AND SERIAL NO. WHEN ORDERING PARTS		REVISED BULLETIN	DATE
M18™ FUEL™ 1/2" Super-Hawg®			July 2019
CATALOG NO.	2809-20	STARTING SERIAL NO.	K57A
		WIRING INSTRUCTION See pages 4 & 5	



EXAMPLE:
Component Parts (Small #) Are Included
When Ordering The Assembly (Large #).

FIG.	PART NO.	DESCRIPTION OF PART	NO. REQ.
26	06-82-0044	M4 x 18mm Pan Hd. ST T-20 Screw	(8)
50	43-44-0705	Gasket	(1)
57	06-82-5324	10-24 x 1/2" Pan Hd. Tapt. T-25 Screw	(2)
65	-----	Right Handle Half (Cover)	(1)
66	12-20-0233	Service Nameplate	(1)
67	-----	Left Handle Half (Support)	(1)
68	06-82-1080	M3 x 14mm T-10 ST Screw	(6)
69	06-82-5285	6-32 x .5 Pan Hd. Tapt. T-15 Screw	(4)
70	-----	Motor Cage Support - Right	(1)
71	-----	Motor Cage Cover - Left	(1)
76	42-42-0013	Forward/Reverse Shuttle	(1)
77	44-60-2210	Pin	(1)
78	06-82-0130	6-32 x 5/16" Pan Hd. T-15 Machine Screw	(2)
81	48-66-3280	Chuck Key	(1)
90	31-44-0094	Handle Assembly	(1)
91	16-01-0037	Rotor Assembly	(1)
92	14-20-0113	Electronics Assembly Contains: Stator, PCBA, On-Off Switch, LED, Battery Connector Block	(1)
93	23-16-0012	Motor Cage Assembly	(1)
95	14-13-0015	Diaphragm Assembly with Needle Bearings	(1)
96	43-72-0012	Key Holder Assembly	(1)
100	48-55-3565	FUEL™ Contractor Bag - Large	(1)

SCREW TORQUE CHART

Item	Part Number	Seat Torque (Kg./cm.) (In./lbs.)	
5	05-88-9915	60-65	52-56
7	05-88-0510	30-45	26-39
16	06-82-5411	45-55	30-43
19	06-75-3155	140-160	122-139
26	06-82-0044	16-20	13-17
30	06-82-5360	75-86	65-74
57	06-82-5324	46-58	40-50
68	06-82-7240	13-15	11-13
69	06-82-5285	12-17	10-14
78	06-82-0130	6-10	5-8
102	06-82-2368	8-12	7-10

IMPORTANT!
To prevent damage to the High Voltage Wire Assembly, a component in the Electronics Assembly #92, see service note on page 4 prior to removing the Motor Cage Cover #71.

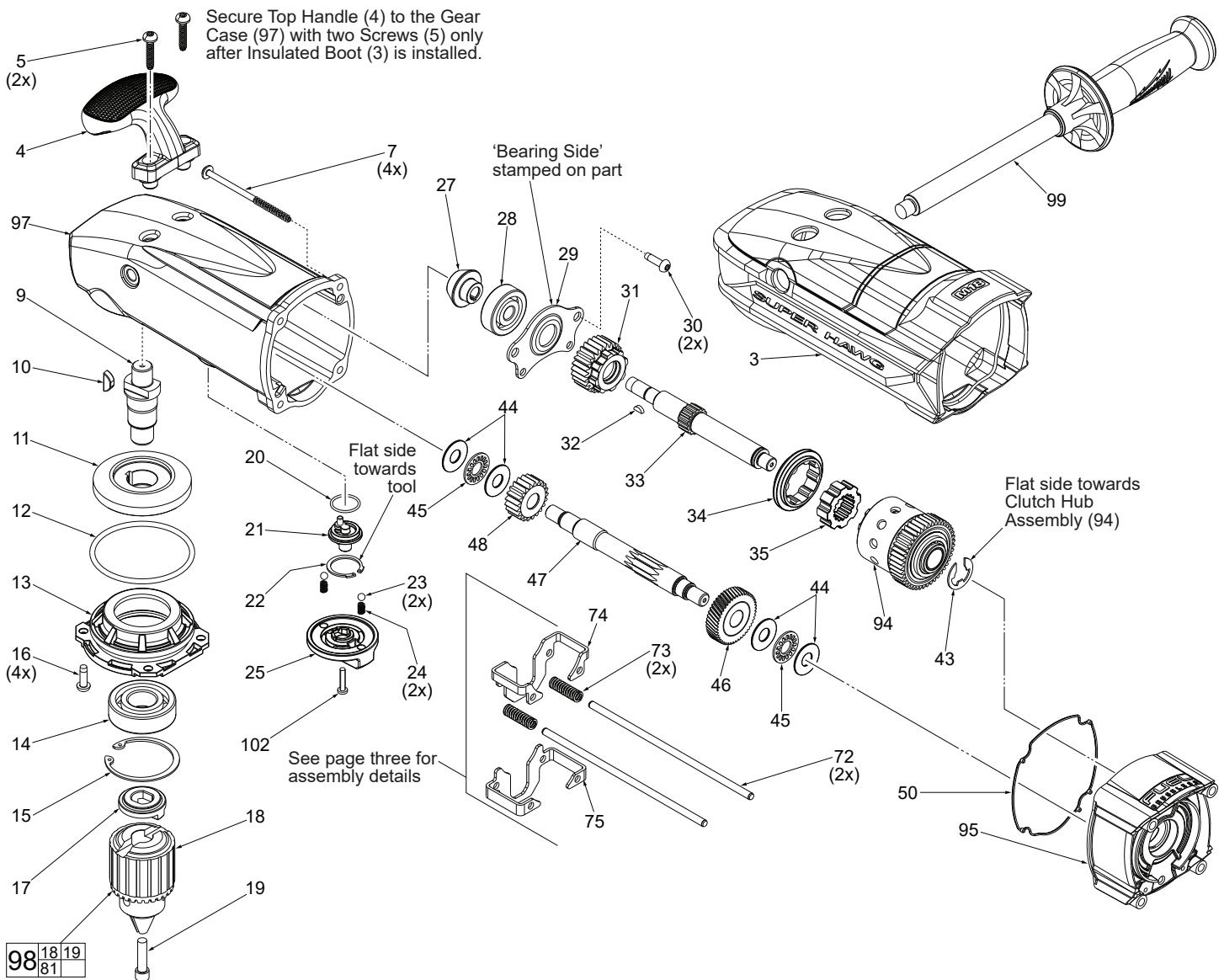
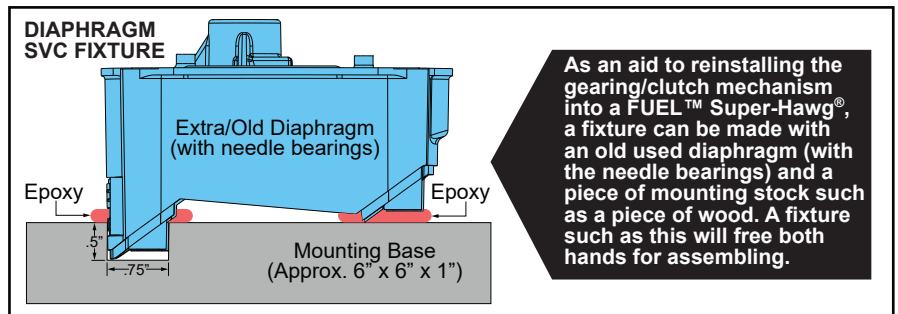
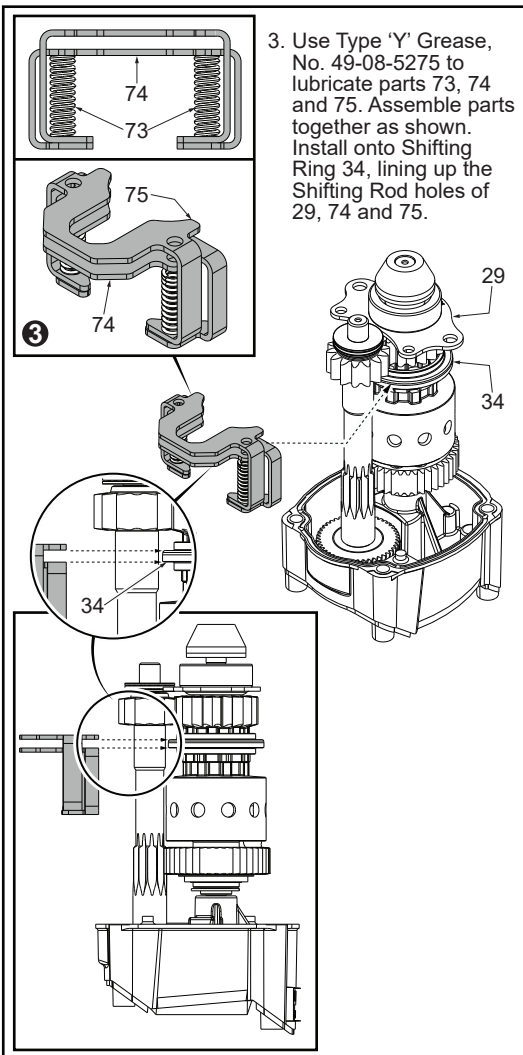
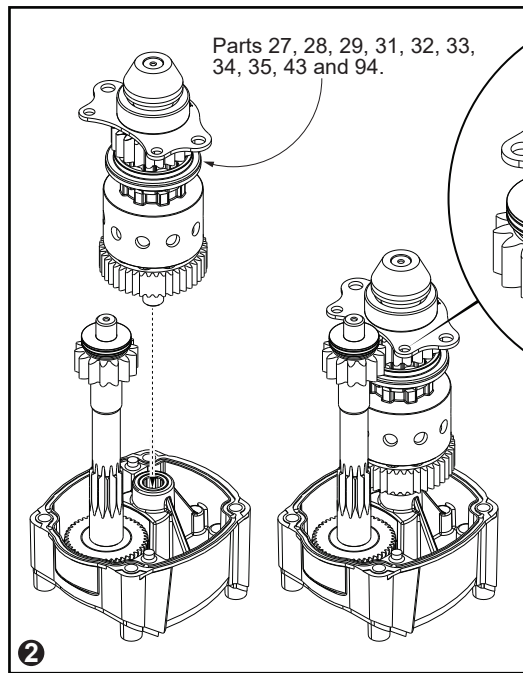
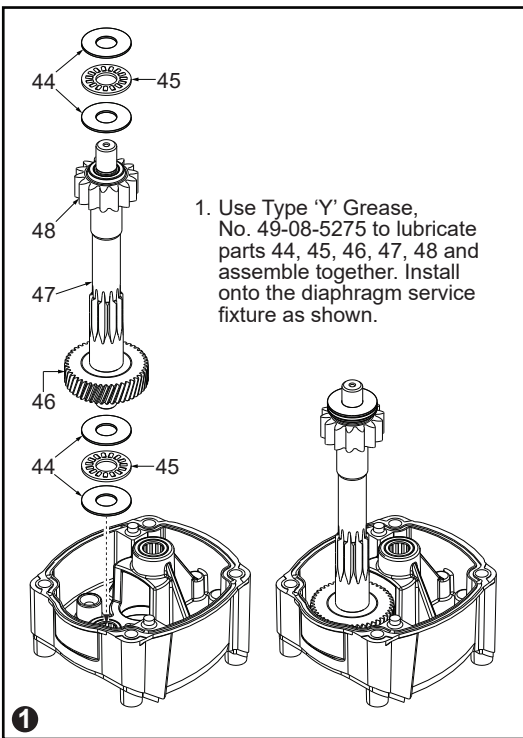
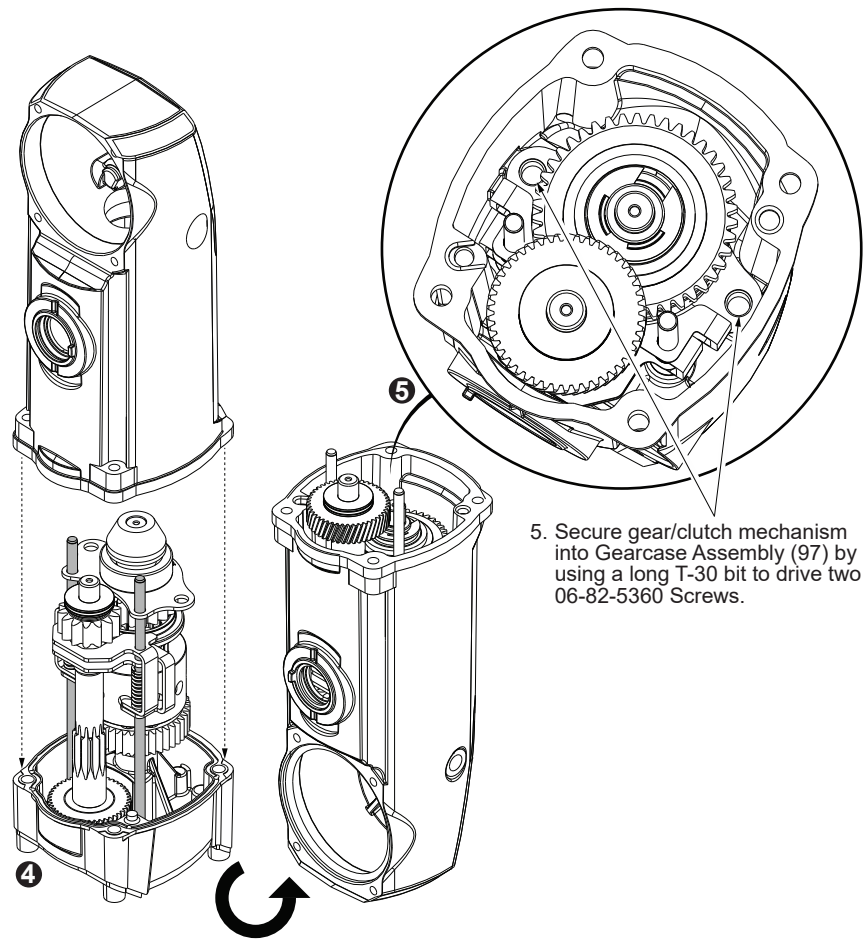
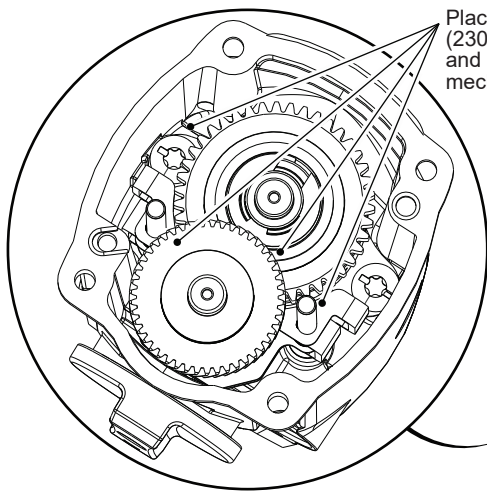


FIG.	PART NO.	DESCRIPTION OF PART	NO. REQ.	FIG.	PART NO.	DESCRIPTION OF PART	NO. REQ.
3	45-12-0020	Insulated Boot	(1)	44	45-88-0395	Thrust Washer	(4)
4	31-44-2709	Top Handle	(1)	45	02-80-0180	Thrust Bearing	(2)
5	05-88-9915	M5 x 1.23 x 25mm Pan Hd. DG T-25 Screw	(2)	46	32-42-0200	1st Intermediate Gear	(1)
7	05-88-0510	M5 x 80mm Pan Hd. T-20 PT Screw	(4)	47	32-60-0018	2nd Intermediate Low Speed Pinion Shaft	(1)
9	38-50-0027	Spindle	(1)	48	32-60-0405	2nd Intermediate High Speed Pinion Shaft	(1)
10	06-42-2400	Woodruff Key	(1)	50	43-44-0705	Gasket	(1)
11	32-05-0400	Bevel Gear	(1)	72	44-94-0012	Shifting Rod	(2)
12	34-40-0005	O-Ring	(1)	73	40-50-0067	Shifter Spring	(2)
13	28-53-0095	Spindle Mounting Hub	(1)	74	42-76-0281	Short Shift	(1)
14	02-04-2031	Ball Bearing	(1)	75	42-76-0271	Long Shift	(1)
15	34-80-2980	Retaining Ring	(1)	94	14-08-0010	Clutch Hub Assembly	(1)
16	06-82-5411	10-24 x .625 Pan Hd. Taptite T-25 Screw	(4)	95	14-13-0015	Diaphragm Assembly with Needle Bearings	(1)
17	28-53-0115	Chuck Hub	(1)	97	14-30-0505	Gearcase Assembly with Needle Bearings	(1)
18	-----	1/2" Keyed Chuck	(1)	98	48-66-1481	1/2" Keyed Chuck with Chuck Key & Screw	(1)
19	06-75-3155	1/4-20 x 1" Socket Head Screw-LH Thread	(1)	99	14-34-0030	Side Handle Assembly	(1)
20	34-40-1570	O-Ring	(1)	102	06-82-2368	3.5 x 16mm Pan Hd. ST T-10 Screw	(1)
21	28-53-0085	Shifting Hub	(1)				
22	44-86-0032	Retaining Ring	(1)				
23	02-02-1300	Steel Ball	(2)				
24	40-50-8690	Detent Spring	(2)				
25	43-98-0067	Shifting Knob	(1)				
27	32-60-0280	Bevel Pinion	(1)				
28	02-04-1055	Ball Bearing	(1)				
29	44-66-1005	Bearing Retaining Plate	(1)				
30	06-82-5360	1/4-20 x .625 Pan Hd. Taptite T-30 Screw	(2)				
31	32-44-0500	2nd Intermediate High Speed Gear Assembly	(1)				
32	06-42-0800	Woodruff Key	(1)				
33	36-66-0300	2nd Intermediate Shaft	(1)				
34	42-90-0015	Shifting Ring	(1)				
35	43-12-0065	Drive Hub	(1)				
43	34-60-1450	E-Ring	(1)				



4. Carefully feed both Shifting Rods through the holes in the Bearing Retaining Plate and the Long and Short Shift Plates down into the corresponding holes in the service fixture. Carefully place the Gearcase Assembly over the gearing and onto the service fixture. Turn the assembly over and remove the diaphragm service fixture.

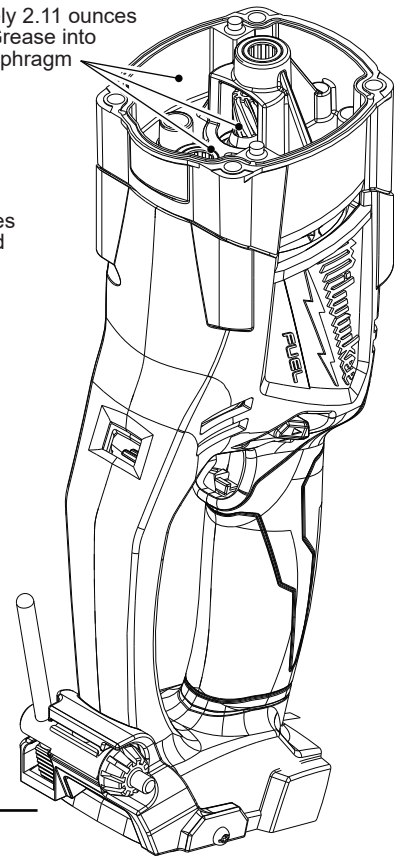
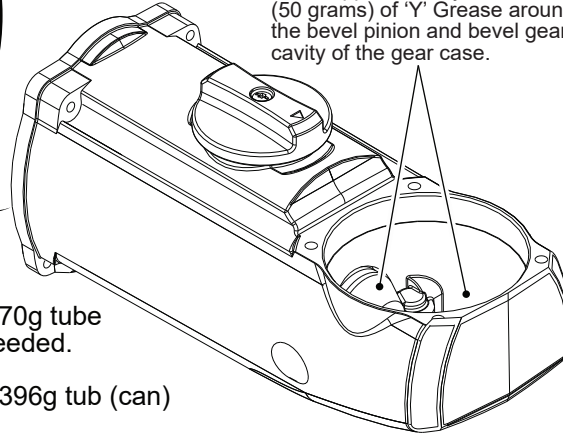




Place approximately 8.11 ounces (230 grams) of 'Y' Grease down and around the gear and clutch mechanism inside the gear case.

Place approximately 2.11 ounces (60 grams) of 'Y' Grease into this area of the diaphragm assembly.

Place approximately 1.76 ounces (50 grams) of 'Y' Grease around the bevel pinion and bevel gear cavity of the gear case.



LUBRICATION NOTES:

Type 'Y' Grease No. 49-08-5270, 6oz./170g tube
The entire amount of two tubes will be needed.

or
Type 'Y' Grease No. 49-08-5275, 14oz./396g tub (can)

When servicing, remove 90-95% of the existing grease prior to installing Type 'Y'.
Original grease may be similar in color but not compatible with 'Y'.

DO NOT wash Clutch Hub Assembly #94. Prior to reinstalling, clean gear assemblies with a clean, dry cloth.

WIRING

As an aid to reassembly, take notice of wire routing and position in wire guides and traps while dismantling tool.

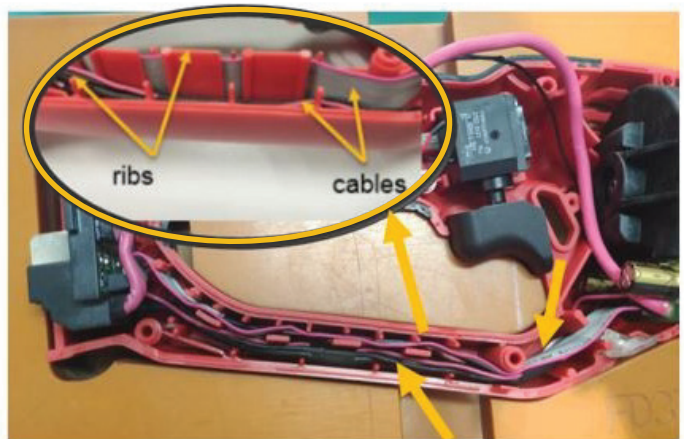
Be sure that all components of the electronics kit are seated firmly and squarely in the handle recesses.

Avoid pinched wires, be sure that all wires and sleeves are pressed completely down in wire guides and traps.

Prior to installing the handle cover onto the handle support, be sure that there are no interferences.

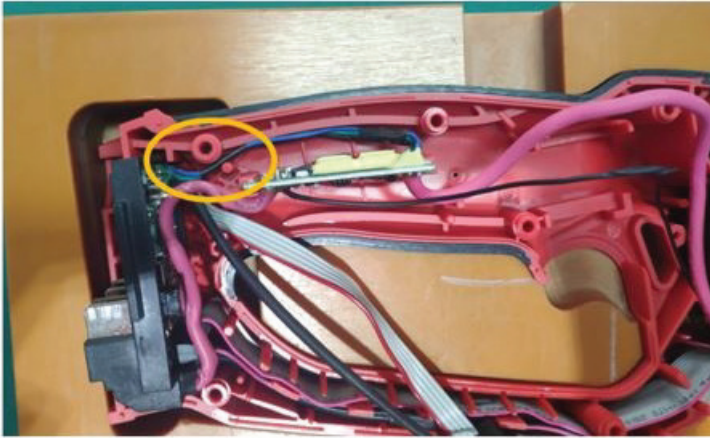


Step 1.
Place the LED into the slot as picture shows.

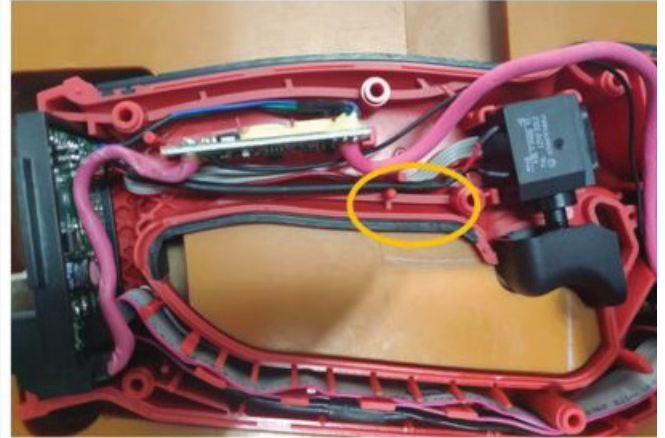


Step 2.
Place the ribbon cable and wires in traps and make sure they are below the ribs.

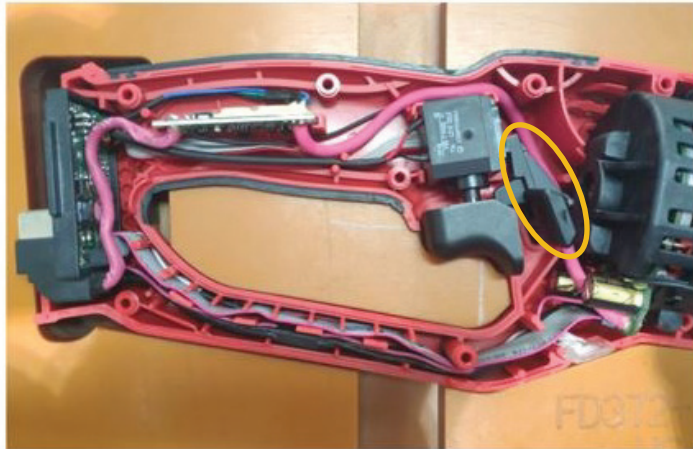
WIRING



Step 3.
Place the SSD Board.



Step 4.
Place the Switch and Switch Wire as shown in the picture above.



Step 5.
Place the Forward/Reverse Shuttle in handle as picture shows above.



Step 6.
Assemble Handle Halves together and secure with screws in the sequence shown above.