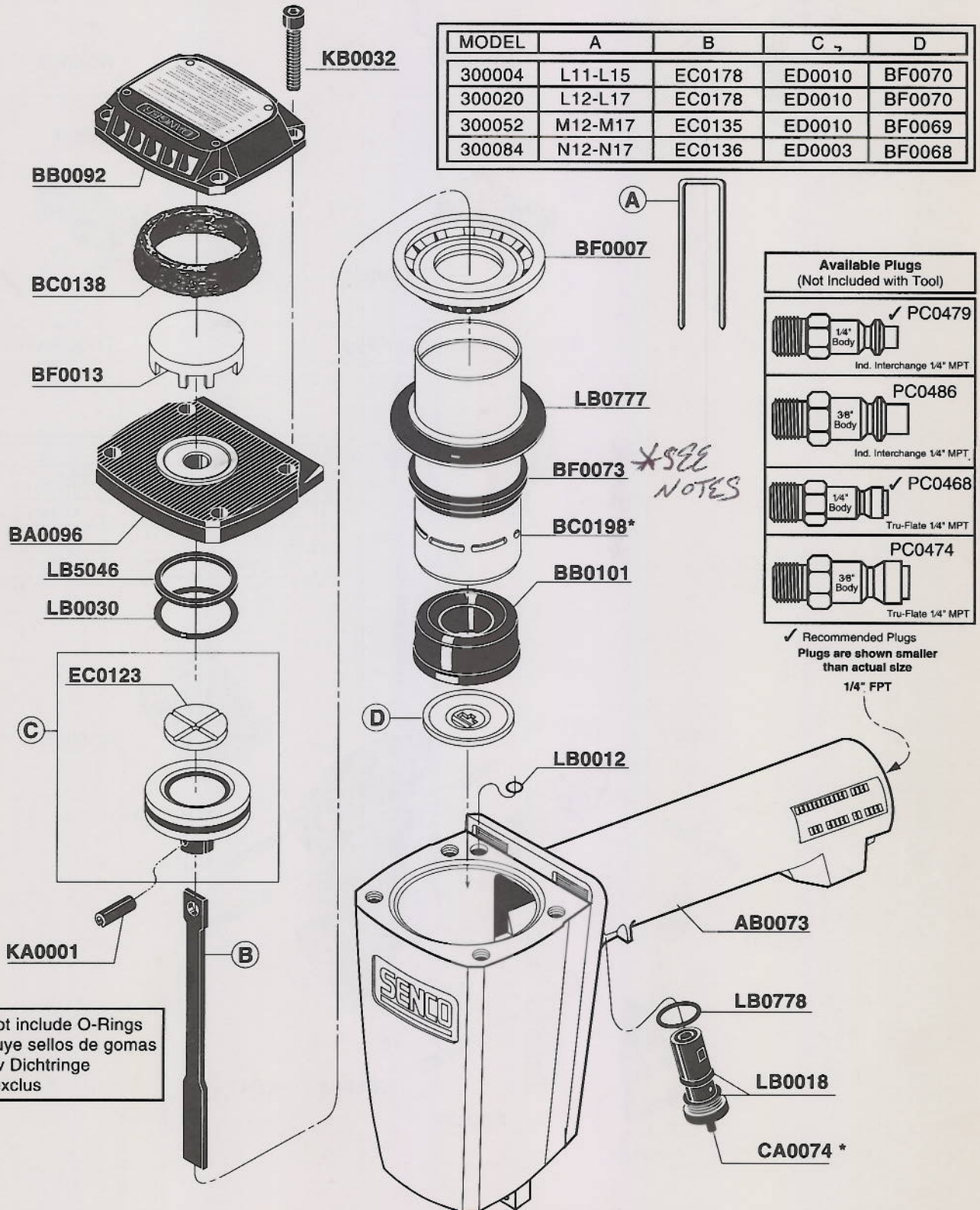


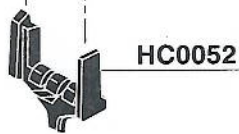
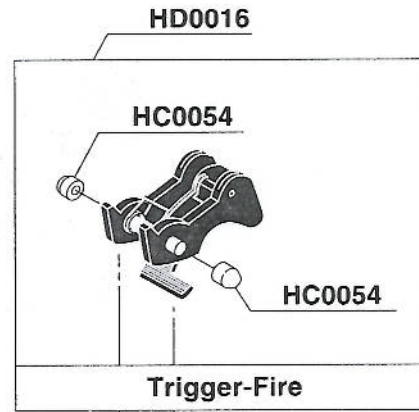
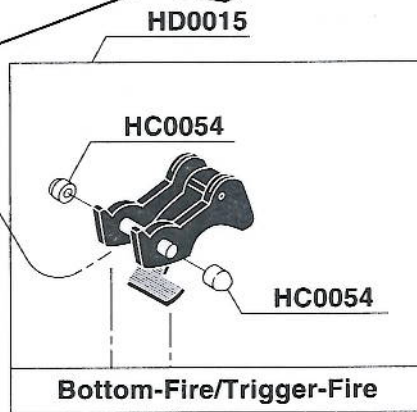
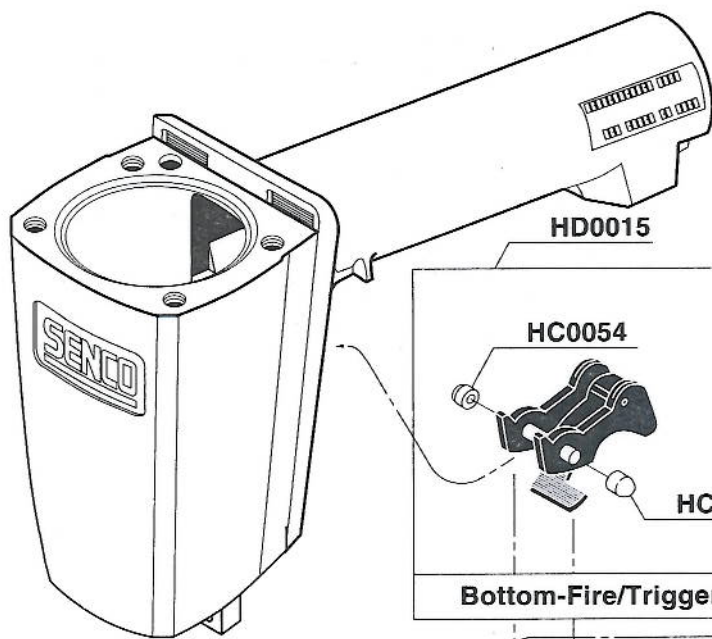
SKS Stapler

| MODEL | A | B | C | D |
|--------|---------|--------|--------|--------|
| 300004 | L11-L15 | EC0178 | ED0010 | BF0070 |
| 300020 | L12-L17 | EC0178 | ED0010 | BF0070 |
| 300052 | M12-M17 | EC0135 | ED0010 | BF0069 |
| 300084 | N12-N17 | EC0136 | ED0003 | BF0068 |

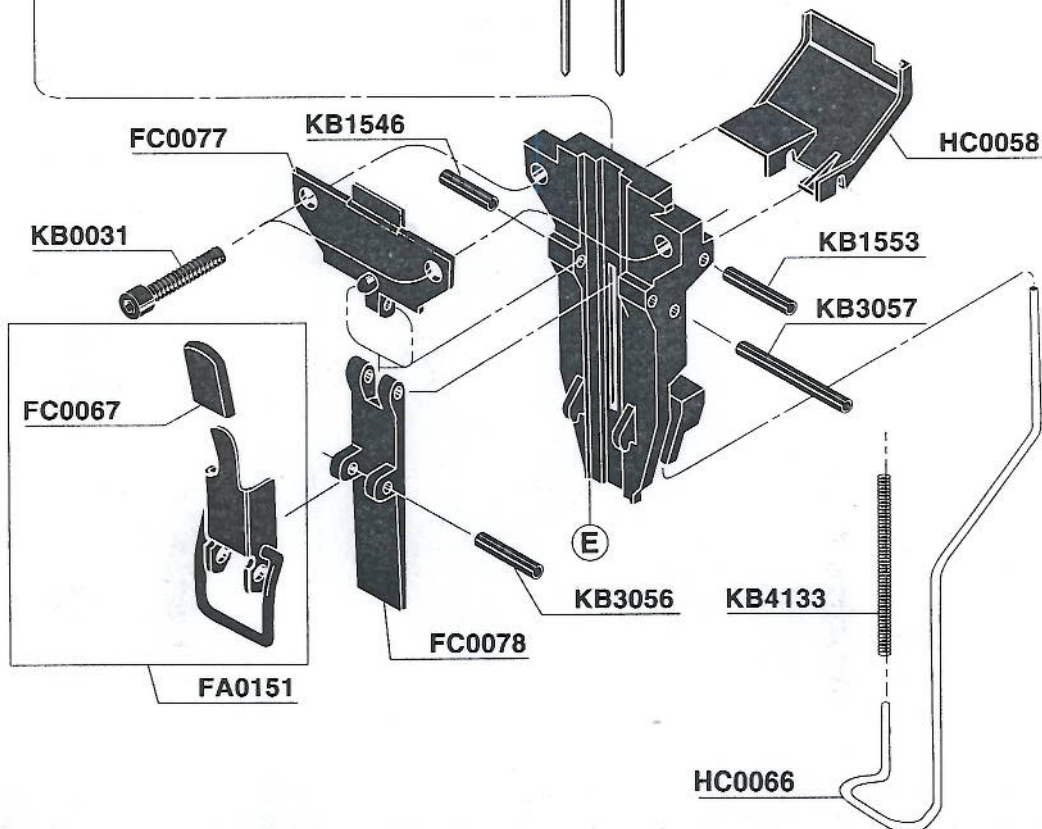
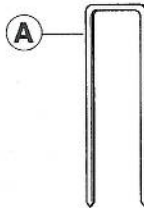


* Does not include O-Rings
* No incluye sellos de gomas
* Exklusiv Dichtringe
* Joints exclus

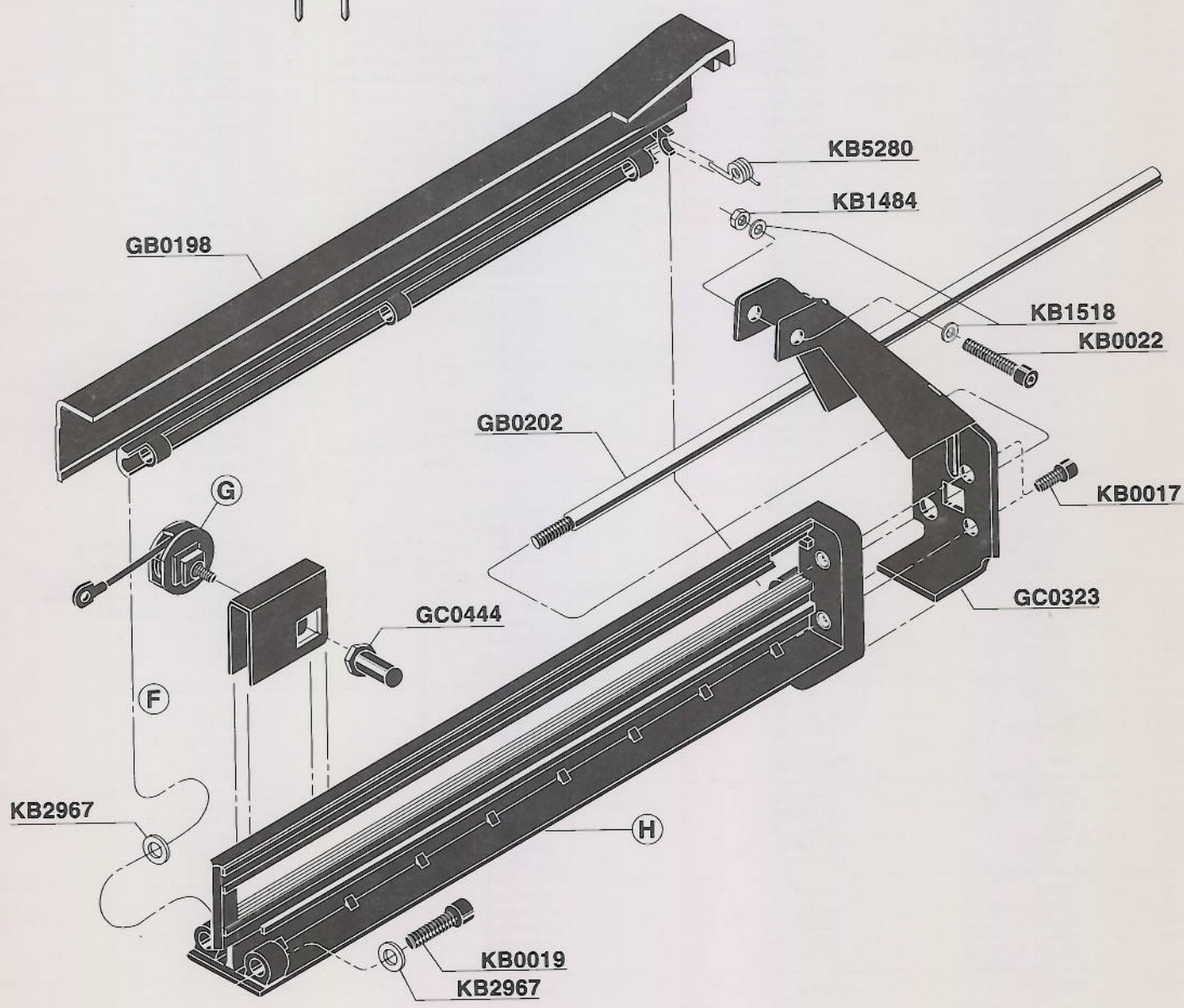
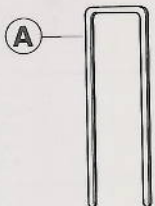
In the U.S.A., you will find your nearest Senco location listed in the Yellow Pages under "Staples" Or, you can call our toll-free Action-line: 1-800-543-4596



| MODEL | A | E |
|--------|---------|--------|
| 300004 | L11-L15 | FC0076 |
| 300020 | L12-L17 | FC0071 |
| 300052 | M12-M17 | FC0073 |
| 300084 | N12-N17 | FC0075 |



| MODEL | A | F | G | H |
|--------|---------|--------|--------|--------|
| 300004 | L11-L15 | GC0330 | GB0304 | GB0199 |
| 300020 | L12-L17 | GC0330 | GB0304 | GB0199 |
| 300052 | M12-M17 | GC0331 | GB0305 | GB0201 |
| 300084 | N12-N17 | GC0331 | GB0305 | GB0201 |



SKS STAPLER
REPLACEMENT PARTS LIST
LISTA DE PARTES DE REPUESTO•ERSATZTEILE-LISTE•LISTE DE PIÈCES DE RECHANGE

| PART NO. | DESCRIPTION | DESCRIPCIÓN | BESCHREIBUNG | DÉSIGNATION |
|--|---|--|--|--|
| AB0073 BA0096 BB0101 BB0092 BC0138 | MAIN BODY ASSEMBLY VALVE ASSEMBLY STOP DEFLECTOR MUFFLER | ASAMBLE DE CARCASA ASAMBLE DE VALVULA TOPE DEFLECTOR SILENCIADOR | GEHÄUSE-ZUSAMMENBAU VENTIL-ZUSAMMENBAU PUFFER ABWEISER DÄMPFER | CORPS D'ASSEMBLÉE VALVE D'ASSEMBLÉE ARRÊT DÉFLECTEUR SILENCIEUX |
| BC0198 BF0007 BF0013 BF0068 BF0069 | CYLINDER RETAINER SEAL SEAL (N) SEAL (M) | CILINDRO JUNTA TÓRICA SELLO SELLO (N) SELLO (M) | ZYLINDER SICHERUNGSRING DICHTUNG DICHTUNG (N) DICHTUNG (M) | CYLINDRE RETENUE JOINT JOINT (N) JOINT (M) |
| BF0070 BF0073 CA0074 EC0123 EC0135 | SEAL (L) SEAL VALVE ASSEMBLY BUMPER DRIVER, 3/16" CSK (M) | SELLO (L) SELLO ASAMBLE DE VALVULA AMORTIGUADOR PERCUSOR, 4.8mm Hundimiento (M) | DICHTUNG (L) DICHTUNG VENTIL-ZUSAMMENBAU PUFFER TREIBER, 4.8mm Überlänge (M) | JOINT (L) JOINT VALVE D'ASSEMBLÉE AMORTISSEUR COUTEAU, 4.8mm Noyer (M) |
| EC0136 EC0178 ED0003 ED0010 FA0151 | DRIVER, 3/16" CSK (N) DRIVER, 3/16" CSK (L) PISTON ASSEMBLY (N) PISTON ASSEMBLY (L&M) LATCH ASSY. | PERCUSOR, 4.8mm Hundimiento (N) PERCUSOR, 4.8mm Hundimiento (L) ASAMBLE DE PISTON (N) ASAMBLE DE PISTON (L&M) ASAMBLE DE UÑETA | TREIBER, 4.8mm Überlänge (N) TREIBER, 4.8mm Überlänge (L) KOLBEN-ZUSAMMENBAU (N) KOLBEN-ZUSAMMENBAU (L&M) VERSCHLUSS-ZUSAMMENBAU | COUTEAU, 4.8mm Noyer (N) COUTEAU, 4.8mm Noyer (L) PISTON D'ASSEMBLÉE (N) PISTON D'ASSEMBLÉE (L&M) DOIGT DE RETENUE |
| FC0067 FC0071 FC0072 FC0073 FC0074 | FINGER GRIP GUIDE BODY (L12-L17) GUIDE BODY (M10-M13) GUIDE BODY (M12-M17) GUIDE BODY (N10-N13) | AGARRADERO PLACA DE NARIZ (L12-L17) PLACA DE NARIZ (M10-M13) PLACA DE NARIZ (M12-M17) PLACA DE NARIZ (N10-N13) | FINGERGRIFF KLAMMERFÜHRUNG (L12-L17) KLAMMERFÜHRUNG (M10-M13) KLAMMERFÜHRUNG (M12-M17) KLAMMERFÜHRUNG (N10-N13) | GAINÉ EN CAOUTCHOUC FRONT (L12-L17) FRONT (M10-M13) FRONT (M12-M17) FRONT (N10-N13) |
| FC0075 FC0076 FC0077 FC0078 GB0198 | GUIDE BODY (N12-N17) GUIDE BODY (L11-L15) PLATE DOOR DOOR | PLACA DE NARIZ (N12-N17) PLACA DE NARIZ (L11-L15) PLACA PUERTA PUERTA | KLAMMERFÜHRUNG (N12-N17) KLAMMERFÜHRUNG (L11-L15) PLATTE ABDECKSCHIEBER ABDECKSCHIEBER | FRONT (N12-N17) FRONT (L11-L15) PLAQUE PORTE PORTE |
| GB0199 GB0201 GB0202 GB0304 GB0305 | RAIL (L) RAIL (M&N) PIVOT FEEDER ASSEMBLY (L) FEEDER ASSEMBLY (M&N) | CARRIL (L) CARRIL (M&N) PIVOTE ENSEMBLAJE DEL ALIMENTADOR (L) ENSEMBLAJE DEL ALIMENTADOR (M&N) | SCHIENE (L) SCHIENE (M&N) ACHSSTIFT ROLLFEDER (L) ROLLFEDER (M&N) | RAIL (L) RAIL (M&N) PIVOT RESSORT DE POUSSOIR (L) RESSORT DE POUSSOIR (M&N) |
| GC0323 GC0330 GC0331 GC0444 HC0052 | SUPPORT FEEDER SHOE (L) FEEDER SHOE (M&N) FEEDER SHOE HANDLE RETAINER | SUPORTE ALIMENTADOR (L) ALIMENTADOR (M&N) MANGO DE ALIMENTADOR JUNTA TÓRICA | TRÄGER KLAMMERSCHIEBER (L) KLAMMERSCHIEBER (M&N) KLAMMERSCHIEBER HANDGRIFF SICHERUNGSRING | SUPPORT POUSSOIR (L) POUSSOIR (M&N) POIGNÉE DE POUSSOIR RETENUE |
| HC0054 HC0058 HC0066 HD0015 HD0016 | BEARING COVER SAFETY TRIGGER ASSEMBLY TRIGGER ASSEMBLY (TRIGGER-FIRE) | CAPA DEL COJINETE CUBIERTA SEGURO ASAMBLE DE GATILLO ASAMBLE DE GATILLO (DISPARO DE GATILLO) | LAGER ABDECKUNG SICHERHEITSVORRICHTUNG AUSLÖSER-ZUSAMMENBAU AUSLÖSER-ZUSAMMENBAU (EINZELAUSLÖSUNG) | COUSSIN PORTE SÉCURITÉ GACHETTE D'ASSEMBLÉE GACHETTE D'ASSEMBLÉE (DÉCLENCHÉMENT PAR GACHETTE) |
| KA0001 KB0017 KB0019 KB0022 KB0031 | PIN ASSY. SCREW SCREW SCREW SCREW | ASAMBLE DE PASADOR TORNILLO TORNILLO TORNILLO TORNILLO | STIFT-ZUSAMMENBAU SCHRAUBE SCHRAUBE SCHRAUBE SCHRAUBE | FINNETTE D'ASSEMBLÉE VIS VIS VIS VIS |
| KB0032 KB1484 KB1518 KB1546 KB1553 | SCREW NUT WASHER PIN PIN | TORNILLO TUERCA ARANDELA PASADOR PASADOR | SCHRAUBE MUTTER SCHEIBE STIFT STIFT | VIS ÉCROU RONDELLE FINETTE FINETTE |
| KB2967 KB3056 KB3057 KB4133 KB5280 | WASHER PIN PIN SPRING SPRING | ARANDELA PASADOR PASADOR MUELLE MUELLE | SCHEIBE STIFT STIFT FEDER FEDER | RONDELLE FINETTE FINETTE RESSORT RESSORT |
| LB0012 LB0018 LB0030 LB5046 LB0777 | SEAL SEAL SEAL SEAL SEAL | SELLO SELLO SELLO SELLO SELLO | DICHTUNG DICHTUNG DICHTUNG DICHTUNG DICHTUNG | JOINT JOINT JOINT JOINT JOINT |
| LB0778 | SEAL | SELLO | DICHTUNG | JOINT |

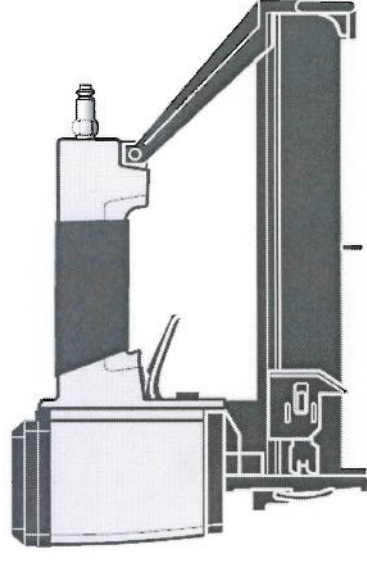
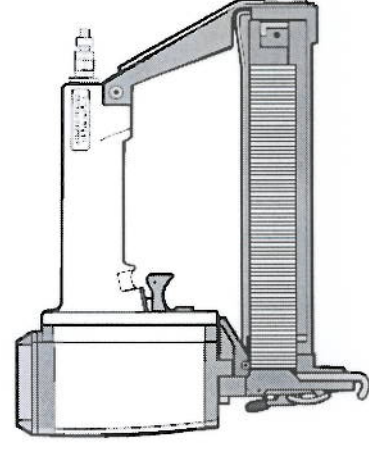
Cylinder Sleeve Design Changes

SENCO models: SFN1, SKS, SPS, SFN1+ and SKSXP

This document details changes made to the main cylinder sleeve of these popular SENC0 tool models.

For those performing service on these models, knowledge of these changes will help lead to a successful repair.

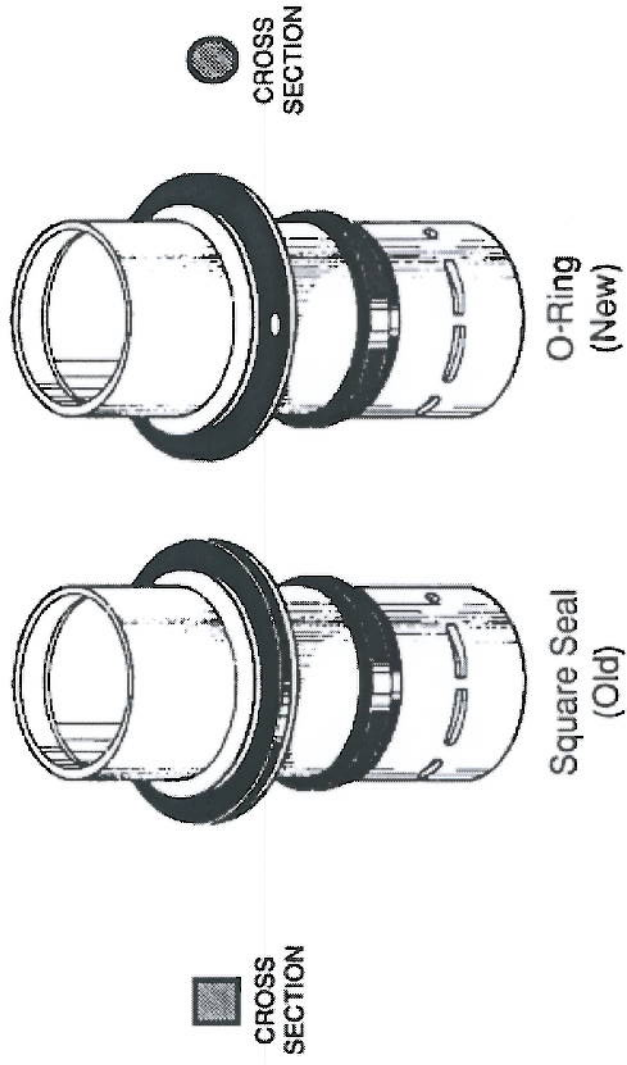
For tools with extensive wear, replacing the old sleeve with a new sleeve is strongly suggested. A new sleeve will offer better compression, increased driving power and improve the tool's ability to reset after each drive.



CHANGE IN 1989.....

SFNI CYLINDER SLEEVE SEAL PART NO. LB0777

The configuration of cylinder sleeve seal (LB0777) has been changed from a square-shaped seal to an o-ring. The change to an o-ring was made to improve serviceability, without changing the functional purpose of the seal. The part number does not change.

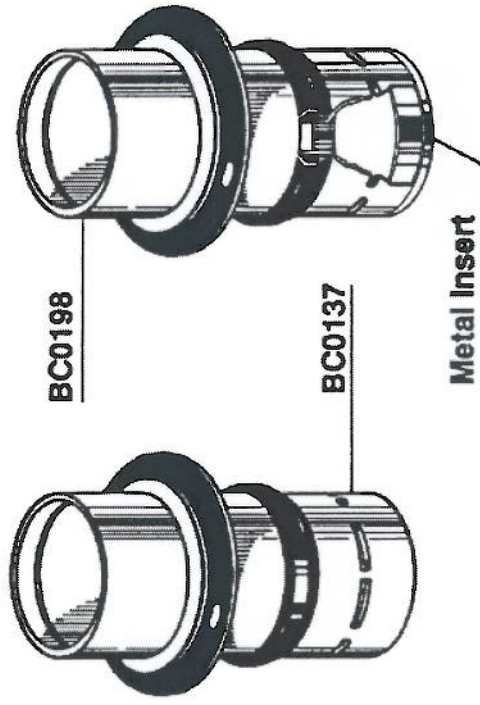


Parts are interchangeable. The new o-ring will be used in all tools beginning with the February tool build. All tools built prior to the February tool build have the square-shaped seal.

CHANGE IN 1990...

Subject: Cylinder Sleeve

The Cylinder Sleeve (BC0137) has been redesigned to include a metal wear insert at the bottom of the cylinder sleeve. In addition, the material used to make the cylinder sleeve has been changed to an improved compound. These changes will help prevent cylinder sleeve wear. The new cylinder sleeve (BC0198) includes the metal wear insert. Service parts (BC0198) will be packaged in a plastic bag and include special instructions concerning the metal insert (see below).



OLD STYLE

NEW STYLE

Document No.
BC0198
Ed. 7/10/90

SENCO
GENUINE PARTS

**Special Instructions:
Cylinder Sleeve Assembly**

SFN1 SKS SPS Tools

Metal Ring must remain inserted in bottom of Cylinder Sleeve during installation.

The cylinder sleeves are interchangeable. Tools built beginning in September 1990 will have the new cylinder sleeve (BC0198)

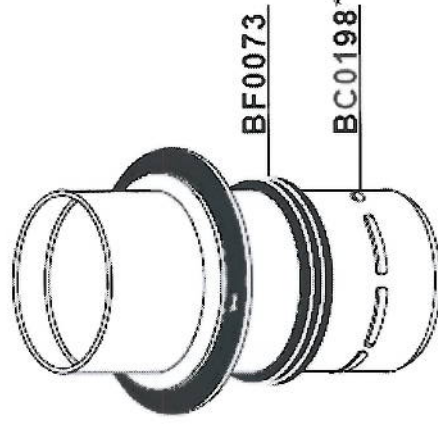
CHANGE IN 1994...

Subject: Cylinder Sleeve

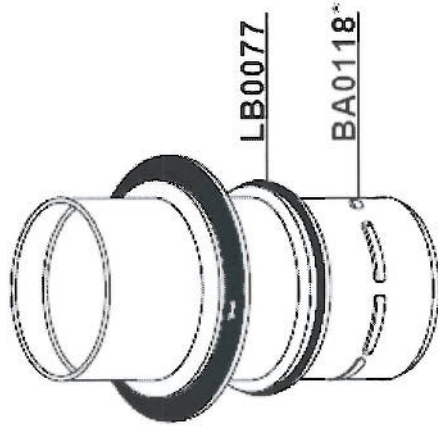
The Cylinder Sleeve (BC0198) has been redesigned to increase the life of the part and reduce skipping by improving Piston/Driver assembly return. The new Cylinder Sleeve (BA0118) is made from a different material and has an O-ring Return Seal (LB0077) instead of the wide Return Seal (BF0073) used on the old style Cylinder Sleeve (BC0198).

Important side note:

The old BF0073 washer tends to break after 15-20 years of age. As of 2011, it was still available as a service part but, it is not in the YK0376 service kit for these tools. If you use the YK0376 service kit on a pre-1994 tool, you should also buy the BF0073 seal, or the new sleeve – BC0232.



OLD



NEW

* Seals not included

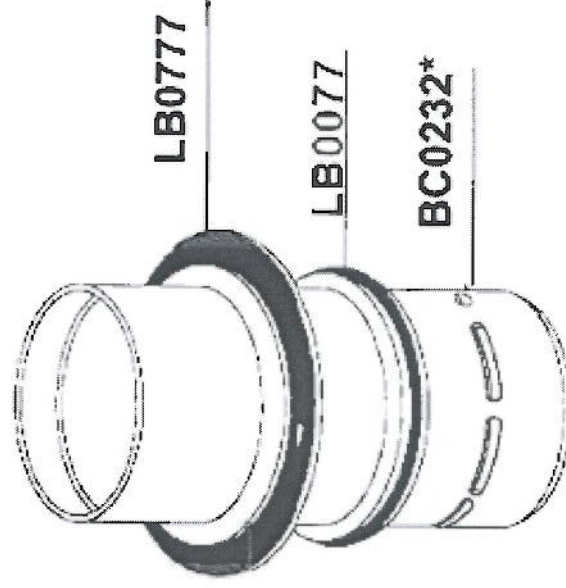
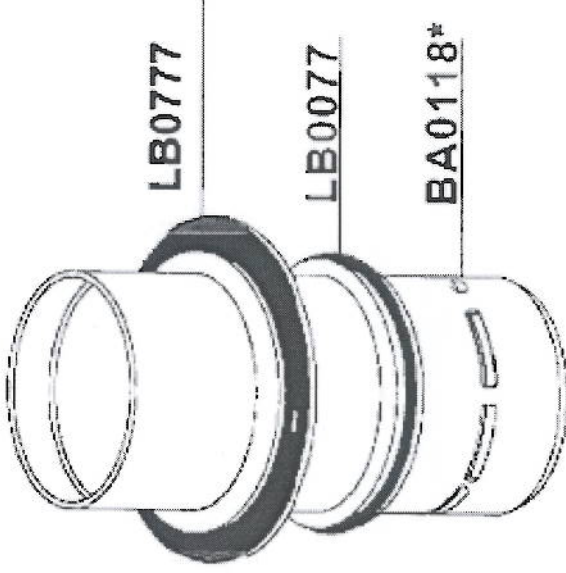
The Cylinder Sleeves are interchangeable provided the BF0073 seal is used with the old style Cylinder Sleeve (BC0198) and the new O-ring Return Seal (LB0077) is used with the new style Cylinder Sleeve (BA0118).

Tools built beginning in May 1994 will have the new Cylinder Sleeve (BA0118) and O-ring Return Seal (LB0077).

CHANGE IN 2010...

Subject: Cylinder sleeve change from plastic to aluminum

In an effort to maintain consistent quality, the cylinder sleeve is changing from the original plastic material to aluminum. The new sleeve, the BC0232, will use the same seals as the old BA0118 sleeve. The SFN1 and the SFN1+ models are no-oil tools regardless of the change. The new sleeve can be used in all SFN1 and SFN1+ models as a replacement part.



**DOES NOT INCLUDE SEALS*

OLD

NEW