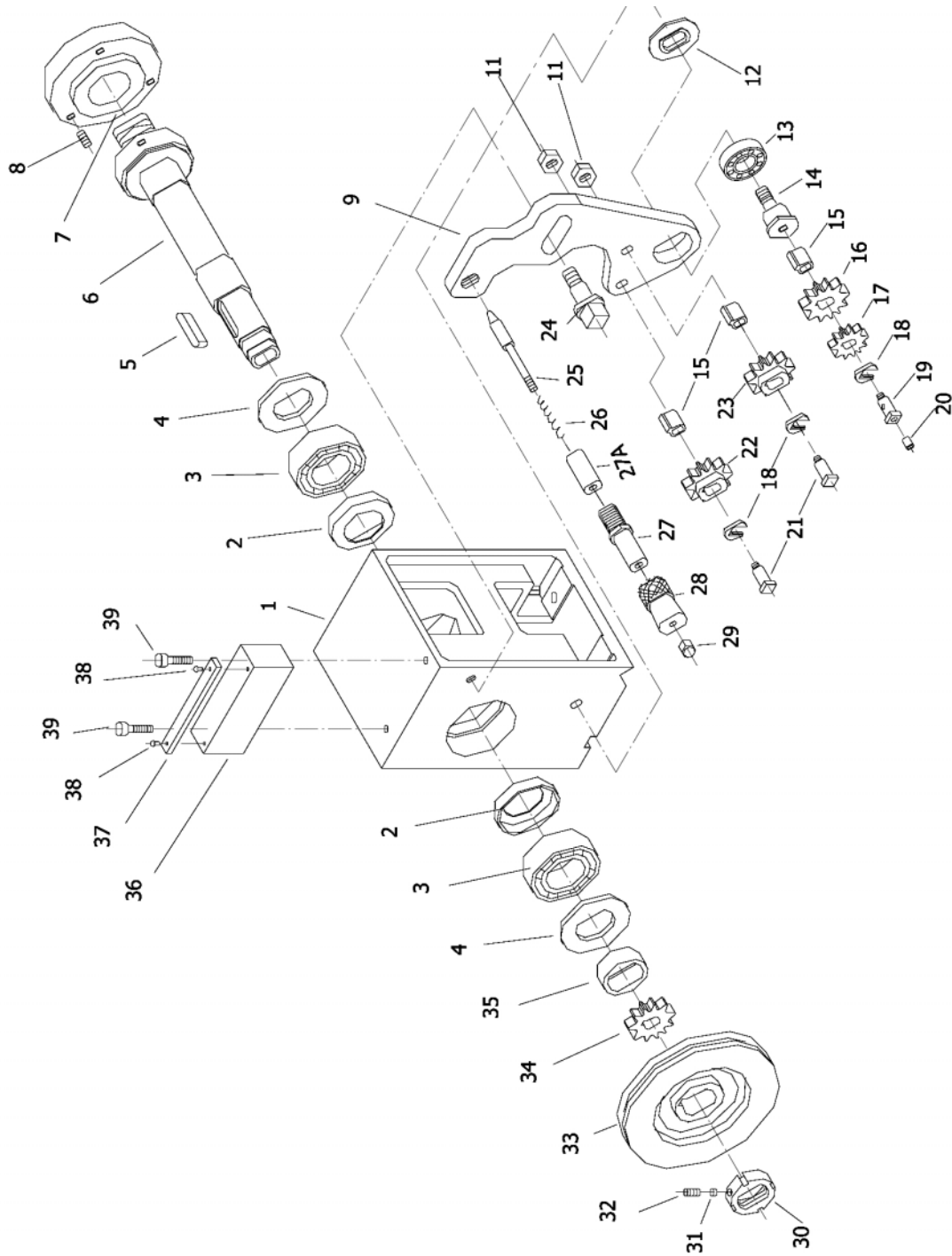


Replacement Parts

Replacement parts are listed on the following pages. To order parts or reach our service department, call 1-800-274-6848, Monday through Friday (see our website for business hours, www.waltermeier.com). Having the Model Number and Serial Number of your machine available when you call will allow us to serve you quickly and accurately.

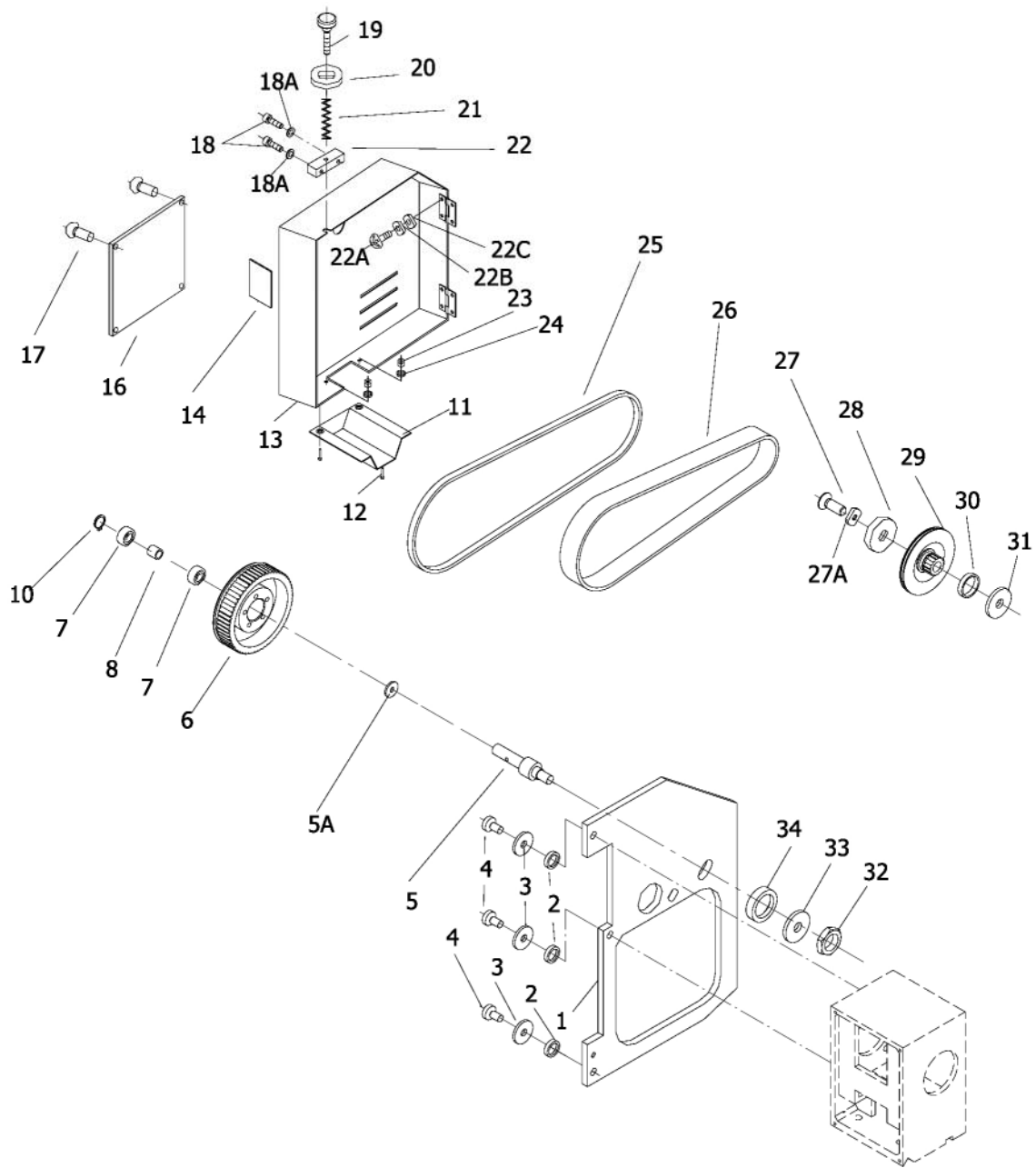
Headstock Assembly – Exploded View



Headstock Assembly – Parts List

Index No.	Part No.	Description	Size	Qty
1	BD920N-1002	Headstock Casting		1
2	1003	Cover		2
3	32007	Ball Bearing		2
4	1005	Gasket		2
5	BD920W-2008	Key	8x5x38mm	1
6	BD920W-2106	Spindle		1
7	2107/1	Flange Joint		1
8	TS-1523031	Set Screw	M6x10	1
9	2133	Bracket		1
11	GB6170-85	Hex Nut	M6	2
12	2127	Collar		1
13	61904	Ball Bearing	6904Z	1
14	2126/1	Shaft		1
15	BD920W-1112	Bushing		3
16	1018	Gear	40T	1
17	2027	Gear	32T	1
18	1013	Washer		3
19	2126/2	Shaft		1
20	BD920N-009	Oil Port	6mm	1
21	2128	Shaft		2
22	BD920W-1110	Gear	35T	1
23	BD920W-1111	Gear	46T	1
24	BD920W-2130	Screw		1
25	3004	Plunger		1
26	3005	Spring		1
27	3003	Bushing		1
27A	3003A	Spacer		1
28	3006	Handle		1
29	GB923-88	Cap Nut		1
30	1012	Round Nut	M28x1	1
32	GB77-85	Set Screw	M5x6	1
33	1008	Pulley		1
34	1011	Gear	40T	1
35	1007	Spacer		1
36	BD920W-1114	Bracket		1
37	BD920W-1115	Threading Direction Plate		1
38	GB818-85	Pan Head Screw	M3x5	4
39	TS-1503091	Hex Socket Cap Screw	M6x40	2

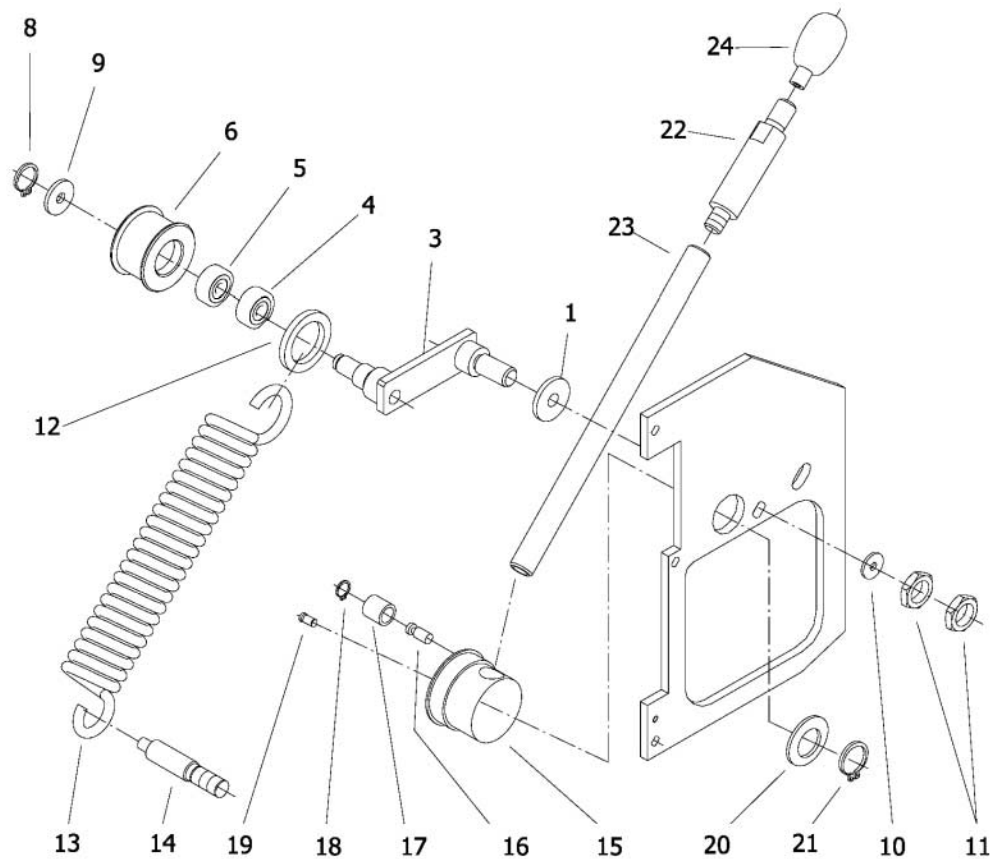
Drive Assembly – Exploded View



Drive Assembly – Parts List

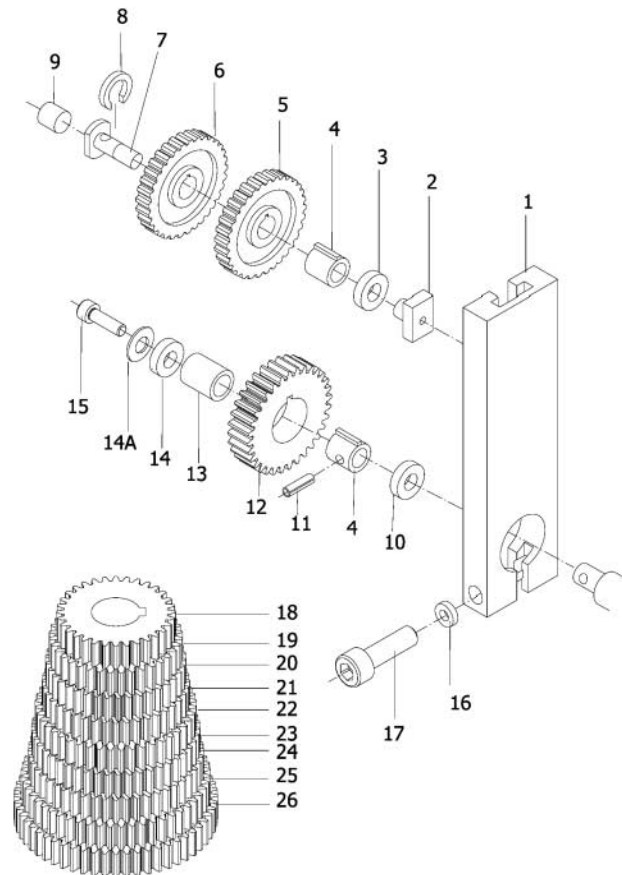
Index No.	Part No.	Description	Size	Qty
.....	BD920N-3J.B.S.	4-inch 3-Jaw Chuck (not shown)		1
.....	BD920N-CJ3	Chuck Jaw Set (set of 3; not shown)		1
.....	BD920N-ST	Spanner Tool for Chuck (not shown)		1
.....	FJ1001	4-Jaw Chuck 1-1/2" x 7 (not shown)		1
.....	FJ1002	1-1/2" x 8 Backplate (not shown)		1
.....	FJ1003	Face Plate 1-1/2" x 8 (not shown)		1
.....	FJ1004	Spindle with 1-1/2" x 8 TPI (not shown)		1
.....	BD920N-FCK	Female Chuck Key (not shown)		1
.....	BD920N-MCK	Male Chuck Key (not shown)		2
1.....	BD920W-0006	Bracket		1
2.....	TS-1550061	Flat Washer	8mm	3
3.....	TS-1551061	Lock Washer	8mm	3
4.....	TS-1504041	Hex Socket Cap Screw	M8x20	3
5.....	2113	Shaft		1
5A.....	1028	Washer		1
6.....	2112	Pulley		1
7.....	6001RS	Ball Bearing	6001RS	2
8.....	2114	Spacer		1
10.....	GB894-76	Snap Ring	12mm	1
11.....	2110/1	Cover		1
12.....	TS-1533032	Pan Head Screw	M5x10	2
13.....	BD920W-0007	Cover		1
14.....	2104A	Label – Thread Dial		1
15.....	BD920W-1108	Machine Label (not shown)		1
16.....	BD920W-2105	Threading Chart Plate		1
17.....	TS-1531012	Phillips Pan Head Machine Screw	M3x4	4
18.....	TS-1503051	Hex Socket Cap Screw	M6x20	2
18A.....	TS-1550041	Washer	6mm	2
19.....	TS-1503061	Hex Socket Cap Screw	M6x25	1
20.....	TS-2361061	Lock Washer	6mm	1
21.....	BD920W-2003	Spring		1
22.....	BD920W-2004	Bracket		1
22A.....	TS-1503011	Socket Head Cap Screw	M6x8	4
22B.....	TS-2361061	Lock Washer	6mm	4
22C.....	TS-1550041	Washer	6mm	4
23.....	TS-1540031	Hex Nut	M5	2
24.....	TS-1550031	Washer	5mm	4
25.....	VB-5M710	V-Belt		1
26.....	VB-170xL050	Cog Belt		1
27.....	GB818-85	Screw	M6x10	1
27A.....	GB971-85	Lock Washer	6mm	1
28.....	BD920W-4033	Washer	6mm	1
29.....	BD920W-1012	Pulley		1
30.....	BD920W-1013	Collar		1
31.....	BD920W-1014	Washer		1
32.....	TS-1540071	Hex Nut	M10	1
33.....	TS-2361101	Lock Washer	10mm	1
34.....	2041/1	Washer	10mm	1
35.....	BD920N-NOTE	Label – Note: Avoid Breaking (not shown)		1

Tension Roller Assembly – Exploded View & Parts List



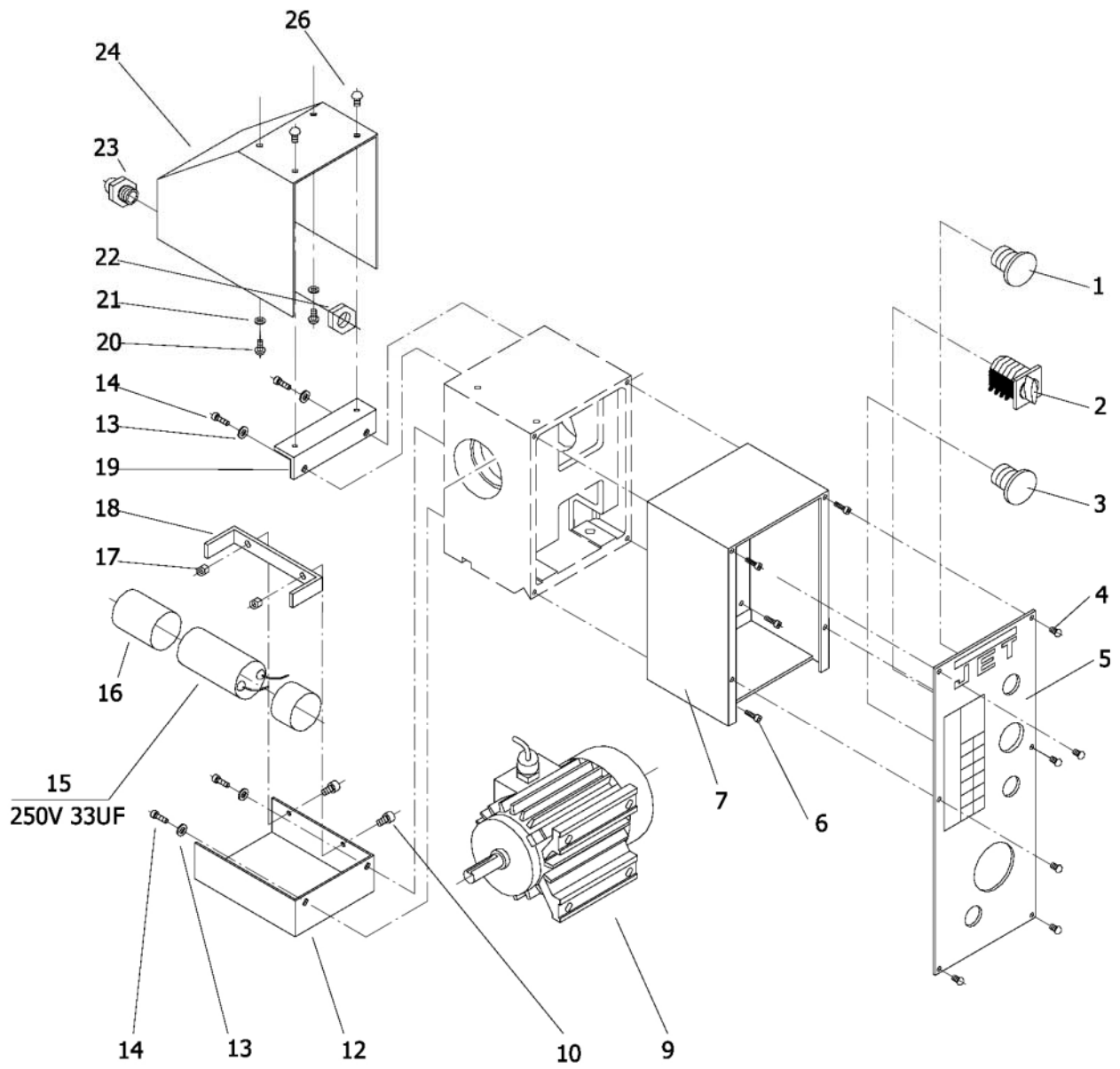
Index No.	Part No.	Description	Size	Qty
1.....	1040N.....	Washer.....	16mm.....	1
3.....	1035A.....	Swing Arm.....		1
4.....	BD920N-TR05.....	Ball Bearing.....	6001RS.....	1
5.....	BD920N-TR05.....	Ball Bearing.....	6001RS.....	1
6.....	1039.....	Roller.....		1
8.....	BD920N-TR08.....	Snap Ring.....	12mm.....	1
9.....	1038.....	Washer.....	28mm.....	1
10.....	TS-1550071.....	Washer.....	10mm.....	1
11.....	TS-1540071.....	Nut.....	M10.....	2
12.....	1036.....	Washer.....		1
13.....	1037.....	Spring.....		1
14.....	1050.....	Stud Bolt.....		1
15.....	1032.....	Toggle.....		1
16.....	1051.....	Pin.....		1
17.....	1033.....	Sleeve.....		1
18.....	BD920N-TR18.....	Snap Ring.....	6mm.....	1
19.....	TS-1524011.....	Set Screw.....	M8x8.....	1
20.....	1034.....	Wave Washer.....		1
21.....	BD920N-TR21.....	Snap Ring.....	35mm.....	1
22.....	1042.....	Lever.....		1
23.....	1043.....	Lever.....		1
24.....	1044A.....	Knob.....		1

Quadrant Assembly – Exploded View & Parts List



Index No.	Part No.	Description	Size	Qty
1.....	2003A	Bracket		1
2.....	2004	T-Nut		1
3.....	TS-1550041	Washer		1
4.....	2009	Bushing.....		2
5.....	BD920N-2001.....	Gear	127T	1
6.....	BD920N-2002.....	Gear	120T	1
7.....	BD920N-2005.....	Shaft.....		1
8.....	BD920N-2006.....	Washer		1
9.....	BD920N-Q09.....	Oil Port	6mm	1
10.....	TS-1550071	Washer	10mm	1
11.....	BD920N-Q11	Spring Pin	3x12mm.....	1
12.....	2071	Gear	60T	1
13.....	2008	Spacing Ring.....		1
14.....	TS-1550041	Washer	6mm	1
14A.....	TS-1551041	Lock Washer	6mm	1
15.....	TS-1503031	Hex Socket Cap Screw	M6x12	1
16.....	TS-1551041	Lock Washer	6mm	1
17.....	TS-1503091	Hex Socket Cap Screw	M6x40.....	1
18.....	2070	Gear	32T	1
19.....	2011	Gear	36T	1
20.....	BD920W-2020	Gear	38T	1
21.....	2072	Gear	40T	1
22.....	2073	Gear	44T	1
23.....	2074	Gear	46T	1
24.....	2075	Gear	48T	1
25.....	2076	Gear	52T	1
26.....	BD920W-2014	Gear	56T	1

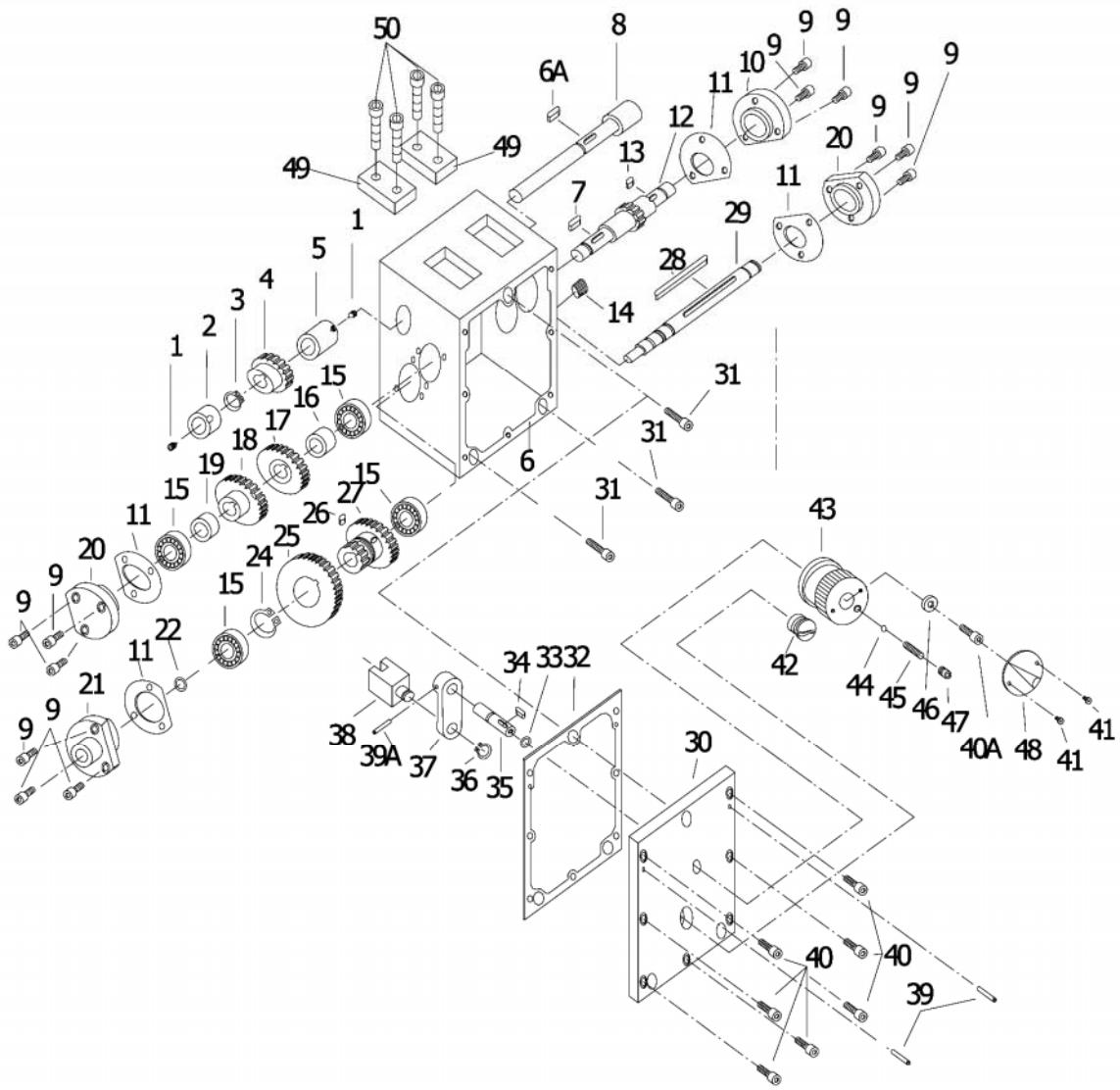
Electrical Assembly – Exploded View



Electrical Assembly – Parts List

Index No.	Part No.	Description	Size	Qty
1	BD920N-E20	EMG Switch		1
2	BD920N-E21	Switch		1
3	BD920N-E22	Indicator Light		1
4	TS-1531012	Phillips Pan Head Machine Screw	M3x5	6
5	BD920W-02001	Plate		1
6	BD920N-E10	Hex Screw	M5x10	4
7	BD920W-1116	Electrical Control Box		1
9	BD920N-E11	Motor	3/4HP, 115V, 60Hz	1
	BD920N-E11-1	Motor Junction Box Cover		1
	BD920N-MOTORFAN	Motor Fan (not shown)		1
10	TS-1502021	Socket Head Cap Screw	M5x10	2
12	BD920W-1104	Housing		1
13	TS-2361061	Lock Washer	6mm	4
14	TS-1503031	Screw	M6x12	4
15	BD920N-E06	Condenser		1
16	BD920N-E05	Condenser Clip		1
17	TS-1540031	Nut	M5	2
18	BD920N-E16	Capacitor Support		1
19	1103	Bracket		1
20	TS-1533032	Phillips Pan Head Machine Screw	M5x10	2
21	TS-2361051	Lock Washer	5mm	2
22	BD920N-E07	Lock Nut		1
23	BD920N-E08	Screw Coupling		1
24	BD920W-1105	Housing		1
26	GB818-85	Hex Screw	M5x6	4
	3TF31	Contactora (not shown)		1

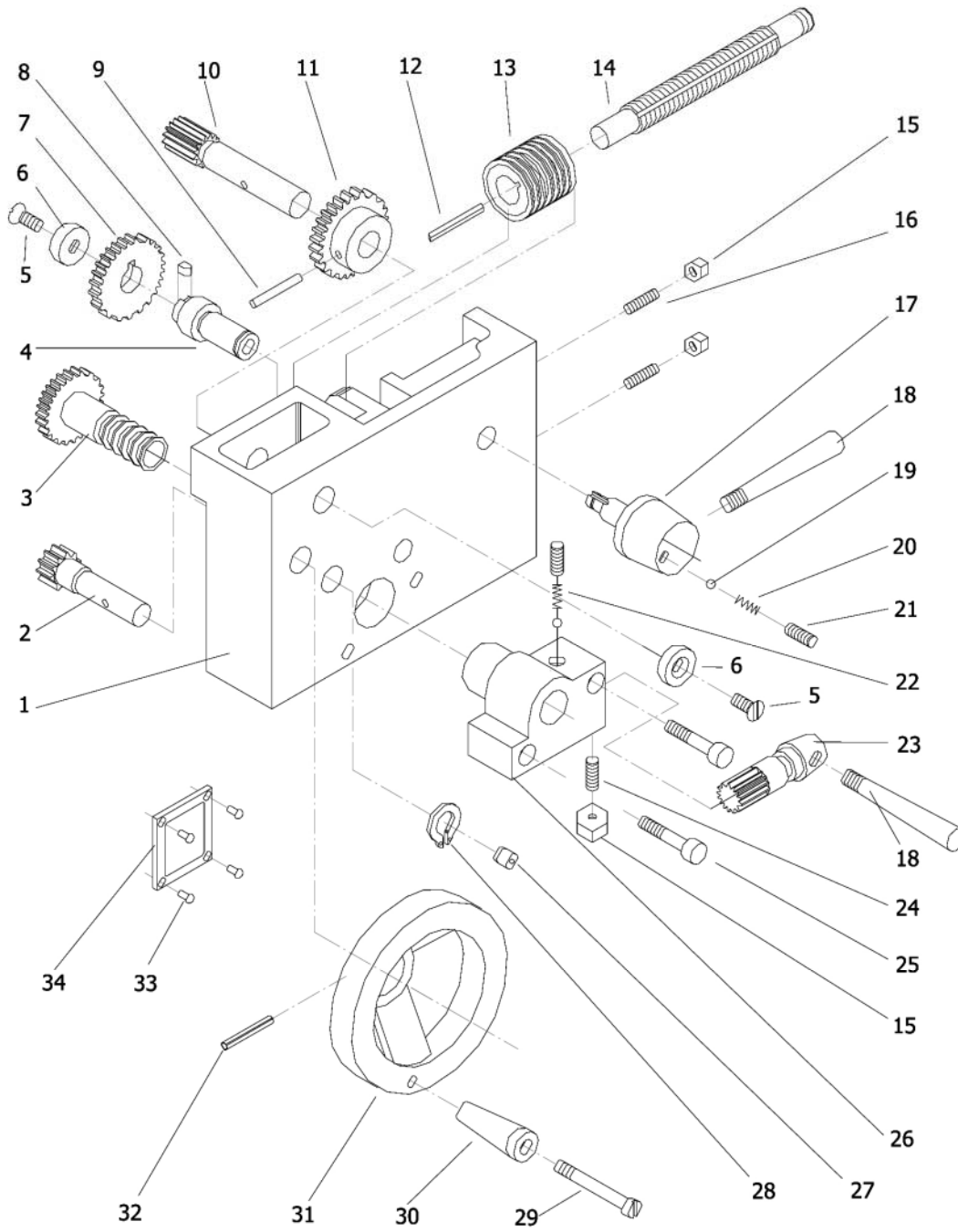
Gear Box Assembly – Exploded View



Gear Box Assembly – Parts List

Index No.	Part No.	Description	Size	Qty
1	TS-1522011	Set Screw	M5x6	1
2	BD920N-GB02	Bushing		1
3	BD920N-GB15	Snap Ring	16mm	1
4	CQ6123B-3114	Gear	27T	1
5	CQ6123B-3115	Bushing		1
6	CQ6123B-3101	Gear Box Casting		1
6A	CQ6123B-3101A	Key	5x8mm	1
7	BD920N-GB07	Key	5x16mm	1
8	CQ6123B-3113	Shaft		1
9	TS-1503021	Socket Head Cap Screw	M6x10	12
10	CQ6123B-3122	Cover		1
11	CQ6123B-3110	Gasket		4
12	CQ6123B-3108	Gear Shaft Assembly	18T	1
13	BD920N-GB13	Key	5x10mm	1
14	BD920N-05-75	Oil Plug		1
15	BB-6202ZZ	Ball Bearing	6202ZZ	4
16	CQ6123B-3123	Bushing		1
17	CQ6123B-3124	Gear	27T	1
18	CQ6123B-3111	Gear	36T	1
19	CQ6123B-3109	Bushing		1
20	CQ6123B-3107	Cover		2
21	CQ6123B-3105	Cover		1
22	BD920N-GB22	O-Ring	10x1.8mm	1
24	BD920W-GB24	Snap Ring	30mm	1
25	CQ6123B-3103	Gear	36T	1
26	CQ6123B-3101A	Key	5x8mm	1
27	CQ6123B-3102	Gear	18T, 27T	1
28	CQ6123B-3104	Key	5x68mm	1
29	CQ6123B-3106	Shaft		1
30	CQ6123B-3118	Cover		1
31	TS-1504041	Socket Head Cap Screw	M8x20	3
32	CQ6123B-3117	Gasket		1
33	GB3452.1-82	O-Ring	8.75x1.8mm	1
34	BD920W-79	Key	4x12mm	1
35	CQ6123B-3116	Shaft		1
36	BD920N-TR08	Snap Ring	12mm	1
37	CQ6123B-3119	Shift Lever		1
38	CQ6123B-3120	Shift Fork		1
39	BD920N-GB39	Spring Pin	4x20mm	2
39A	BD920N-GB39A	Spring Pin	5x25mm	1
40	BD920N-GB40	Socket Head Cap Screw	M5x14	7
40A	TS-1503031	Socket Head Cap Screw	M6x12	1
41	TS-1531012	Pan Head Machine Screw	M3x6	2
42	BD920N-GB42	Oil Sight Glass		1
43	BD920N-05-09	Knob		1
44	SB-6MM	Steel Ball	6mm	1
45	GB2089-80	Spring	1x6x28mm	1
46	BD920N-05-08	Washer		1
47	TS-1524011	Set Screw	M8x8	1
48	BD920N-05-70	Plate		1
49	BD920W-0301	Cover		2
50	BD920W-S1	Flat Head Screw	M5x8	8

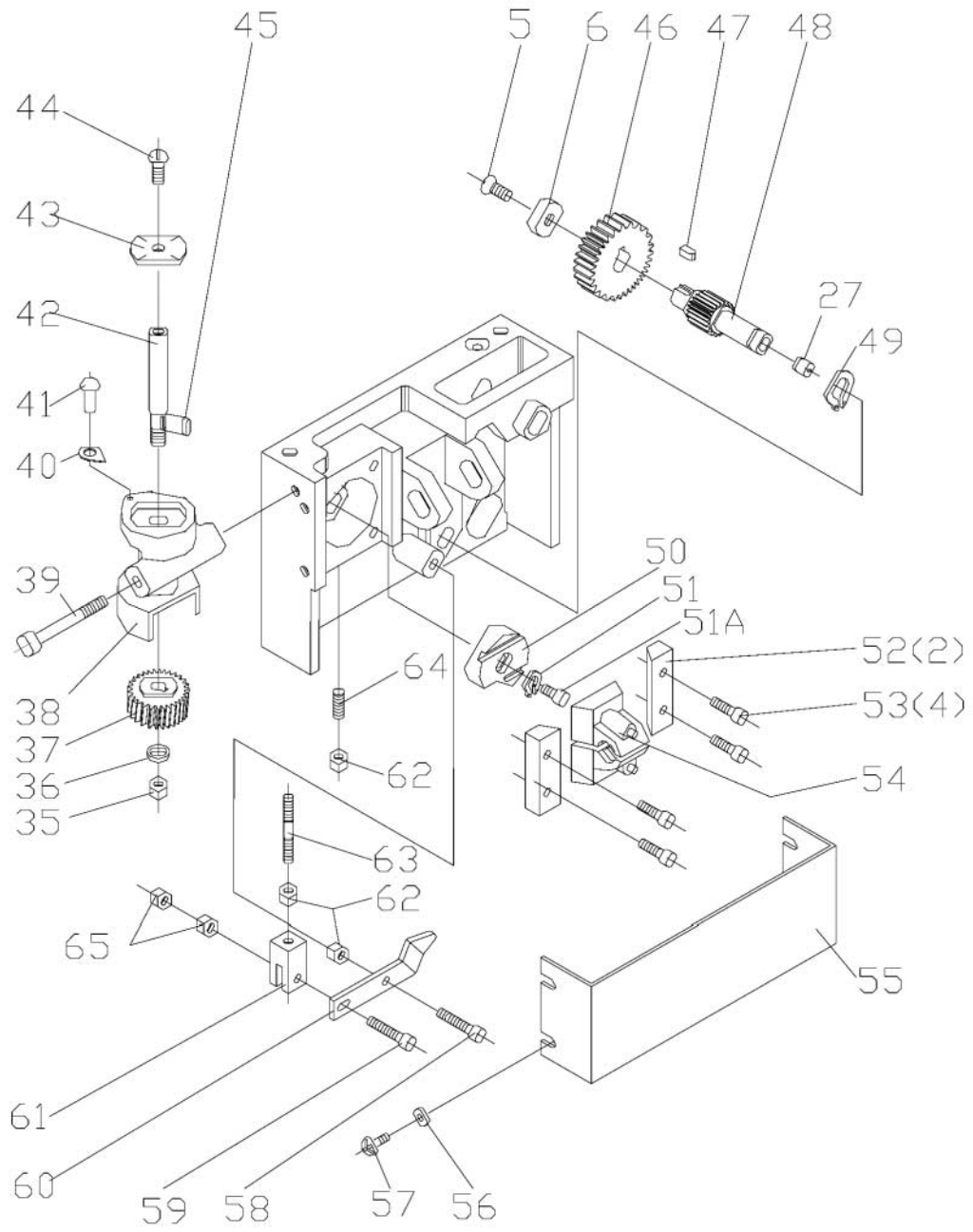
Apron Assembly – Exploded View



Apron Assembly – Parts List

Index No.	Part No.	Description	Size	Qty
1	4006	Apron Casting		1
2	4004	Gear	17T	1
3	4011	Gear	36T	1
4	4009	Shaft		1
5	BD920N-A14	Flat Head Screw	M6x8	3
6	4005	Washer		3
7	4010	Gear	41T	1
8	BD920N-A26	Key	4x6mm	1
9	BD920N-A16	Spring Pin	4x30mm	1
10	4008	Gear	12T	1
11	4007	Gear	43T	1
12	BD920W-4012	Key	3x28mm	1
13	4033	Worm		1
14	7003	Feed Screw	16TPI	1
15	TS-1540021	Nut	M4	2
16	TS-1521051	Set Screw	M4x12	2
17	BD920W-0002	Shaft		1
18	4015A	Handle		2
19	BD920N-A09	Steel Ball	4.5mm	2
20	4021	Spring		1
21	TS-1523011	Set Screw	M6x6	2
22	4025	Spring		1
23	4014	Gear	13T	1
24	TS-1521041	Set Screw	M4x10	1
25	TS-1503071	Socket Head Cap Screw	M6x30	2
26	4013	Bracket		1
27	BD920N-A29	Oil Port	6mm	2
28	BD920N-A28	Snap Ring	14mm	1
29	BD920N-4002	Screw		1
30	4001	Handle		1
31	4003	Hand Wheel		1
32	BD920N-A32	Spring Pin	4x25mm	1
33	BD920N-A36	Rivet	2x3mm	4
34	4018	Label: Half-Nut Lever		1

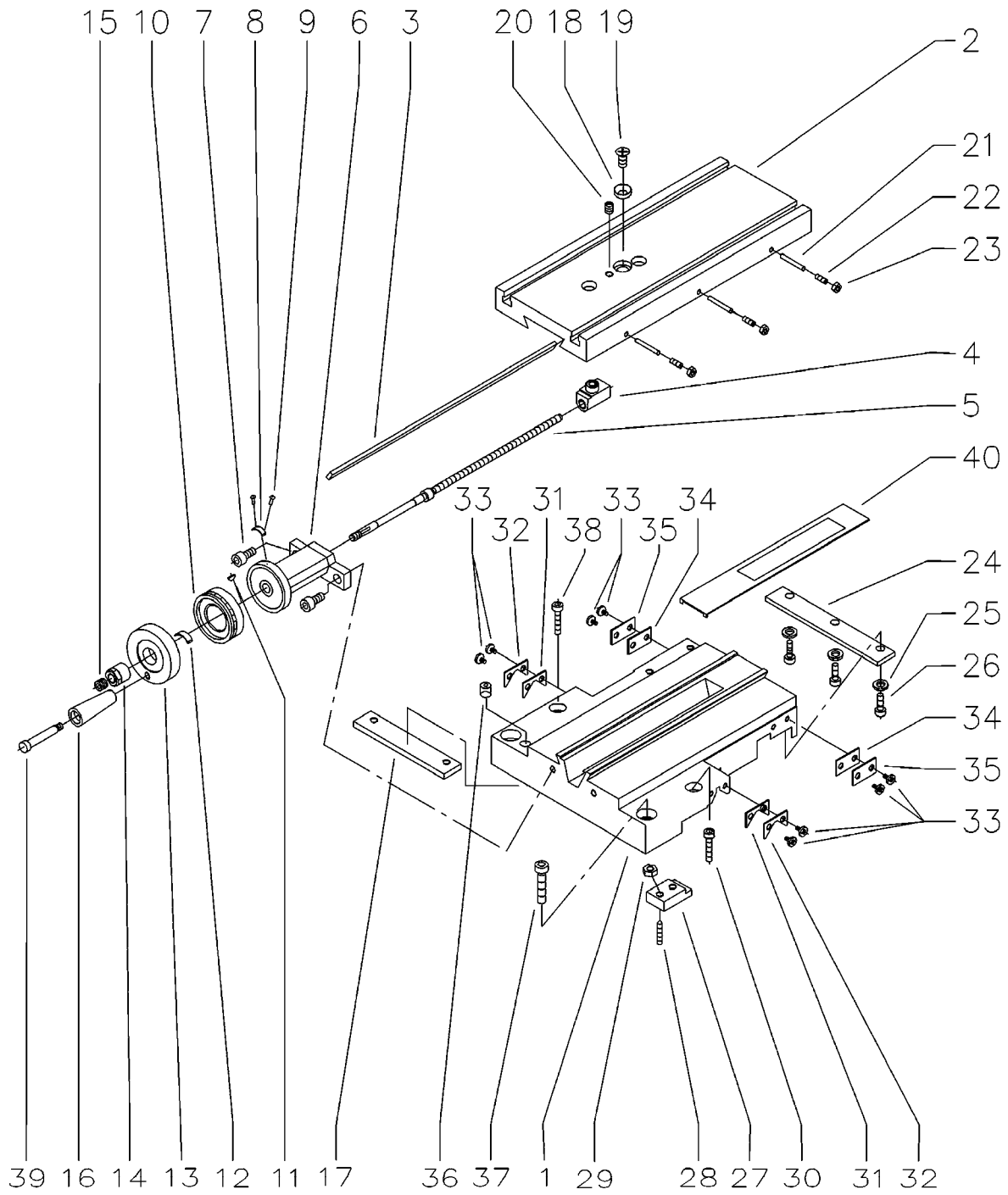
Apron Assembly (continued) – Exploded View



Apron Assembly (continued) – Parts List

Index No.	Part No.	Description	Size	Qty
35	TS-1540061	Hex Nut	M8	1
36	TS-1550061	Washer	8mm	1
37	4029	Worm Gear	64T	1
38	4036	Thread Dial Body		1
39	TS-1503131	Socket Head Cap Screw	M6x60	1
40	4024	Pointer		1
41	BD920N-A62	Rivet	2x3mm	1
42	4028	Shaft		1
43	4027	Dial		1
44	TS-1503011	Socket Head Cap Screw	M6x8	1
45	BD920N-A56	Key	3x8mm	1
46	4012	Worm Gear	42T	1
47	BD920N-A38	Key	4x10mm	1
48	4016	Gear	18T	1
49	BD920N-A40	Ring	12mm	1
50	4019	Locking Cam		1
51	BD920N-A44	Ring	4mm	1
51A	TS-1501011	Socket Head Cap Screw	M4x6	1
52	4020	Guide		2
53	TS-1501051	Hex Socket Cap Screw	M4x16	4
54	4017	Half Nut		1
55	4023	Apron Cover		1
56	TS-1550021	Washer	4mm	4
57	TS-1532021	Pan Head Machine Screw	M4x6	4
58	TS-1502041	Socket Head Cap Screw	M5x16	1
59	TS-1501061	Socket Head Cap Screw	M4x20	1
60	4032	Joint Plate		1
61	4030	Control Block		1
62	TS-1540031	Hex Nut	M5	3
63	4031	Screw	M5x40	1
64	BD920N-A46	Set Screw	M5x25	1
65	TS-1540021	Hex Nut	M4	2

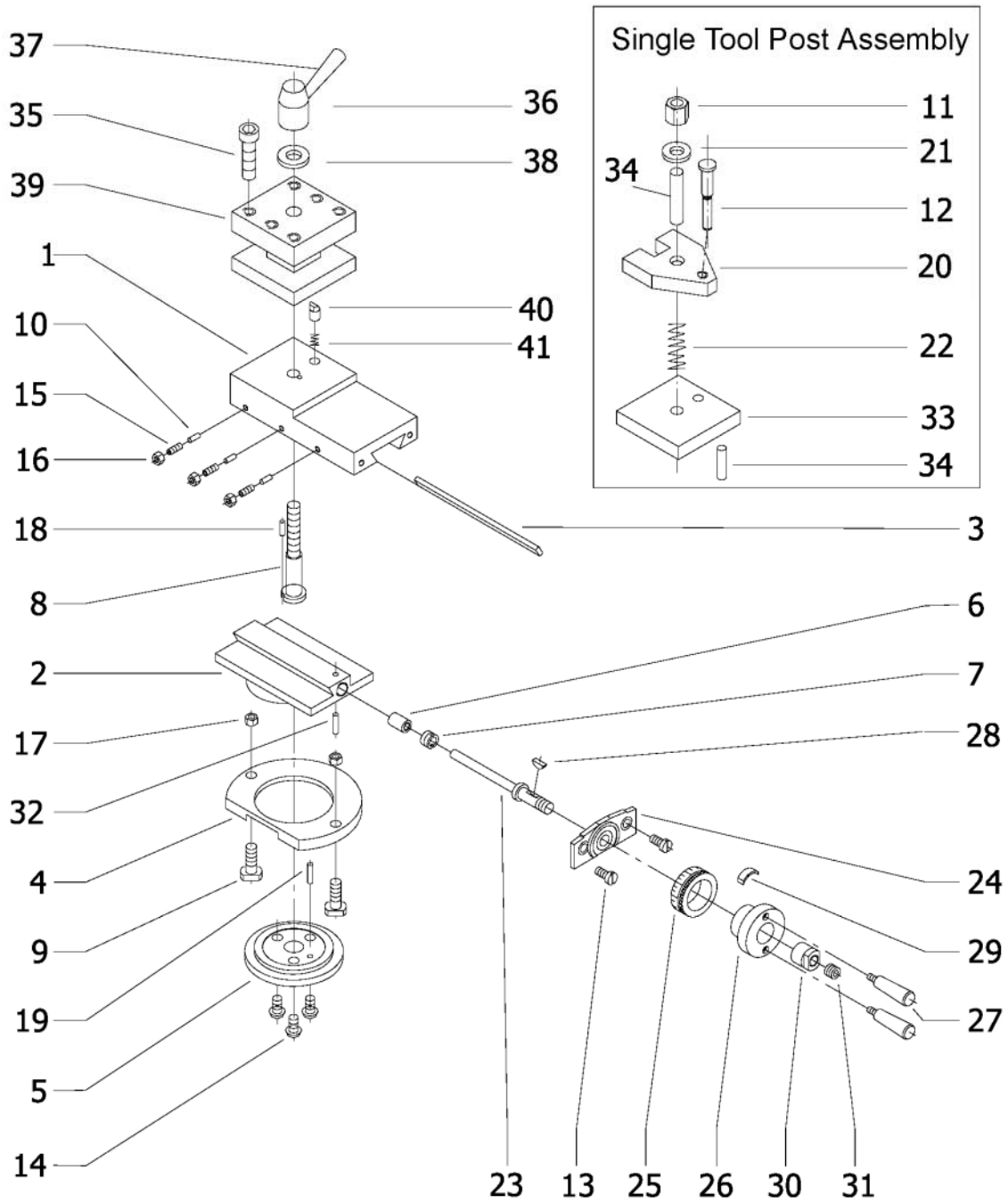
Saddle and Cross Slide – Exploded View



Saddle and Cross Slide Assembly – Parts List

Index No.	Part No.	Description	Size	Qty
1	5005	Saddle		1
2	5006	Cross Slide		1
3	5002	Gib		1
4	5036	Nut		1
5	5018	Lead Screw		1
6	5019	Bracket		1
7	TS-1503041	Socket Head Cap Screw	M6x16	2
8	5026	Plate		1
9	BD920N-CS09	Rivet	1.5x3mm	2
10	5020	Graduated Ring		1
11	BD920N-CS11	Key	3x10mm	1
12	5023	Spring		1
13	5021	Hand Wheel		1
14	5022	Hex Nut		1
15	BD920N-CS15	Set Screw	M8x6	1
16	5025	Handle		1
17	5003	Slide Block		1
18	5037	Bushing		1
19	BD920N-A14	Flat Head Screw	M6x8	1
20	TS-1523021	Set Screw	M6x8	1
21	5001	Pin		3
22	TS-1521041	Set Screw	M4x10	3
23	TS-1540021	Nut	M4	3
24	5016	Slide Block		1
25	TS-1550041	Washer	M6	3
26	TS-1503041	Socket Head Cap Screw	M6x16	3
27	5017	Clip		1
28	TS-1523061	Set Screw	M6x20	1
29	TS-1540041	Nut	M6	1
30	TS-1503061	Socket Head Cap Screw	M6x25	1
31	5042	Way Cover		2
32	5041	Cover Mount		2
33	TS-1432012	Pan Head Screw	M4x8	8
34	5040	Way Cover		2
35	5039	Cover Mount		2
36	BD920N-CS36	Oil Port	8mm	1
37	TS-1504061	Socket Head Cap Screw	M8x30	2
38	TS-1503061	Socket Head Cap Screw	M6x30	1
39	5024	Handle Screw		1
40	5038	Cover Mount		1

Top Slide Assembly – Exploded View



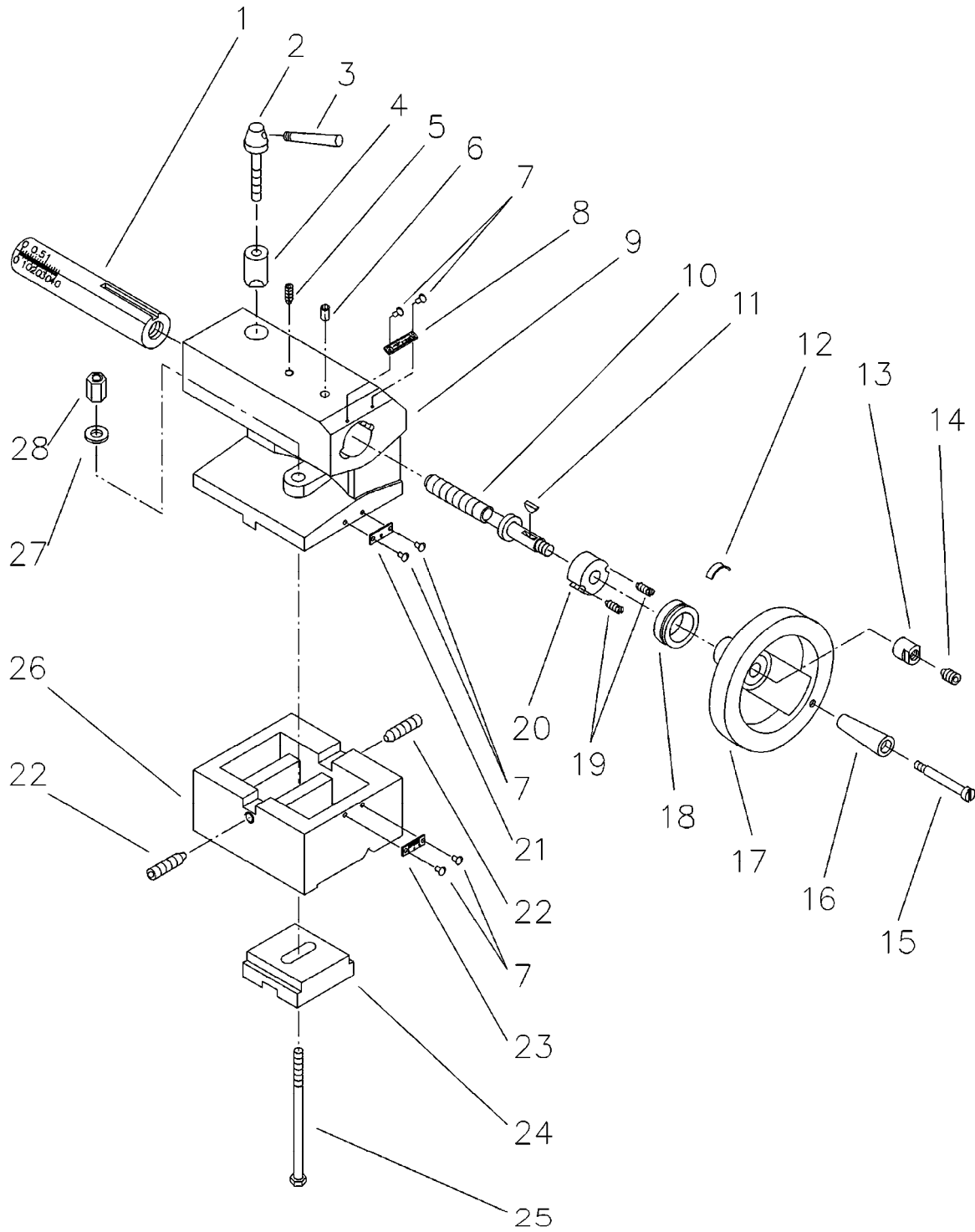
Top Slide Assembly – Parts List

Index No.	Part No.	Description	Size	Qty
.....	BD920N-TSA.....	Top Slide Assembly without Tool Post..... (index nos. 1-32, 36-38, 40, 41)		1
.....	BD920N-TP.....	Four Way Tool Post, Complete (index nos. 35 and 39).....		1
1.....	5011.....	Longitudinal Slide.....		1
2.....	5010.....	Swivel Base.....		1
3.....	5028.....	Gib.....		1
4.....	5008.....	Clamping Plate.....		1
5.....	5009.....	Micrometer Pan.....		1
6.....	5013.....	Lead Screw Nut.....		1
7.....	5014.....	Adjusting Screw.....		1
8.....	5033.....	Screw.....		1
9.....	5007.....	T-Screw.....		2
10.....	5027.....	Pin.....		3
13.....	TS-1502021.....	Socket Head Cap Screw.....	M5x10.....	2
14.....	BD920N-TS14.....	Flat Head Screw.....	M6x10.....	3
15.....	TS-1521041.....	Set Screw.....	M4x10.....	3
16.....	TS-1540021.....	Nut.....	M4.....	3
17.....	TS-1540041.....	Nut.....	M6.....	2
18.....	BD920N-TS18.....	Lock Pin.....	4x12mm.....	1
19.....	BD920N-TS19.....	Lock Pin.....	3x14mm.....	1
23.....	5012.....	Lead Screw.....		1
24.....	5043.....	Lead Screw Mount.....		1
25.....	5004.....	Micrometer Collar.....		1
26.....	5031.....	Handwheel.....		1
27.....	5015.....	Handle.....		2
28.....	BD920N-TS28.....	Key.....	3x13mm.....	1
29.....	5023.....	Feed Spring.....		1
30.....	5022.....	Nut.....		1
31.....	BD920N-TS31.....	Set Screw.....	M8x6.....	1
32.....	BD920N-TS32.....	Lock Pin.....	3x12mm.....	1
35.....	BD920N-TS35.....	Bolt.....	M8x30.....	8
36.....	BD920N-H.S.....	Handle Seat.....		1
37.....	BD920N-H.....	Handle.....		1
38.....	BD920N-TS38.....	Washer.....		1
39.....	BD920N-TS39.....	4-Way Tool Post.....		1
40.....	BD920N-TS40.....	Pin.....		1
41.....	BD920N-TS41.....	Spring.....		1

Single Tool Post Assembly:

.....	BD920N-STP.....	Single Tool Post Assembly (contains all items below).....		1
11.....	5032.....	Nut.....		1
12.....	TS-1490051.....	Hex Cap Screw.....	M8x30.....	1
20.....	5030.....	Tool Clamp.....		1
21.....	BD920N-TS21.....	Washer.....	M8.....	1
22.....	5034.....	Spring.....		1
33.....	5029.....	Plate.....		1
34.....	5035.....	Pin.....	8x20mm.....	1

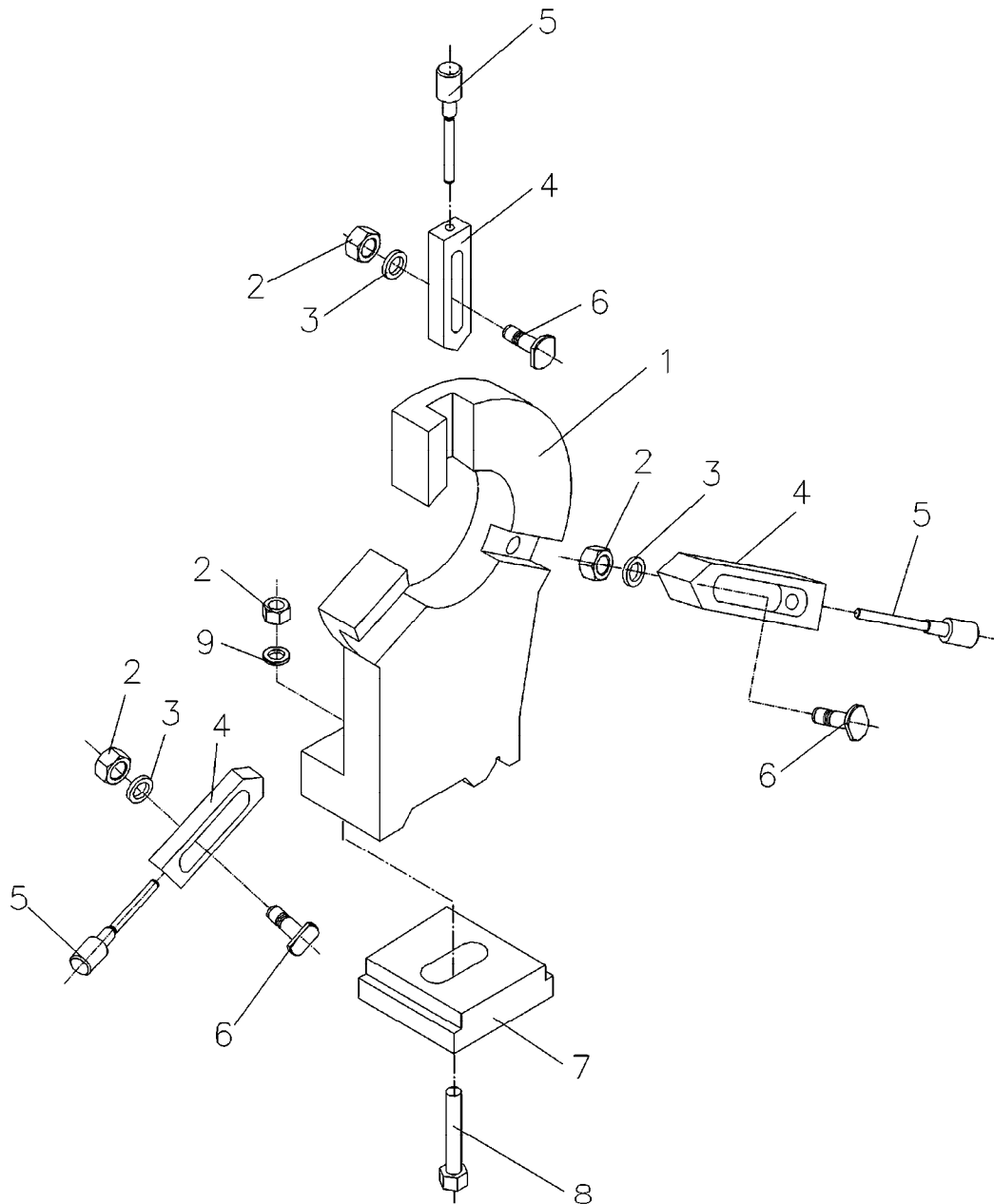
Tailstock Assembly – Exploded View



Tailstock Assembly – Parts List

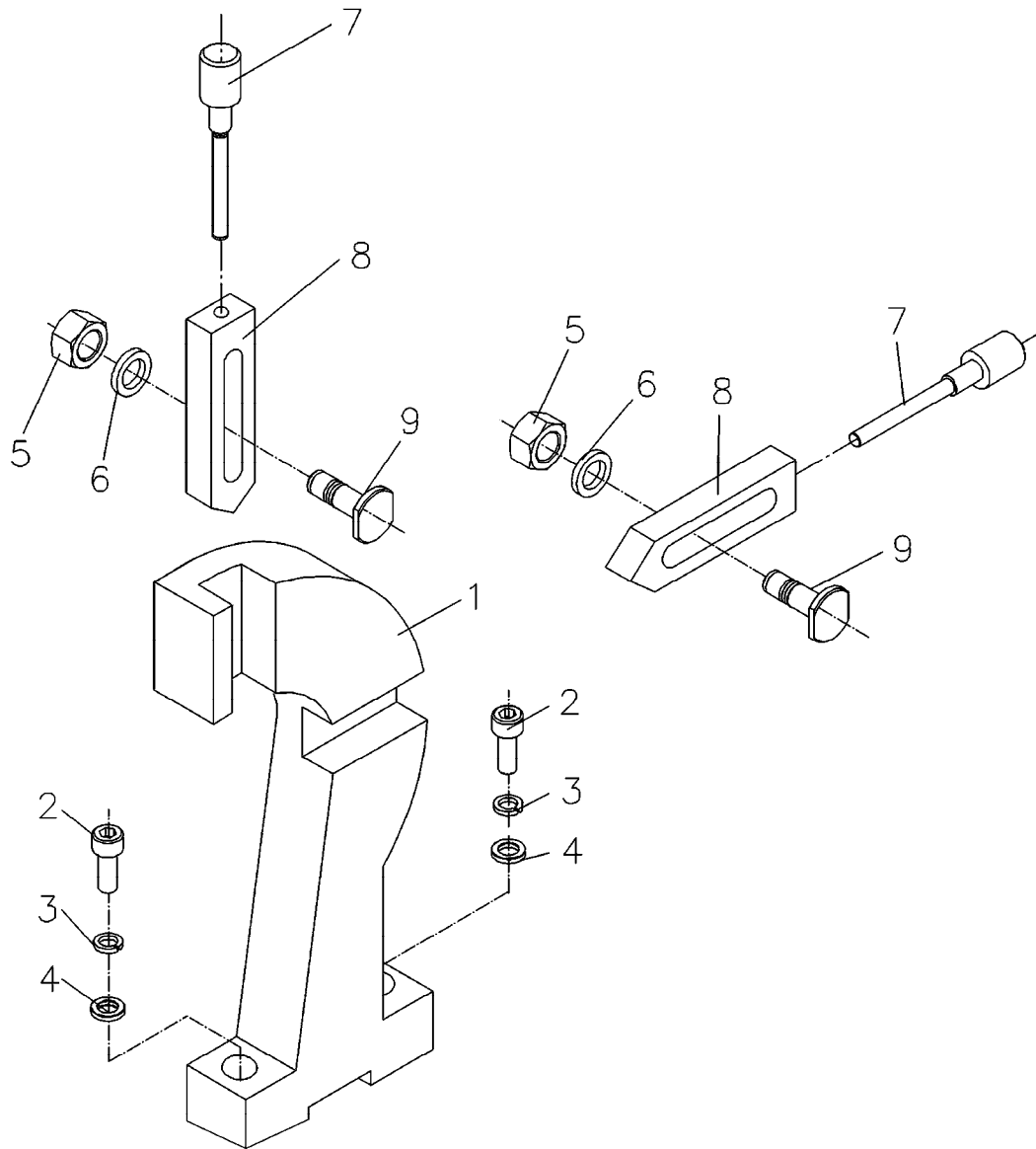
Index No.	Part No.	Description	Size	Qty
1	8009	Tailstock Ram		1
2	8008	Lever		1
3	BD920N-H	Handle		1
4	8001	Clamp		1
5	BD920N-T08	Guide Pin	M5x10	1
6	BD920N-T20	Oil Port	6mm	1
7	BD920N-T19	Rivet	1.5x3mm	6
8	8012	Off Set Indicator Plate		1
9	8005	Tailstock Body		1
10	8010	Leadscrew		1
11	BD920N-T17	Key	3x10mm	1
12	5023	Feed Spring		1
13	BD920N-8014	Nut		1
14	TS-1524011	Set Screw	M8x8	1
15	BD920N-4002	Screw		1
16	4001	Handle		1
17	8013	Handwheel		1
18	8016	Micrometer Collar		1
19	BD920N-T27	Screw	M5x6	2
20	8011	Bushing		1
21	BD920N-T26	Label		1
22	TS-1524061	Set Screw	M8x25	2
23	BD920N-T25	Label		1
24	8015	Clamping Plate		1
25	8007	Screw	M8x100	1
26	8002	Tailstock Base		1
27	TS-1550061	Washer	M8	1
28	8006	Nut	M8	1

Steady Rest Assembly – Exploded View & Parts List



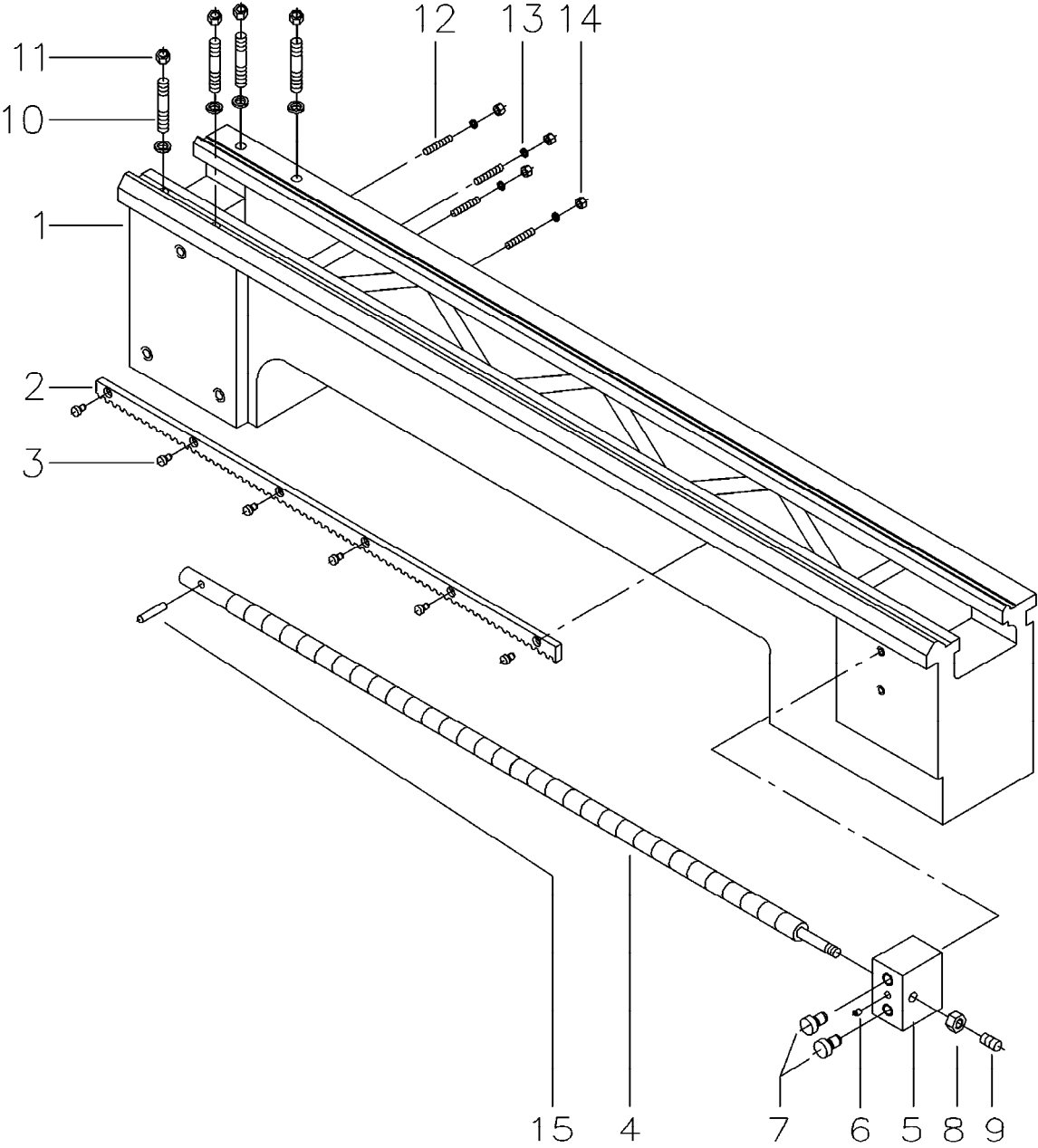
Index No.	Part No.	Description	Size	Qty
.....	BD920N-SR	Steady Rest Complete (index nos. 1-9)		1
1.....	F1001	Rest Casting		1
2.....	TS-1540061	Nut	M8	4
3.....	TS-1550061	Washer	8mm	4
4.....	F1002	Jaw		3
5.....	F1004	Adjusting Screw		3
6.....	F1003	Screw		3
7.....	F1005	Clamping Plate		1
8.....	TS-1490091	Hex Cap Screw	M8x50	1
9.....	TS-1550061	Washer	8mm	1

Travel Rest Assembly – Exploded View & Parts List



Index No.	Part No.	Description	Size	Qty
.....	BD920N-FR.....	Follow Rest Assembly (index nos. 1-9).....		1
1.....	F2001	Rest Casting.....		1
2.....	TS-1503061	Socket Head Cap Screw	M6x25.....	2
3.....	TS-1551041	Lock Washer	6mm	2
4.....	TS-1550041	Washer	6mm	2
5.....	TS-1540061	Hex Nut.....	M8.....	2
6.....	TS-1551061	Washer	8mm	2
7.....	F2004	Adjusting Screw.....		2
8.....	F2002	Jaw.....		2
9.....	F2003	Screw		2

Lathe Bed Assembly – Exploded View



Lathe Bed Assembly – Parts List

Index No.	Part No.	Description	Size	Qty
1.....	7001	Bed.....		1
2.....	7002	Rack.....		1
3.....	TS-1501021	Socket Head Cap Screw	M4x8	6
4.....	7003	Leadscrew	16TPI.....	1
5.....	7004	Bracket		1
6.....	BD920N-B06	Oil Port	6mm	1
7.....	TS-1503091	Socket Head Cap Screw	M6x40.....	2
8.....	7006	Nut		1
9.....	BD920N-B09	Set Screw	M8x8	1
10.....	7005	Stud.....	M8x45.....	4
10A.....	TS-1550061	Flat Washer.....	8mm	4
10B.....	TS-1551061	Lock Washer	8mm	4
11.....	TS-1540061	Hex Nut.....	M8.....	4
12.....	TS-1523081	Set Screw	M6x30.....	4
12A.....	TS-1550041	Flat Washer.....	6mm	4
13.....	TS-1551041	Lock Washer	6mm	4
14.....	TS-1540041	Hex Nut.....	M6.....	4
15.....	BD920N-B15	Pin.....	Ø5x25mm	1
16.....	BD920N-B16	Label – Induction Hardened (not shown)		1
17.....	BD920N-B17	Rivet (not shown).....		4

Wiring Diagram

